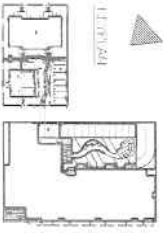
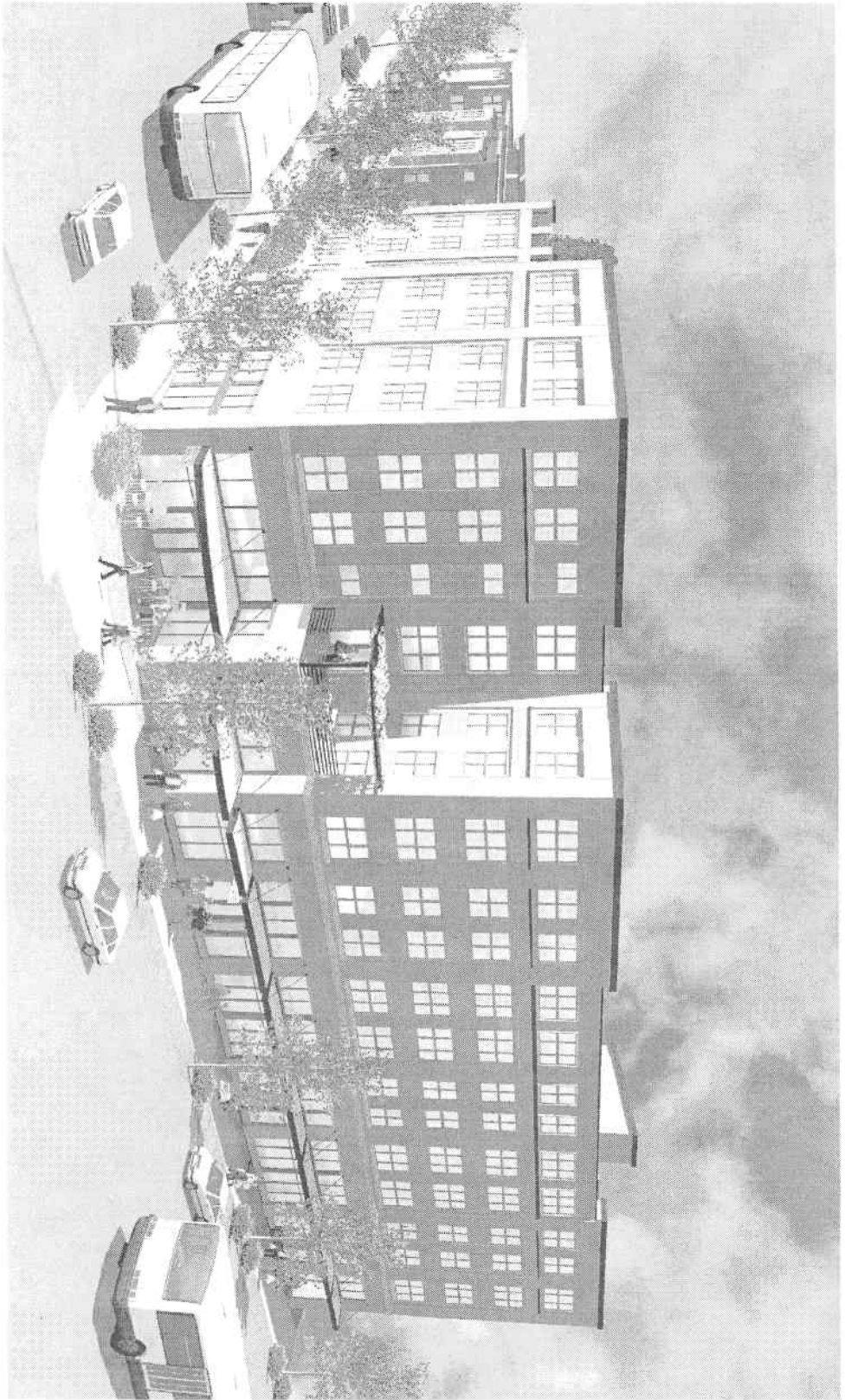


Chubby & Tubby Affordable Workforce Housing
 Seattle, Washington



Schematic Exterior Development Plan (SEED)
 July 28, 2008



Chubby & Tubby Affordable Workforce Housing
 Seattle, Washington

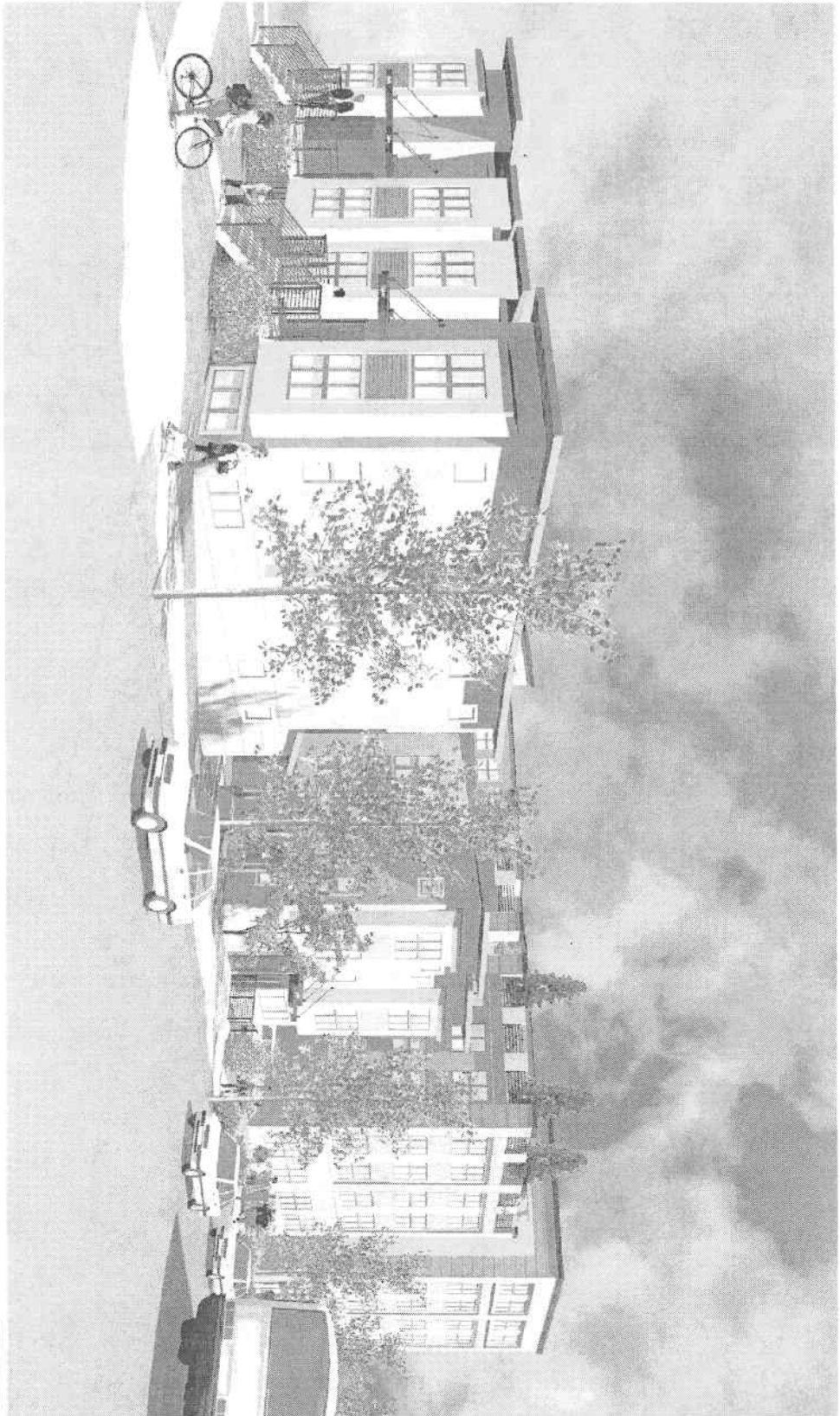


Johnson Brundage
 Architects



Seattle East Project on Duwamish River, 10/15/2011

July 08, 2013

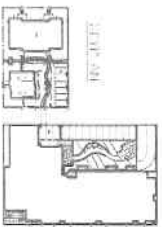


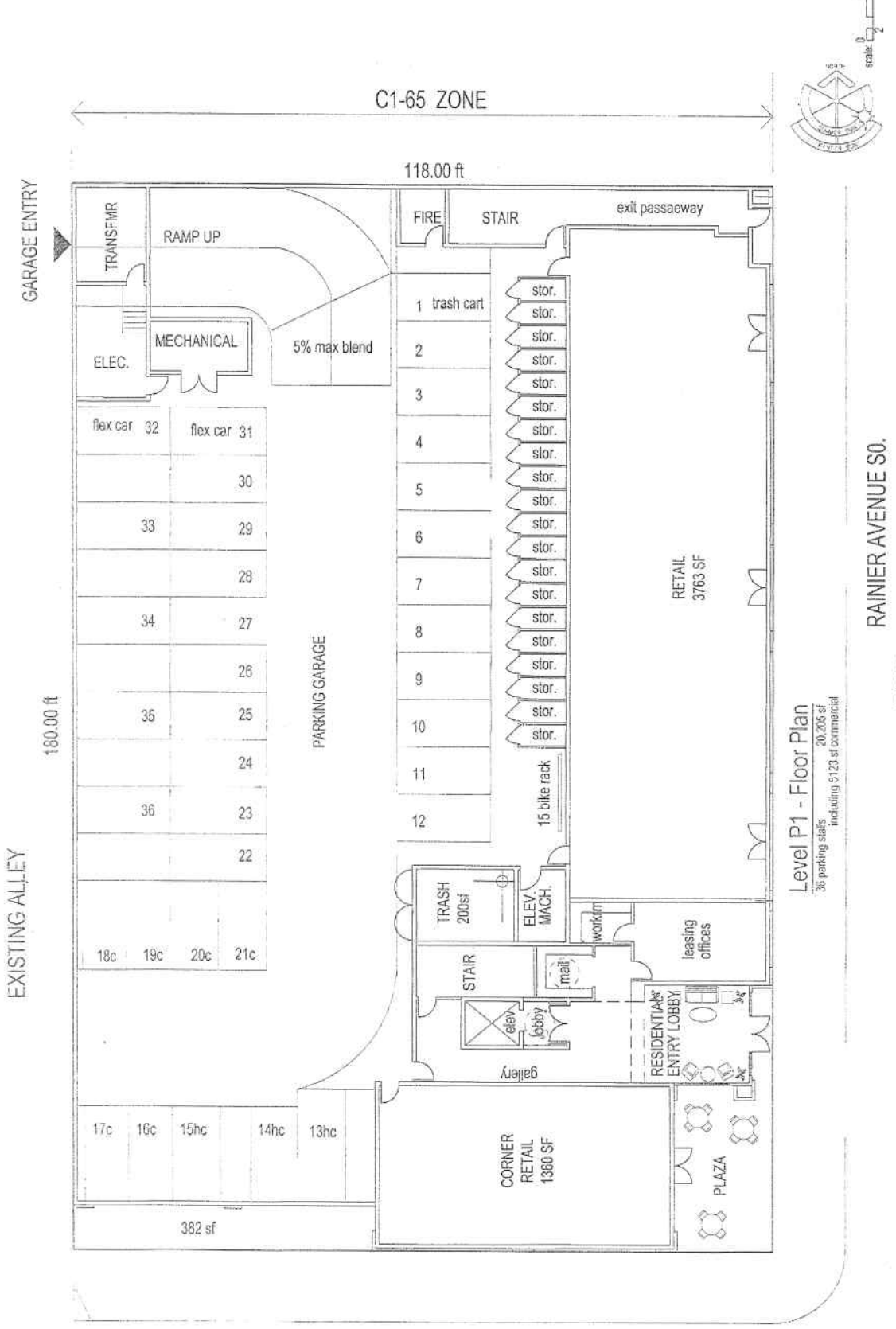
Chubby & Tubby Affordable Workforce Housing
 Seattle, Washington



SouthSide Electric Development, Inc. (SEED)

9/9/09, 2009





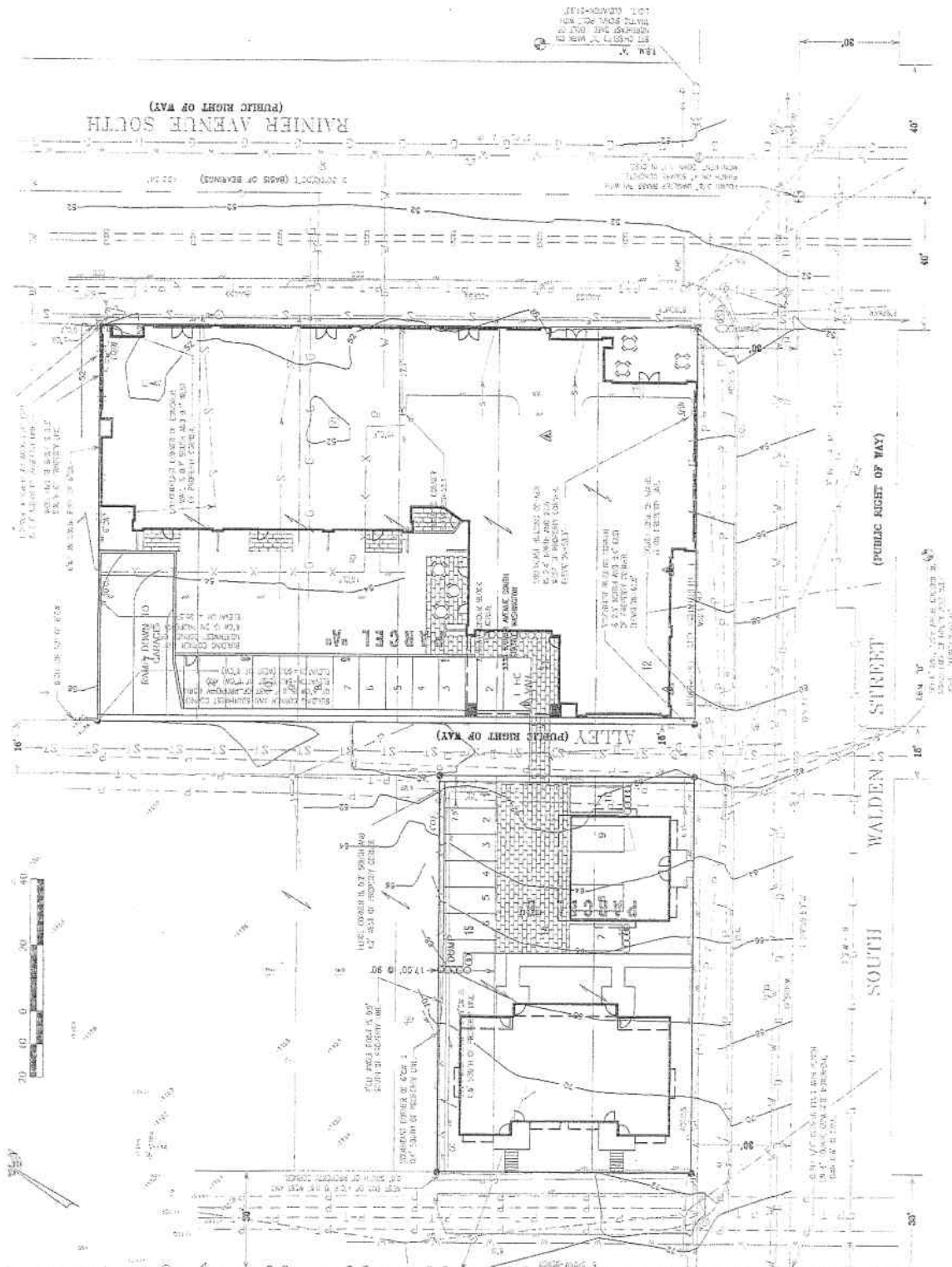
SEED
 April 16, 2008



Chubby & Tubby Workforce Housing - C1-65 Site
 Seattle, Washington

S. WALDEN ST.

CLAREMONT AV
(PUBLIC RIGHT OF WAY)



RAINIER AVENUE SOUTH
(PUBLIC RIGHT OF WAY)

ALLEY
(PUBLIC RIGHT OF WAY)

WALDEN STREET

SOUTH

(PUBLIC RIGHT OF WAY)



Chubby & Tubby Workforce Housing - L3 Site

Seattle, Washington



Johnson Brannell
ARCHITECTS
1000 4th Avenue
Seattle, WA 98101

SEED

April 16, 2008

C1-65
&
L3 site

preliminary site plan - existing survey



NO.	DATE	DESCRIPTION
1	08/14/13	ISSUED FOR PERMIT
2	08/14/13	ISSUED FOR PERMIT
3	08/14/13	ISSUED FOR PERMIT
4	08/14/13	ISSUED FOR PERMIT
5	08/14/13	ISSUED FOR PERMIT

THE CLAREMONT
 CHUBBY & TUBBY WORKFORCE HOUSING - PARCEL A
 3243 PARKWAY EAST, SEATTLE, WA 98107
 12061 252-4-281
 5117 PARKER AVENUE SOUTH SEATTLE, WA 98148
 CONTRACTOR: TERRY DEVELOPMENT, WA 98148
 ARCHITECT: JOHNSON BRAMBLE ARCHITECTS, WA 98148

PROJECT # 07029
 FILE NAME: 07029_FLOOR PLAN
 DRAWN BY: DMC

LEVEL 2
 FLOOR PLAN

SHEET INFO.

- LEVELS 2 THRU 5 CONSTRUCTION TYPE S-A COMPARTMENTS 1-1 & A-1
- DOOR FINISH: 07029-002
- WALL FINISH: 07029-003
- CEILING FINISH: 07029-004
- FLOOR FINISH: 07029-005
- ENCLOSED ROOMS: 07029-006
- W/ P-2: 07029-007
- W/ P-3: 07029-008
- W/ P-4: 07029-009
- W/ P-5: 07029-010
- W/ P-6: 07029-011
- W/ P-7: 07029-012
- W/ P-8: 07029-013
- W/ P-9: 07029-014
- W/ P-10: 07029-015
- W/ P-11: 07029-016
- W/ P-12: 07029-017
- W/ P-13: 07029-018
- W/ P-14: 07029-019
- W/ P-15: 07029-020
- W/ P-16: 07029-021
- W/ P-17: 07029-022
- W/ P-18: 07029-023
- W/ P-19: 07029-024
- W/ P-20: 07029-025
- W/ P-21: 07029-026
- W/ P-22: 07029-027
- W/ P-23: 07029-028
- W/ P-24: 07029-029
- W/ P-25: 07029-030
- W/ P-26: 07029-031
- W/ P-27: 07029-032
- W/ P-28: 07029-033
- W/ P-29: 07029-034
- W/ P-30: 07029-035
- W/ P-31: 07029-036
- W/ P-32: 07029-037
- W/ P-33: 07029-038
- W/ P-34: 07029-039
- W/ P-35: 07029-040
- W/ P-36: 07029-041
- W/ P-37: 07029-042
- W/ P-38: 07029-043
- W/ P-39: 07029-044
- W/ P-40: 07029-045
- W/ P-41: 07029-046
- W/ P-42: 07029-047
- W/ P-43: 07029-048
- W/ P-44: 07029-049
- W/ P-45: 07029-050
- W/ P-46: 07029-051
- W/ P-47: 07029-052
- W/ P-48: 07029-053
- W/ P-49: 07029-054
- W/ P-50: 07029-055
- W/ P-51: 07029-056
- W/ P-52: 07029-057
- W/ P-53: 07029-058
- W/ P-54: 07029-059
- W/ P-55: 07029-060
- W/ P-56: 07029-061
- W/ P-57: 07029-062
- W/ P-58: 07029-063
- W/ P-59: 07029-064
- W/ P-60: 07029-065
- W/ P-61: 07029-066
- W/ P-62: 07029-067
- W/ P-63: 07029-068
- W/ P-64: 07029-069
- W/ P-65: 07029-070
- W/ P-66: 07029-071
- W/ P-67: 07029-072
- W/ P-68: 07029-073
- W/ P-69: 07029-074
- W/ P-70: 07029-075
- W/ P-71: 07029-076
- W/ P-72: 07029-077
- W/ P-73: 07029-078
- W/ P-74: 07029-079
- W/ P-75: 07029-080
- W/ P-76: 07029-081
- W/ P-77: 07029-082
- W/ P-78: 07029-083
- W/ P-79: 07029-084
- W/ P-80: 07029-085
- W/ P-81: 07029-086
- W/ P-82: 07029-087
- W/ P-83: 07029-088
- W/ P-84: 07029-089
- W/ P-85: 07029-090
- W/ P-86: 07029-091
- W/ P-87: 07029-092
- W/ P-88: 07029-093
- W/ P-89: 07029-094
- W/ P-90: 07029-095
- W/ P-91: 07029-096
- W/ P-92: 07029-097
- W/ P-93: 07029-098
- W/ P-94: 07029-099
- W/ P-95: 07029-100
- W/ P-96: 07029-101
- W/ P-97: 07029-102
- W/ P-98: 07029-103
- W/ P-99: 07029-104
- W/ P-100: 07029-105
- W/ P-101: 07029-106
- W/ P-102: 07029-107
- W/ P-103: 07029-108
- W/ P-104: 07029-109
- W/ P-105: 07029-110
- W/ P-106: 07029-111
- W/ P-107: 07029-112
- W/ P-108: 07029-113
- W/ P-109: 07029-114
- W/ P-110: 07029-115
- W/ P-111: 07029-116
- W/ P-112: 07029-117
- W/ P-113: 07029-118
- W/ P-114: 07029-119
- W/ P-115: 07029-120
- W/ P-116: 07029-121
- W/ P-117: 07029-122
- W/ P-118: 07029-123
- W/ P-119: 07029-124
- W/ P-120: 07029-125
- W/ P-121: 07029-126
- W/ P-122: 07029-127
- W/ P-123: 07029-128
- W/ P-124: 07029-129
- W/ P-125: 07029-130
- W/ P-126: 07029-131
- W/ P-127: 07029-132
- W/ P-128: 07029-133
- W/ P-129: 07029-134
- W/ P-130: 07029-135
- W/ P-131: 07029-136
- W/ P-132: 07029-137
- W/ P-133: 07029-138
- W/ P-134: 07029-139
- W/ P-135: 07029-140
- W/ P-136: 07029-141
- W/ P-137: 07029-142
- W/ P-138: 07029-143
- W/ P-139: 07029-144
- W/ P-140: 07029-145
- W/ P-141: 07029-146
- W/ P-142: 07029-147
- W/ P-143: 07029-148
- W/ P-144: 07029-149
- W/ P-145: 07029-150
- W/ P-146: 07029-151
- W/ P-147: 07029-152
- W/ P-148: 07029-153
- W/ P-149: 07029-154
- W/ P-150: 07029-155
- W/ P-151: 07029-156
- W/ P-152: 07029-157
- W/ P-153: 07029-158
- W/ P-154: 07029-159
- W/ P-155: 07029-160
- W/ P-156: 07029-161
- W/ P-157: 07029-162
- W/ P-158: 07029-163
- W/ P-159: 07029-164
- W/ P-160: 07029-165
- W/ P-161: 07029-166
- W/ P-162: 07029-167
- W/ P-163: 07029-168
- W/ P-164: 07029-169
- W/ P-165: 07029-170
- W/ P-166: 07029-171
- W/ P-167: 07029-172
- W/ P-168: 07029-173
- W/ P-169: 07029-174
- W/ P-170: 07029-175
- W/ P-171: 07029-176
- W/ P-172: 07029-177
- W/ P-173: 07029-178
- W/ P-174: 07029-179
- W/ P-175: 07029-180
- W/ P-176: 07029-181
- W/ P-177: 07029-182
- W/ P-178: 07029-183
- W/ P-179: 07029-184
- W/ P-180: 07029-185
- W/ P-181: 07029-186
- W/ P-182: 07029-187
- W/ P-183: 07029-188
- W/ P-184: 07029-189
- W/ P-185: 07029-190
- W/ P-186: 07029-191
- W/ P-187: 07029-192
- W/ P-188: 07029-193
- W/ P-189: 07029-194
- W/ P-190: 07029-195
- W/ P-191: 07029-196
- W/ P-192: 07029-197
- W/ P-193: 07029-198
- W/ P-194: 07029-199
- W/ P-195: 07029-200
- W/ P-196: 07029-201
- W/ P-197: 07029-202
- W/ P-198: 07029-203
- W/ P-199: 07029-204
- W/ P-200: 07029-205
- W/ P-201: 07029-206
- W/ P-202: 07029-207
- W/ P-203: 07029-208
- W/ P-204: 07029-209
- W/ P-205: 07029-210
- W/ P-206: 07029-211
- W/ P-207: 07029-212
- W/ P-208: 07029-213
- W/ P-209: 07029-214
- W/ P-210: 07029-215
- W/ P-211: 07029-216
- W/ P-212: 07029-217
- W/ P-213: 07029-218
- W/ P-214: 07029-219
- W/ P-215: 07029-220
- W/ P-216: 07029-221
- W/ P-217: 07029-222
- W/ P-218: 07029-223
- W/ P-219: 07029-224
- W/ P-220: 07029-225
- W/ P-221: 07029-226
- W/ P-222: 07029-227
- W/ P-223: 07029-228
- W/ P-224: 07029-229
- W/ P-225: 07029-230
- W/ P-226: 07029-231
- W/ P-227: 07029-232
- W/ P-228: 07029-233
- W/ P-229: 07029-234
- W/ P-230: 07029-235
- W/ P-231: 07029-236
- W/ P-232: 07029-237
- W/ P-233: 07029-238
- W/ P-234: 07029-239
- W/ P-235: 07029-240
- W/ P-236: 07029-241
- W/ P-237: 07029-242
- W/ P-238: 07029-243
- W/ P-239: 07029-244
- W/ P-240: 07029-245
- W/ P-241: 07029-246
- W/ P-242: 07029-247
- W/ P-243: 07029-248
- W/ P-244: 07029-249
- W/ P-245: 07029-250
- W/ P-246: 07029-251
- W/ P-247: 07029-252
- W/ P-248: 07029-253
- W/ P-249: 07029-254
- W/ P-250: 07029-255
- W/ P-251: 07029-256
- W/ P-252: 07029-257
- W/ P-253: 07029-258
- W/ P-254: 07029-259
- W/ P-255: 07029-260
- W/ P-256: 07029-261
- W/ P-257: 07029-262
- W/ P-258: 07029-263
- W/ P-259: 07029-264
- W/ P-260: 07029-265
- W/ P-261: 07029-266
- W/ P-262: 07029-267
- W/ P-263: 07029-268
- W/ P-264: 07029-269
- W/ P-265: 07029-270
- W/ P-266: 07029-271
- W/ P-267: 07029-272
- W/ P-268: 07029-273
- W/ P-269: 07029-274
- W/ P-270: 07029-275
- W/ P-271: 07029-276
- W/ P-272: 07029-277
- W/ P-273: 07029-278
- W/ P-274: 07029-279
- W/ P-275: 07029-280
- W/ P-276: 07029-281
- W/ P-277: 07029-282
- W/ P-278: 07029-283
- W/ P-279: 07029-284
- W/ P-280: 07029-285
- W/ P-281: 07029-286
- W/ P-282: 07029-287
- W/ P-283: 07029-288
- W/ P-284: 07029-289
- W/ P-285: 07029-290
- W/ P-286: 07029-291
- W/ P-287: 07029-292
- W/ P-288: 07029-293
- W/ P-289: 07029-294
- W/ P-290: 07029-295
- W/ P-291: 07029-296
- W/ P-292: 07029-297
- W/ P-293: 07029-298
- W/ P-294: 07029-299
- W/ P-295: 07029-300
- W/ P-296: 07029-301
- W/ P-297: 07029-302
- W/ P-298: 07029-303
- W/ P-299: 07029-304
- W/ P-300: 07029-305
- W/ P-301: 07029-306
- W/ P-302: 07029-307
- W/ P-303: 07029-308
- W/ P-304: 07029-309
- W/ P-305: 07029-310
- W/ P-306: 07029-311
- W/ P-307: 07029-312
- W/ P-308: 07029-313
- W/ P-309: 07029-314
- W/ P-310: 07029-315
- W/ P-311: 07029-316
- W/ P-312: 07029-317
- W/ P-313: 07029-318
- W/ P-314: 07029-319
- W/ P-315: 07029-320
- W/ P-316: 07029-321
- W/ P-317: 07029-322
- W/ P-318: 07029-323
- W/ P-319: 07029-324
- W/ P-320: 07029-325
- W/ P-321: 07029-326
- W/ P-322: 07029-327
- W/ P-323: 07029-328
- W/ P-324: 07029-329
- W/ P-325: 07029-330
- W/ P-326: 07029-331
- W/ P-327: 07029-332
- W/ P-328: 07029-333
- W/ P-329: 07029-334
- W/ P-330: 07029-335
- W/ P-331: 07029-336
- W/ P-332: 07029-337
- W/ P-333: 07029-338
- W/ P-334: 07029-339
- W/ P-335: 07029-340
- W/ P-336: 07029-341
- W/ P-337: 07029-342
- W/ P-338: 07029-343
- W/ P-339: 07029-344
- W/ P-340: 07029-345
- W/ P-341: 07029-346
- W/ P-342: 07029-347
- W/ P-343: 07029-348
- W/ P-344: 07029-349
- W/ P-345: 07029-350
- W/ P-346: 07029-351
- W/ P-347: 07029-352
- W/ P-348: 07029-353
- W/ P-349: 07029-354
- W/ P-350: 07029-355
- W/ P-351: 07029-356
- W/ P-352: 07029-357
- W/ P-353: 07029-358
- W/ P-354: 07029-359
- W/ P-355: 07029-360
- W/ P-356: 07029-361
- W/ P-357: 07029-362
- W/ P-358: 07029-363
- W/ P-359: 07029-364
- W/ P-360: 07029-365
- W/ P-361: 07029-366
- W/ P-362: 07029-367
- W/ P-363: 07029-368
- W/ P-364: 07029-369
- W/ P-365: 07029-370
- W/ P-366: 07029-371
- W/ P-367: 07029-372
- W/ P-368: 07029-373
- W/ P-369: 07029-374
- W/ P-370: 07029-375
- W/ P-371: 07029-376
- W/ P-372: 07029-377
- W/ P-373: 07029-378
- W/ P-374: 07029-379
- W/ P-375: 07029-380
- W/ P-376: 07029-381
- W/ P-377: 07029-382
- W/ P-378: 07029-383
- W/ P-379: 07029-384
- W/ P-380: 07029-385
- W/ P-381: 07029-386
- W/ P-382: 07029-387
- W/ P-383: 07029-388
- W/ P-384: 07029-389
- W/ P-385: 07029-390
- W/ P-386: 07029-391
- W/ P-387: 07029-392
- W/ P-388: 07029-393
- W/ P-389: 07029-394
- W/ P-390: 07029-395
- W/ P-391: 07029-396
- W/ P-392: 07029-397
- W/ P-393: 07029-398
- W/ P-394: 07029-399
- W/ P-395: 07029-400
- W/ P-396: 07029-401
- W/ P-397: 07029-402
- W/ P-398: 07029-403
- W/ P-399: 07029-404
- W/ P-400: 07029-405
- W/ P-401: 07029-406
- W/ P-402: 07029-407
- W/ P-403: 07029-408
- W/ P-404: 07029-409
- W/ P-405: 07029-410
- W/ P-406: 07029-411
- W/ P-407: 07029-412
- W/ P-408: 07029-413
- W/ P-409: 07029-414
- W/ P-410: 07029-415
- W/ P-411: 07029-416
- W/ P-412: 07029-417
- W/ P-413: 07029-418
- W/ P-414: 07029-419
- W/ P-415: 07029-420
- W/ P-416: 07029-421
- W/ P-417: 07029-422
- W/ P-418: 07029-423
- W/ P-419: 07029-424
- W/ P-420: 07029-425
- W/ P-421: 07029-426
- W/ P-422: 07029-427
- W/ P-423: 07029-428
- W/ P-424: 07029-429
- W/ P-425: 07029-430
- W/ P-426: 07029-431
- W/ P-427: 07029-432
- W/ P-428: 07029-433
- W/ P-429: 07029-434
- W/ P-430: 07029-435
- W/ P-431: 07029-436
- W/ P-432: 07029-437
- W/ P-433: 07029-438
- W/ P-434: 07029-439
- W/ P-435: 07029-440
- W/ P-436: 07029-441
- W/ P-437: 07029-442
- W/ P-438: 07029-443
- W/ P-439: 07029-444
- W/ P-440: 07029-445
- W/ P-441: 07029-446
- W/ P-442: 07029-447
- W/ P-443: 07029-448
- W/ P-444: 07029-449
- W/ P-445: 07029-450
- W/ P-446: 07029-451
- W/ P-447: 07029-452
- W/ P-448: 07029-453
- W/ P-449: 07029-454
- W/ P-450: 07029-455
- W/ P-451: 07029-456
- W/ P-452: 07029-457
- W/ P-453: 07029-458
- W/ P-454: 07029-459
- W/ P-455: 07029-460
- W/ P-456: 07029-461
- W/ P-457: 07029-462
- W/ P-458: 07029-463
- W/ P-459: 07029-464
- W/ P-460: 07029-465
- W/ P-461: 07029-466
- W/ P-462: 07029-467
- W/ P-463: 07029-468
- W/ P-464: 07029-469
- W/ P-465: 07029-470
- W/ P-466: 07029-471
- W/ P-467: 07029-472
- W/ P-468: 07029-473
- W/ P-469: 07029-474
- W/ P-470: 07029-475
- W/ P-471: 07029-476
- W/ P-472: 07029-477
- W/ P-473: 07029-478
- W/ P-474: 07029-479
- W/ P-475: 07029-480
- W/ P-476: 07029-481
- W/ P-477: 07029-482



Johnson Brandt
 ARCHITECTURE
 1000 15th Avenue South
 Suite 1000
 Seattle, WA 98144
 Phone: 206.461.8300
 Fax: 206.461.8301
 www.jbaj.com

Bling L. Alving, AIA
 Nicholas R. Eganer, AIA



ISSUE DATES	DESCRIPTION
10/20/10	ISSUE FOR PERMITS
11/10/10	ISSUE FOR CONSTRUCTION
01/20/11	ISSUE FOR CONSTRUCTION

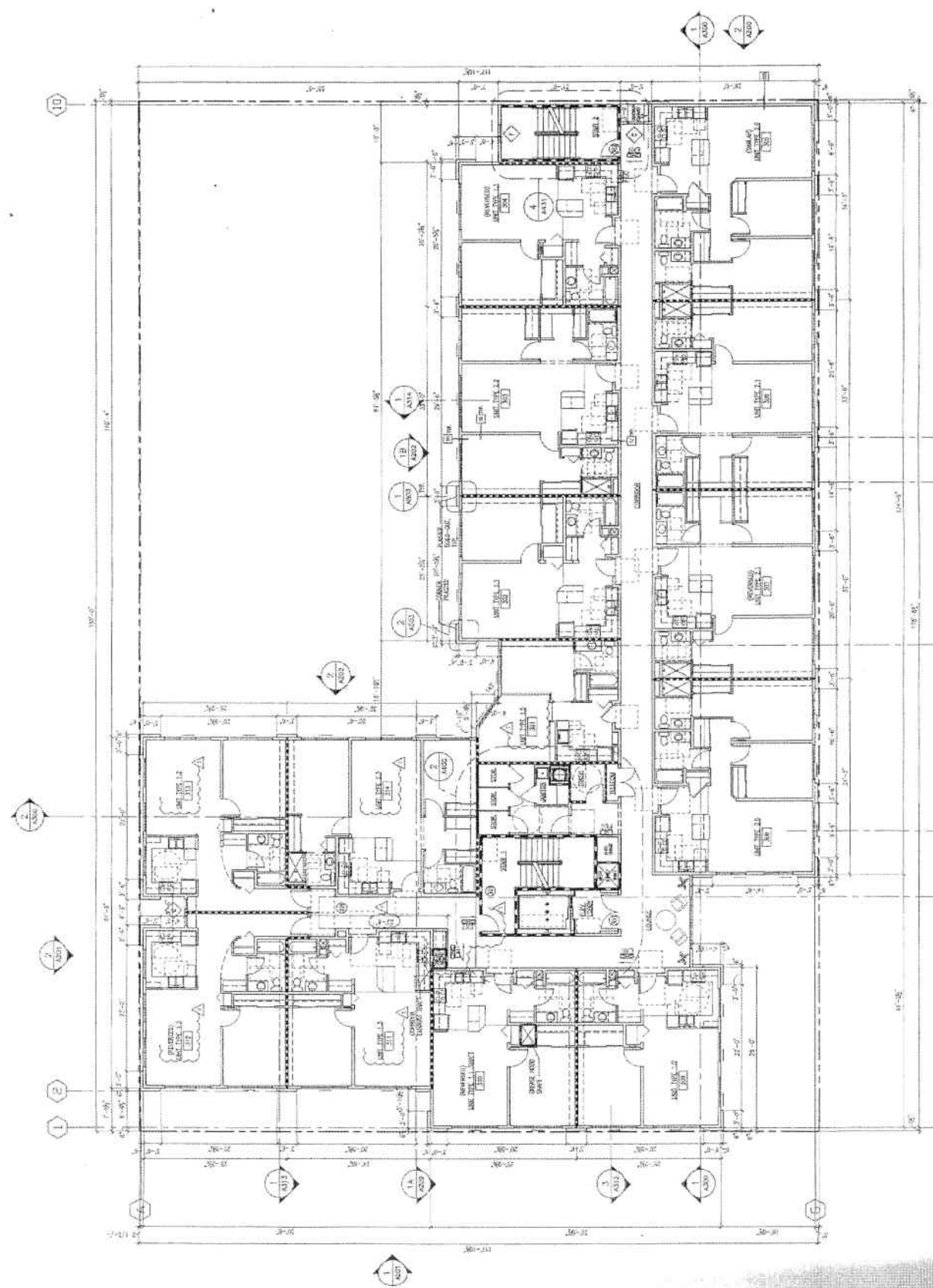
THE CLAREMONT
 CHUBBY & TUBBY WORKFORCE HOUSING - PARCEL A
 SITE ADDRESS: PARCEL A 3833 FAHNER AVE SOUTH SEATTLE, WA 98148
 DEVELOPER: CHUBBY & TUBBY WORKFORCE HOUSING DEVELOPMENT, P.C.
 ARCHITECT: JOHNSON BRANDT ARCHITECTURE
 PROJECT # 07029
 DATE: 01/20/11

PROJECT # 07029
 DATE: 01/20/11
 DRAWN BY: DMS

LEVEL 3
 FLOOR PLAN

SHEET INFO.

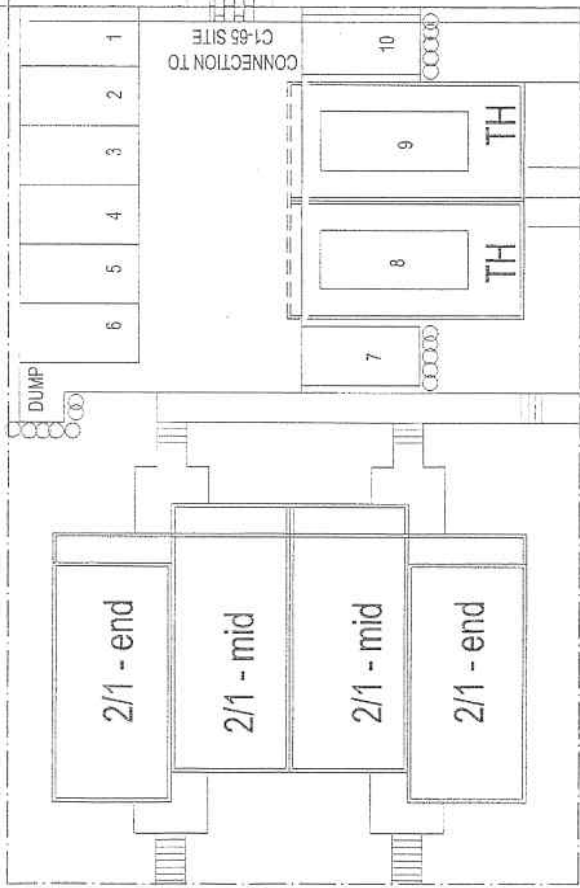
1. LEVEL 3 SHALL BE CONSTRUCTION TYPE 5-A OCCUPANCIES 8-2 & A-3 PER CODE.
2. SEE ARCHITECTURE SHEET 300 FOR FINISHES.
3. SEE ARCHITECTURE SHEET 300 FOR FINISHES.
4. SEE ARCHITECTURE SHEET 300 FOR FINISHES.
5. SEE ARCHITECTURE SHEET 300 FOR FINISHES.
6. SEE ARCHITECTURE SHEET 300 FOR FINISHES.
7. SEE ARCHITECTURE SHEET 300 FOR FINISHES.
8. SEE ARCHITECTURE SHEET 300 FOR FINISHES.
9. SEE ARCHITECTURE SHEET 300 FOR FINISHES.
10. SEE ARCHITECTURE SHEET 300 FOR FINISHES.
11. SEE ARCHITECTURE SHEET 300 FOR FINISHES.
12. SEE ARCHITECTURE SHEET 300 FOR FINISHES.
13. SEE ARCHITECTURE SHEET 300 FOR FINISHES.
14. SEE ARCHITECTURE SHEET 300 FOR FINISHES.
15. SEE ARCHITECTURE SHEET 300 FOR FINISHES.
16. SEE ARCHITECTURE SHEET 300 FOR FINISHES.
17. SEE ARCHITECTURE SHEET 300 FOR FINISHES.
18. SEE ARCHITECTURE SHEET 300 FOR FINISHES.
19. SEE ARCHITECTURE SHEET 300 FOR FINISHES.



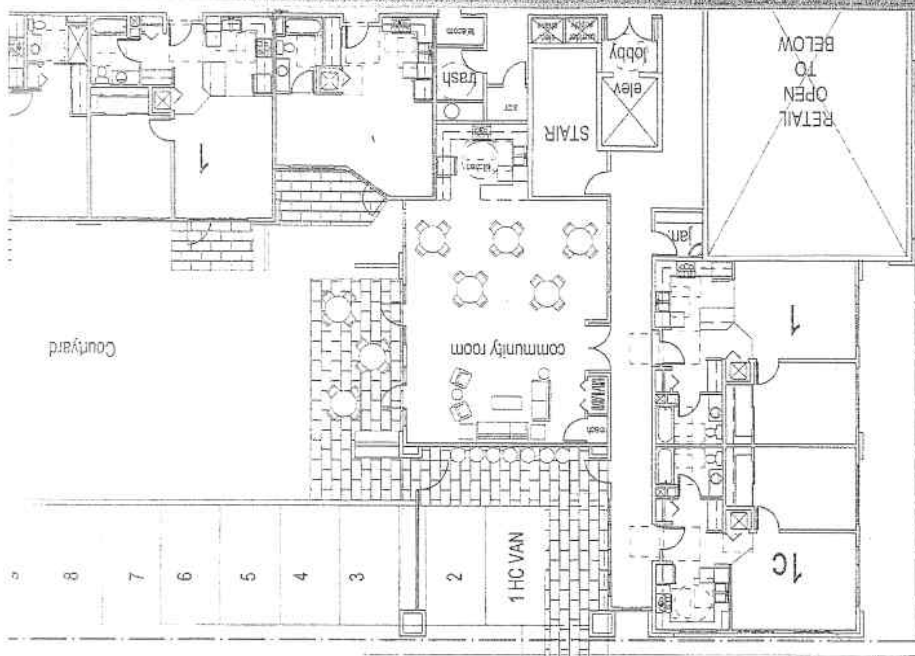
CLAREMONT AVENUE SO

77.00 ft

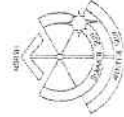
L3 ZONE



SO WALDEN STREET



Site Plan
L3 site: 10 units total



Scale: 0 2 4 8 16



Chubby & Tubby Workforce Housing - L3 Site

Seattle, Washington

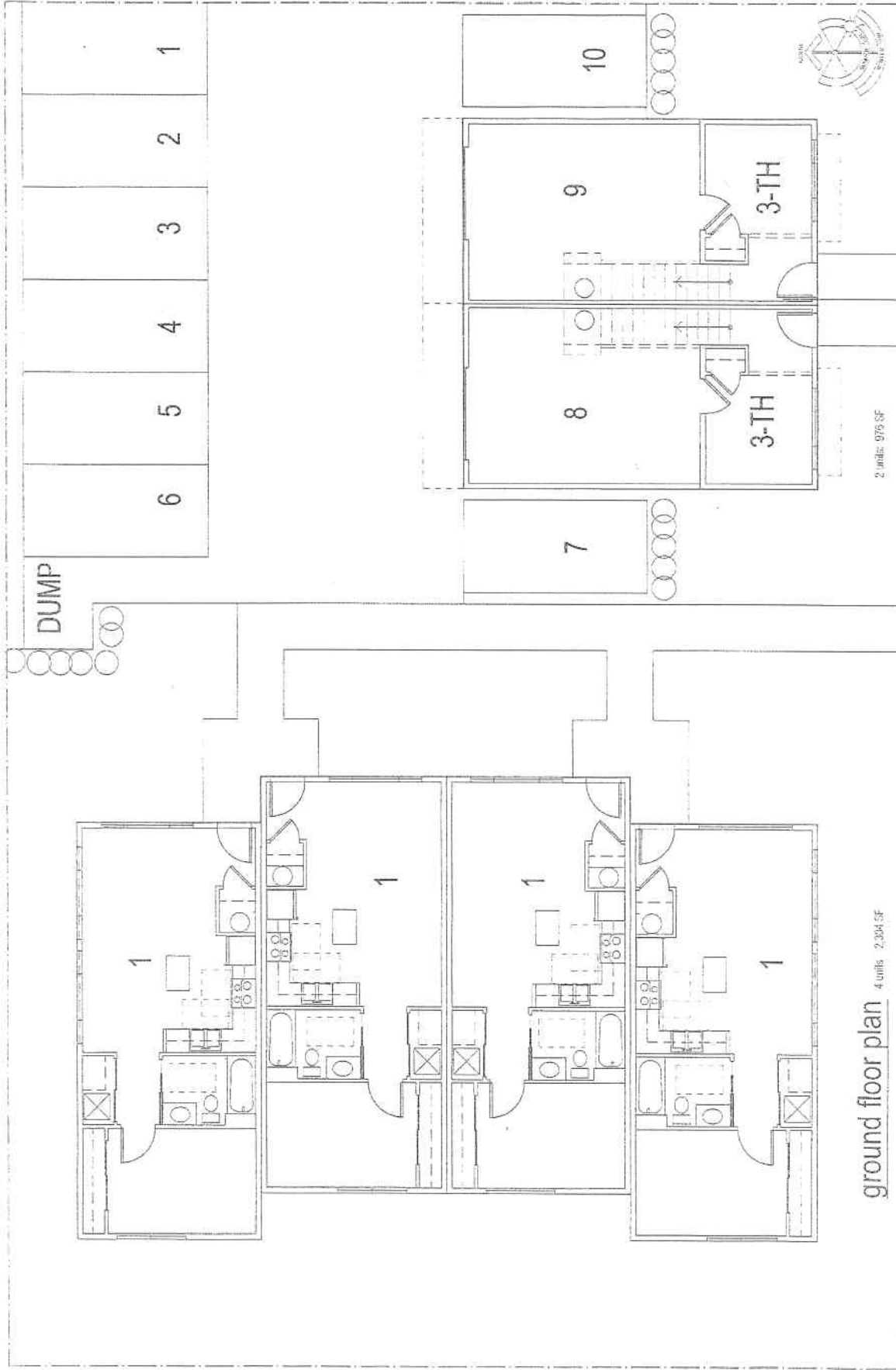
SEED

April 16, 2008

preliminary site plan - L3 site



L3 site



ground floor plan 4 units 2,304 SF

2 units 976 SF



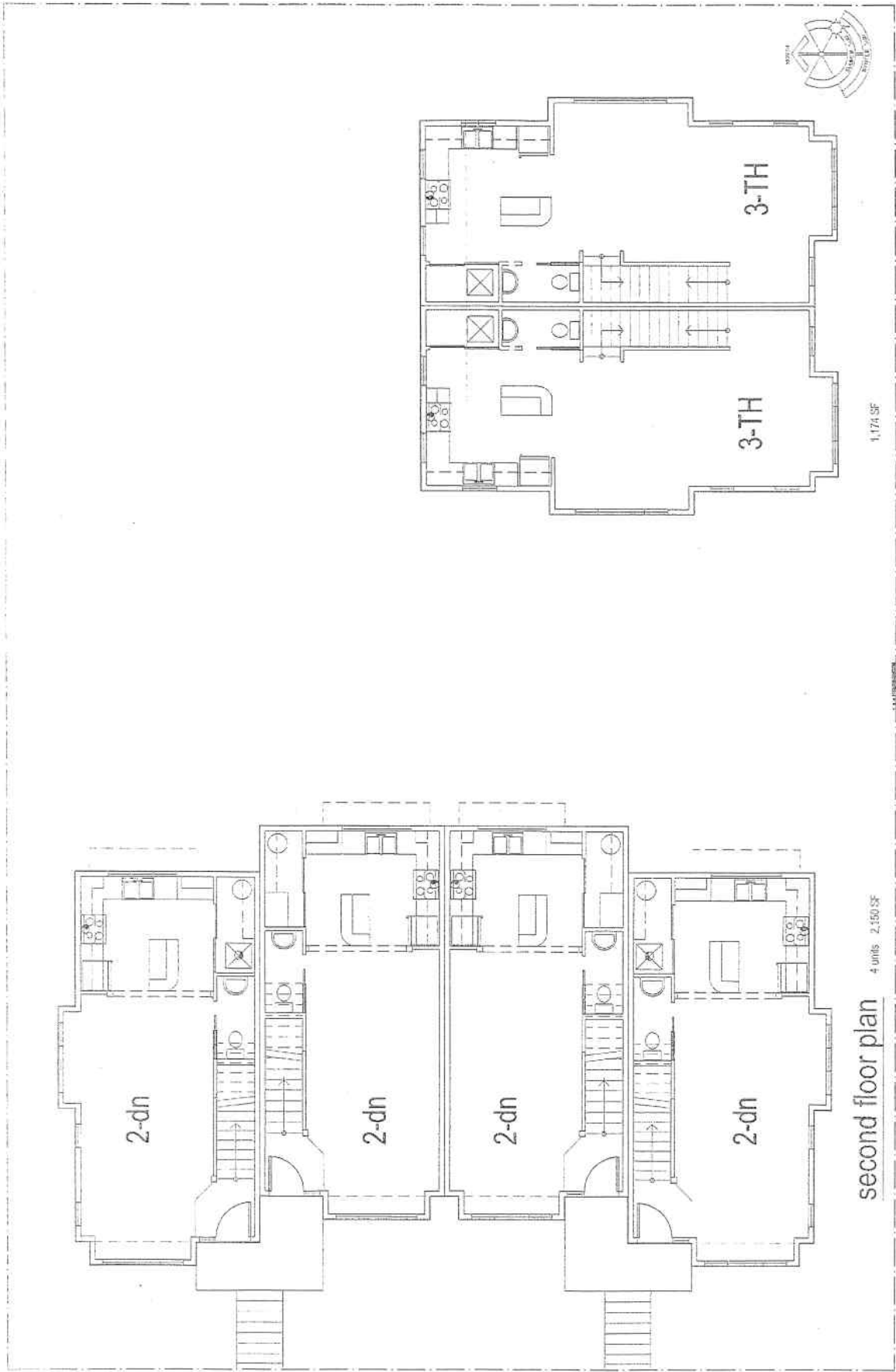
Johnson Brand
Architectural Firm, Inc.
Seattle, WA 98101

scale 1/8" = 1'-0"

SEED

April 16, 2008

Chubby & Tubby Workforce Housing - I-3 Site
Seattle, Washington

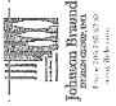


second floor plan 4 units 2,150 SF

1,174 SF

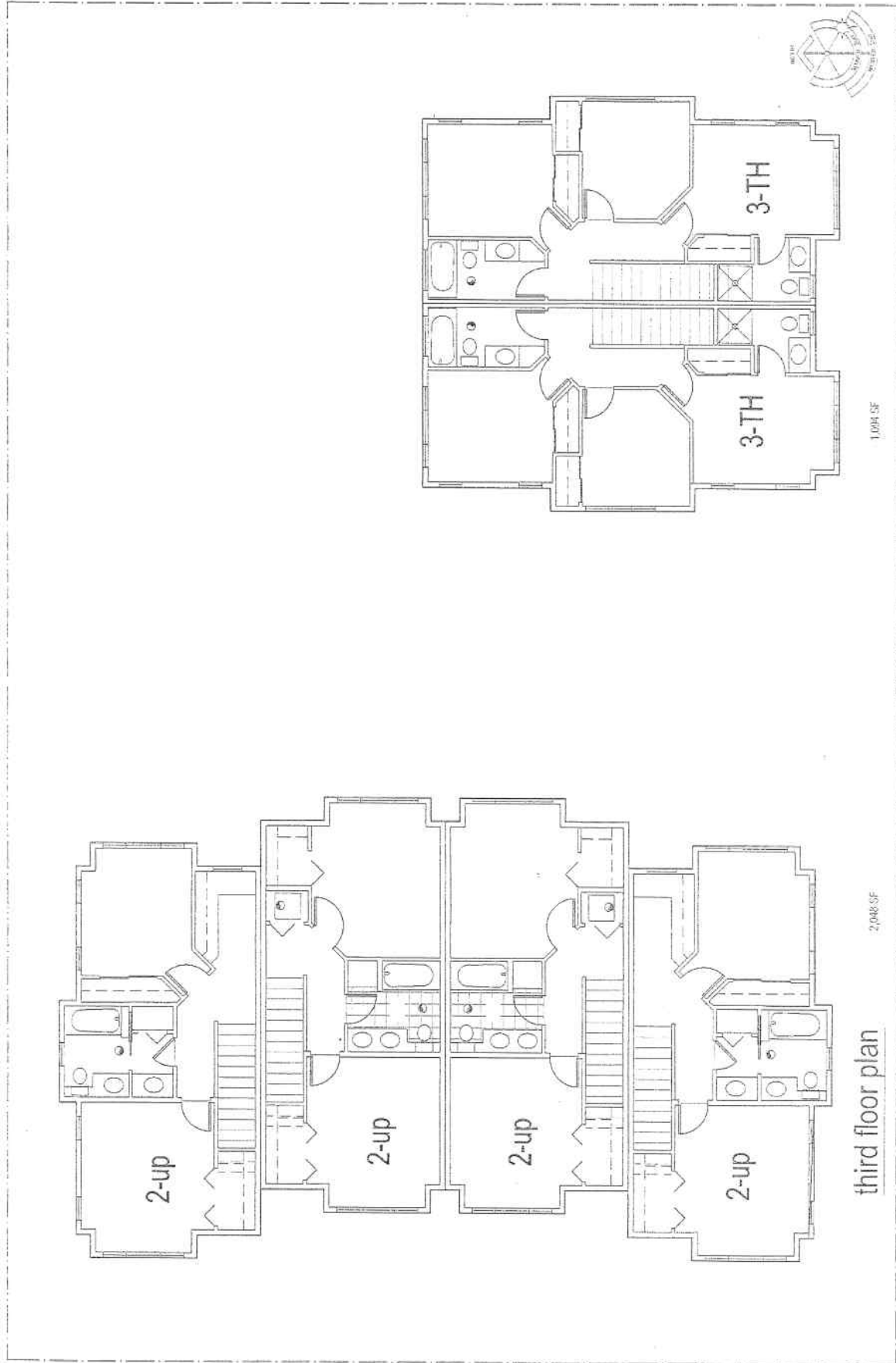
SEED

April 16, 2008



Chubby & Tubby Workforce Housing - L3 Site

Seattle, Washington



third floor plan

2,048 SF

1,098 SF

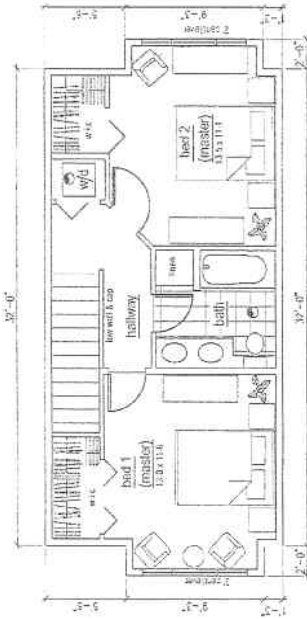
Chubby & Tubby Workforce Housing - L3 Site

Seattle, Washington



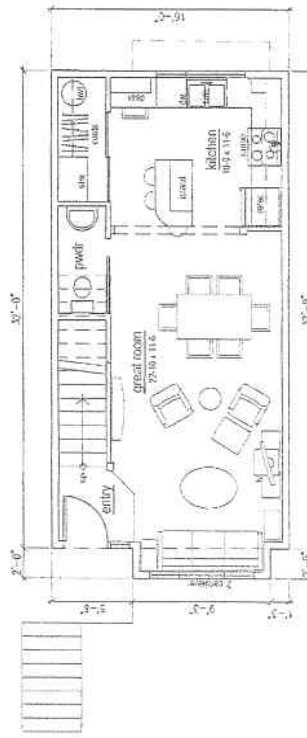
scale: 1/8" = 1' SEED

April 16, 2008



level 2 floor plan

- double master bedrooms
- large bath w/ linen
- laundry upstairs

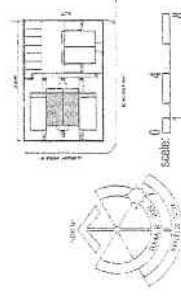


level 1 floor plan

- island kitchen
- large windows front & rear
- coat alcove (laundry upstairs)

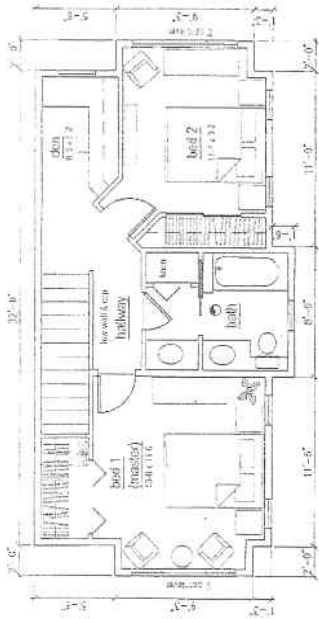
"great room" concept - 2 bedroom middle units

total: 2
 unit area: upstairs 590 sf
 downstairs 531 sf
 total 1037 sf



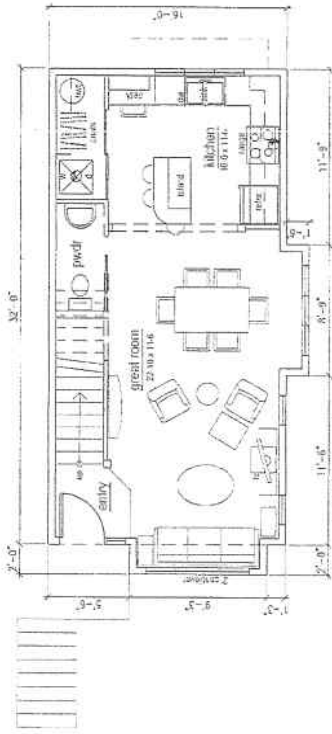
Chubby & Tubby Workforce Housing - L3 Site
 Seattle, Washington

SEED
 April 16, 2008



level 2 floor plan

- single master bedroom
- large bath w/ linen
- den alcove w/ window (natural light in hallway)

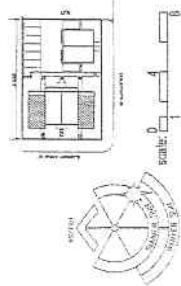


level 1 floor plan

- island kitchen
- large windows front & rear & side
- desk alcove (laundry upstairs)
- optional location for laundry downstairs

"great room" concept - 2 bed room + den alcove - end units

unit area: upstairs 518 sf
downstairs 544 sf
total 1062 sf



SEED

April 16, 2008



Chubby & Tubby Workforce Housing - L3 Site
Seattle, Washington