



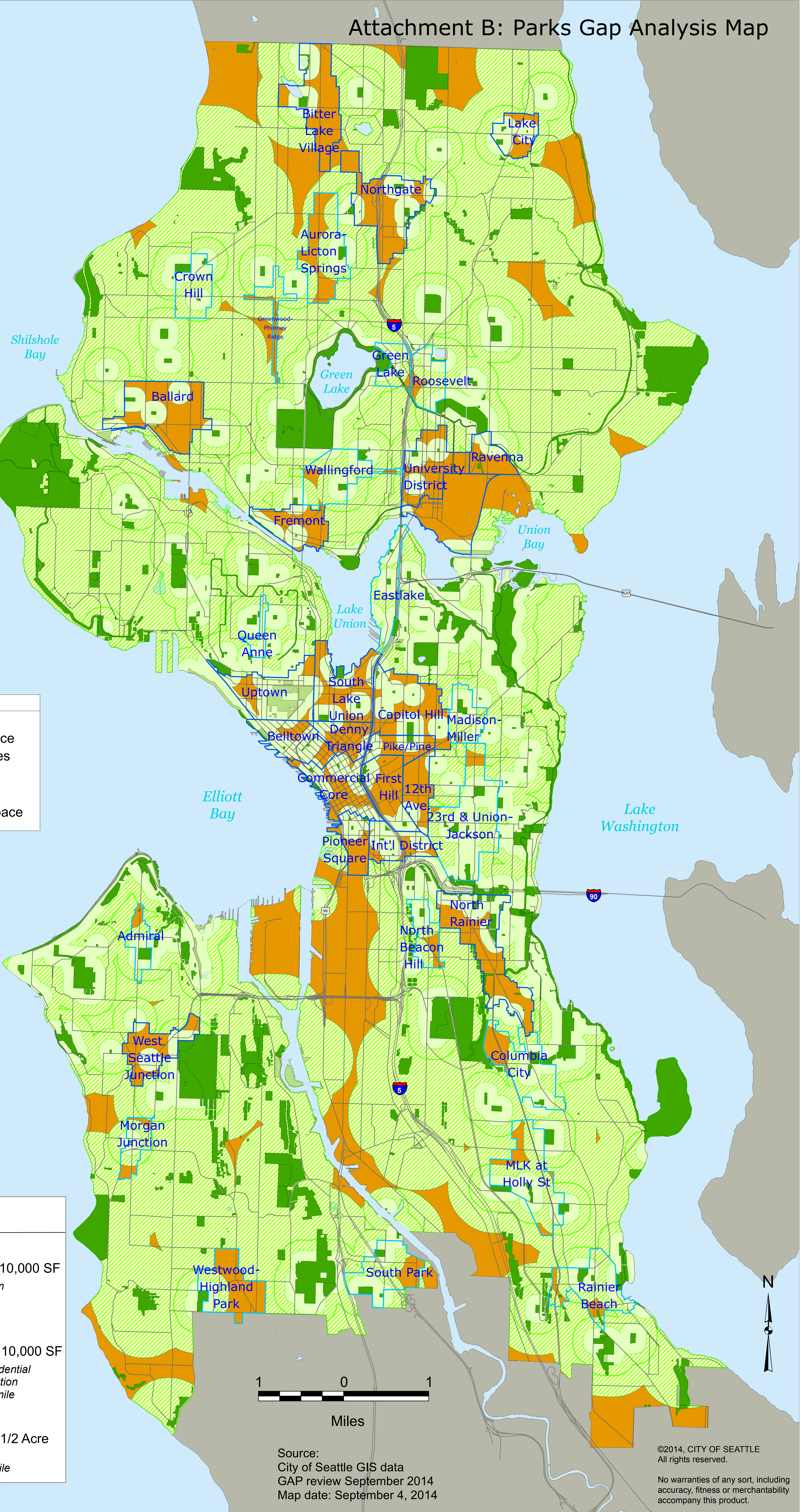
Gaps in Usable Open Space

**LEGEND**

- City of Seattle Parks
- Non-City Park/Open Space
- Residential Urban Villages
- Urban Center Villages & Hub Urban Villages
- Gaps in Usable Open Space

**Service Area Criteria for Usable Open Space (UOS)**

- 1/8 Mile Service Area of Usable Open Space over 10,000 SF
  - UOS of 10,000 SF or more for Urban Centers and Hub Urban Villages accessible within 1/8 mile
- 1/4 Mile Service Area of Usable Open Space over 10,000 SF
  - UOS of 10,000 SF or more for Residential Urban Villages, depending on population density, accessible within 1/8 to 1/4 mile
- 1/2 Mile Service Area of Usable Open Space over 1/2 Acre
  - UOS of 1/2 Acre or more for Single Family areas accessible within 1/2 mile



Source:  
City of Seattle GIS data  
GAP review September 2014  
Map date: September 4, 2014

©2014, CITY OF SEATTLE  
All rights reserved.  
  
No warranties of any sort, including accuracy, fitness or merchantability accompany this product.