

# *Fred Hutchinson Cancer Research Center Skybridge*

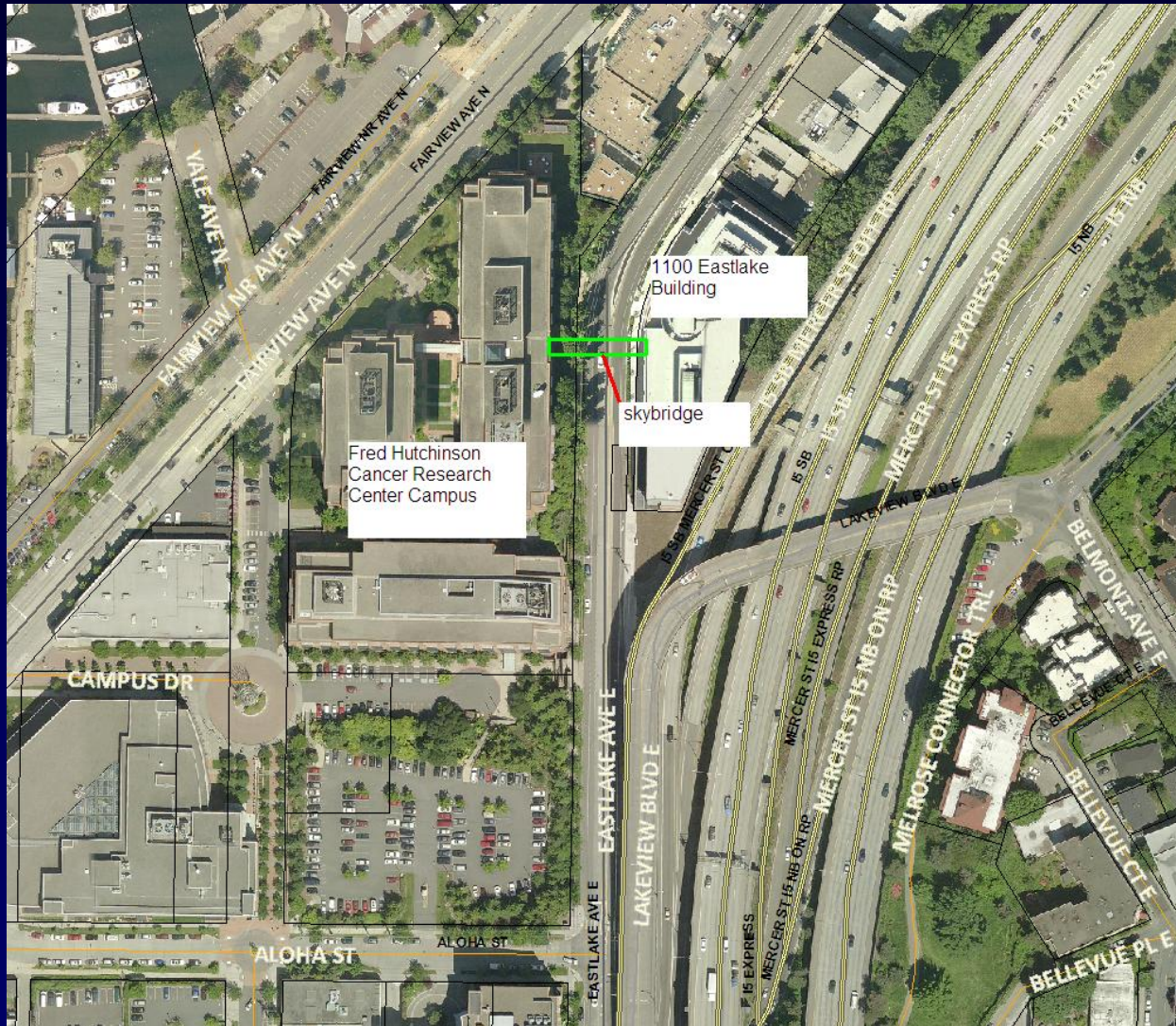




FRED HUTCHINSON  
CANCER RESEARCH CENTER  
A UH OF SEATTLE

PEDESTRIAN BRIDGE - LOOKING NORTH

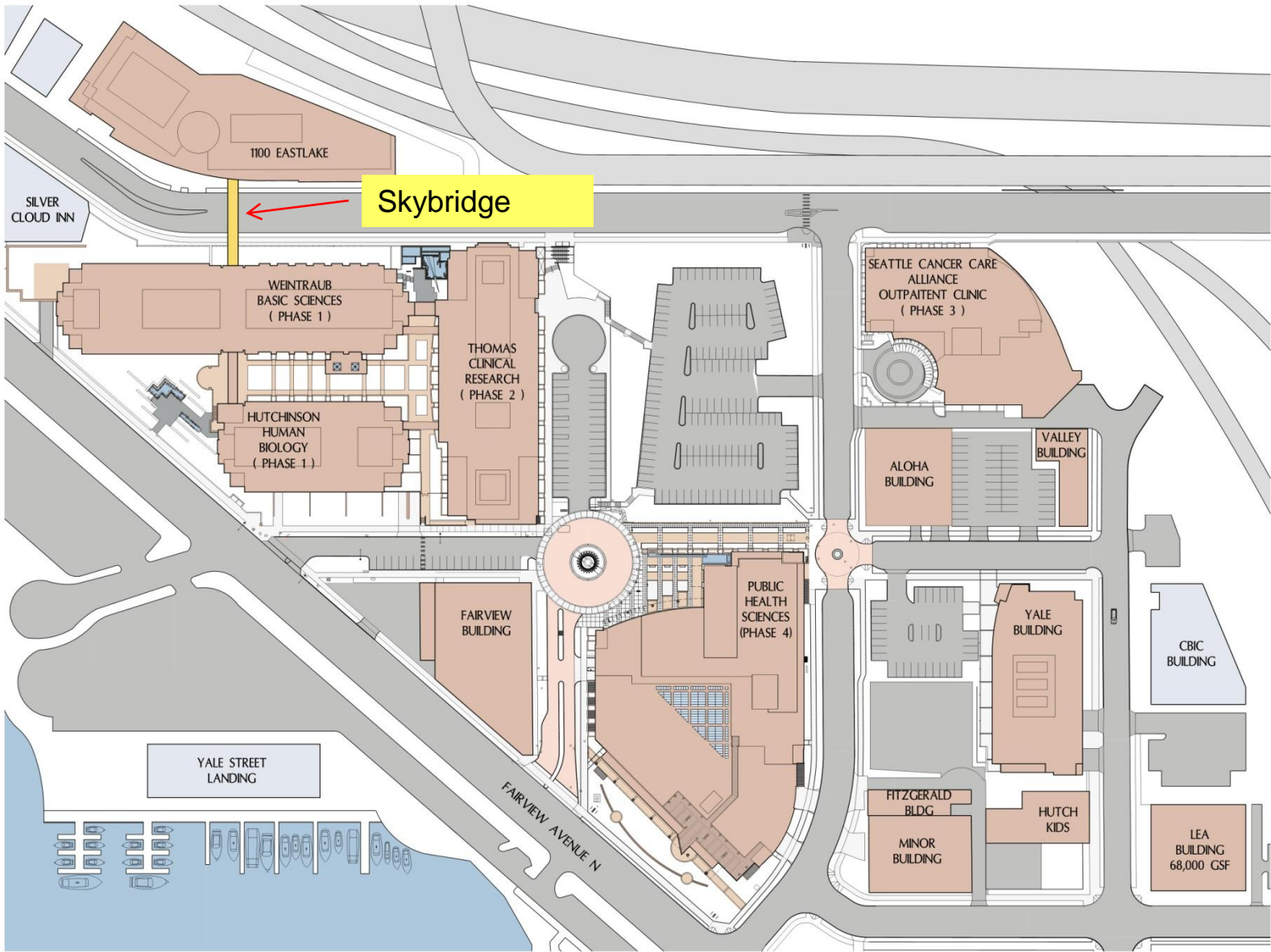
ZGF  
ARCHITECTS



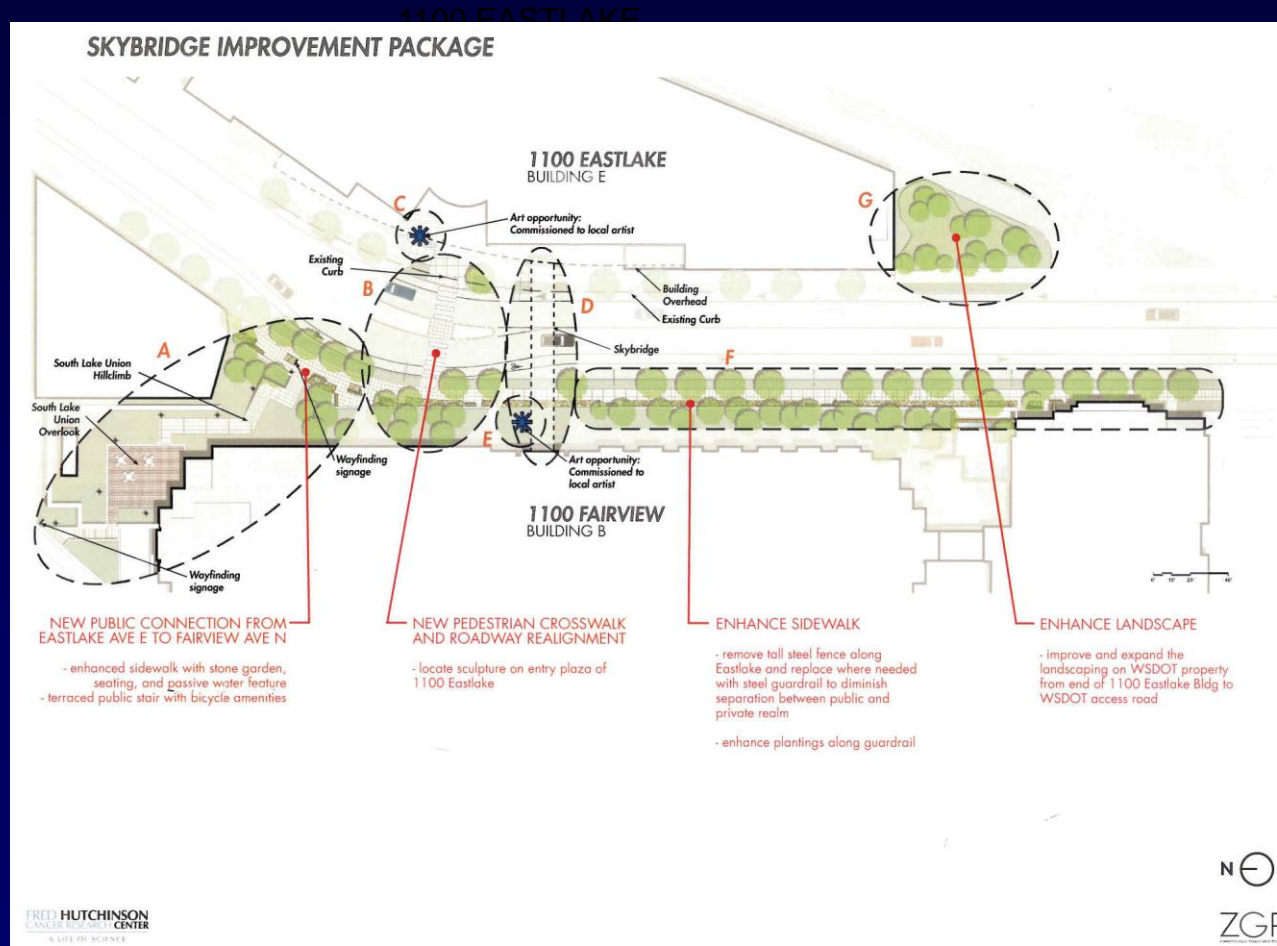
Fred Hutchinson  
Cancer Research  
Center Campus

1100 Eastlake  
Building

skybridge

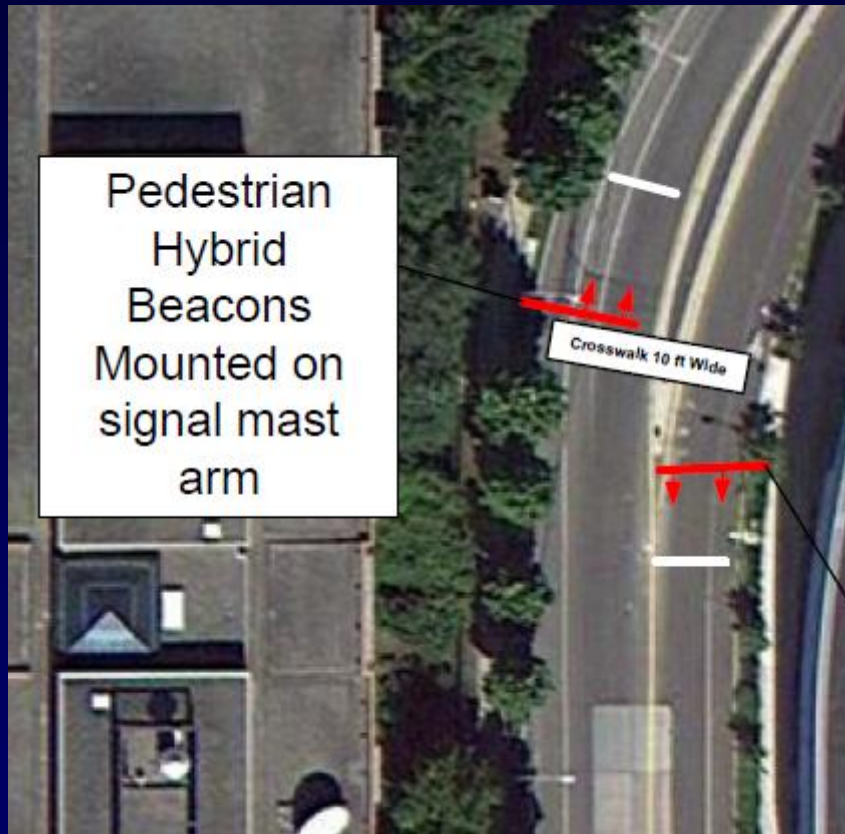


# Public benefit mitigation installations



TUNNEL

# *Public benefit mitigation installations*

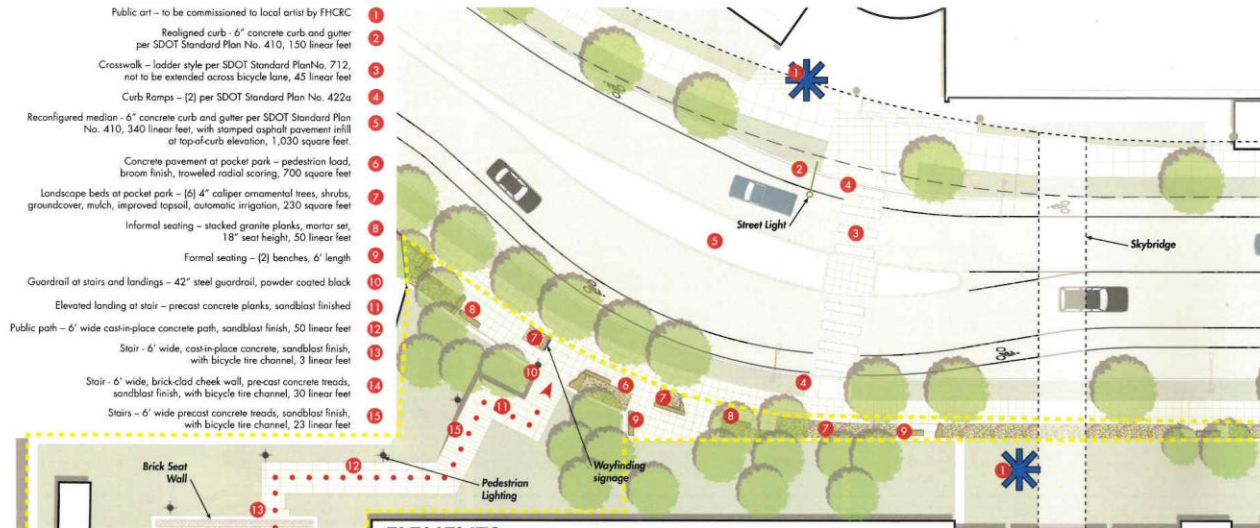


Example of Hybrid Beacon

# Public benefit mitigation installations

## SKYBRIDGE IMPROVEMENT PACKAGE A, B, C, D, E

- 1 Public art – to be commissioned to local artist by FHCRK
- 2 Realigned curb - 6" concrete curb and gutter per SDOT Standard Plan No. 410, 150 linear feet
- 3 Crosswalk – ladder style per SDOT Standard Plan No. 712, not to be extended across bicycle lane, 45 linear feet
- 4 Curb Ramps – (2) per SDOT Standard Plan No. 422a
- 5 Reconfigured median - 6" concrete curb and gutter per SDOT Standard Plan No. 410, 340 linear feet, with stamped asphalt pavement infill at top-of-curb elevation, 1,030 square feet.
- 6 Concrete pavement at pocket park – pedestrian load, broom finish, troweled radial scoring, 700 square feet
- 7 Landscape beds at pocket park – (6) 4" caliper ornamental trees, shrubs, groundcover, mulch, improved topsoil, automatic irrigation, 230 square feet
- 8 Informal seating – stacked granite planks, mortar set, 18" seat height, 50 linear feet
- 9 Formal seating – (2) benches, 6' length
- 10 Guardrail at stairs and landings – 42" steel guardrail, powder coated black
- 11 Elevated landing at stair – precast concrete planks, sandblast finished
- 12 Public path – 6' wide cast-in-place concrete path, sandblast finish, 50 linear feet
- 13 Stair – 6' wide, cast-in-place concrete, sandblast finish, with bicycle tire channel, 3 linear feet
- 14 Stair – 6' wide, brick-clad cheek wall, pre-cast concrete treads, sandblast finish, with bicycle tire channel, 30 linear feet
- 15 Stairs – 6' wide precast concrete treads, sandblast finish, with bicycle tire channel, 23 linear feet



### ELEMENTS



# Public benefit mitigation installations

