

Figure 1: Sworn Police Staffing 2002-2015, per Q1 2013 update

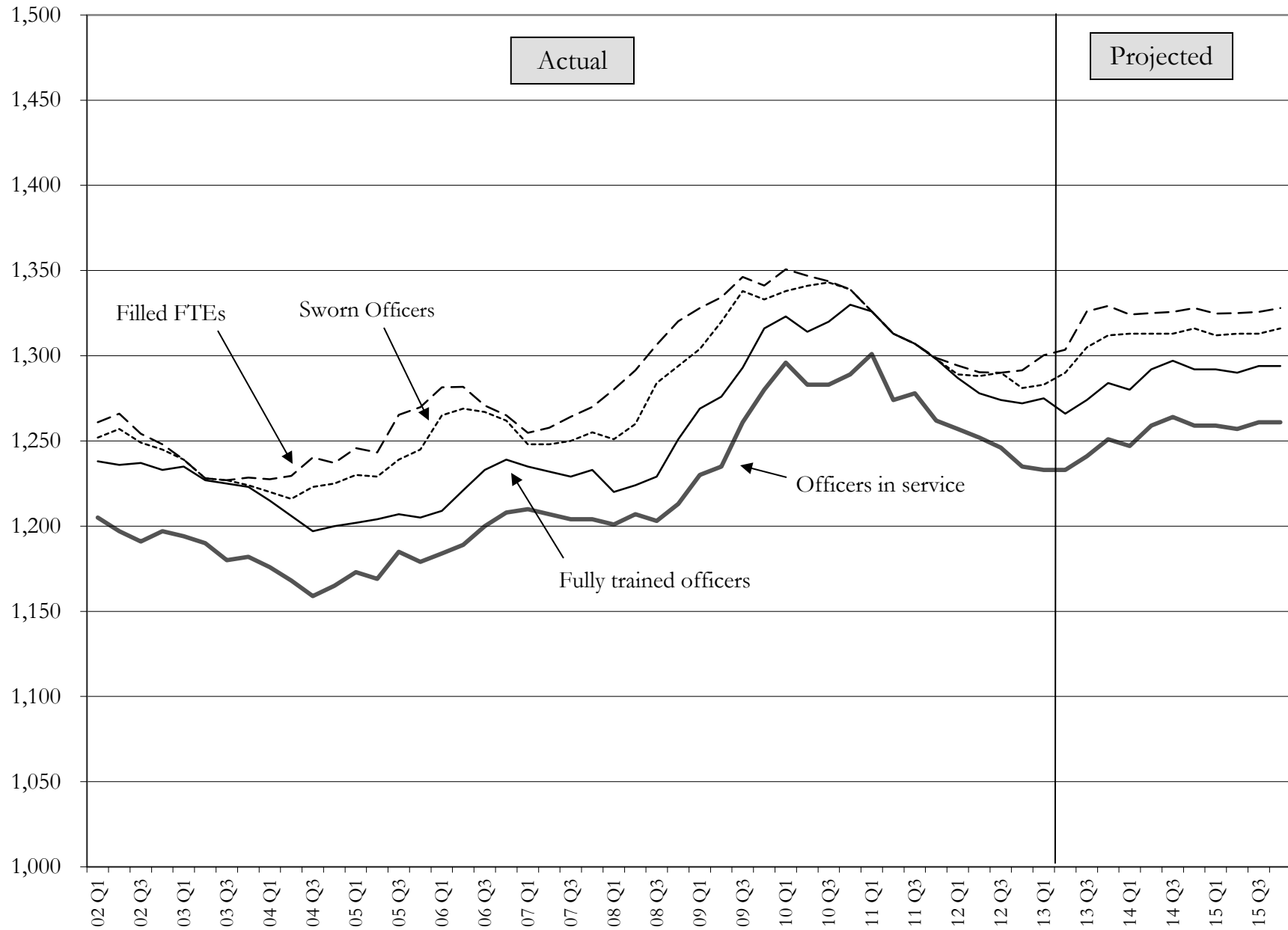


Table 4: Officers and Sergeants assigned to Precincts on April 1, 2013

Precinct	East		North		South		Southwest		West		Total	
% of total 911 call hours	18%		32%		17%		12%		21%		100%	
Officers and Sergeants	Sgt.	Off.	Sgt.	Off.	Sgt.	Off.	Sgt.	Off.	Sgt.	Off.	Sgt.	Off.
Assigned to 911 response	11	84	19	160	13	91	10	70	14	102	67	507
% of total assigned to 911	16%	17%	28%	32%	19%	18%	15%	14%	21%	20%	100%	100%
Clerks		3		1		2		2		2		10
Patrol Wagons		1		3		1		1		2		8
Seattle Center									1	4	1	4
Bike / Foot Beat	1	5		3					4	36	5	44
Anti-Crime Teams	1	6	1	5	1	6	1	5	1	5	5	27
Community Police Teams	1	3	1	7	1	3		3	1	3	4	19
Other		2		2		2			1	6	1	12
Total	14	104	21	181	15	105	11	81	22	160	83	631
"Other" includes Neighborhood Corrections Initiative teams, stationmasters, quartermasters, the mounted patrol and officers assigned to SHA.												
The table includes:												
(a) officers and sergeants unavailable due to vacation, training, limited duty, illness or injury; and												
(b) officers on short term loan to specialty units for training and evaluation.												
The table excludes:												
(a) student officers in field training;												
(b) officers on long term loan to other units;												
(c) officers and sergeants on military leave; and												
(d) precinct detectives.												

Table 5: Officers and Sergeants in the Precincts, 2010-2013

Assignment:	911 response		Other duties		Total	
	Sergeants	Officers	Sergeants	Officers	Sergeants	Officers
April 2010	64	559	15	123	79	682
June 2011	62	545	18	148	80	693
April 2012	64	524	15	142	79	666
April 2013	67	507	16	124	83	631