

Executive Proposal 2014-2019 King County Parks Levy



Briefing to the Parks & Neighborhoods Committee
of the Seattle City Council

April 18, 2013

Kevin Brown, Division Director

Kevin.brown@kingcounty.gov

206-296-8631

200 PARKS 175 MILES OF TRAIL 26,000 ACRES OF OPEN SPACE

King County Parks **Your**  King County
Big Backyard

Our Vision



**Providing regional
and rural
recreational facilities**



**Partnering with
business and
community**



**Connecting the county:
Regional Trails System
and open space corridors**



Regional levy, local benefits

Integrally linked systems: *seamless transition for the public from city to city, cities to UGA, cities to rural areas, rural areas to state and federal lands.*

Trail connections: *between regional and local trails, linking transit hubs, park and rides, civic and business centers.*

Open space connectivity: *buffer areas, along riparian and wildlife corridors (ex: Cougar Mountain, Soos Creek, Juanita Woodlands).*

County-owned facilities meet regional demand for recreation (ex: Marymoor, King County Aquatic Center, Petrovitsky, Big Finn Hill, Tolt-MacDonald, Duthie Hill).

Pass-thru funds to cities *help local park and trail projects as grant match or supplemental local project funding.*

Complementary Systems

Tanner Landing Park



Close-in, year-round, destination recreation

Hiking

Trail running

Mountain biking

Cycling

Rock climbing

Whitewater Rafting

Velodrome racing

Swimming

Camping

Paragliding

Wildlife watching

Horseback riding

Tolt-MacDonald Park



Duthie Hill Park



Cougar-Squak
Corridor



Cougar Mountain Park



Marymoor Park



Island Center Forest

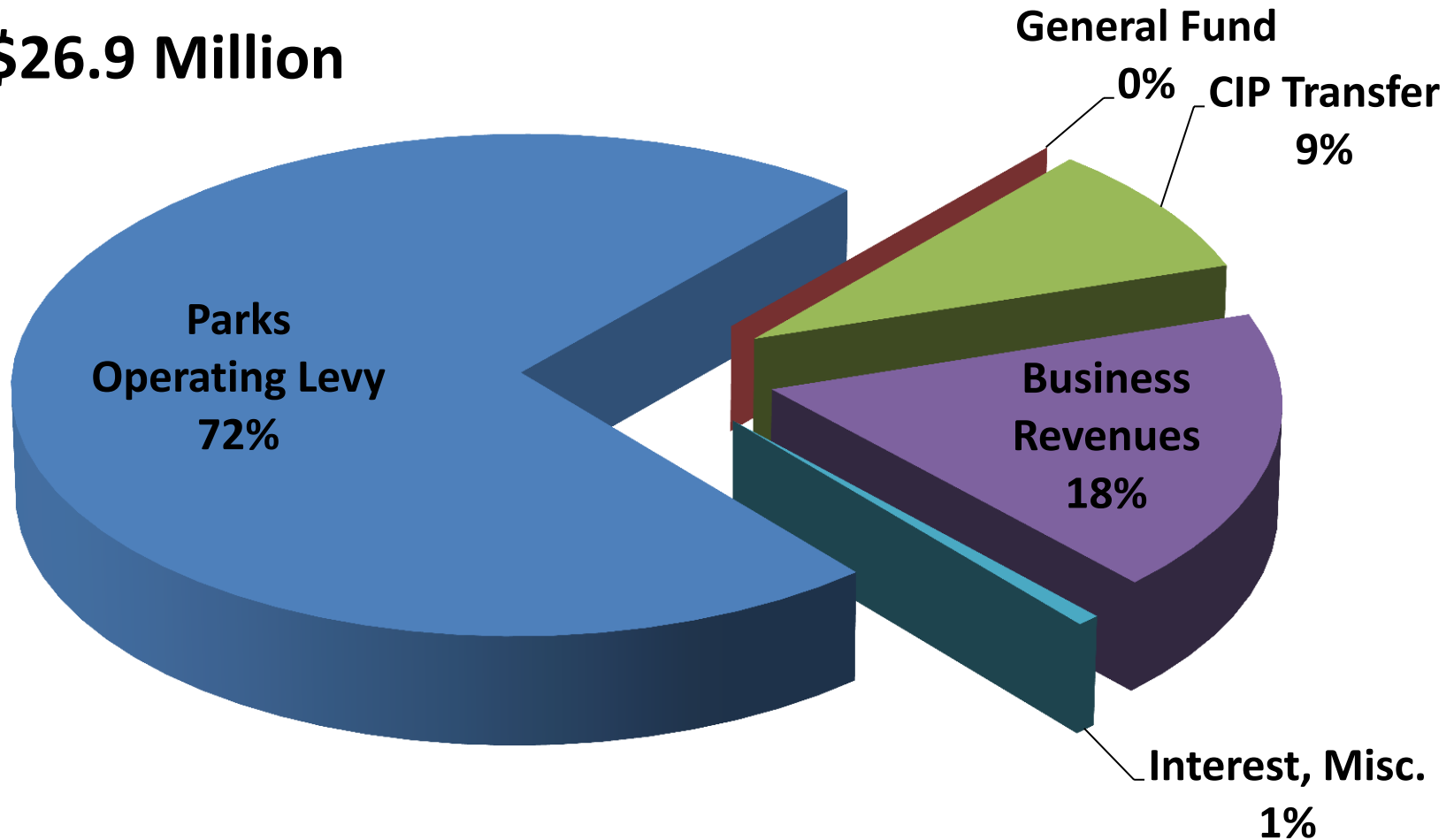
2008-2013 Operations & Maintenance Levy



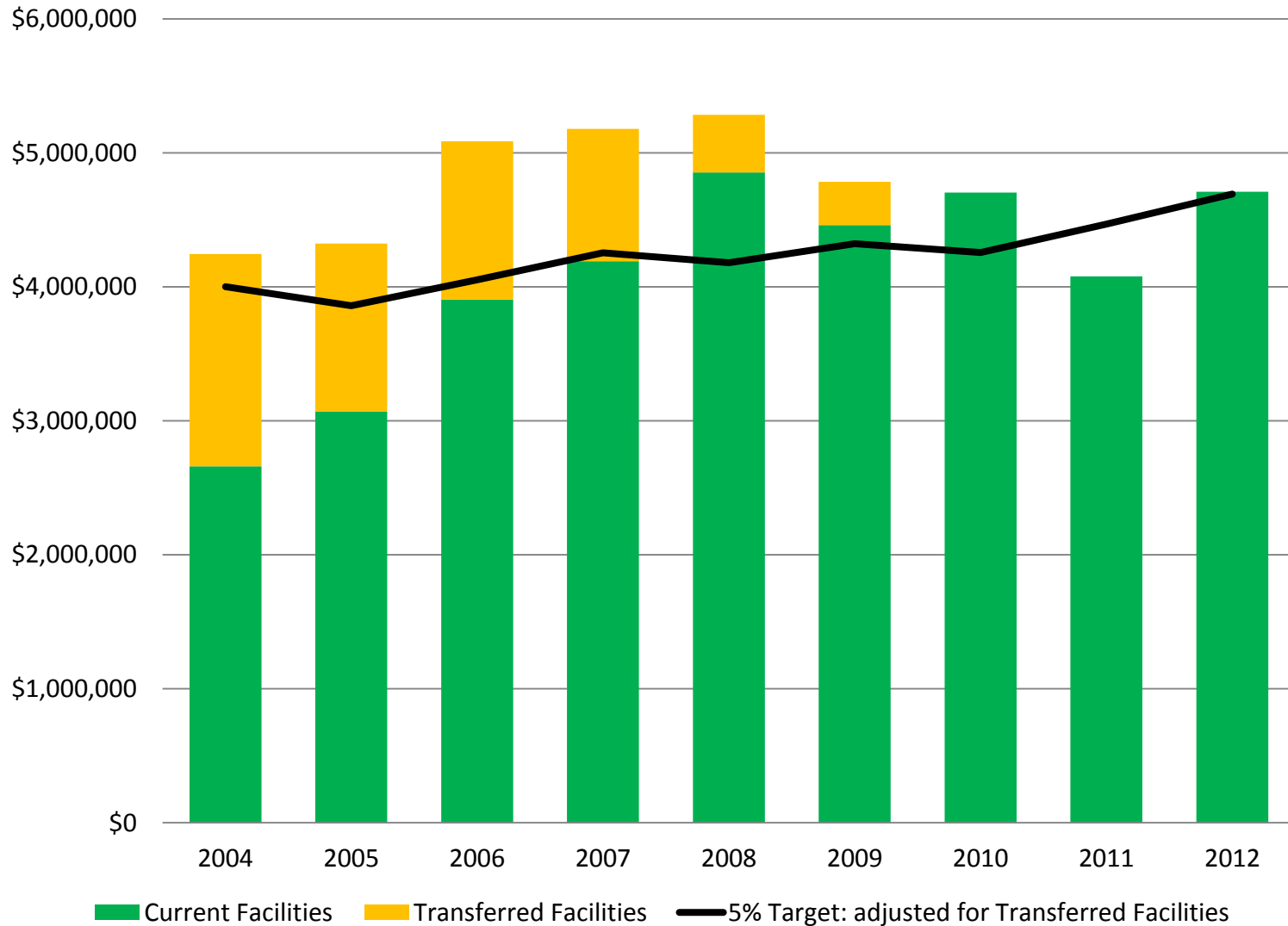
- Approved in August 2007 by more than 63%
- Levy lid lift with annual CPI adjustment
- Funds O&M of King County's regional and rural parks and the Regional Trails System
- Can't be used for parks in UGA
- Provides approx 70% of operating funds
- 2013 effective levy rate = 6.7¢ or \$22.63/yr for owner of a \$340,000 home

2012 Adopted Revenues

\$26.9 Million



King County Parks Business Revenues



Business Revenues: Economic Impact Beyond the Park



- ✓ Revenue for operations
- ✓ New or enhanced amenities
- ✓ Promotion of parks, trails, facilities among public
- ✓ Creates economic benefits for adjacent communities:
 - Dive trials = \$2.3 million
 - Cirque = \$10-\$15 million

2008-2013 O&M Levy: Benefits to Cities

King County Operating Portion of Levy	% of O&M Levy	% of Regional Expenditures
O&M for Regional Trails (i.e. BGT, ELST, Cedar, Soos Creek)	13.5%	15.5%
O&M for Regional Active Parks (i.e. Marymoor, KCAC, Big Finn Hill)	62.2%	71.7%
O&M for Regional Open Space (i.e. Cougar, Soaring Eagle, Black Diamond)	11.0%	12.7%
O&M for Rural Parks (i.e. May Valley, Ravensdale)	9.6%	
O&M for UGA Parks (i.e. Skyway, Lakewood)	3.6%	

2008-2013 Open Space & Trails Levy

- Approved in August 2007 by 59%
- Levy lid lift with annual CPI adjustment
- Can't be used for major maintenance, facility enhancement by County and cities
- 2013 effective levy rate = 6.7¢ or \$22.63/yr for owner of a \$340,000 home

King County Parks 60% (= 3¢)	39 Cities 20% (= 1¢)	Woodland Park Zoo 20% (= 1¢)
<ul style="list-style-type: none"> • Open Space & Natural Lands Acquisition (approx 1¢) • Regional Trail Acquisition & Development (approx 2¢) • Community Partnerships & Grants Program (≤ \$500k / yr) 	<p>Proportional allocations based on</p> <ul style="list-style-type: none"> • Population (50%) • Assessed value (50%) <ul style="list-style-type: none"> • Open Space & Natural Lands Acquisition • Trail Acquisition & Development 	<ul style="list-style-type: none"> • Environmental Education & Conservation Programs • Operations • Capital Improvement Projects, excluding parking

2008-2013 Open Space & Trails Levy: Benefits to Cities

King County Parks 60% (= 3¢)

- Open Space & Natural Lands Acquisition
- Trail Acquisition & Development

39 Cities 20% (= 1¢)

- Open Space & Natural Lands Acquisition
- Trail Acquisition & Development

Woodland Park Zoo 20% (= 1¢)

- Environmental Education & Conservation Programs
- Capital Improvement Projects

\$42 million over 6 years invested in Regional Trails System (RTS)

Of that, **\$41.16 million (98%)** spent on trail projects in cities



Burke-Gilman Trail
*Connects to Seattle,
provides important
commuter and
recreation corridor*

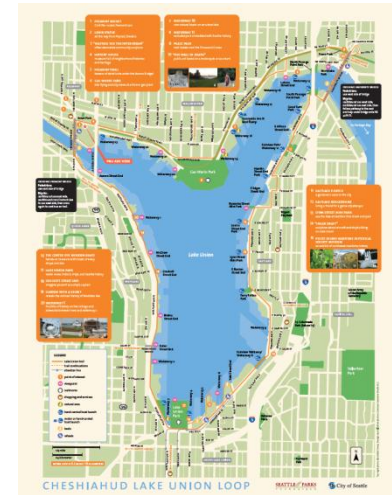
*Renovation improved
safety and sightlines on
oldest section of trail*

2008-2013 Open Space & Trails Levy: Benefits to Cities

<p>King County Parks 60% (= 3¢)</p> <ul style="list-style-type: none"> • Open Space & Natural Lands Acquisition • Trail Acquisition & Development
<p>39 Cities 20% (= 1¢)</p> <ul style="list-style-type: none"> • Open Space & Natural Lands Acquisition • Trail Acquisition & Development
<p>Woodland Park Zoo 20% (= 1¢)</p> <ul style="list-style-type: none"> • Environmental Education & Conservation Programs • Capital Improvement Projects

\$7.2 million
allocated to Seattle
(2008-2012)

- Cheshiahud Loop Trail
- Lake Union Ship Canal Trail
- Chief Sealth Trail
- Burke Gilman Trail Extension

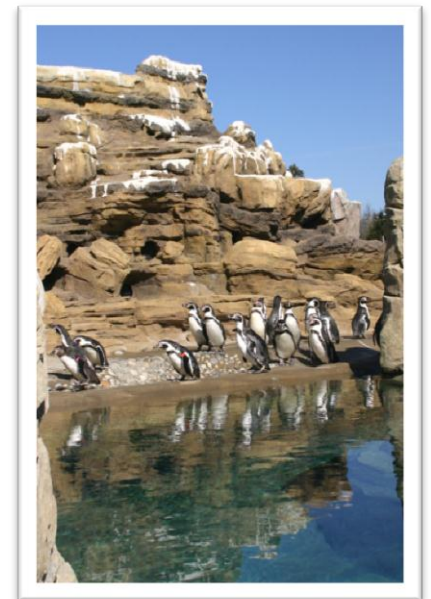


2008-2013 Open Space & Trails Levy: Benefits to Cities

<p>King County Parks 60% (= 3¢)</p> <ul style="list-style-type: none"> • Open Space & Natural Lands Acquisition • Trail Acquisition & Development
<p>39 Cities 20% (= 1¢)</p> <ul style="list-style-type: none"> • Open Space & Natural Lands Acquisition • Trail Acquisition & Development
<p>Woodland Park Zoo 20% (= 1¢)</p> <ul style="list-style-type: none"> • Environmental Education & Conservation Programs • Capital Improvement Projects

\$18.2 million
allocated to Zoo
(2008-2012)

- Environmental education
- School programs
- Animal care / care for endangered species
- Penguin exhibit



2008-2013 Open Space & Trails Levy: Open Space Acquisitions

Island Center Forest Additions
(Vashon Island)



Cougar Mountain Additions

Three Forks Natural Area Additions
(Mount Si Area)



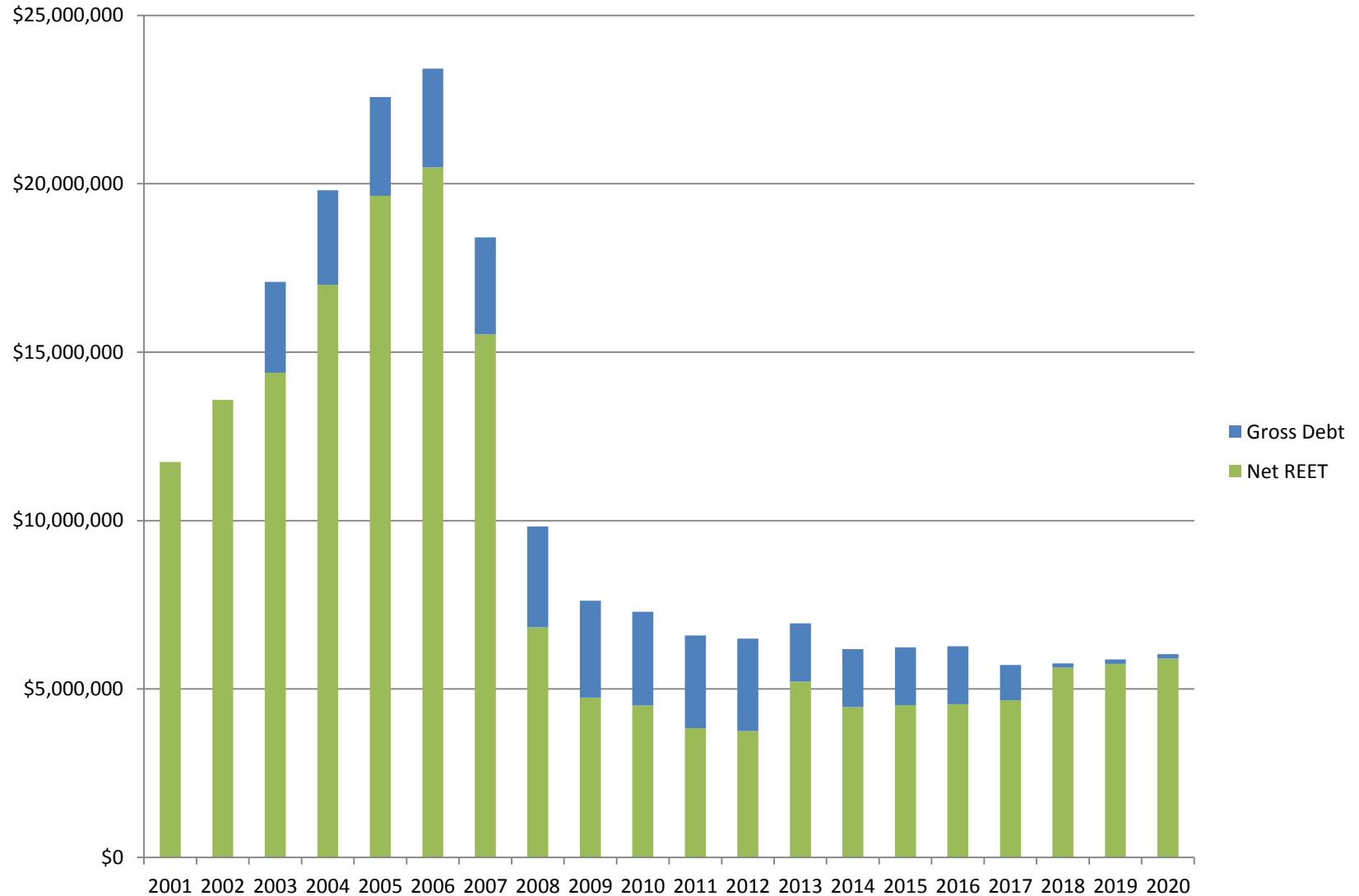
Cedar River Corridor

Effective Parks Levy Rates as of 2013 (Levies expire in 2013)

Operations & Maintenance Levy	Rate (in cents)	\$ per HH*
Regional/rural parks, trails, and open space	6.7	22.60
Open Space & Trails Levy		
Regional Open Space Acquisition	1.3	4.40
Regional Trails System	2.5	8.40
Community Partnerships & Grants	0.2	.50
Cities	1.3	4.40
Woodland Park Zoo	1.3	4.40
Total (rounded)	13.4	44.80

*Based upon \$337k per average household

REET 1 & 2 Combined OEFA Forecast – August 2012, Net Debt Service



- OEFA Projections assume some future annexations: 2013—North Highline; 2014—West Hill & Klahanie
- Other annexations not assumed in forecast: Fairwood, E. Federal Way, E. Renton Plateau, and other undesignated urban islands

Planning for the Future



200 PARKS 175 MILES OF TRAIL 26,000 ACRES OF OPEN SPACE

King County Parks **Your**  King County
Big Backyard

Mission of Task Force

The King County Parks Levy Task Force is charged by King County Executive Dow Constantine to make recommendations by September 2012 addressing the following issues:

- *What should be done to preserve the County's 26,000-acre system of parks and trails after the current operating and capital levies expire at the end of 2013?*
- *What should be done to meet the future parks and recreation needs of King County residents?*

The Task Force should outline the structure and scope of any funding options it recommends. The Task Force recommendations should promote the goals of the County's equity and social justice initiative to promote fairness and opportunity and eliminate inequities and should further King County Strategic Plan priorities, including service excellence, environmental sustainability, and financial stewardship.

Parks Levy Goals

Goal 1

Take Care of What We Have

- Continue O&M at current level of service, including basic care of Maury site, ERC
- Continue funding for 4-H, White Center Teen Program

Goal 2

Grow/Connect Regional Open Space and Natural Lands

- For habitat, water quality, recreation
- Focus on strategic acquisition zones to maximize protection of natural area corridors

Goal 3

Improve Regional Trails System and Regional Mobility

- Address missing trail connections
- Connect transit, park & rides to trails
- Invest in ERC, Lake to Sound corridors
- Coordinate with cities, Sound Transit

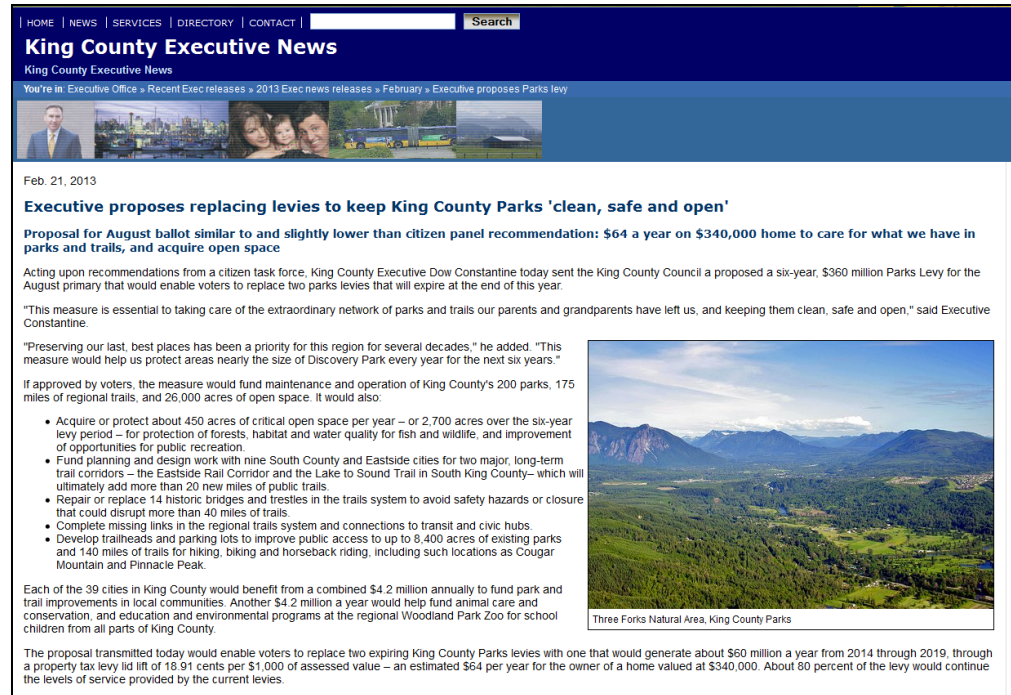
Goal 4

Make Parks More Accessible

- Expand access to existing parklands by building/improving trailheads
- Address equity/access issues through Community Partnerships & Grants Program
- Encourage strong links with city parks, Zoo, community centers, non-profits

Task Force-Recommended and Executive-Proposed Parks Levy

- 2014 – 2019
- Property tax levy lid lift
- CPI-adjusted
- 80% = continuation of levels of service in current levies, including support to cities and zoo



HOME | NEWS | SERVICES | DIRECTORY | CONTACT | Search

King County Executive News

King County Executive News

You're in: Executive Office » Recent Exec releases » 2013 Exec news releases » February » Executive proposes Parks levy

Feb. 21, 2013

Executive proposes replacing levies to keep King County Parks 'clean, safe and open'

Proposal for August ballot similar to and slightly lower than citizen panel recommendation: \$64 a year on \$340,000 home to care for what we have in parks and trails, and acquire open space

Acting upon recommendations from a citizen task force, King County Executive Dow Constantine today sent the King County Council a proposed a six-year, \$360 million Parks Levy for the August primary that would enable voters to replace two parks levies that will expire at the end of this year.

"This measure is essential to taking care of the extraordinary network of parks and trails our parents and grandparents have left us, and keeping them clean, safe and open," said Executive Constantine.


"Preserving our last, best places has been a priority for this region for several decades," he added. "This measure would help us protect areas nearly the size of Discovery Park every year for the next six years."

If approved by voters, the measure would fund maintenance and operation of King County's 200 parks, 175 miles of regional trails, and 26,000 acres of open space. It would also:

- Acquire or protect about 450 acres of critical open space per year – or 2,700 acres over the six-year levy period – for protection of forests, habitat and water quality for fish and wildlife, and improvement of opportunities for public recreation.
- Fund planning and design work with nine South County and Eastside cities for two major, long-term trail corridors – the Eastside Rail Corridor and the Lake to Sound Trail in South King County– which will ultimately add more than 20 new miles of public trails.
- Repair or replace 14 historic bridges and trestles in the trails system to avoid safety hazards or closure that could disrupt more than 40 miles of trails.
- Complete missing links in the regional trails system and connections to transit and civic hubs.
- Develop trailheads and parking lots to improve public access to up to 8,400 acres of existing parks and 140 miles of trails for hiking, biking and horseback riding, including such locations as Cougar Mountain and Pinnacle Peak.

Each of the 39 cities in King County would benefit from a combined \$4.2 million annually to fund park and trail improvements in local communities. Another \$4.2 million a year would help fund animal care and conservation, and education and environmental programs at the regional Woodland Park Zoo for school children from all parts of King County.

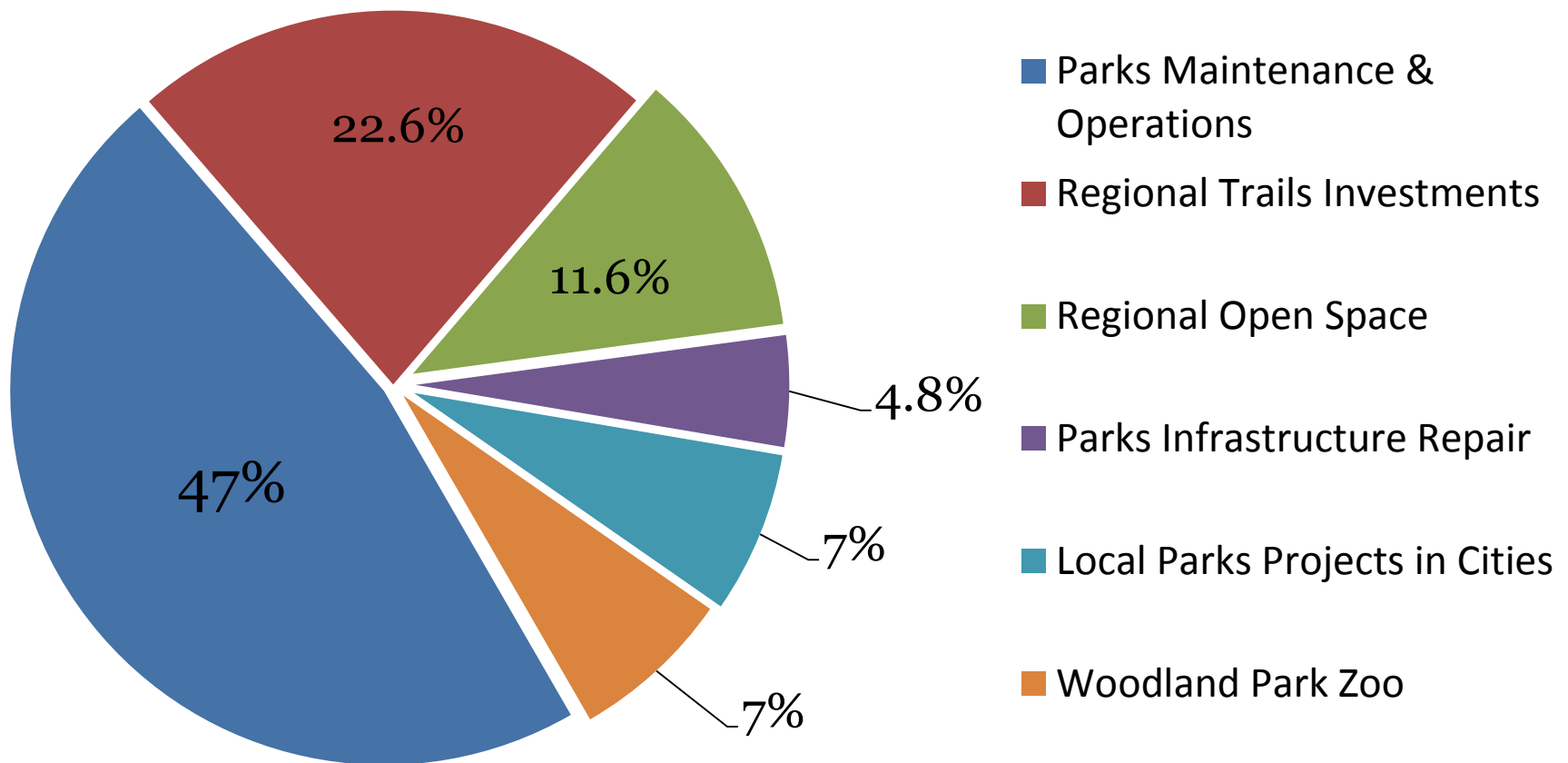
The proposal transmitted today would enable voters to replace two expiring King County Parks levies with one that would generate about \$60 million a year from 2014 through 2019, through a property tax levy lid lift of 18.91 cents per \$1,000 of assessed value – an estimated \$64 per year for the owner of a home valued at \$340,000. About 80 percent of the levy would continue the levels of service provided by the current levies.



Three Forks Natural Area, King County Parks

Executive-Proposed 2014-2019 Parks Levy

18.91 cents = approx \$64 for owner of \$340,000 home



Executive-Proposed 2014-2019 Parks Levy

		Component	Levy Rate (cents)	Annual \$ (millions)	\$ per HH (annual)
80%	Continuing Current Level of Effort 14.89¢/\$47.7M/\$50.10 per HH	County Parks Operations and Maintenance	8.29	\$26.6	\$28.00
		Regional Open Space Acquisition	1.32	\$4.2	\$4.40
		Regional Trails System	2.48	\$8.0	\$8.40
		Community Partnerships and Grants	0.16	\$0.5	\$0.50
		Cities' Parks and Trails	1.32	\$4.2	\$4.40
		Woodland Park Zoo	1.32	\$4.2	\$4.40
20%	Strategic Enhancements 4.02¢/\$13.0M/\$13.60 per HH	Preserve/Protect ERC Corridor ¹	0.23 0.18	\$0.8 \$0.6	\$0.80 \$0.60
		4-H Program	0.03	\$0.1	\$0.10
		Community Partnerships and Grants	0.08	\$0.3	\$0.30
		Infrastructure Repair and Preservation ²	0.80 0.40	\$2.6 \$1.3	\$2.70 \$1.30
		Bridges and Trestles	0.30	\$1.0	\$1.00
		Trailhead Development and Accessibility	0.20	\$0.6	\$0.70
		Regional Open Space Acquisition ²	0.68 0.88	\$2.2 \$2.8	\$2.30 \$3.00
		New Trail Corridor Development	1.80	\$5.8	\$6.10
		Peak Season Core Maintenance ²	0.10	\$0.3	\$0.30
		Enforcement and Safety ¹	0.05	\$0.2	\$0.20
TOTAL			18.91¢	\$60.7M	\$63.70

Changes from Task Force Recommendation:

¹ Due to revised cost estimates for scope of work, reduced Preserve/Protect ERC Corridor by \$175K to fund Enforcement and Safety.

² Reduced amount for Infrastructure Repair and Preservation, shifting \$600K to be funded from REET and reallocating \$600K to provide additional funds for Regional Open Space Acquisition and fund Peak Season Core Maintenance.

Executive-Proposed 2014-2019 Parks Levy: Benefits to Cities

King County Operating Portion of Levy *	Levy rate	Annual \$\$	\$\$/HH
O&M for Regional System (Parks, Trails, KCAC)	7.2	23,100,000	24.20
O&M for Rural Parks	0.8	2,400,000	2.60
<u>O&M for UGA Parks</u>	<u>0.3</u>	<u>1,000,000</u>	<u>1.10</u>
O&M for County Parks	8.3	26,500,000	27.90

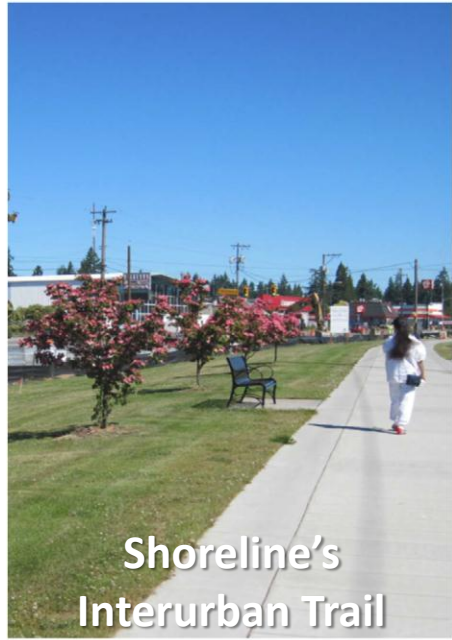
	Levy rate	Annual \$\$	\$\$/HH
Pass-through to Cities	1.3	4,200,000	4.40

Regional Trails System capital investments	Levy rate	Annual \$\$	\$\$/HH
Regional Trails System Development	1.9	6,000,000	6.30
<u>New Trail Corridor Development</u>	<u>1.7</u>	<u>5,500,000</u>	<u>5.80</u>
Regional Trails System Investment	3.6	11,500,000	12.10

* Notes:

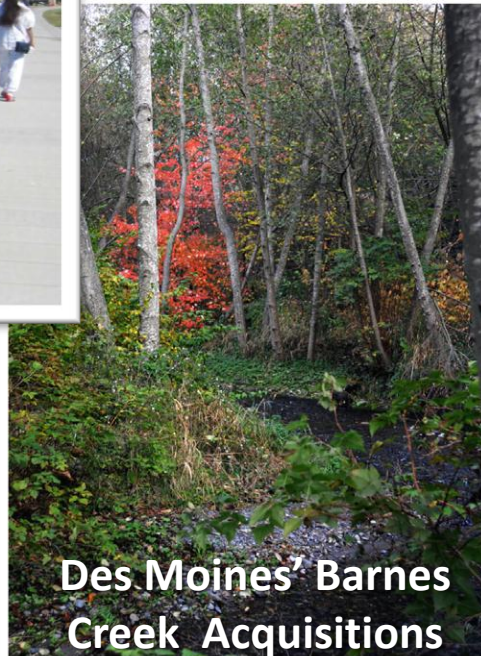
- Based on the relative AV of each jurisdiction in 2011 (the latest available which is the basis for 2012 collections)
- Total collections and rates based on levy model for 2014
- Unincorporated tax payers' contribution to cities' portion of levy: 0.1 cent levy rate/\$400,000 annual/\$0.50 per household

Executive-Proposed 2014-2019 Parks Levy: Pass-Thru to Cities



Shoreline's
Interurban Trail

Examples of past
King County Parks
Levy-funded projects



Des Moines' Barnes
Creek Acquisitions

- ✓ Level of support consistent with current levy
- ✓ For any local parks and recreation capital purpose (*less restrictive than current levy*)
- ✓ Distributed annually, by AV and population

Executive-Proposed 2014-2019 Parks Levy: Regional Trails



King County Parks **Your Big Backyard** King County

Regional Trails System: Making Connections and Enhancements

- ✓ Take care of existing Regional Trails System
- ✓ Improve regional mobility
- ✓ Address missing trail connections
- ✓ Connect trails to transit, civic hubs
- ✓ Coordinate with local, regional jurisdictions

Proposed Trail Investments: Focus on Connections, Regional Mobility

- **Duwamish to Green River Trail** – connecting Seattle to Tukwila, SeaTac
- **Lake to Sound Trail** – connecting Burien, Des Moines, Renton, SeaTac, Tukwila
- **Eastside Rail Corridor** – connecting Bellevue, Kirkland, Newcastle, Redmond, Renton, Woodinville
- **East Lake Sammamish Trail** – connecting Issaquah, Redmond, Sammamish
- **Green to Cedar Rivers Trail** – connecting Black Diamond, Covington, Maple Valley
- Other trail projects located in Bothell, Enumclaw, Kenmore, Kent, Snoqualmie

Executive-Proposed 2014-2019 Parks Levy: Regional Open Space



King County Parks
Your Big Backyard 

Strategic Acquisition Zones

-  Strategic Acquisition Zones
-  Regional Trail
-  Local Trail
-  King County Parks
-  Other Parks and Public Land
-  Urban Areas

The information included on this map has been compiled by King County staff from a variety of sources and is subject to change without notice. King County makes no warranties, express or implied, as to accuracy, completeness, timeliness, or rights to the use of such information. This document is not intended to constitute a contract. King County shall not be liable for any direct, indirect, incidental, or consequential damages, including lost profits, arising out of or from the use of this map or the use of the information contained on this map. Any use of this map or the information on this map is prohibited except by written permission of King County.

Data: King County Database, File 1394_2008_park_2008.cu, vgn
kingcounty.gov/parks/levy

- ✓ Connectivity / Adjacency
- ✓ Public access
- ✓ Protect regional watersheds and streams (informed by WRIA and Open Space Plans, CFT criteria)
- ✓ Provide multiple benefits (recreation, public access, habitat protection)
- ✓ Build upon prior public land investments

King County Parks **Your Big Backyard** 

2013 Ballot Measure Deadlines

For August 6, 2013 Election

Measure filed with Elections Department <i>Friday before filing week per RCW 29A.04.321(3)</i>	5/10/13
Last special council meeting to pass as an emergency	5/10/13
Last regular council meeting to pass as an emergency	5/6/13
Last regular council meeting with minimum processing time (10 days)	4/29/13
Last regular council meeting with maximum processing time (25 days)	4/15/13

Questions?



200 PARKS 175 MILES OF TRAIL 26,000 ACRES OF OPEN SPACE

King County Parks **Your**  King County
Big Backyard