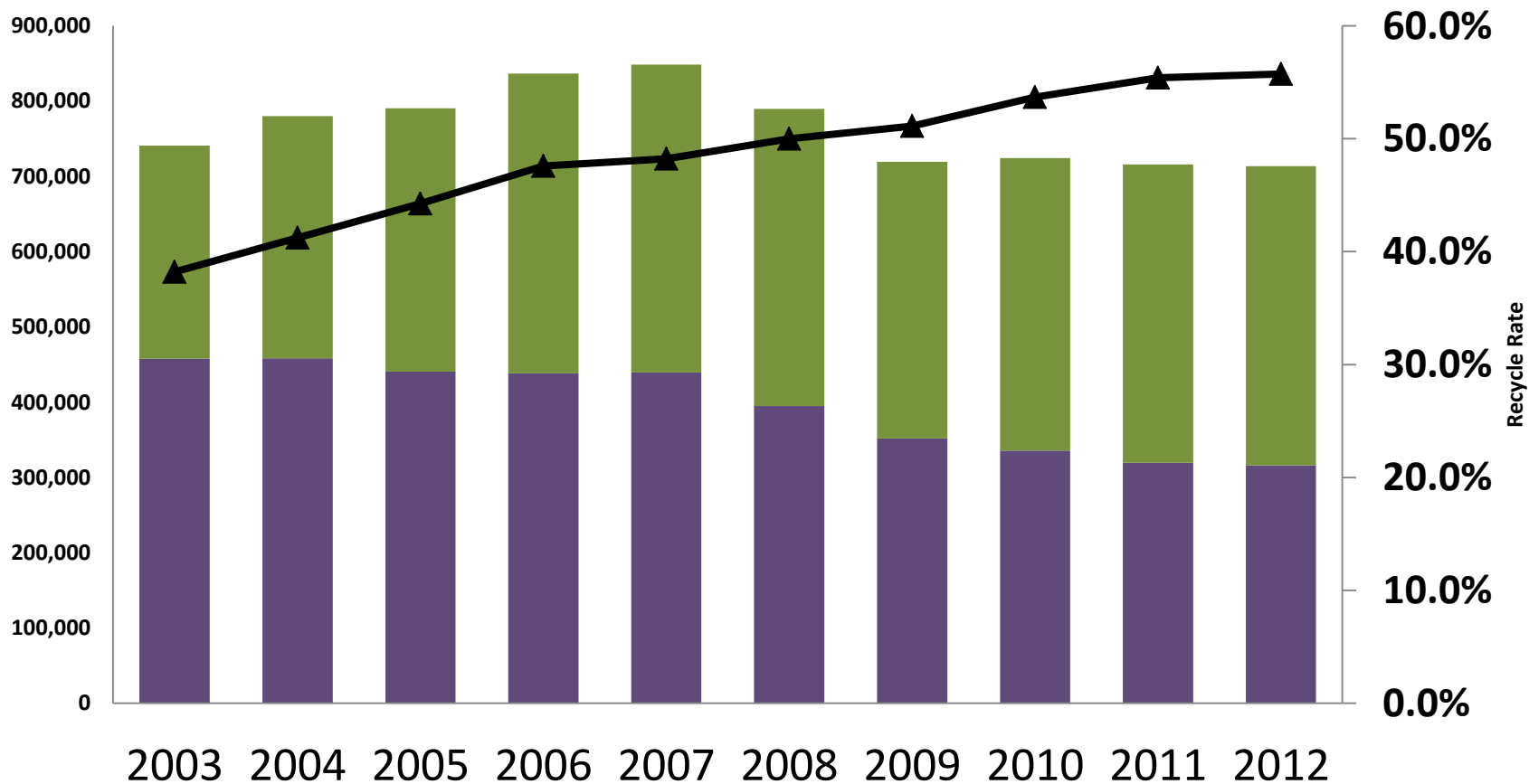


# **Council Briefing**

## **2012 Recycle Rate**

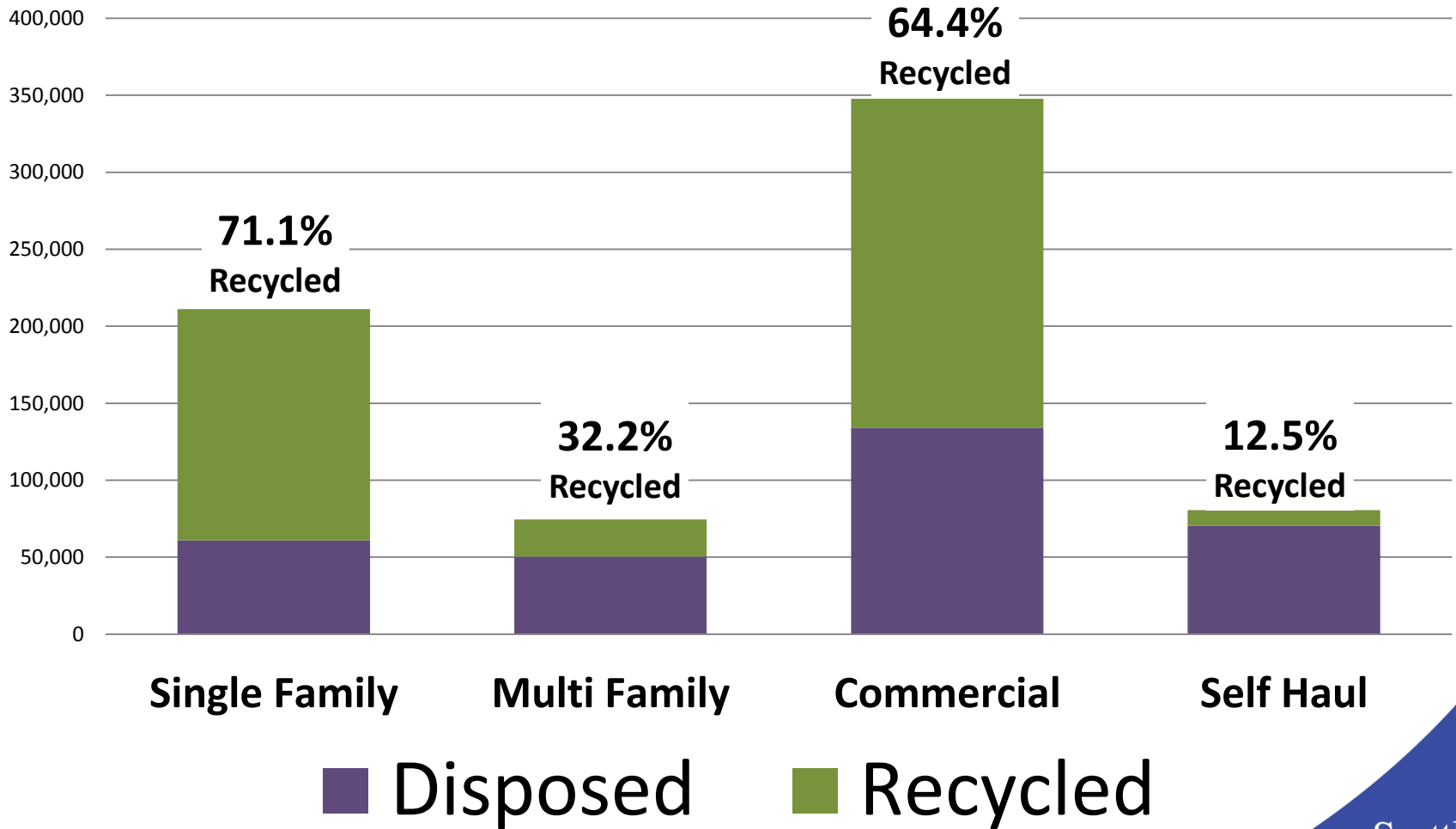
LUC Presentation  
September 12, 2013

# Overall Tons & Recycle Rate

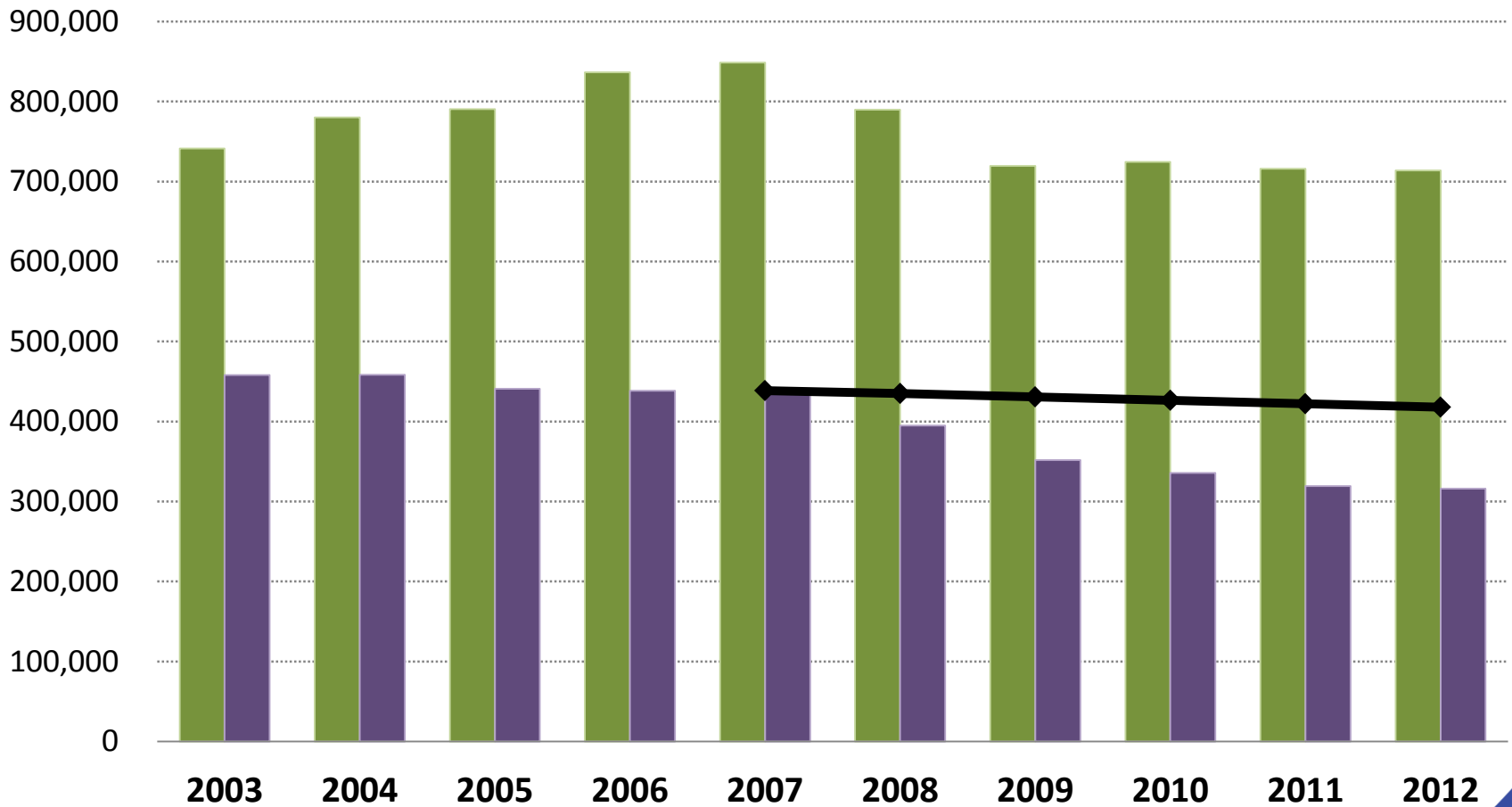


■ Disposed ■ Recycled ▲ Recycle Rate

# Tons Disposed & Recycled by Sector



# Tons Disposed Compared to Goal

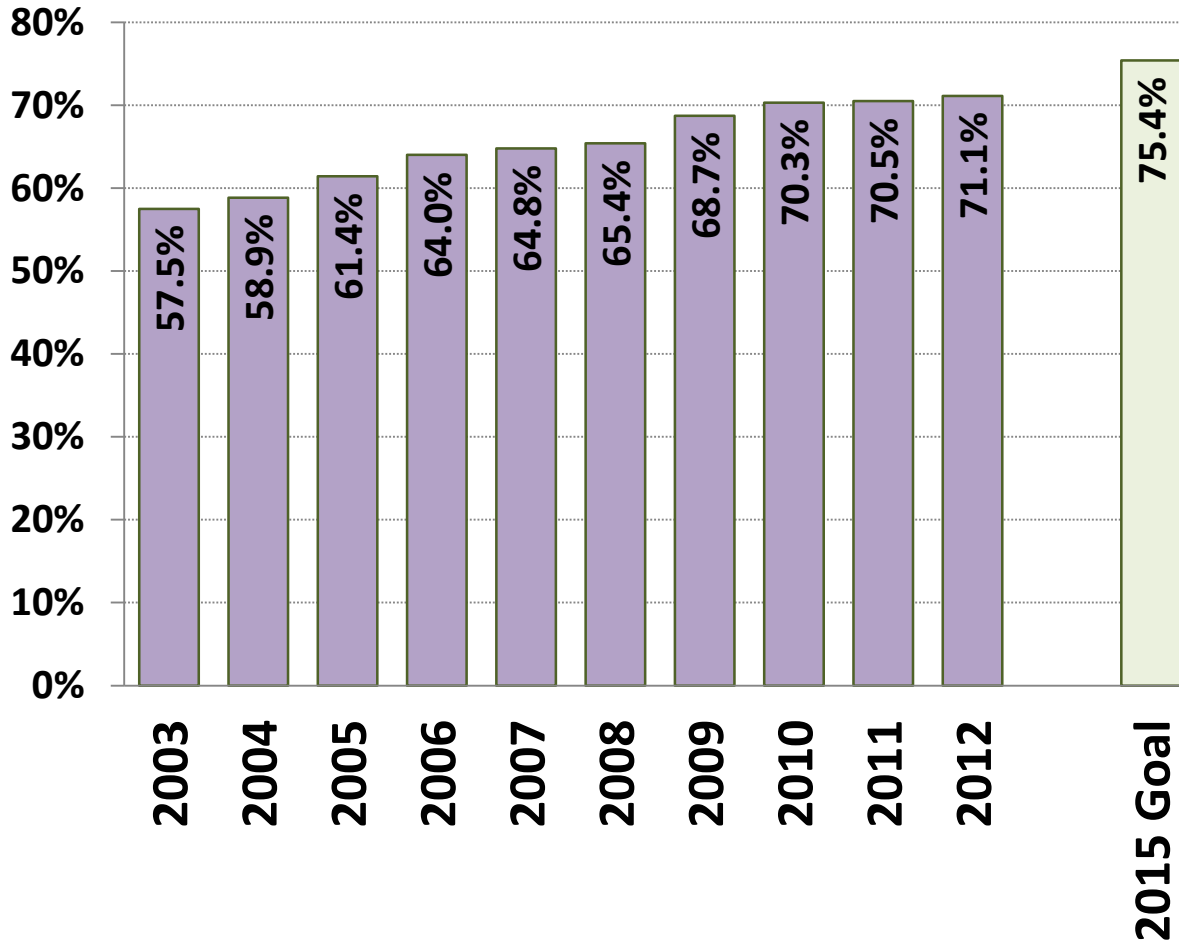


■ Generated ■ Disposed ↔ Max Disposed

# 2012 Highlights

- ❑ Overall recycle rate up 0.3 percentage points to 55.7%.
  - ❑ Seattle's highest rate yet.
  - ❑ 9<sup>th</sup> straight year of growth in overall recycling rate
- ❑ Recycle rate changes by sector
  - ❑ Residential sectors up
  - ❑ Commercial sector same as 2011
  - ❑ Self-haul sector down
- ❑ 5<sup>th</sup> straight year of decline in total number of Municipal Solid Waste (MSW) tons disposed
- ❑ Construction & Demolition (C&D) debris recycle rate down

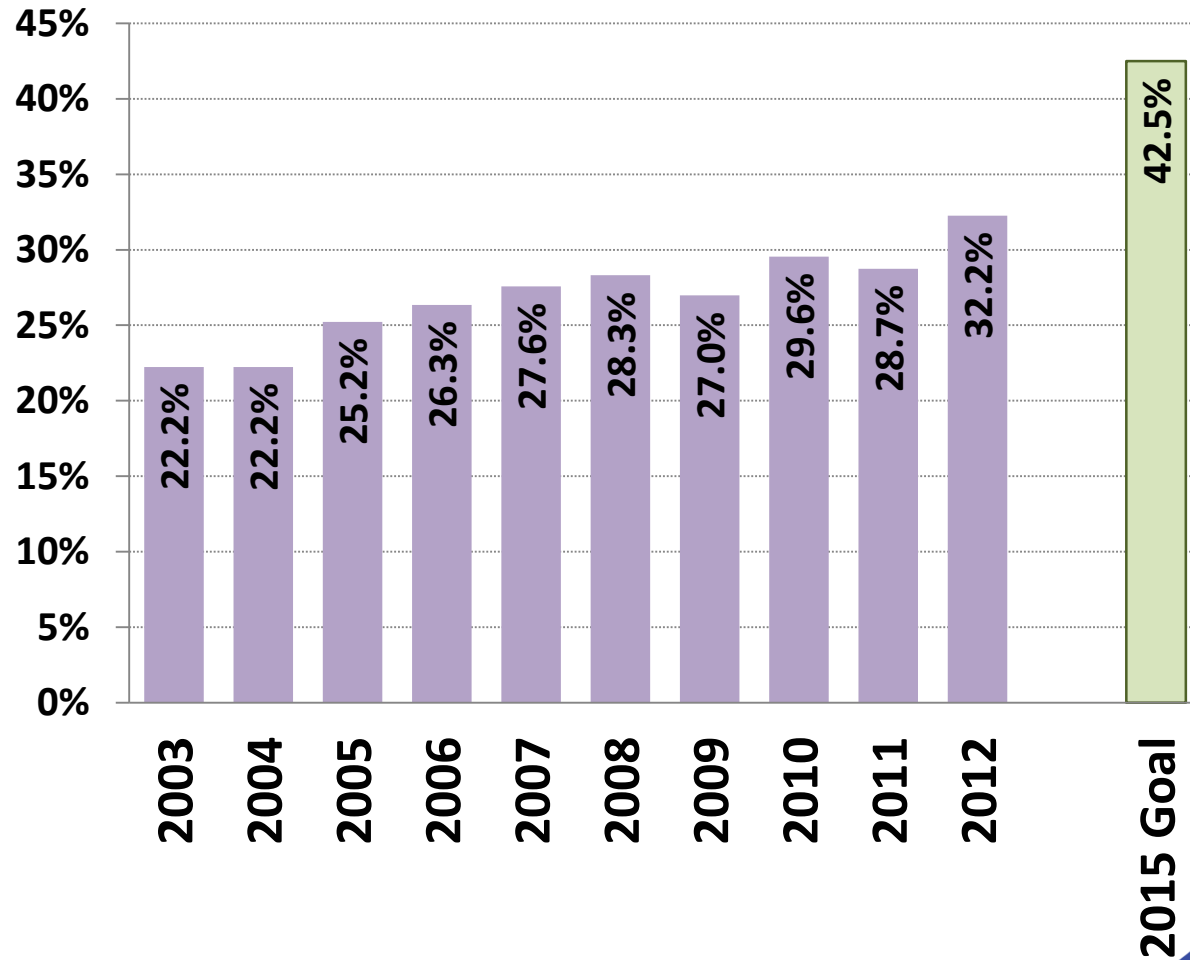
# Single Family Recycle Rate



# Single Family Highlights

- ❑ Recycle rate up 0.6 percentage points to 71.1%
  - ❑ Again surpassed prior gains by reaching highest ever recycling rate
- ❑ Generated tons down slightly from 2011
- ❑ Disposed tons down 2.9%, for 11<sup>th</sup> straight year of decreases
- ❑ Curbside recycled tons up slightly by 42 tons
- ❑ Needs 4.3% recycle rate increase to reach 2015 goal (8,993 tons if 2012)

# Multi Family Recycle Rate

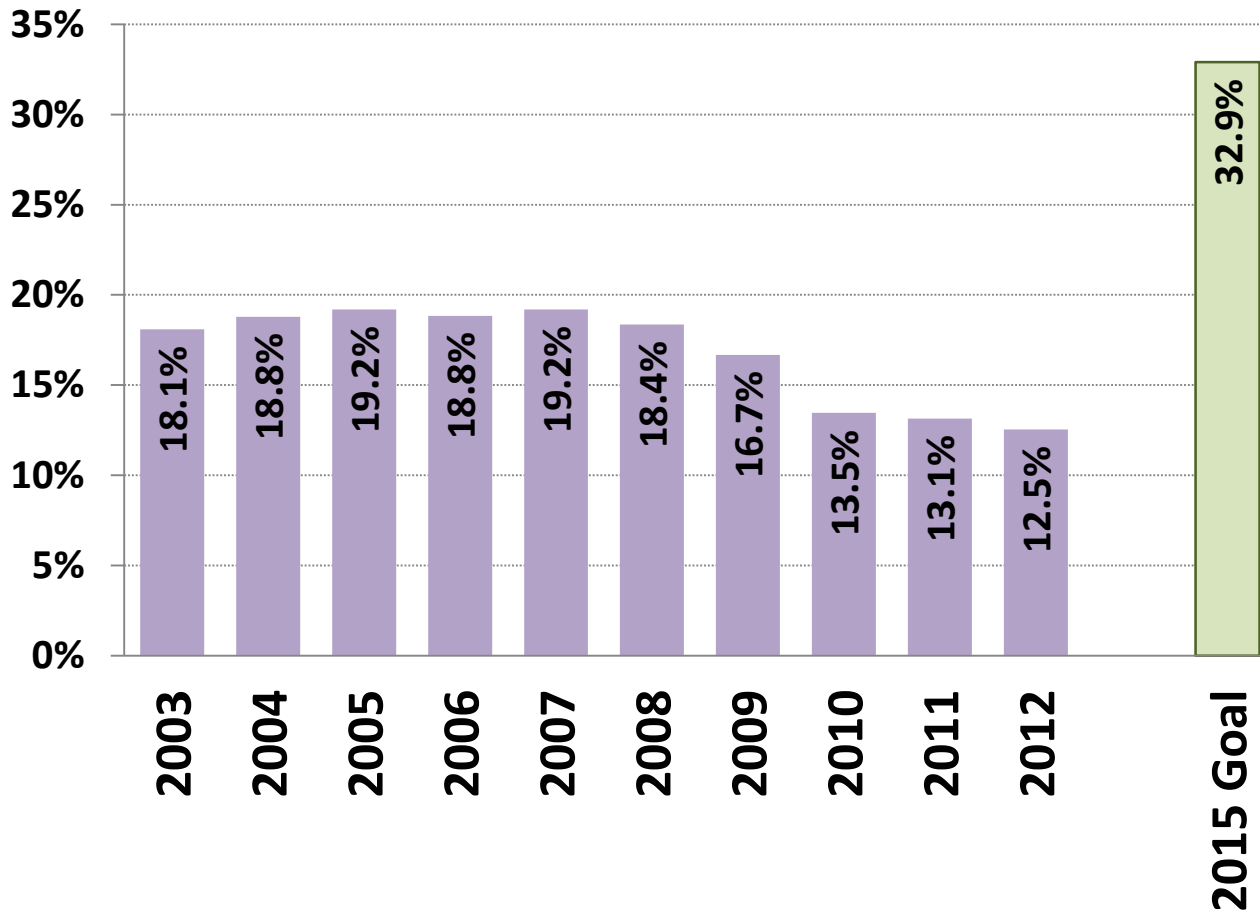




# Multi Family Highlights

- ❑ Recycle rate up 2.6 percentage points to 32.2%
  - ❑ Highest ever recycle rate
  - ❑ Reversed 2011 drop
- ❑ Total generation up 6.3%
  - ❑ Disposed tons up 1%
  - ❑ Recycled tons up 19.3%
- ❑ Food waste service requirement expanded to all apartments as of September 2011. Full roll-out completed January 2012
- ❑ Needs 10.3% recycle rate increase to reach 2015 goal (7,641 tons if 2012)

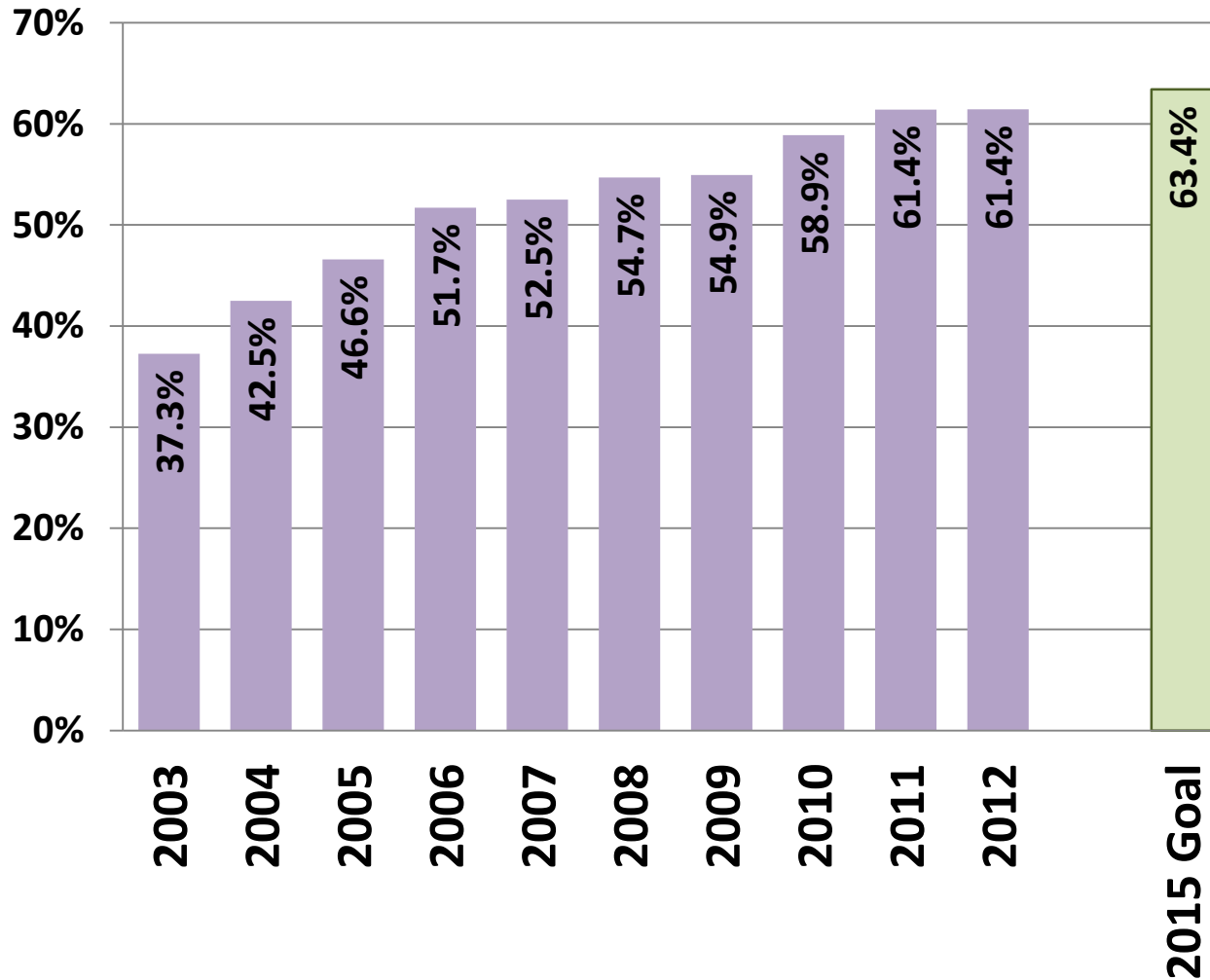
# Self Haul Recycle Rate



# Self Haul Highlights

- ❑ Recycle rate down 0.6 percentage points to 12.5%
  - ❑ Continues trend of annual decreases since 2007
- ❑ Total generation down 1.5%
  - ❑ Disposed tons down 0.8%
  - ❑ Recycled tons down 6.0%
- ❑ Trips down 3.2% (7,196 fewer), continuing trend
- ❑ Yard waste down 53.7% since 2007
- ❑ Most of drop-off recycling is metals--mostly appliances. Decrease likely due to economy
- ❑ Needs 20.4% recycle rate increase to reach 2015 goal (16,433 tons if 2012)

# Commercial Recycle Rate

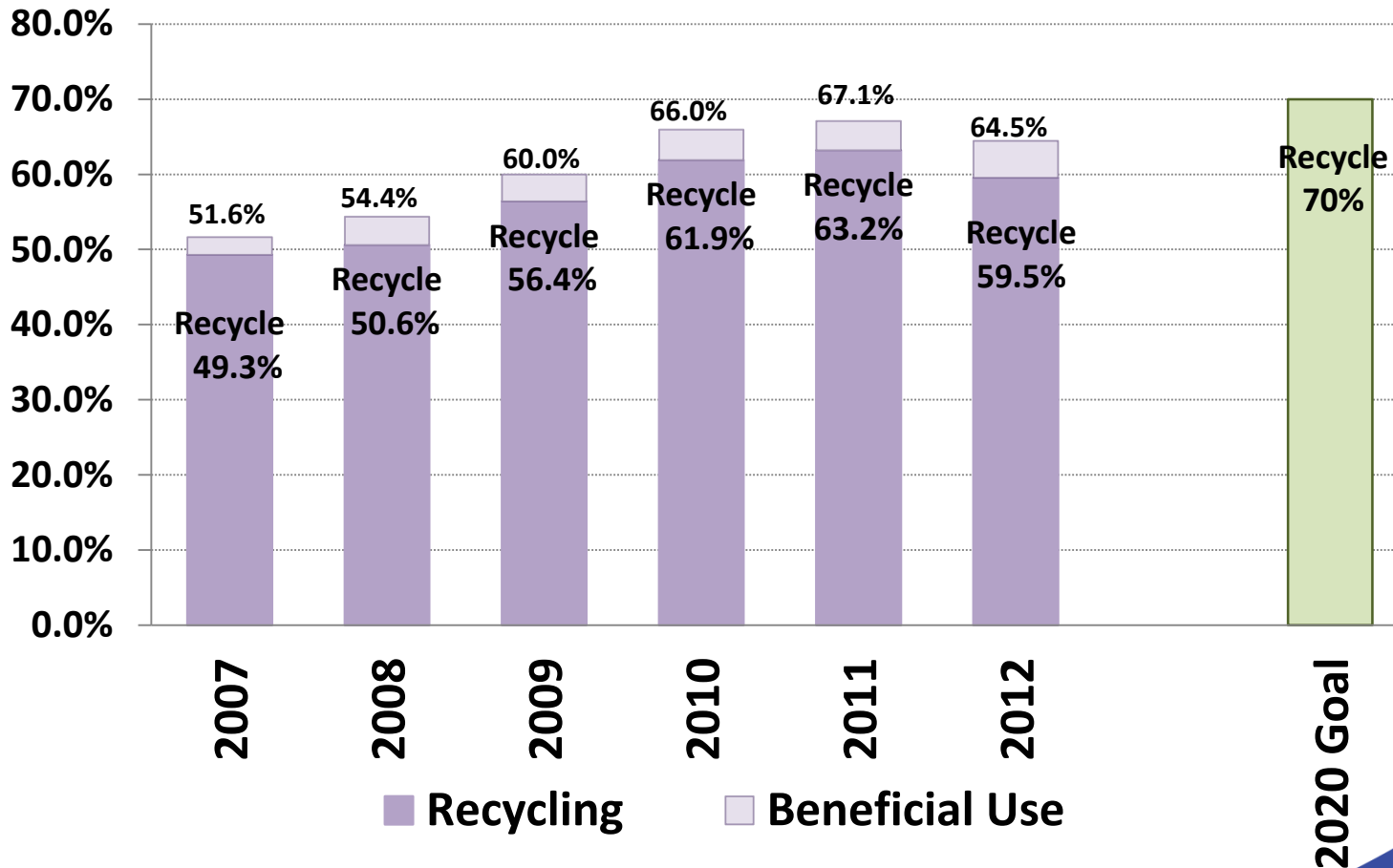


# Commercial Highlights

- ❑ Recycle rate held at highest ever 61.4% for 2<sup>nd</sup> year in a row
- ❑ Total generation down 1.0%, reversing 2011 increase
  - ❑ Disposed tons down 1.1%
  - ❑ Recycled tons down 1.0%
- ❑ Needs 2.0% recycle rate increase to reach 2015 goal (6,841 tons if 2012)

# Construction & Demolition Recycling & Beneficial Use Rates

*Recycle + Beneficial Use = Total Diversion*



# Construction & Demolition Highlights

- ❑ Not included in overall MSW recycling rate
- ❑ Recycle rate down 3.7 percentage points to 59.5%
- ❑ Total tons generated up 4.7%
  - ❑ Disposed tons up 9.4%
  - ❑ Recycled tons down 1.3%
- ❑ Disposal ban on asphalt paving, bricks, and concrete started in 2012 with education
- ❑ Timely report data still challenging

# Near-Term Steps to Increase Recycling

## Residential

- Foodwaste composting – redirected funds to increase advertising
- Multi-family existing ban on disposing recycling – increased enforcement

## Self-Haul

- Recover material from new flat floor – program development staff assigned to South Transfer Station to work with Operations to identify opportunities
  - C&D
  - Cardboard
  - Yard waste



# Near-Term Steps to Increase Recycling, *continued*

## ❑ Commercial

- ❑ Foodwaste composting – increased Resource Venture outreach
- ❑ Existing ban on disposing cardboard and paper – increased enforcement
- ❑ Expand list of banned materials – CM Godden’s proposal

# Mid to Long-term Options to Increase Recycling

- ❑ See *Seattle's Solid Waste Plan*

Presentation prepared by Vicky Beaumont, Seattle Public Utilities

[Vicky.beaumont@seattle.gov](mailto:Vicky.beaumont@seattle.gov)

206-233-7856