

#1
C.F. 311874

FRED HUTCHINSON
CANCER RESEARCH CENTER

A LIFE OF SCIENCE

October 28, 2011

Seattle City Council
c/o Monica Martinez Simmons, City Clerk
600 – 4th Avenue, Floor 3
Seattle, WA 98124-4728

RE: FRED HUTCHINSON CANCER RESEARCH CENTER
1100 EASTLAKE SKYBRIDGE PETITION
SMC CHAPTER 15.64

Honorable Members of the Seattle City Council:

As you are aware, Fred Hutchinson Cancer Research Center (the "Center") is a world-renowned research facility with its main campus in South Lake Union. The Center acquired the 1100 Eastlake Building in December 2011 and is in the process of transforming it into laboratory facilities for its Vaccine and Infectious Diseases Division.

The Center has worked hard over many years to generate a creative and collaborative environment for research and to provide corresponding facilities that further that endeavor. A central tenet of our research process is the ability to readily interact with fellow researchers, share ideas, learn about other successes and failures, and provide a stimulating and safe environment for our staff. We have found that an important part of this process is to provide many points of interaction throughout the campus. This is apparent from the many pathways and skybridges that currently connect the campus buildings.

To foster the desired level of interaction and to provide consistency with the existing connections between other buildings, the Center originally hoped to establish three connections between 1100 Eastlake and its campus: a crosswalk, a tunnel and a skybridge. With regard to the crosswalk, Eastlake Avenue E separates 1100 Eastlake from the main campus. After review, SDOT determined that an unsignalized crosswalk would not be safe given the high vehicle speeds and limited sight lines around the building. In addition, a subsequent Pedestrian Crossing Analysis by Heffron Transportation found that a traffic signal is not warranted at this location. A copy of SDOT's determination is at Tab 7. A copy of Heffron's crossing analysis is in Appendix B of the SEPA Checklist at Tab 5.

As for the tunnel, we are currently seeking approval of a service tunnel to connect 1100 Eastlake to the mechanical level in the Weintraub Building directly across the street. The primary use for this connection is to transport waste, dirty glassware and laundry, etc. from 1100 Eastlake to the shared services below grade in the Weintraub Building. As will be discussed in this package, mixing both service and research activities inside the tunnel would provide neither a safe nor practicable connection for researchers.

As the enclosed materials show, we have designed the structure to be transparent and unobtrusive, yet also consistent with the Center's widely praised architectural design themes.. In addition, given the location below I-5, there will be no impairment of views.

At Tab 8, we present our thoughts on public benefits that could be provided in connection with this application.

We urge you to review the enclosed materials closely, and to approve our petition for this skybridge. Approval of this structure will enhance the interactive, collaborative environment that is key to the success of the Center's mission to prevent, diagnose and treat cancer. The Center thanks you for your consideration of this application.

Sincerely,

FRED HUTCHINSON CANCER RESEARCH CENTER

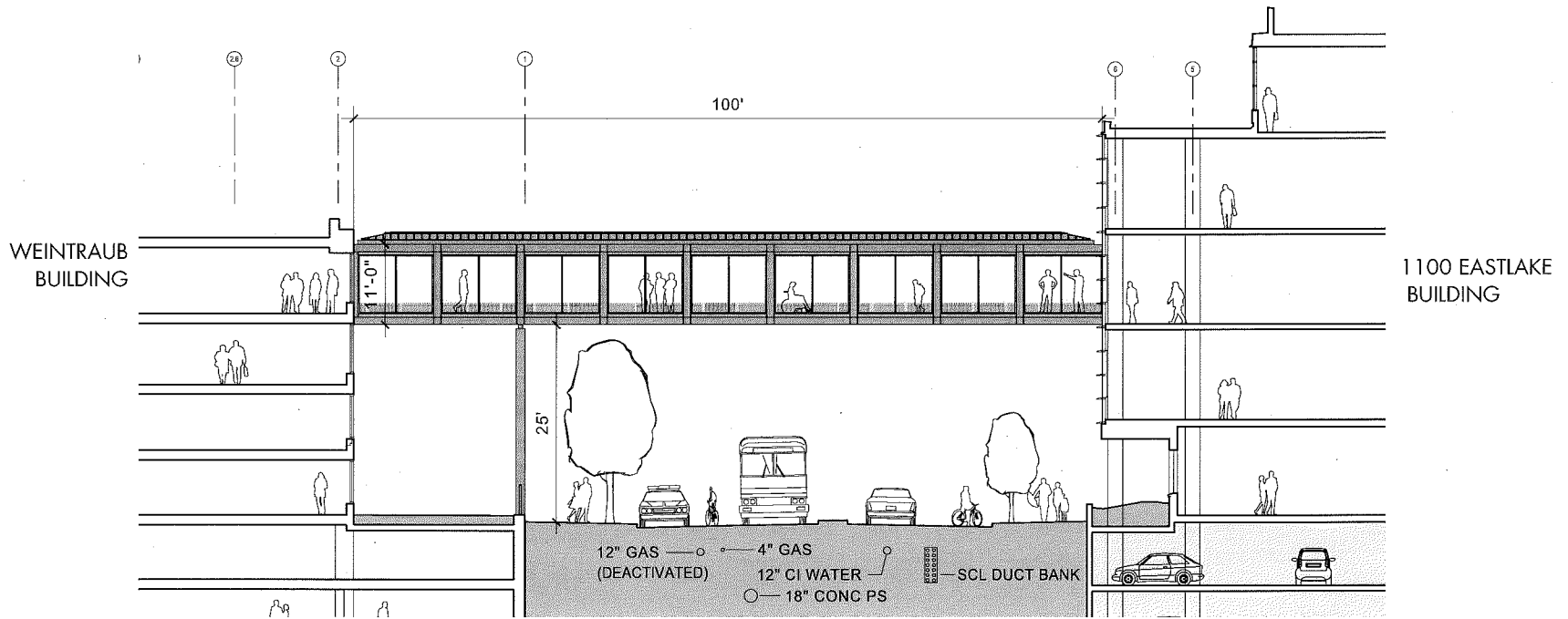
A handwritten signature in dark ink, appearing to read "Scott Rusch", followed by a horizontal line.

Scott Rusch
Vice President, Facilities and Operations

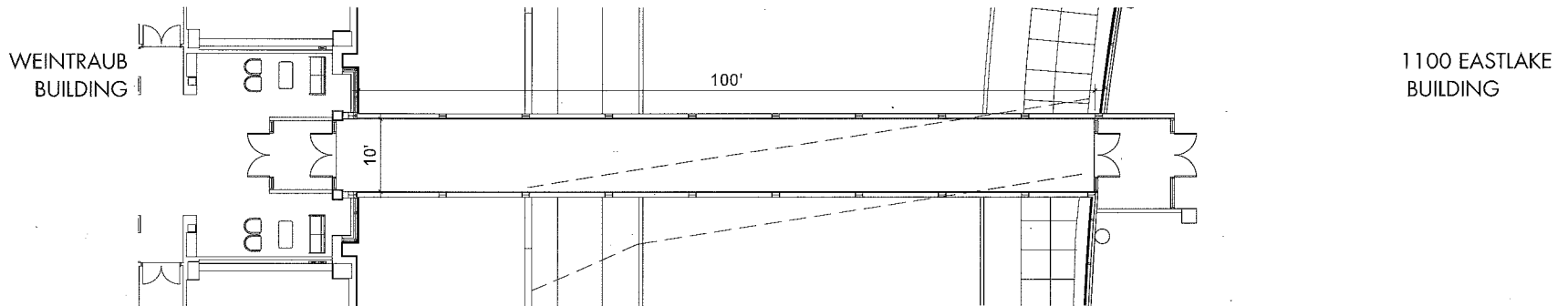
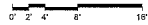
Enclosure: Skybridge Petition Package

TAB TABLE OF CONTENTS

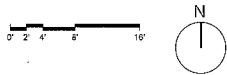
1	Conceptual Drawings of Skybridge
2	Conceptual Drawings of Alternatives to Skybridge
3	Drawings of Skybridge Showing Visual Appearance
4	Photographs of the Location and Immediate Surrounding Area
5	Environmental Checklist
6	Statement of Necessity
7	Additional Information
	a. SDOT Memo dated August 12, 2011 re: Crosswalk
8	Proposed Public Benefit
	a. Streetscape
	b. Lighting
	c. Wayfinding
9	Response to Director's Rule 23-2006
10	Response to SMC 15.64.050 (B) Criteria



SKYBRIDGE ELEVATION FACING NORTH

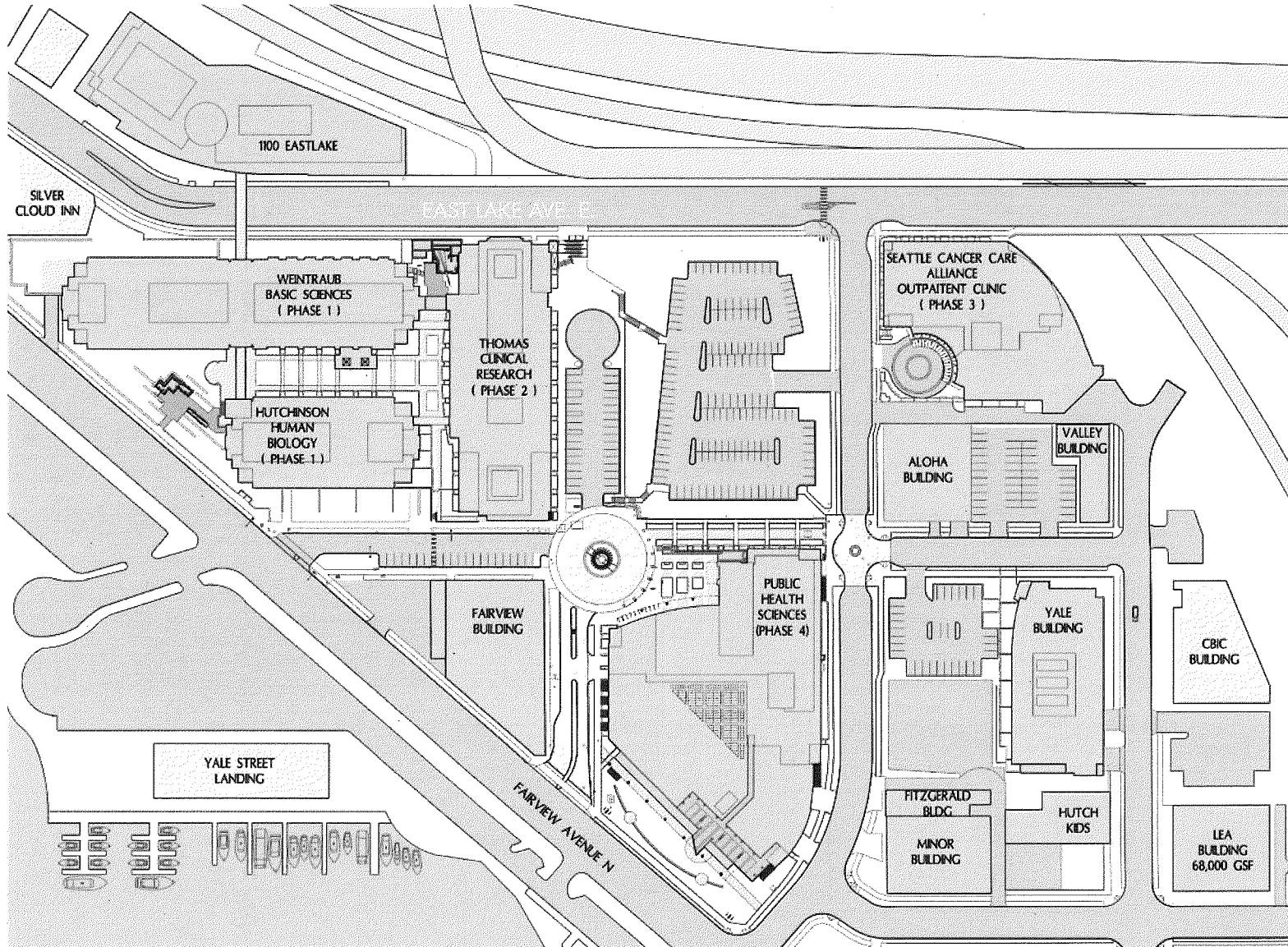


SKYBRIDGE PLAN



FHCRC

SKYBRIDGE SECTION AND PLAN



CAMPUS PLAN - 2011





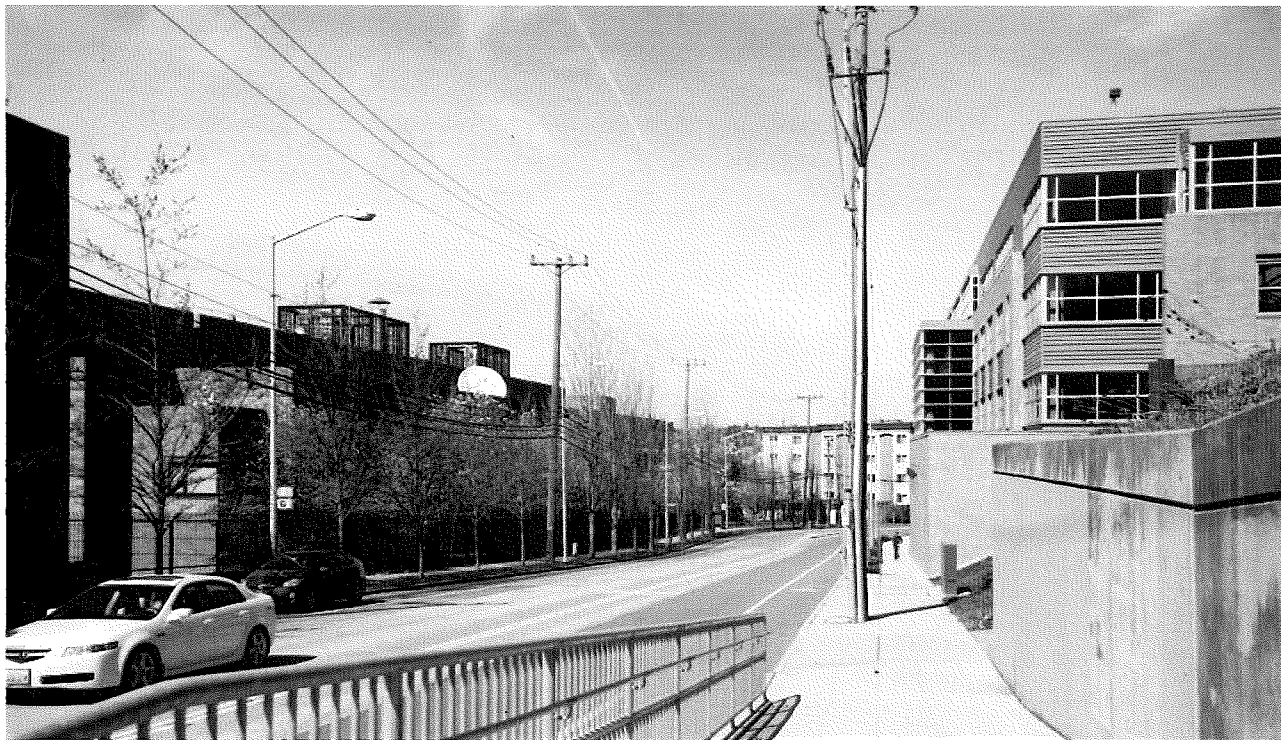
EXISTING CONDITION - VIEW LOOKING SOUTH



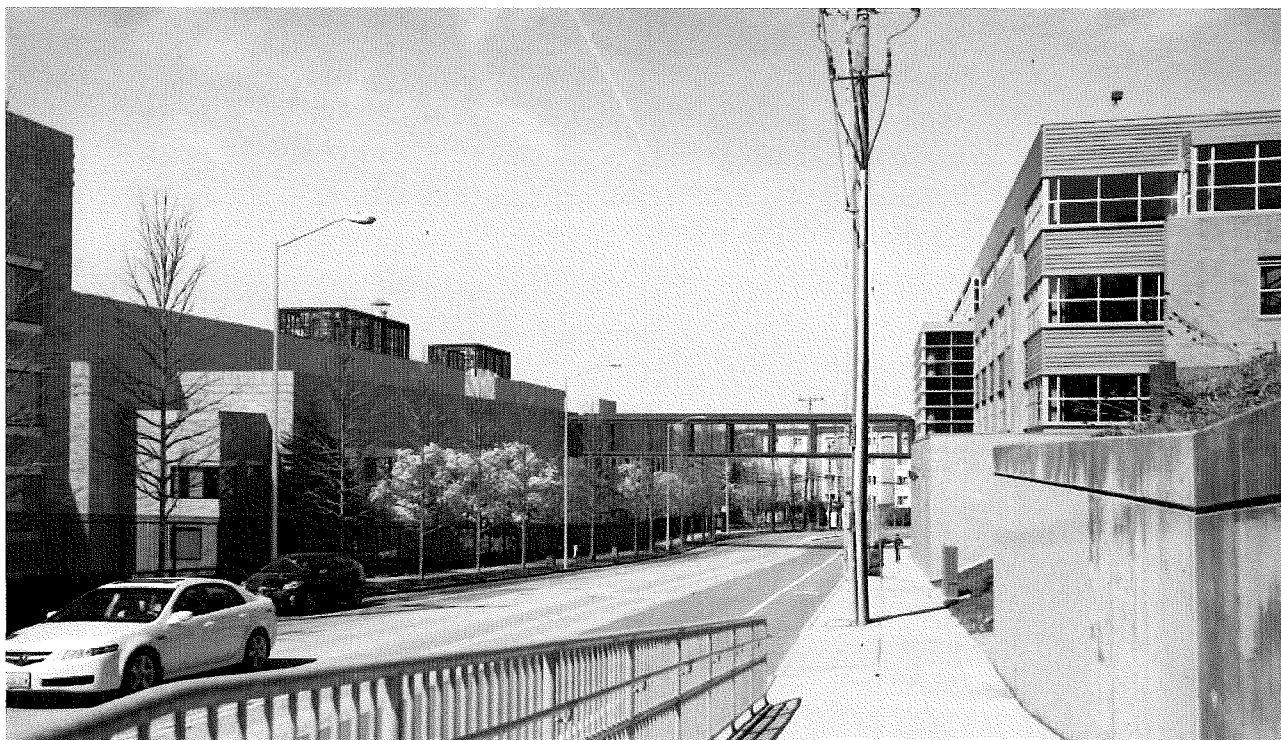
PROPOSED CONCEPT - SKYBRIDGE, VIEW LOOKING SOUTH

VISUALIZATION

SKYBRIDGE



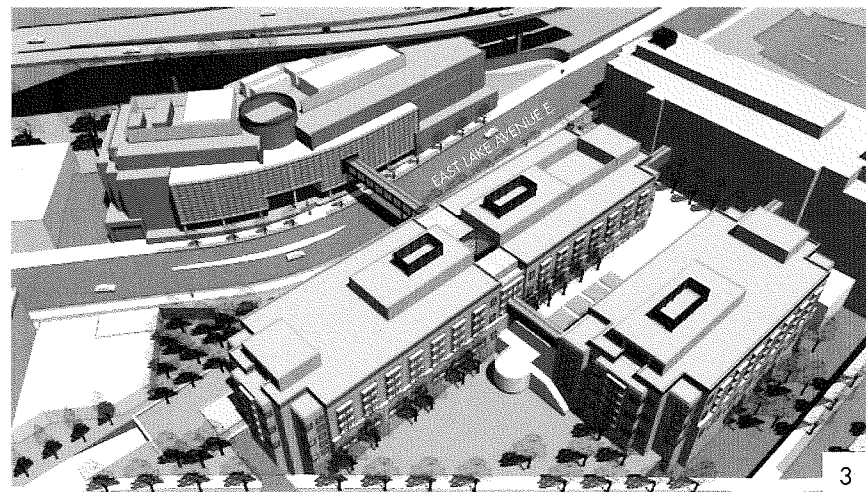
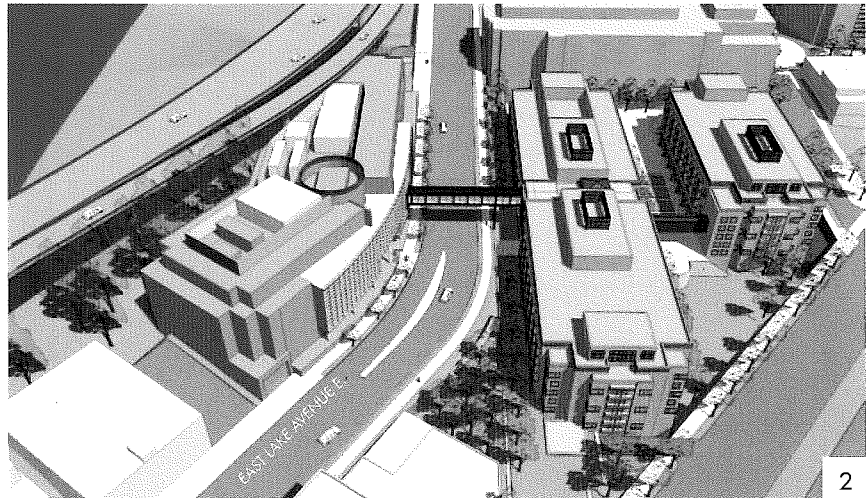
EXISTING CONDITION - VIEW LOOKING NORTH



PROPOSED CONCEPT - SKYBRIDGE, VIEW LOOKING NORTH

VISUALIZATION

SKYBRIDGE

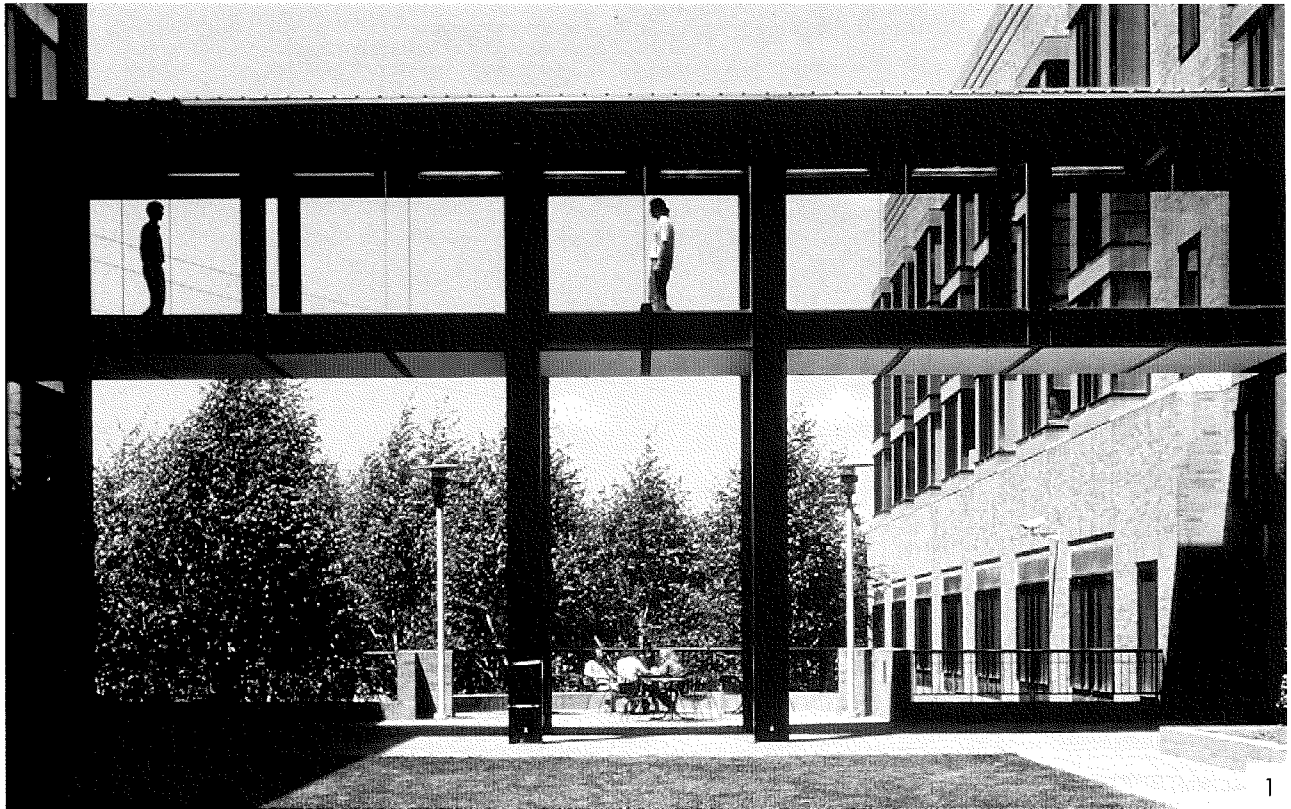


Images

1. Looking North along East Lake Avenue E.

2. Looking South along East Lake Avenue E.

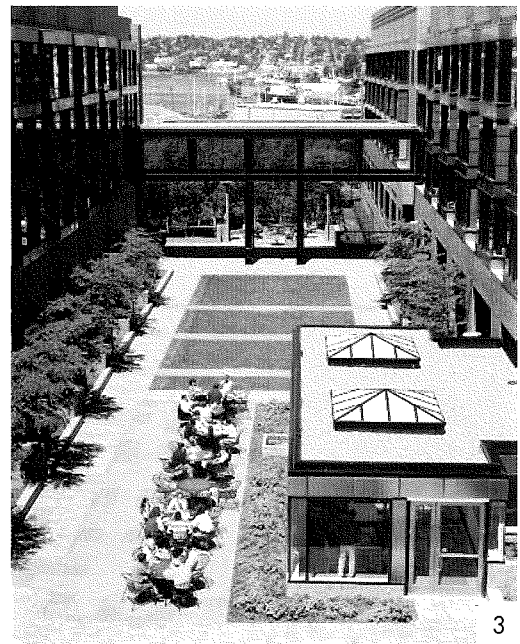
3. Looking East along East Lake Avenue E.



1



2



3

Images:

1. FHCRC phase I existing skybridge
2. FHCRC phase I existing courtyard
3. FHCRC phase I existing courtyard

EXISTING SKYBRIDGES

FHCRC CAMPUS