



First Hill Streetcar Project Update

Seattle City Council Transportation  
Committee

December 13, 2011

SEATTLE STREETCAR

# Briefing Overview

- Streetcar Network Overview & Status
- First Hill Streetcar Final Design Highlights
- FH Streetcar Vehicle Contract Status
- FH Streetcar Construction Contract Status
- FH Streetcar Total Development Cost
- Contingencies & Risks

# Seattle Center City Streetcar Vision

(2008 Streetcar Network Plan, Resolution 31091 )

- South Lake Union Line  
(Completed 2007)
- First Hill Line  
(2012 Groundbreaking)
- Center City Connections  
(Alternatives Analysis beginning 2012)

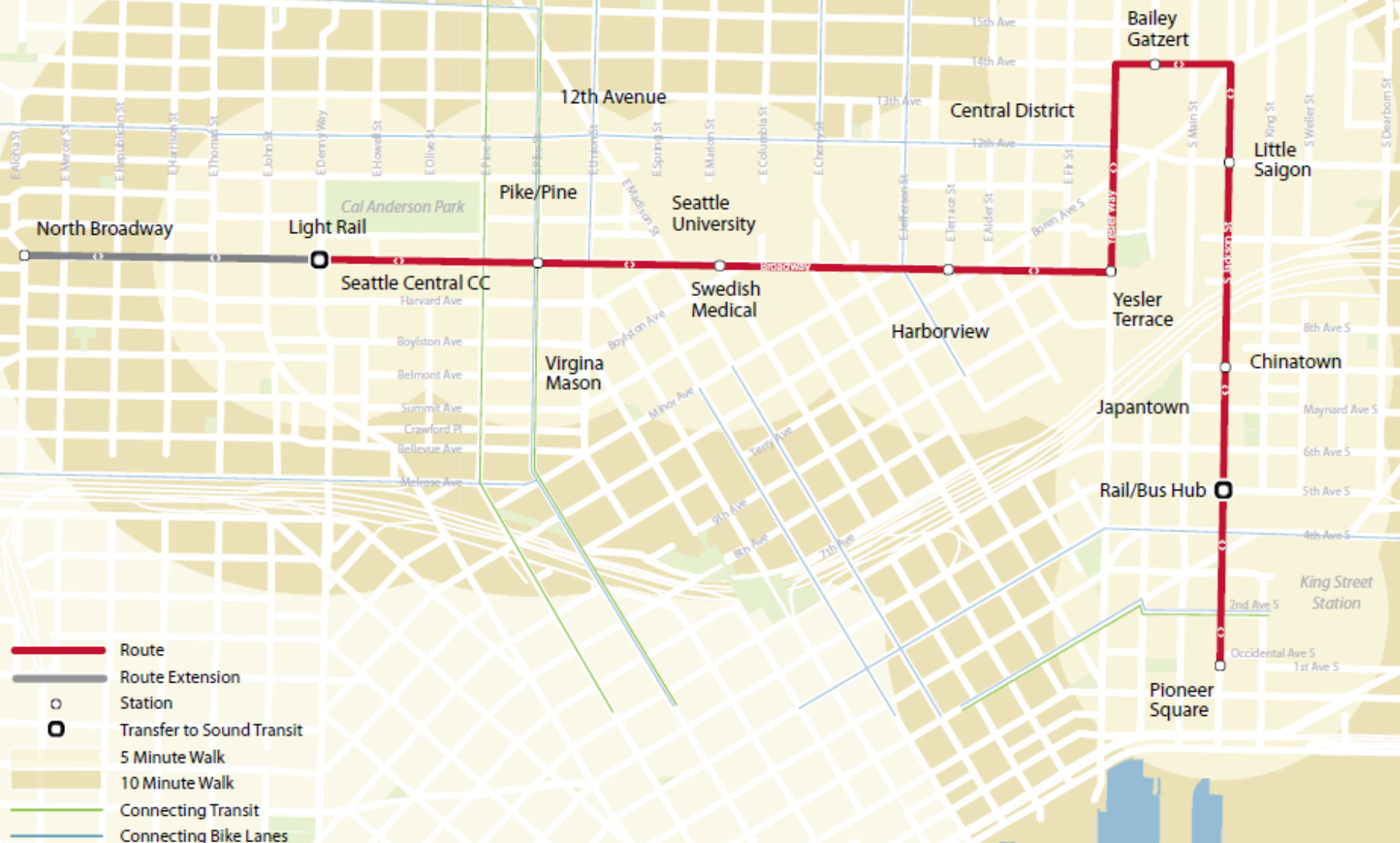


## South Lake Union Line

- December 2007:  
Streetcar Service Begins
- July 2009 Average  
Weekday Ridership: 1,900
- July 2011 Average  
Weekday Ridership: 3000



# SEATTLE STREETCAR



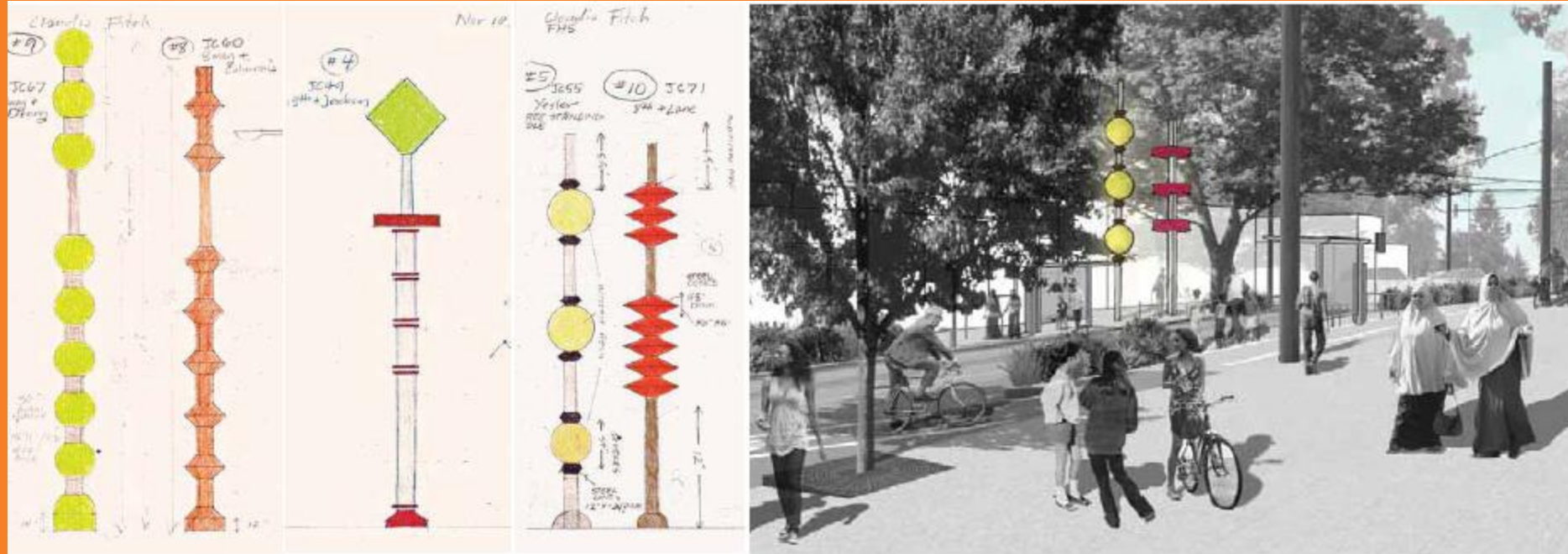
## **First Hill Streetcar-Unique Project Features**

- Streetcar Plazas
- Public Art
- Two-Way Separated Bikeway
- Wireless (Battery-Drive) Streetcar Capability

Broadway / Marion Perspective



## Public Art—Claudia Fitch, Artist



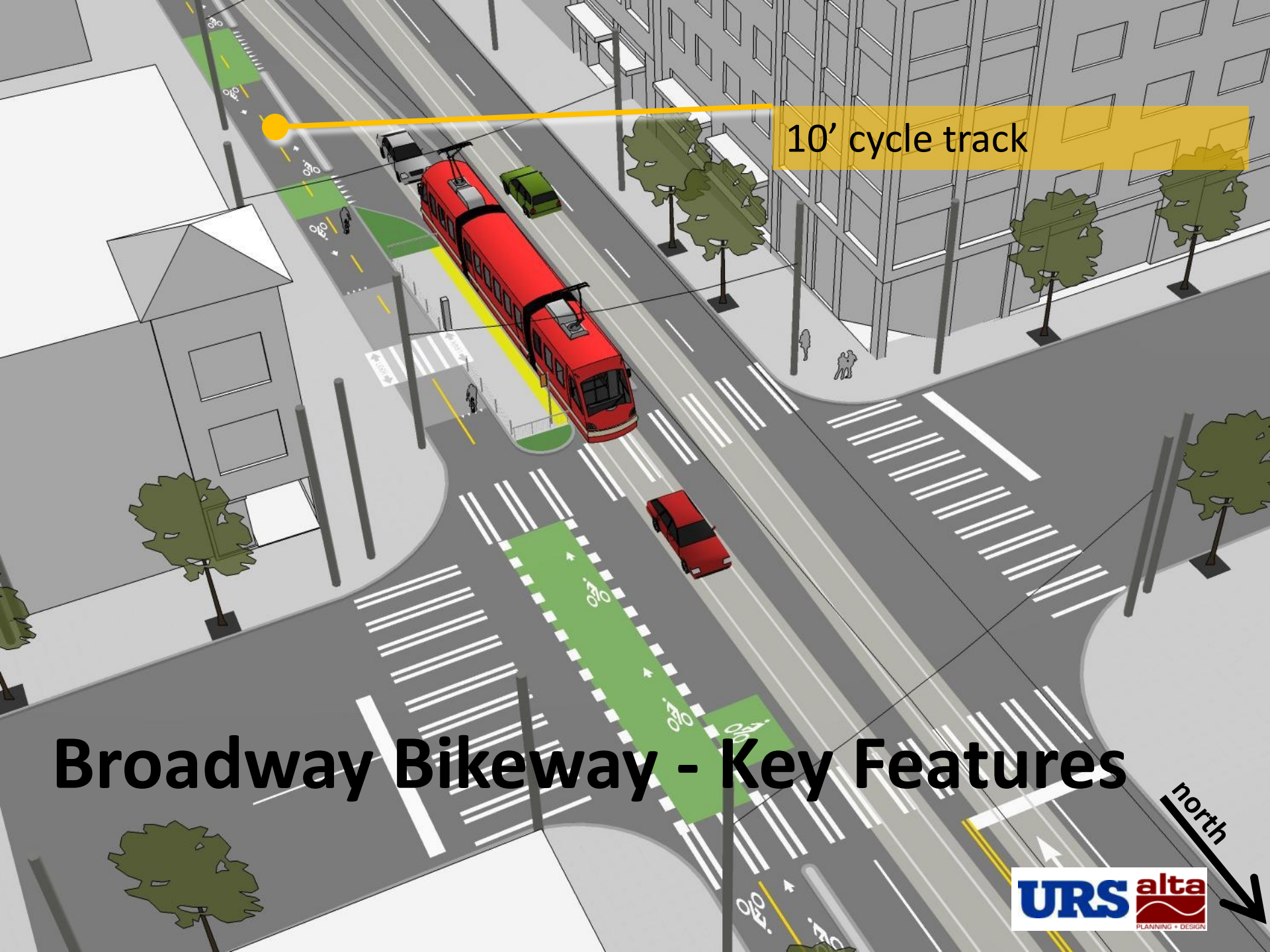


Broadway / Pine Perspective



Streetcar Plaza and Broadway Bikeway (view at Swedish/Seattle University)



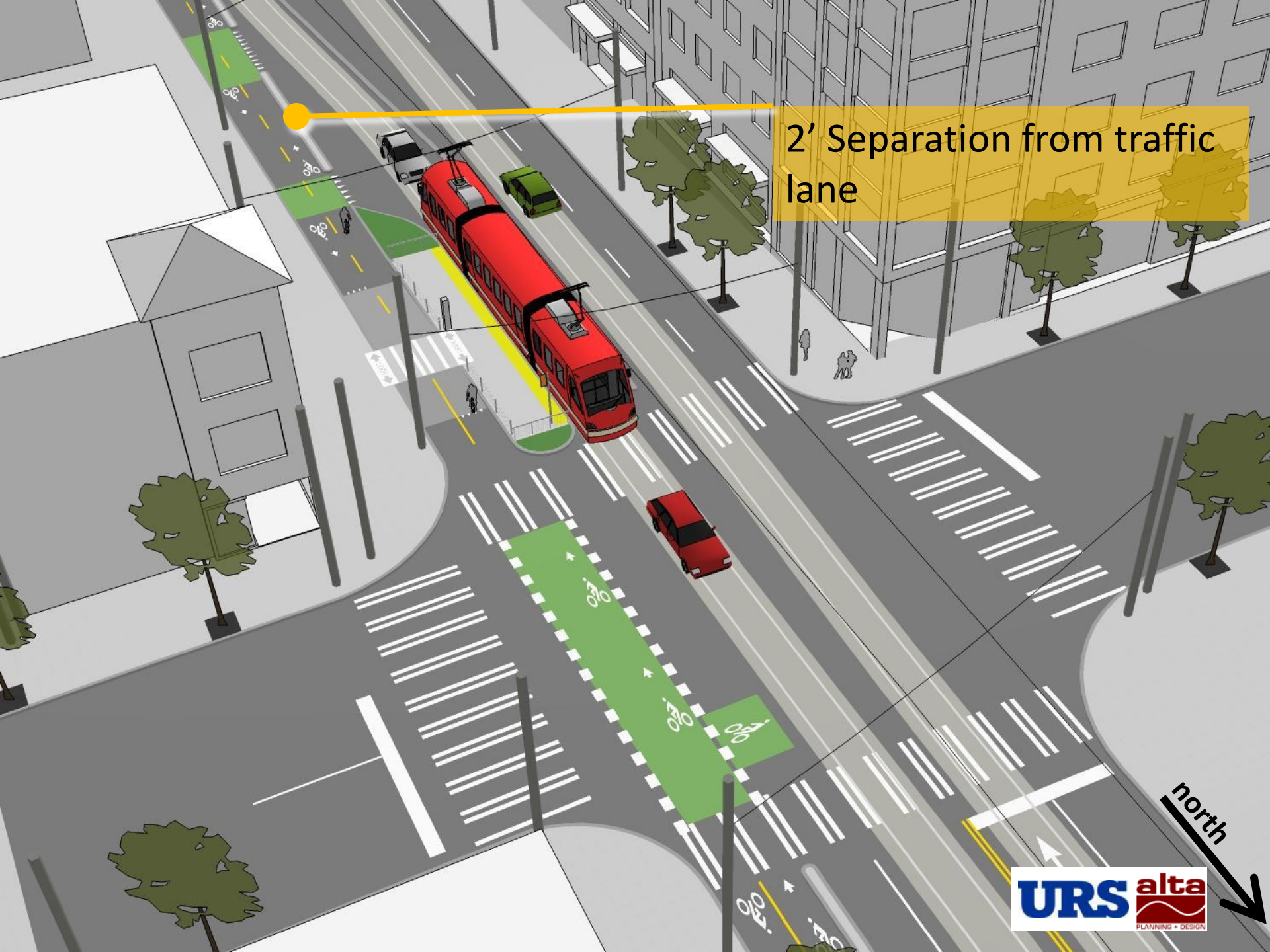


10' cycle track

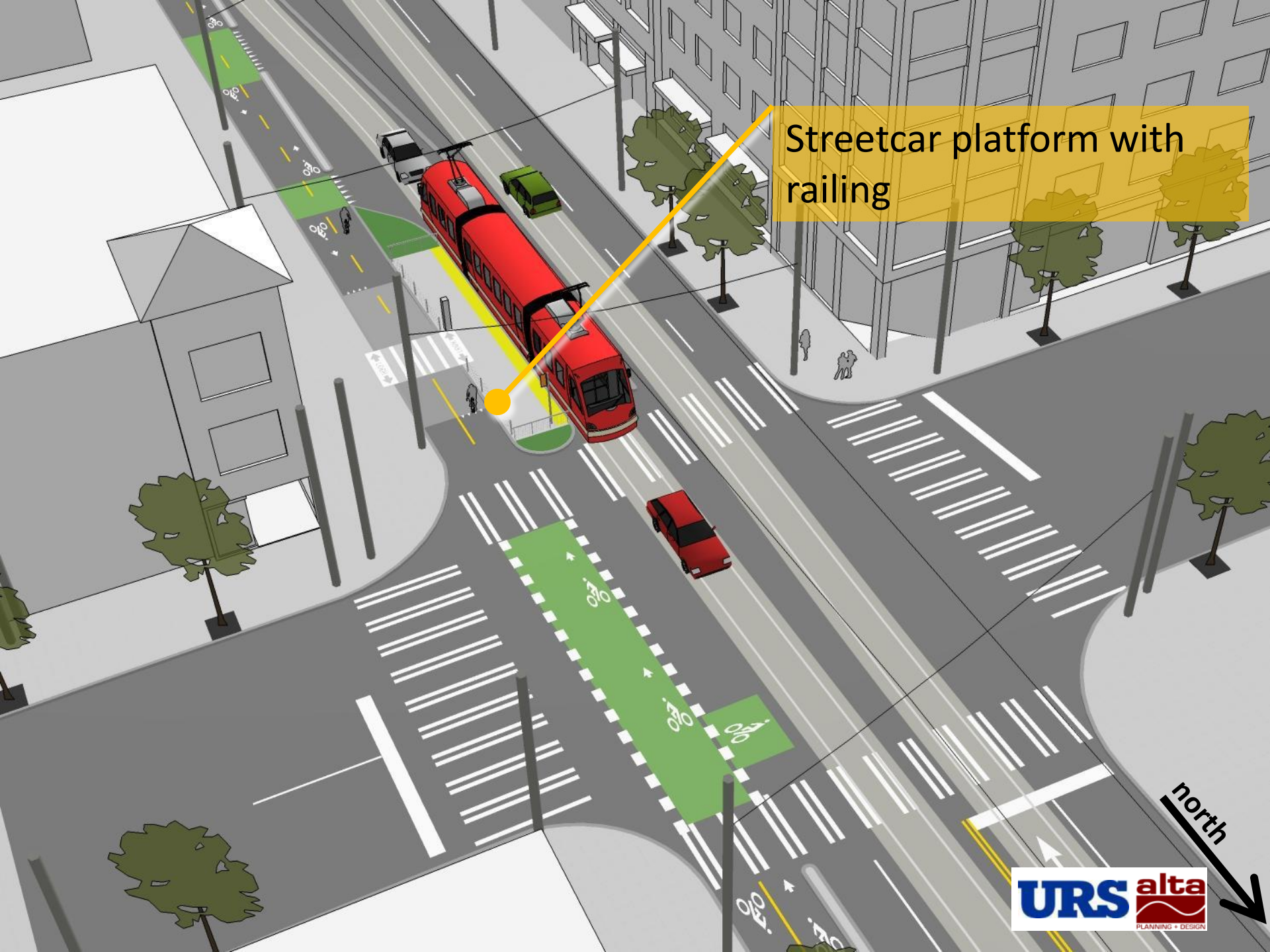
# Broadway Bikeway - Key Features



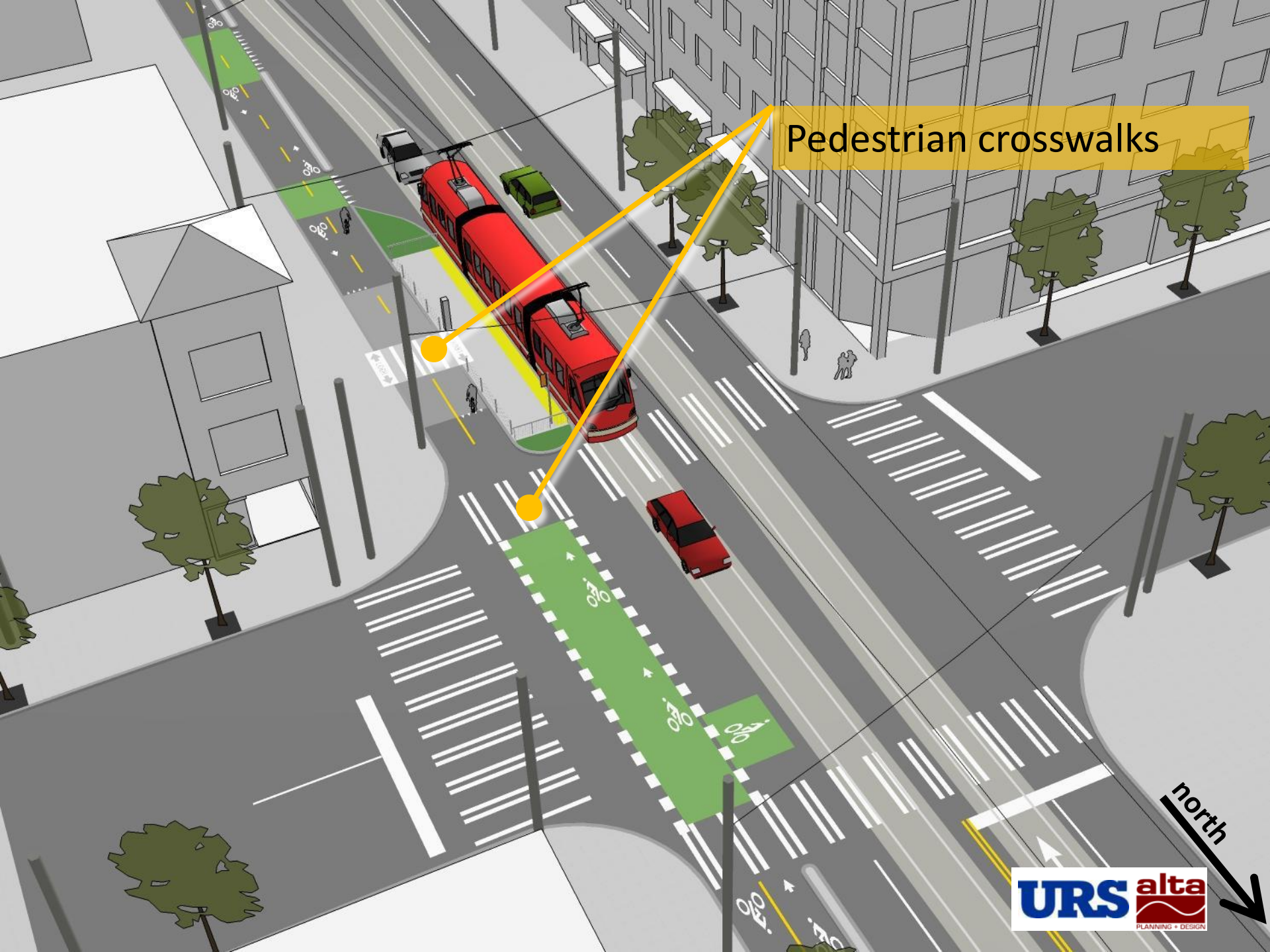
2' Separation from traffic lane



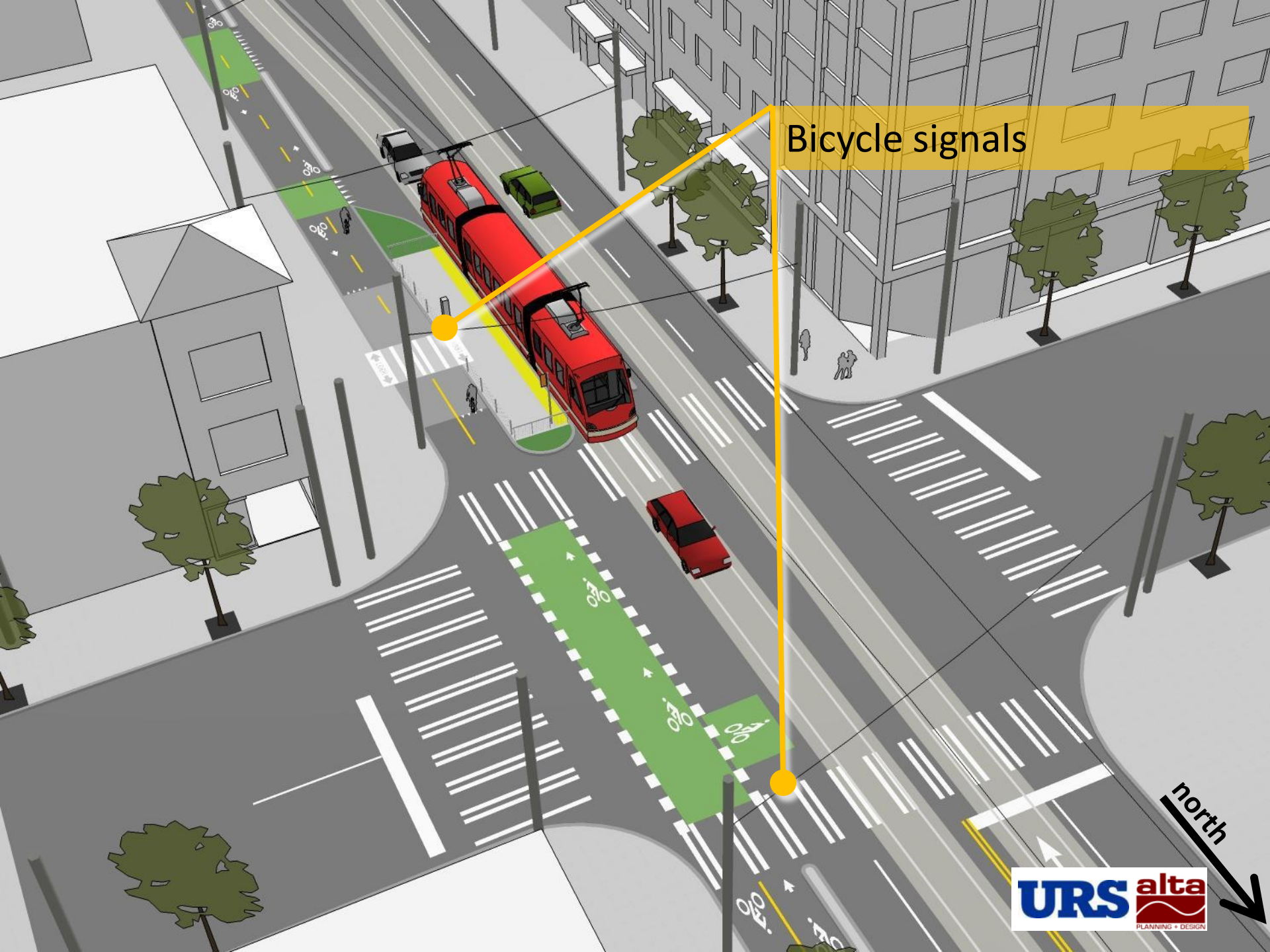
Streetcar platform with railing



Pedestrian crosswalks



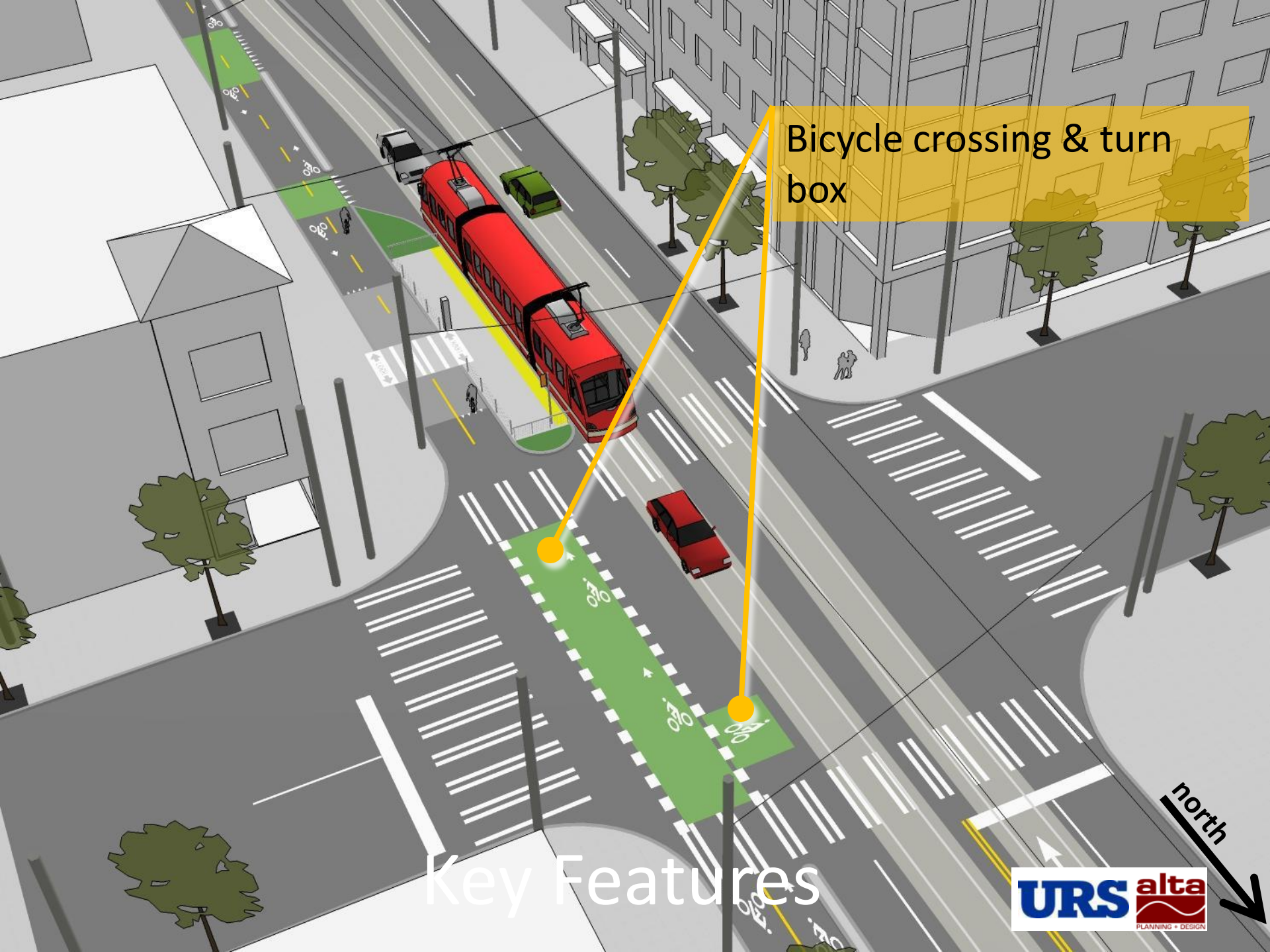
Bicycle signals



north

Bicycle crossing & turn box

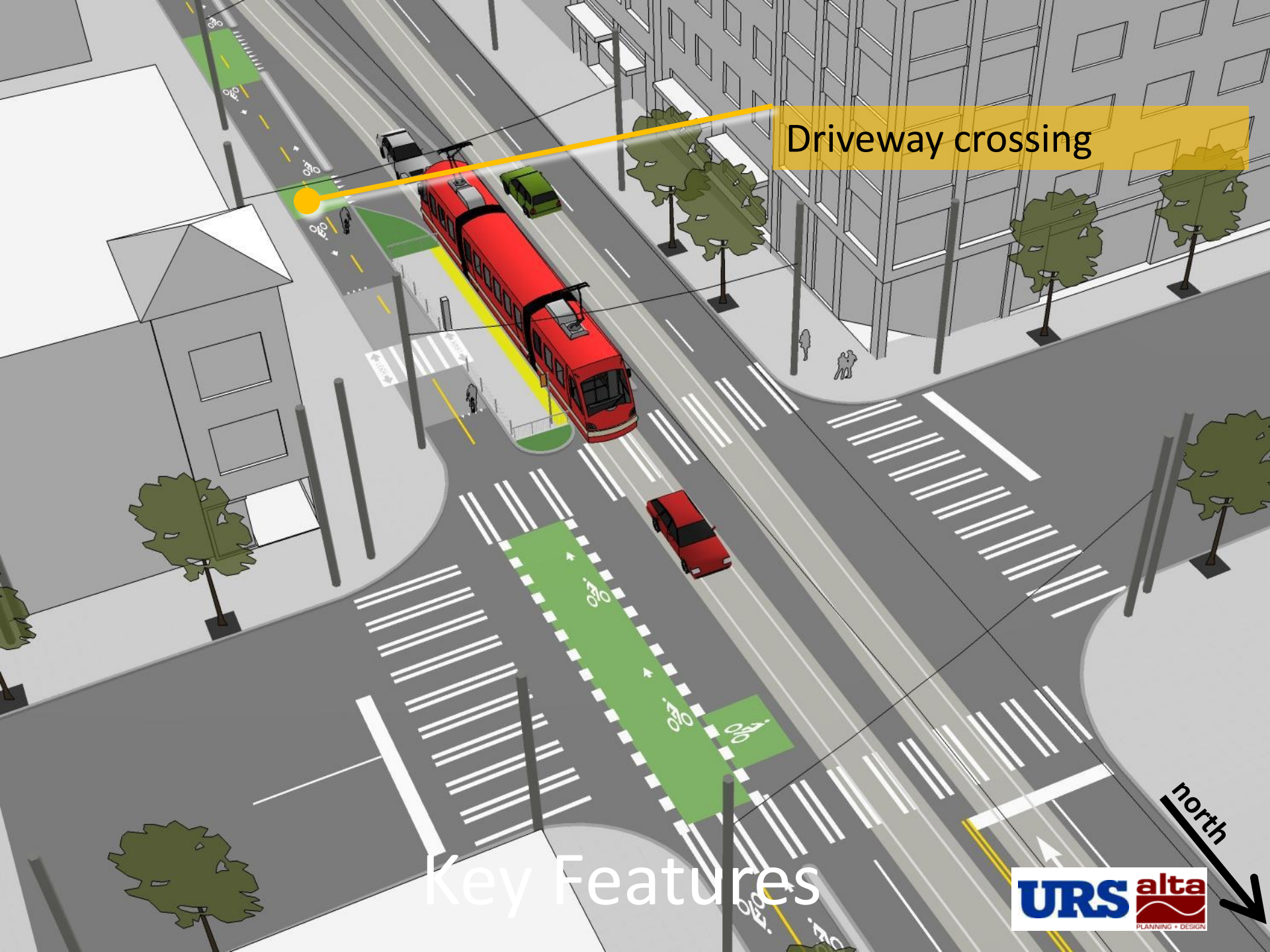
Key Features





Driveway crossing

# Key Features

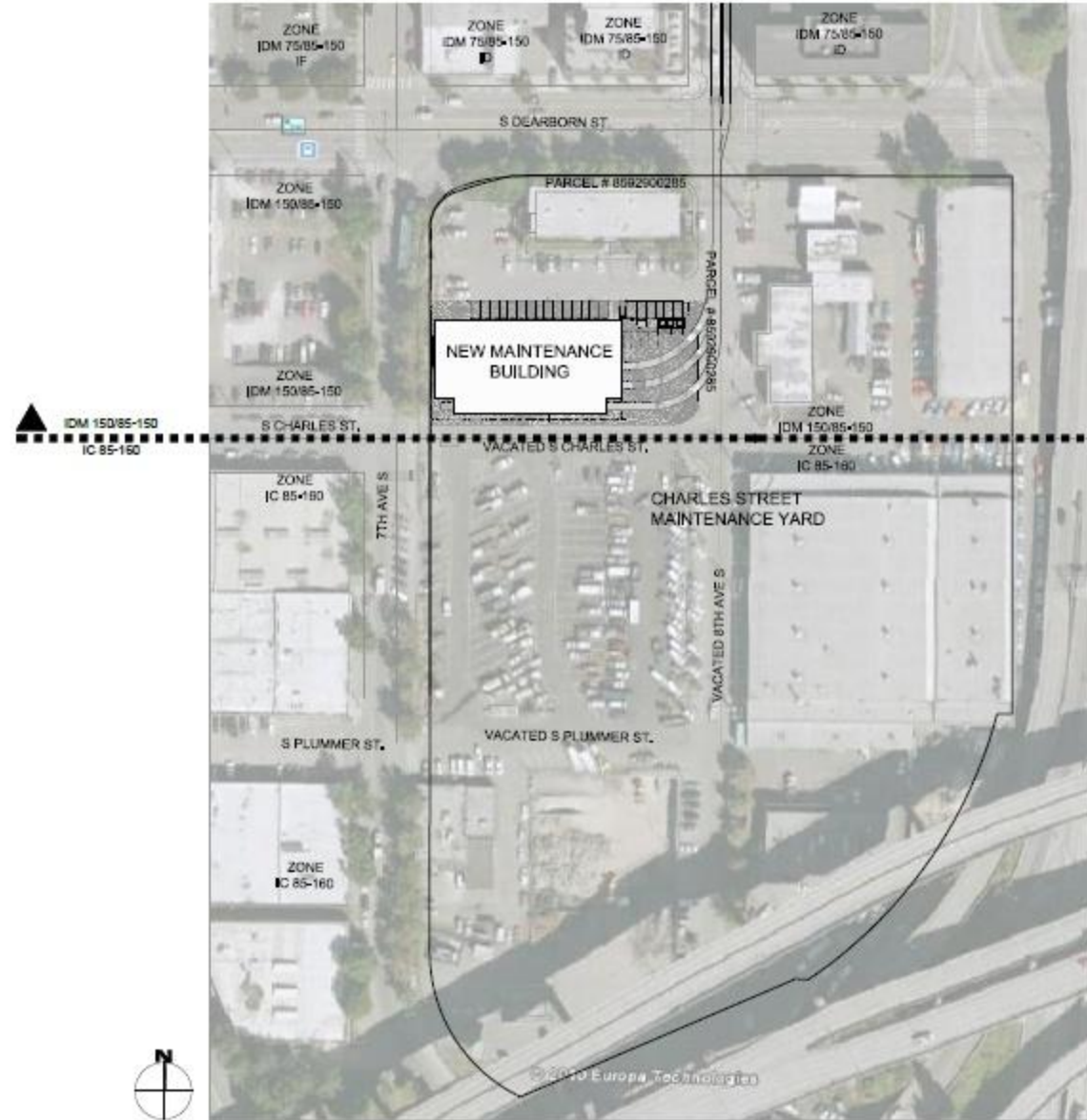


## Maintenance Facility

- Located at City's Charles Street Service Center

- Access Via Single Center Track on 8<sup>th</sup> Ave S

- Similar to South Lake Union Facility & Track on Harrison Street



# MAINTENANCE FACILITY

View looking Northeast at 7<sup>th</sup> Ave S/Charles Street



# MAINTENANCE FACILITY

View looking North on 8<sup>th</sup> Ave S



# Streetcar Vehicle Contract

- RFP Process—Three Bidders
- Best Value Bidder: Inekon-Pacifica
- 6 Streetcars, Approx. \$27 M
- Local Assembly in Seattle by Pacifica
- 10-20 Option Vehicles; Purchase Options May Be Assigned to Other Streetcar Cities
- Option Assignment Payments Could Offset Some Purchase Costs

# Streetcar Vehicle Contract

- On-Board Energy Storage System for Wireless Operations (Inbound, from Capitol Hill to Pioneer Square)
- Inekon is Czech Company that Built SLU and Portland Cars

# Streetcar Construction Contract

- General Contractor/Construction Manager
- Stacy & Witbeck—Providing Preconstruction Services, Negotiating Price & Schedule
- Completing Negotiations of Maximum-Price Contract
- Approx. \$68 M
- Contractor's Proposed Schedule: Completion Q1 2014

# Total Capital Budget

- Total Budget \$134 M—ST Funding & Betterments
  - Interlocal Agreement: \$132.8 M
  - Betterment Agreements: \$ 1.2 M



# Total Capital Budget

- Cost Categories:
  - Design Phase
  - Vehicles
  - Construction Contract
  - Owner's Costs
  - Contingencies

# Contingency & Risk

- Total Contingency Approx. \$13.5 M (20% of Construction Cost)
- G/CM Contingency—Approx. \$6.5 M
- Unallocated Contingency—Approx. \$7 M

# Risk Categories

- Differing Site Conditions
- Third-Party Agreements
- City's Construction Management Costs
- Traffic Control (Uniformed Officers)
- Bridge Strengthening (Estimated \$150K)

# Further Risk Mitigation Options

- Pioneer Square Segment Exceeds Minimum Scope Requirement of Interlocal
- Segment Cost-Approximately \$4 M

# Operating Objectives & Service Plan

- Operating Objective is to Provide Alternative U-Link Connection to First Hill
- U-Link Opening Mid-2016
- Interlocal Establishes Minimum Operating Plan for U-Link Connectivity—10 Minute Peak Headways

# Preliminary Service Plan

- 2014-mid 2016: Headway 10 Minutes Day/20 Minutes Night
- Four Vehicles in Operation—Fifth Car or Extra Operator May be Added in Peaks If Needed to Maintain Headway
- After U-Link Opens, Reduce Night Headways to 15 Minutes

# Operating Funding & Budget

- Funded through Interlocal Agreement
- Maximum Funding:
  - 2014: \$4.9 M
  - 2015: \$5.1 M
  - 2016: \$5.3 M
  - Etc.

# Operating Funding & Budget

- 2014 Service Plan-Cost Estimate
- \$4.5 M including 10% Contingency



# Next Steps

- SDOT Director's Certification to Sound Transit (per Interlocal Agreement)
- Council Authorization to Execute Construction Contract
- Notice to Proceed/Groundbreaking