

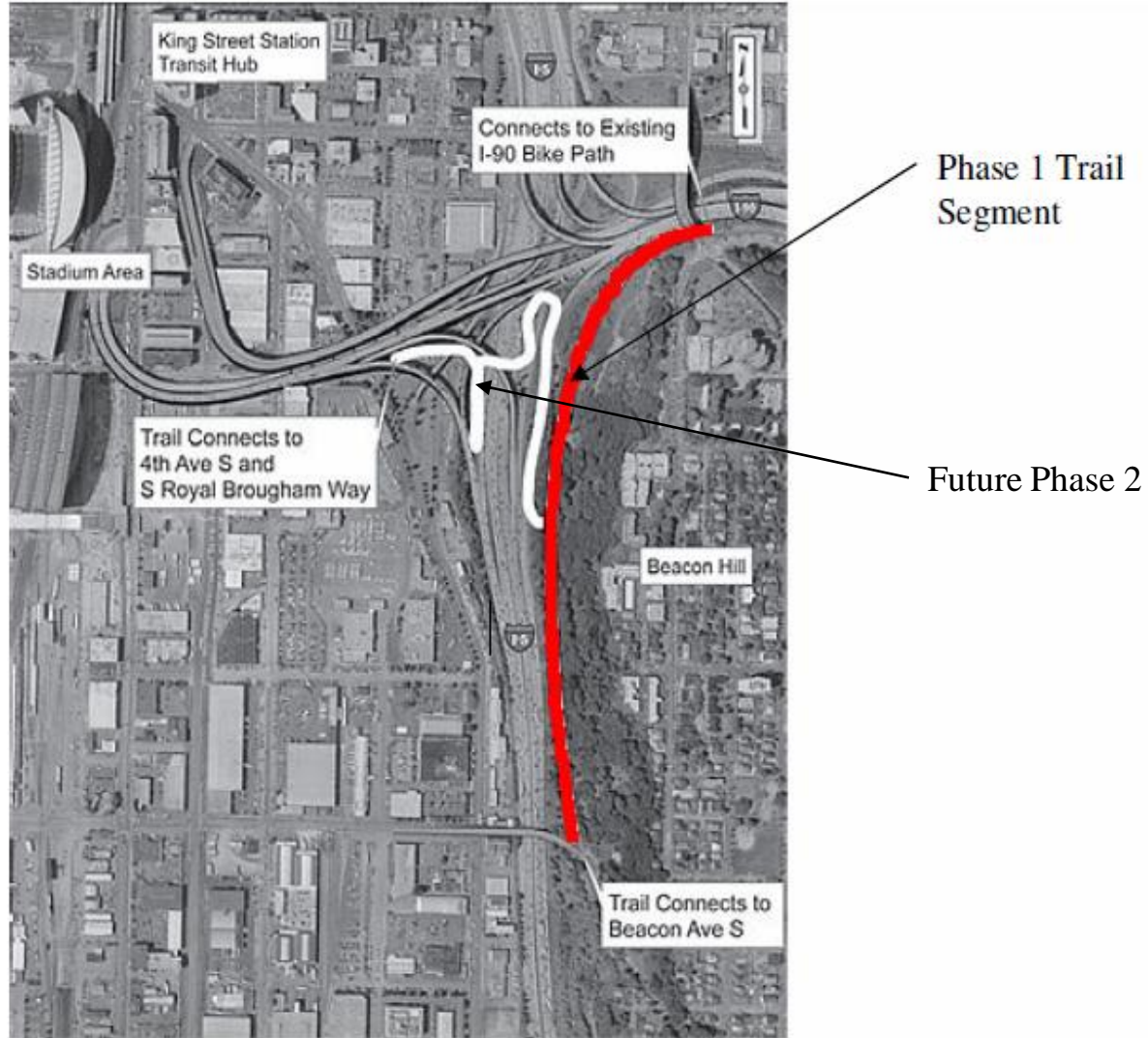
# Mountains to Sound Greenway Trail

*Seattle City Council  
Transportation Committee  
August 10, 2010*

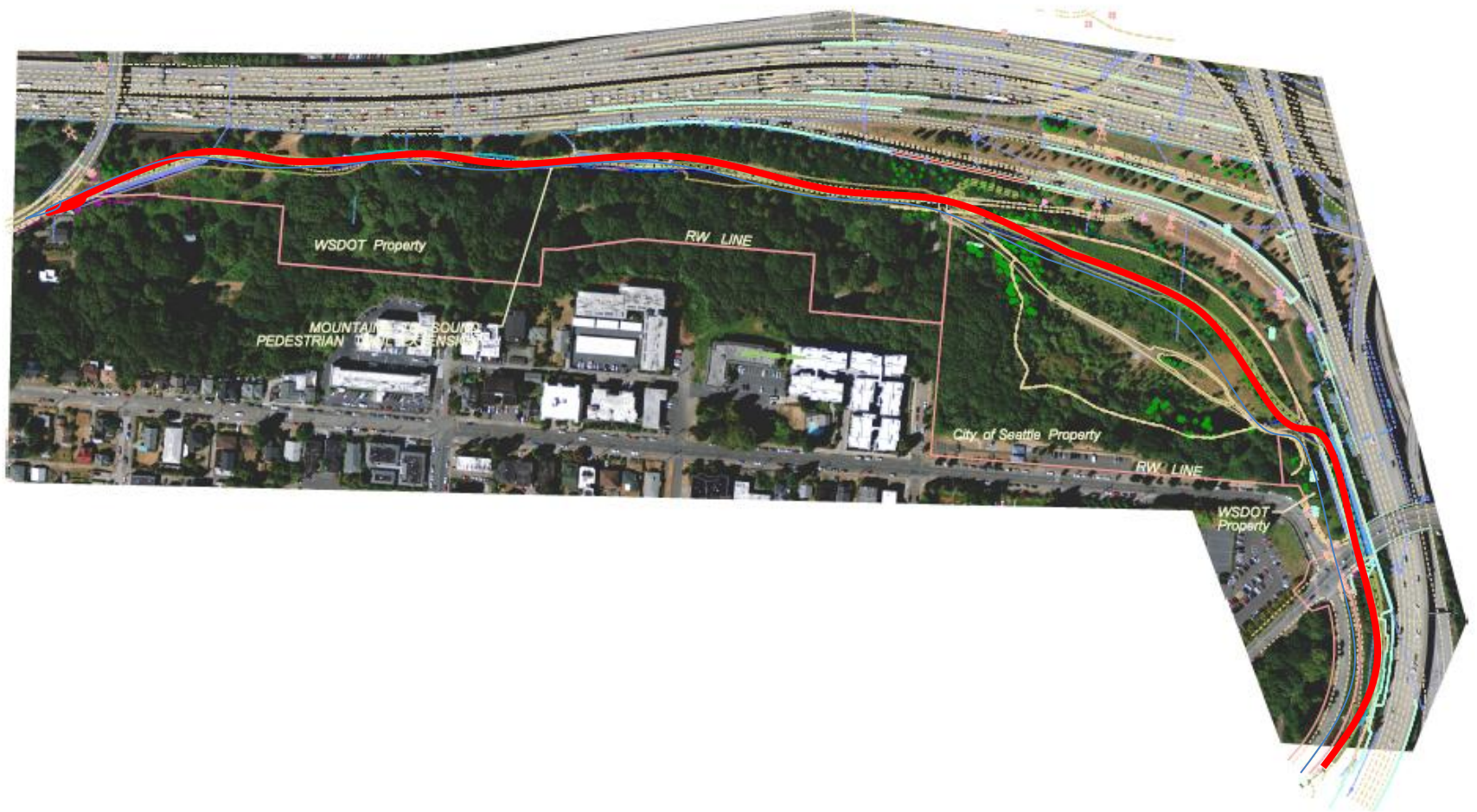
# Mountains to Sound Greenway Trail

- The Mountains to Sound Greenway stretches over 100 miles along I-90 from Puget Sound to Central Washington, and encompasses a regional trail system
- Current project is to design and construct a trail connection from the end of the I-90 Trail at 12<sup>th</sup> Ave S. (Jose Rizal Bridge) and Sturgus Ave S. to the east approach of the Holgate I-5 overpass
- Work includes paving the trail, installing a crosswalk, landscaping, lighting, and directional and regulatory signage
- \$3.424M budget is fully funded in current CIP
- Scheduled to start construction 2011Q2, complete by end of 2011

# Mountains-to-Sounds Site Map



# Mountains to Sound Trail Property Map





# MTS Typical Trail Area



# Mountains to Sound Trail

## Lease and Construction Agreements

- Lease agreement:
  - Trail within WSDOT right-of-way will be owned and maintained by the City
  - WSDOT retains ultimate authority for use of WSDOT right-of-way
  - City responsible for replacing the bike connection in future if displaced for other WSDOT purposes
  - City and WSDOT believe future displacement is unlikely, and “in-kind” replacement is not required
- Construction agreement:
  - Trail will be constructed by WSDOT with City & grant funding
- SDOT recommends approval of Lease and Construction Agreements in order to begin construction in the 2011 construction season