

SUMMARY and FISCAL NOTE*

Department:	Dept. Contact/Phone:	CBO Contact/Phone:
Seattle Department of Transportation	Gretchen M. Haydel/ 206 233-5140	Christie Parker/ 206 684-5211

** Note that the Summary and Fiscal Note describes the version of the bill or resolution as introduced; final legislation including amendments may not be fully described.*

1. BILL SUMMARY

Legislation Title:

AN ORDINANCE accepting various deeds for street or alley purposes; laying off, opening, widening, extending, and establishing portions of rights-of-way; placing the real property conveyed by said deeds under the jurisdiction of the Seattle Department of Transportation; and ratifying and confirming certain prior acts. (This ordinance concerns the following rights-of-way: the alley in Block 94, D.T. Denny's First Addition to North Seattle; the alley in Lots 01 through 06 and Lots 15 through 22, Central Addition to Columbia; the alley in Block 40, Second Addition to the Town of Seattle as laid off by the Heirs of Sarah A. Bell (deceased) (Commonly known as Heirs of Sarah A. Bell's 2nd Addition to the City of Seattle); Garfield Street abutting Block 7, Union Lake Addition Supplemental to the City of Seattle; 30th Avenue Northeast abutting Block 1, Kenwood Division Two; the alley in Block 13, Pontius Fourth Addition to the City of Seattle; the alley in Block V, Bell's 6th Addition to the City of Seattle; the alleys in Parcel A and Parcel B, City of Seattle Lot Boundary Adjustment Number 3029414 recorded under King County Recording Number 20180212900012 (previously known as Block 4, Sea View Park); the alley in Block 7, Queen Addition to the City of Seattle; the alley in Block 32, South Park; the alley in Block 20, North Seattle; the alley in Block 36, Second Addition to that part of the City of Seattle, as laid off by A.A. Denny and W.N. Bell (Commonly known as Bell & Denny's 2nd Addition to the City of Seattle); the alley in Block 103, David T. Denny's First Addition to North Seattle; the alley in Block 10, Westlake Boulevard Addition to the City of Seattle; the alley in Unit 7, 516-528 Valley Street, a condominium, according to the Declaration thereof recorded under King County Recording Number 20191030000832, located in Survey Map and Plans filed in Volume 306 of Condominiums, pages 38 through 40 (previously known as Block 46, Replat of Blocks 44 to 53 inclusive Mercer's Second Addition to North Seattle); and the alley in Parcels A, B, and C, City of Seattle Lot Boundary Adjustment Number 3032062-LU, recorded under King County Recording Number 20190109900005 (previously known as Block 10, Greenwood Park 2nd Addition to the City of Seattle.)

Summary and background of the Legislation:

This Council Bill accepts 20 deeds for street or alley purposes, designates the property as right-of-way, places them under the jurisdiction of the Seattle Department of Transportation, and ratifies and confirms certain prior acts. The deeds are for property transferred to the City for street or alley purposes as a result of conditions imposed on private development projects.

2. CAPITAL IMPROVEMENT PROGRAM

Does this legislation create, fund, or amend a CIP Project? ☐ Yes ☒ No

3. SUMMARY OF FINANCIAL IMPLICATIONS

Does this legislation amend the Adopted Budget? ☐ Yes ☒ No

Does the legislation have other financial impacts to The City of Seattle that are not reflected in the above, including direct or indirect, short-term or long-term costs?

The costs associated with implementing this ordinance, for example, maintaining the newly-acquired rights-of-way, have been anticipated in the 2022 budget.

Is there financial cost or other impacts of *not* implementing the legislation?

None.

4. OTHER IMPLICATIONS

a. Does this legislation affect any departments besides the originating department?

Yes. The Department of Construction and Inspections evaluates the building development projects and determines the conditions that must be met pursuant to the City's Land Use Code and the Seattle Right of Way Manual with respect to the dedication of these deeds to the City.

b. Is a public hearing required for this legislation?

No.

c. Is publication of notice with *The Daily Journal of Commerce* and/or *The Seattle Times* required for this legislation?

No.

d. Does this legislation affect a piece of property?

Yes.

e. Please describe any perceived implication for the principles of the Race and Social Justice Initiative. Does this legislation impact vulnerable or historically disadvantaged communities? What is the Language Access plan for any communications to the public?

There are no known impacts to vulnerable or historically disadvantaged communities and a Language Access Plan is not required to be implemented to accept dedicated property.

f. Climate Change Implications

1. Emissions: Is this legislation likely to increase or decrease carbon emissions in a material way?

No.

- 2. Resiliency: Will the action(s) proposed by this legislation increase or decrease Seattle's resiliency (or ability to adapt) to climate change in a material way? If so, explain. If it is likely to decrease resiliency in a material way, describe what will or could be done to mitigate the effects.**

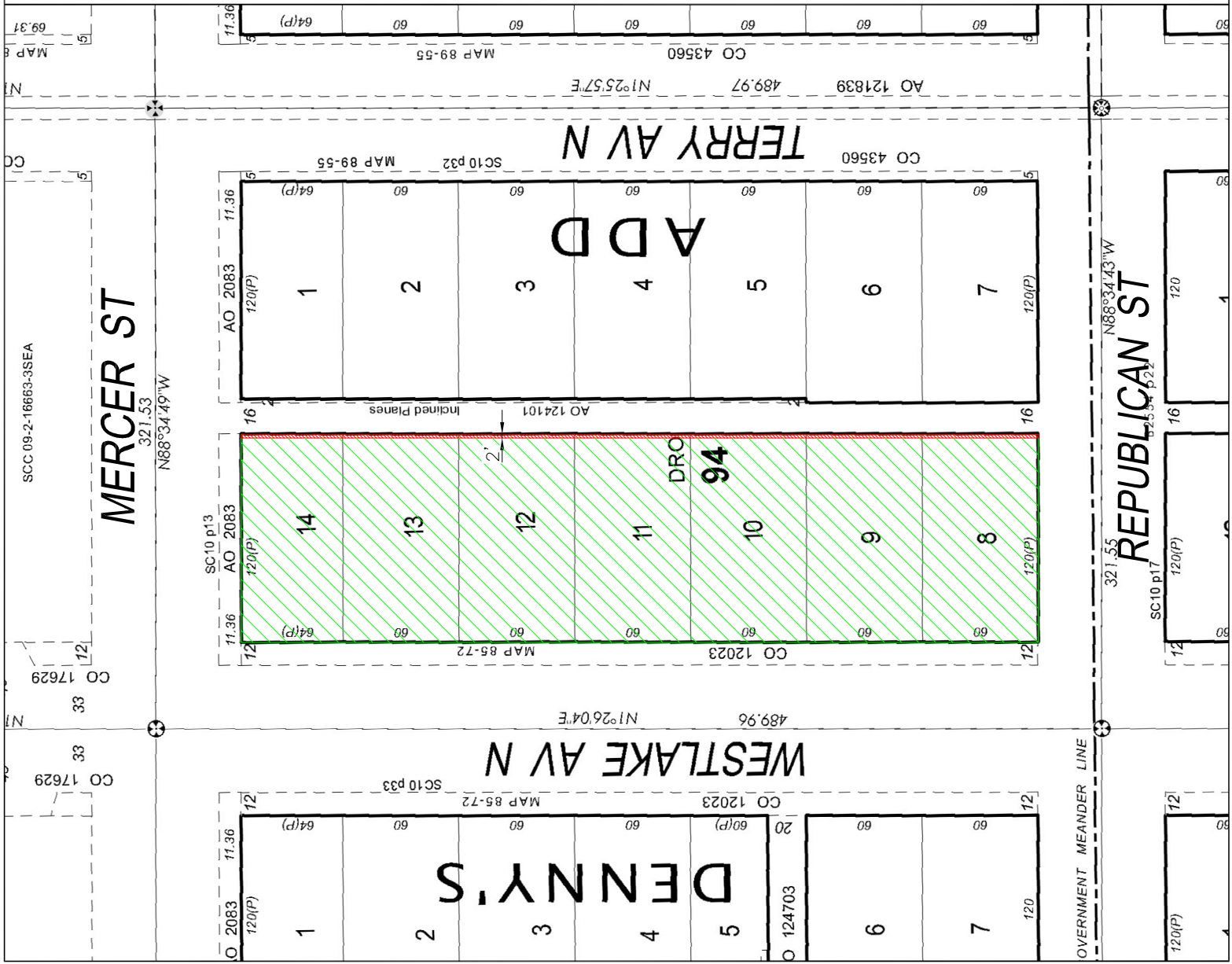
No.

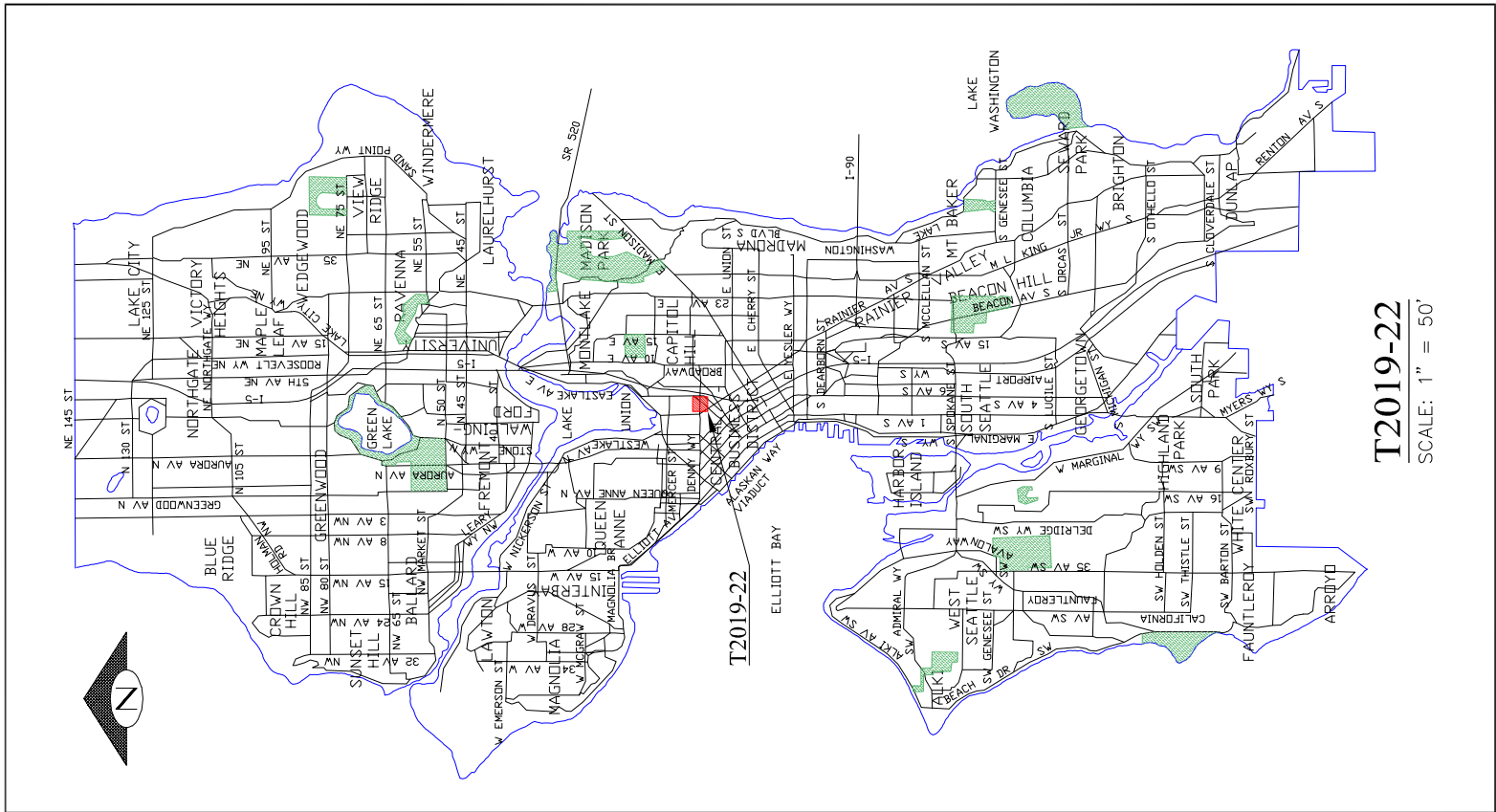
- g. If this legislation includes a new initiative or a major programmatic expansion: What are the specific long-term and measurable goal(s) of the program? How will this legislation help achieve the program's desired goal(s).**

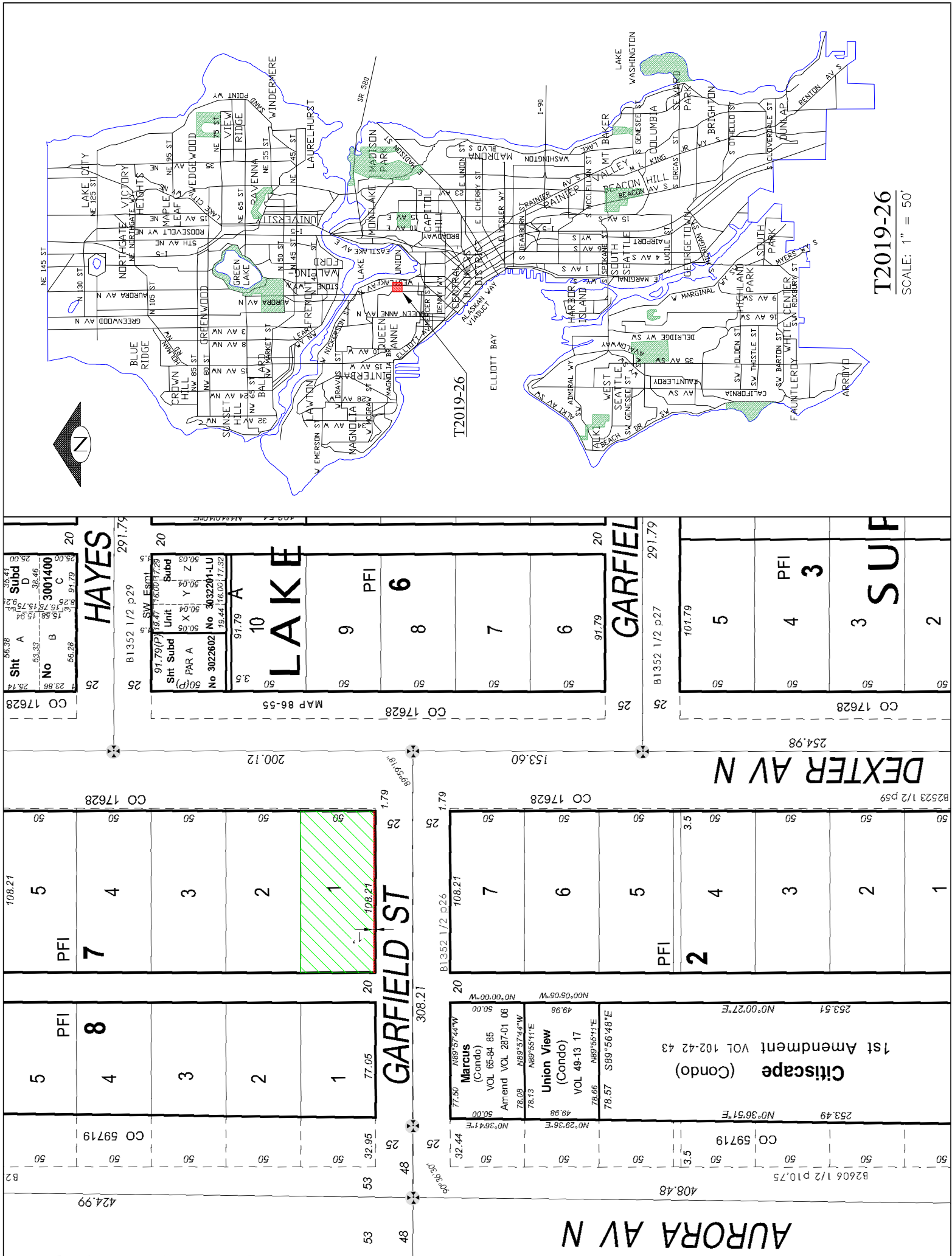
This legislation does not include a new initiative or a major programmatic expansion.

List attachments/exhibits below:

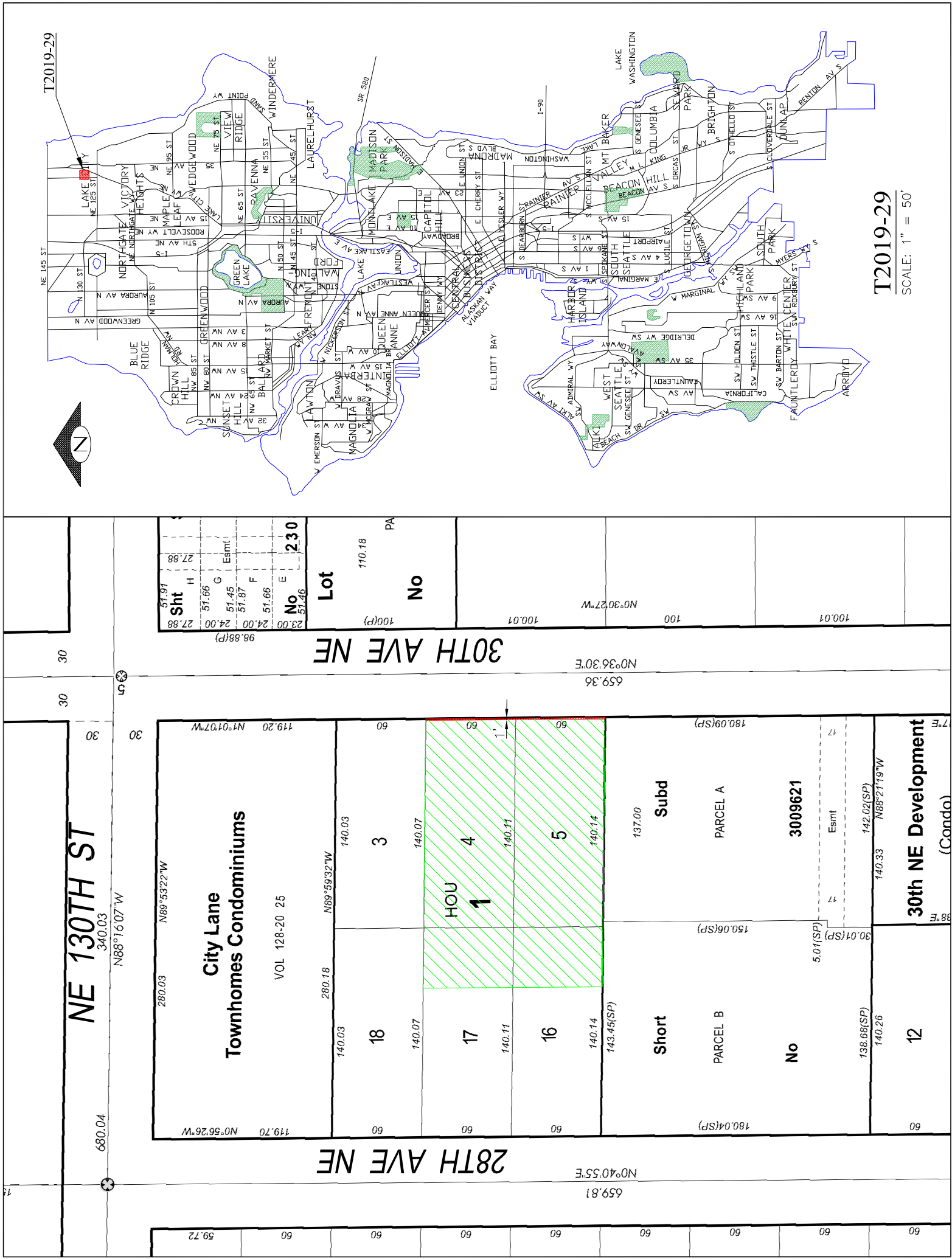
Summary Attachment 1 through 20 - Maps of properties being conveyed to The City of Seattle for street and alley purposes.

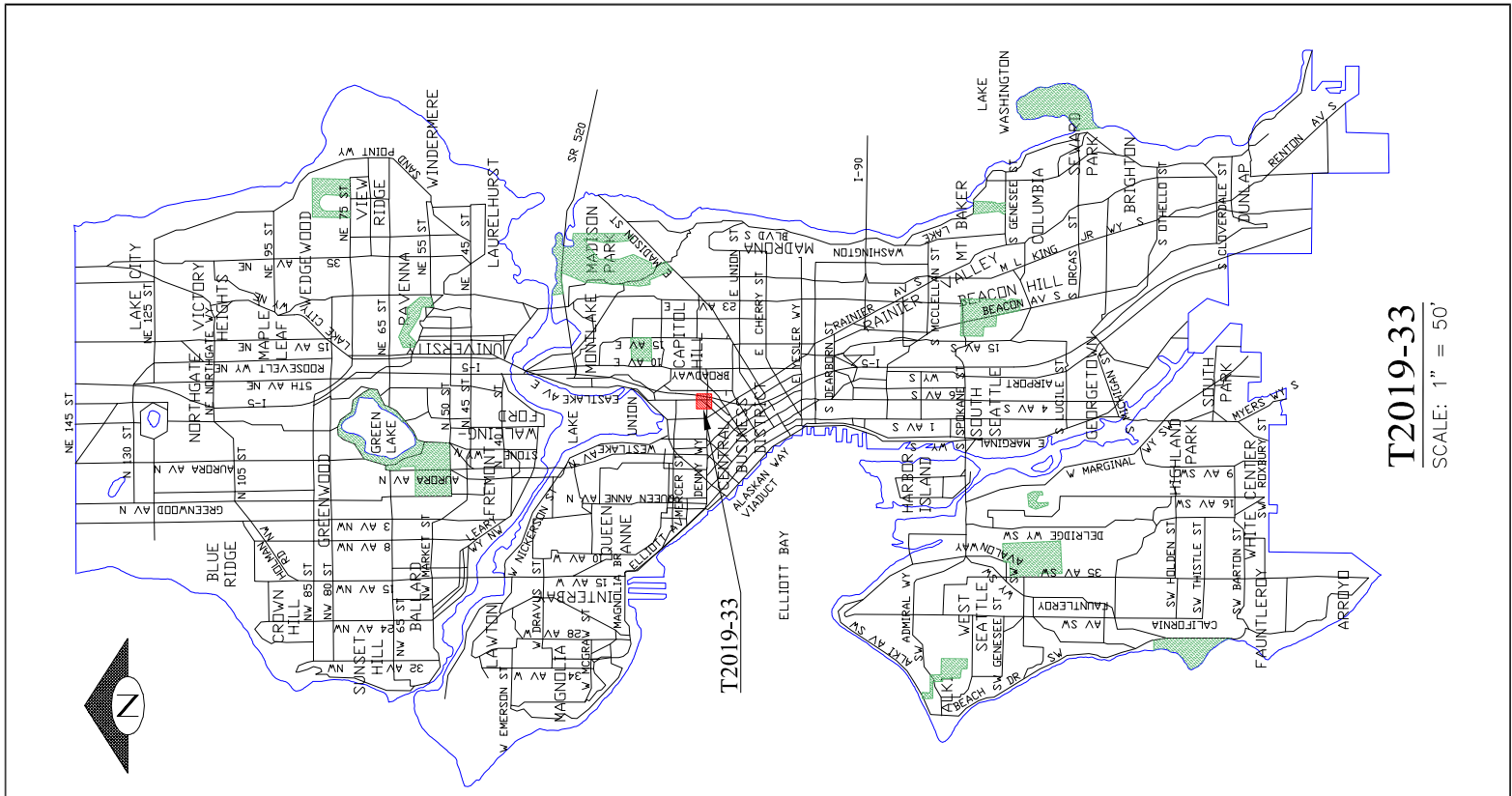
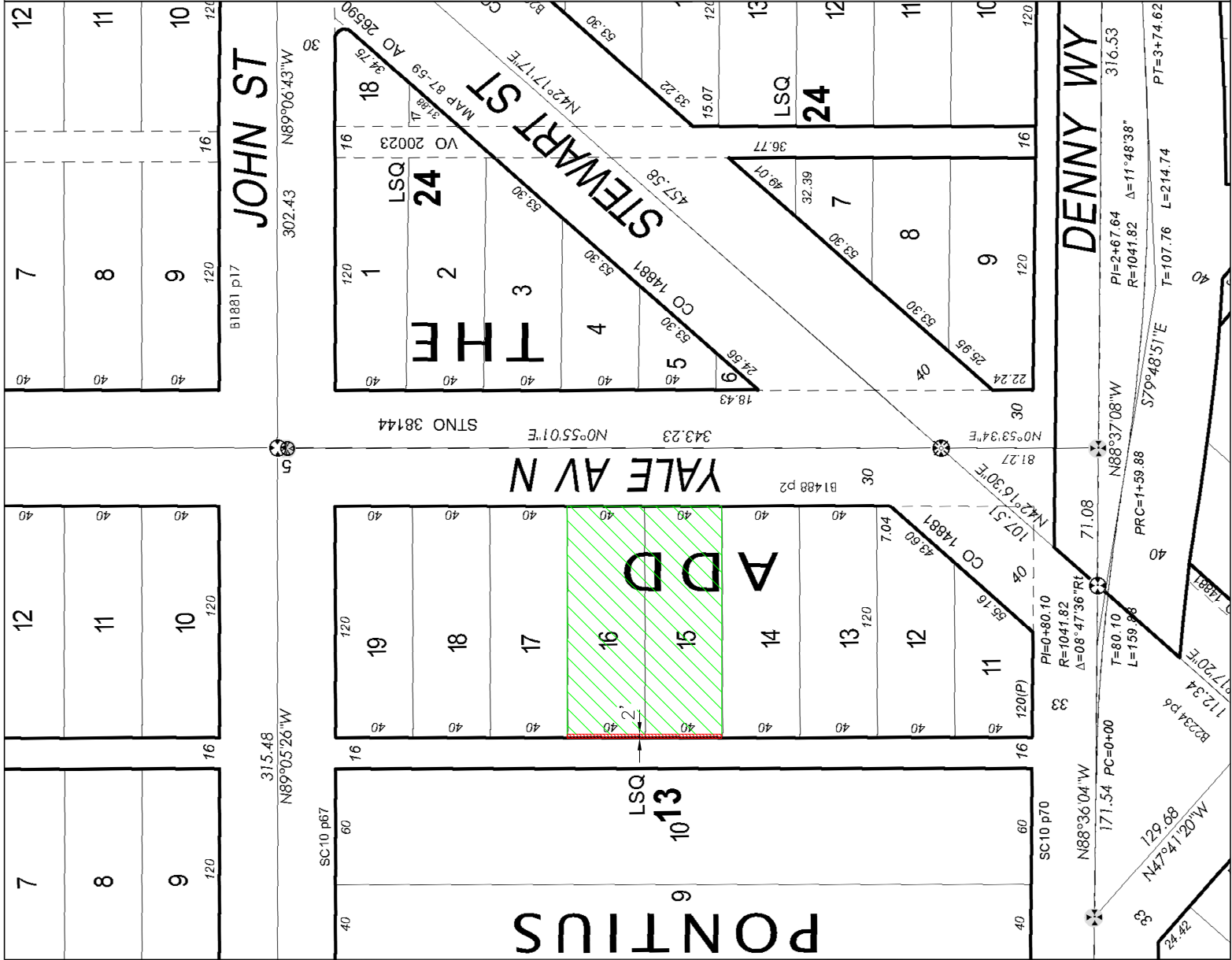


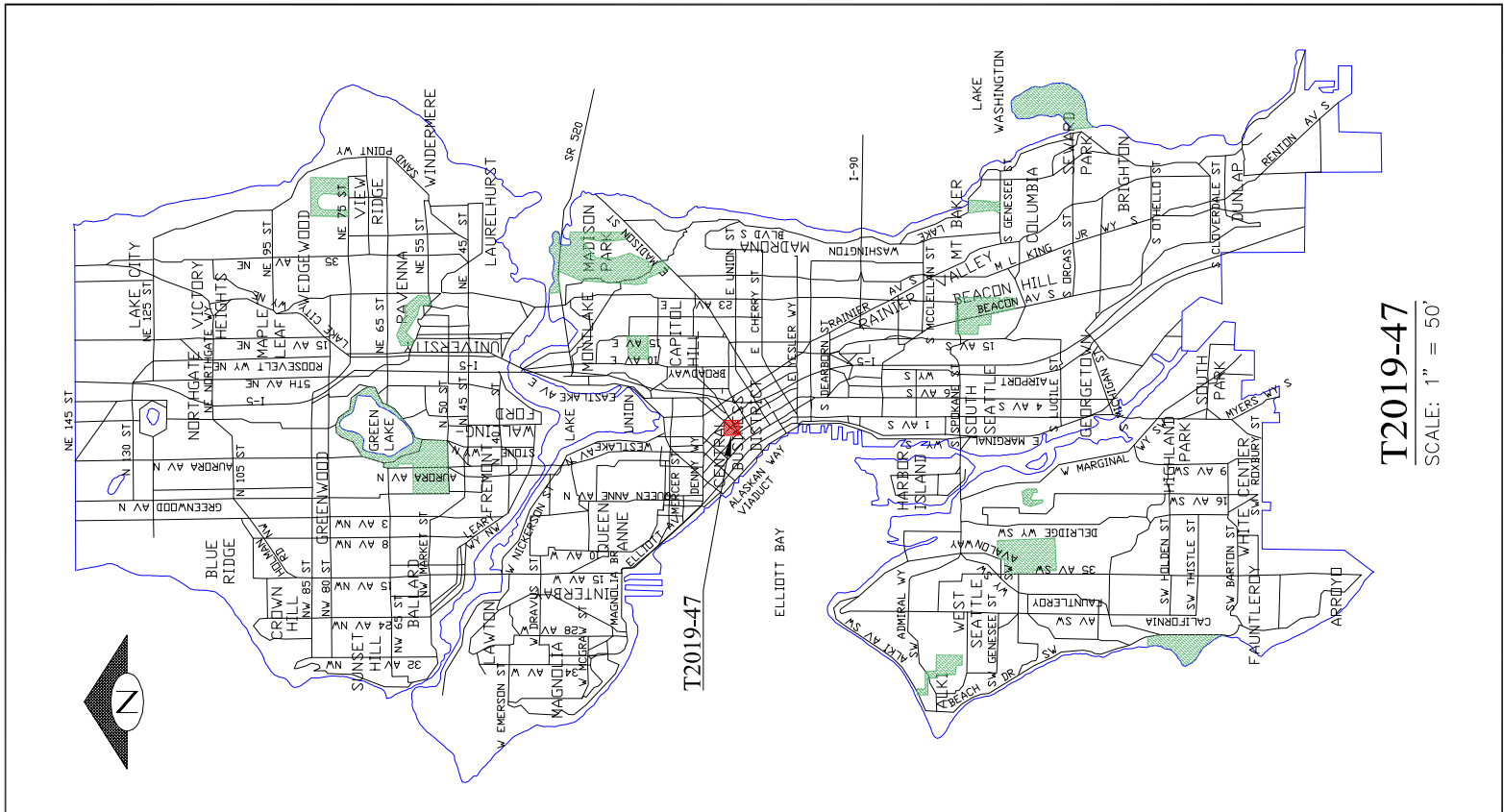
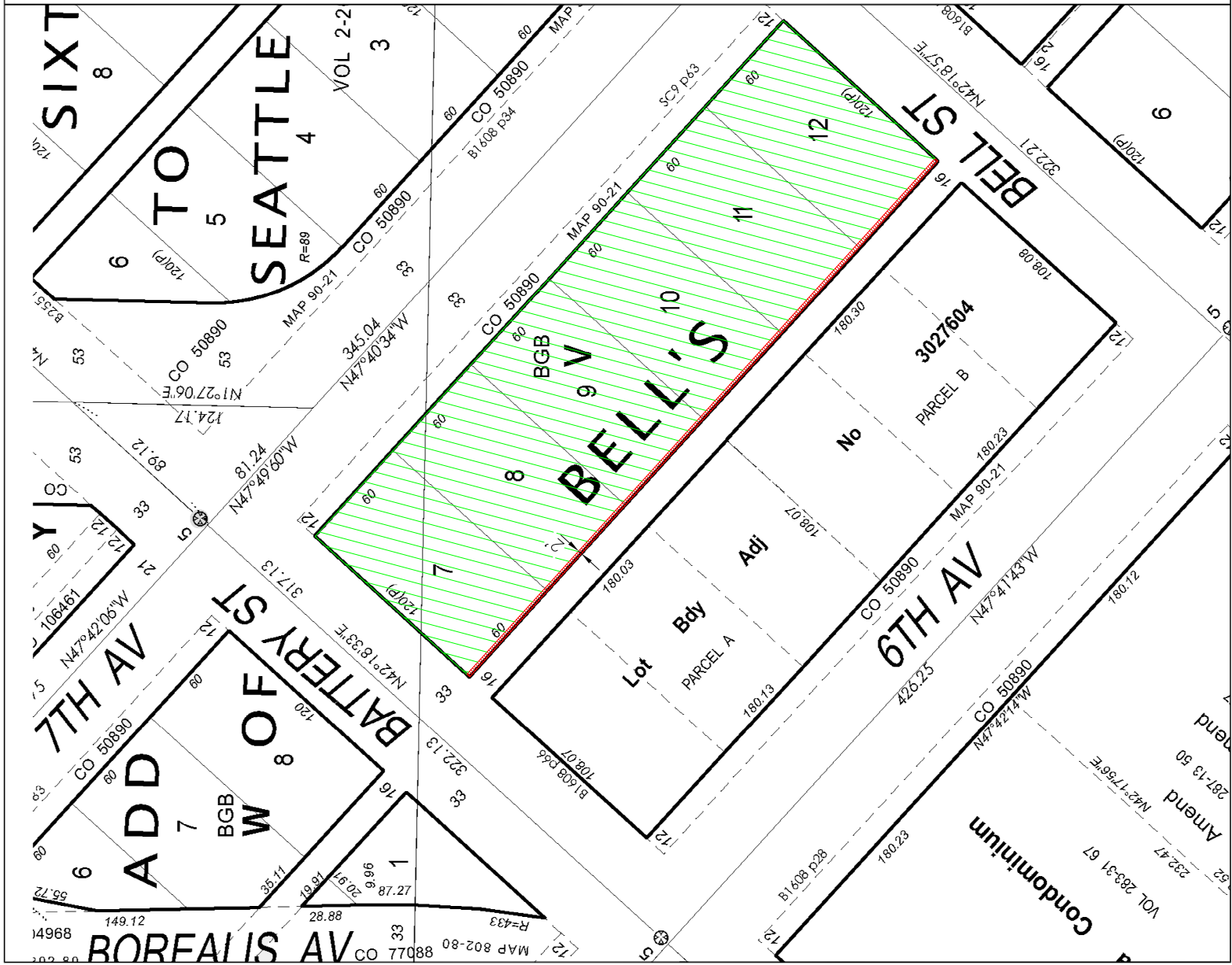




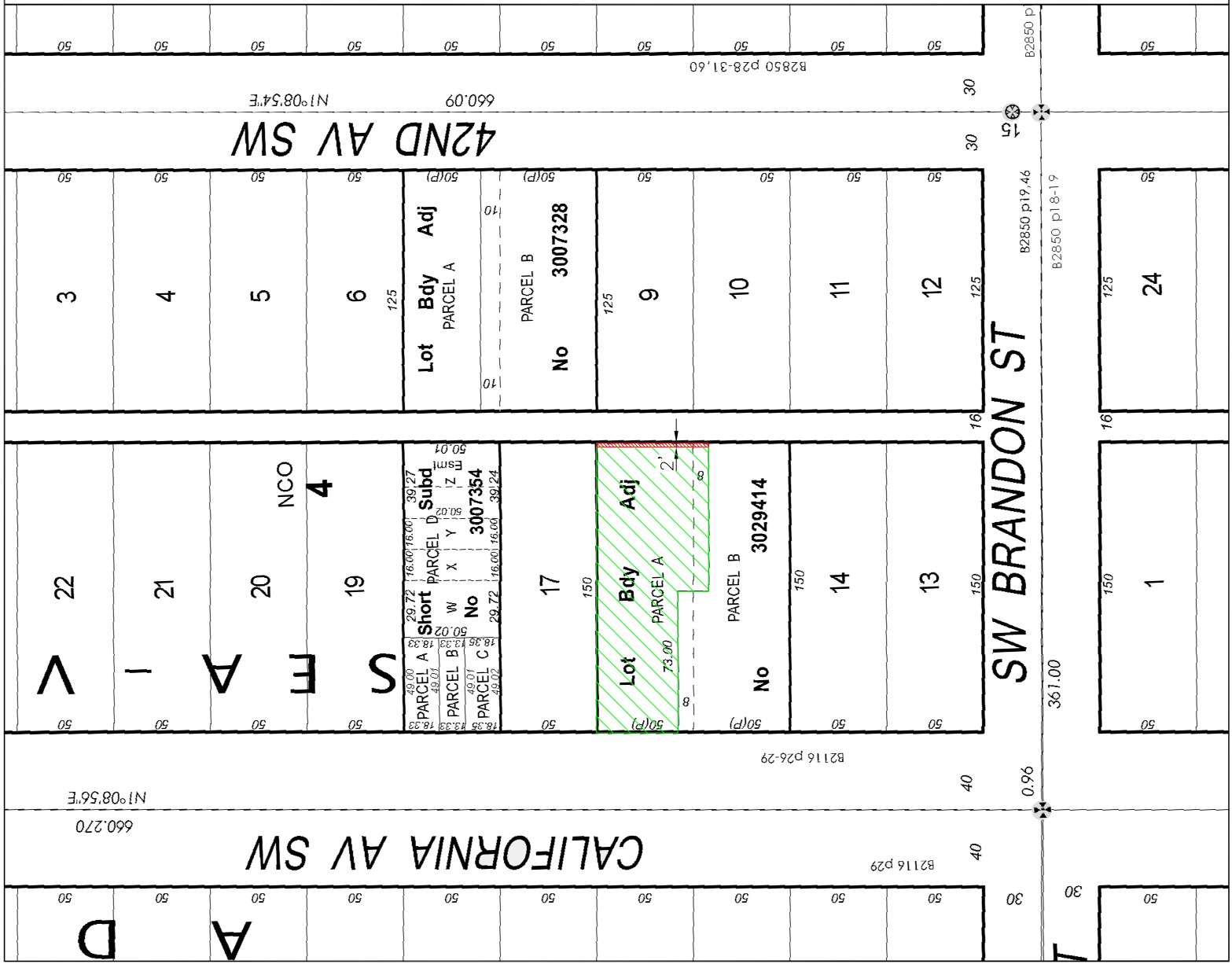
T2019-26
SCALE: 1" = 50'

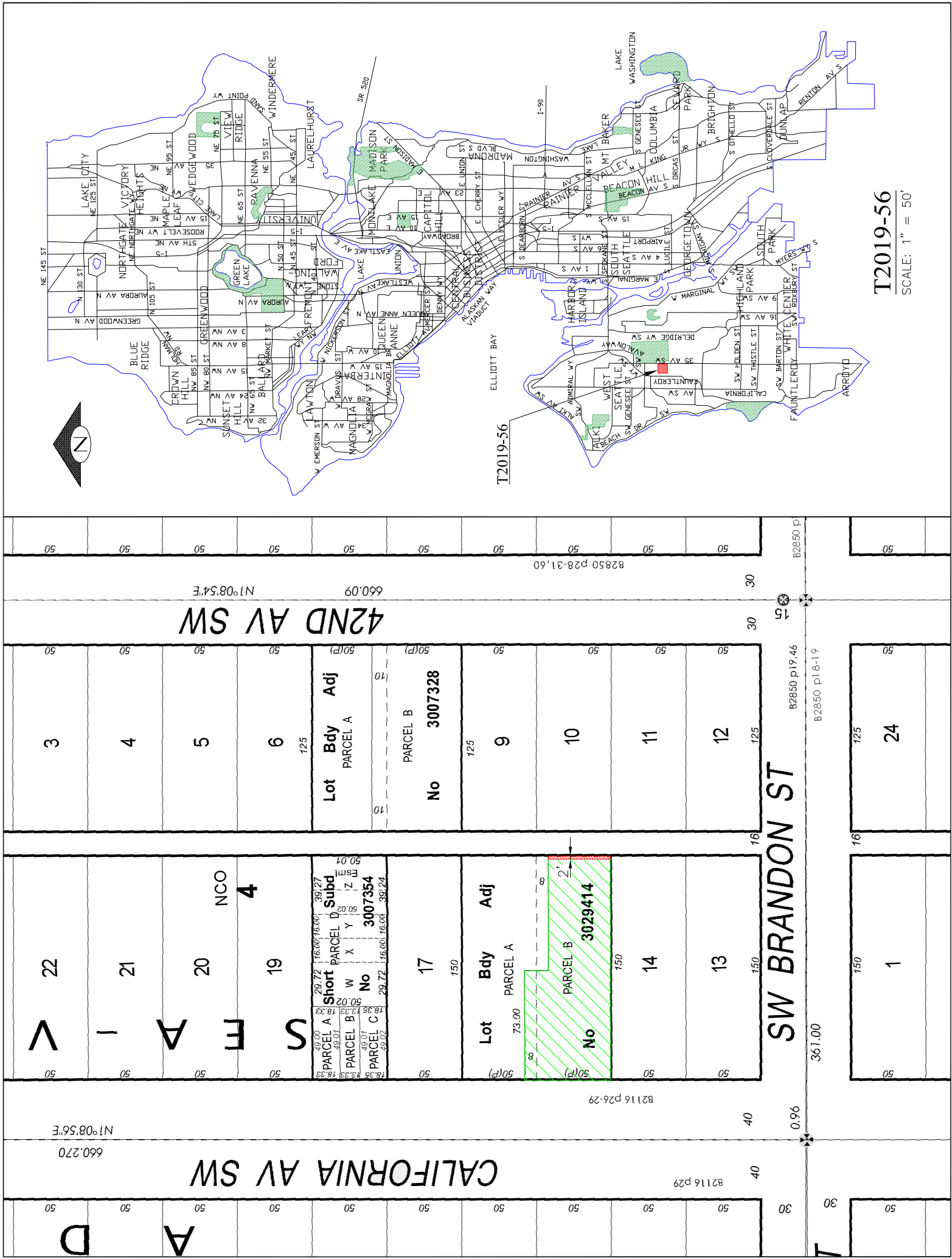


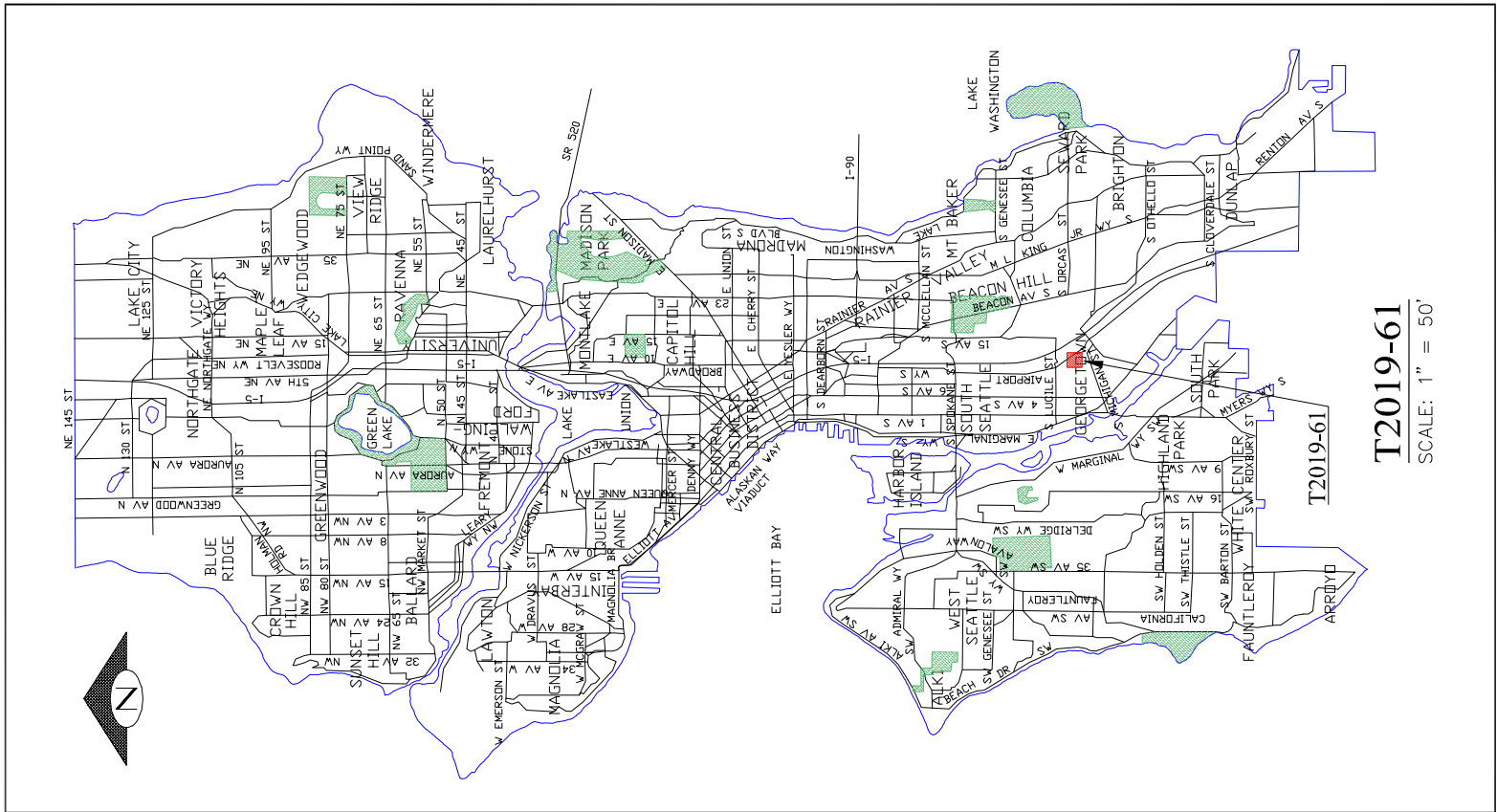
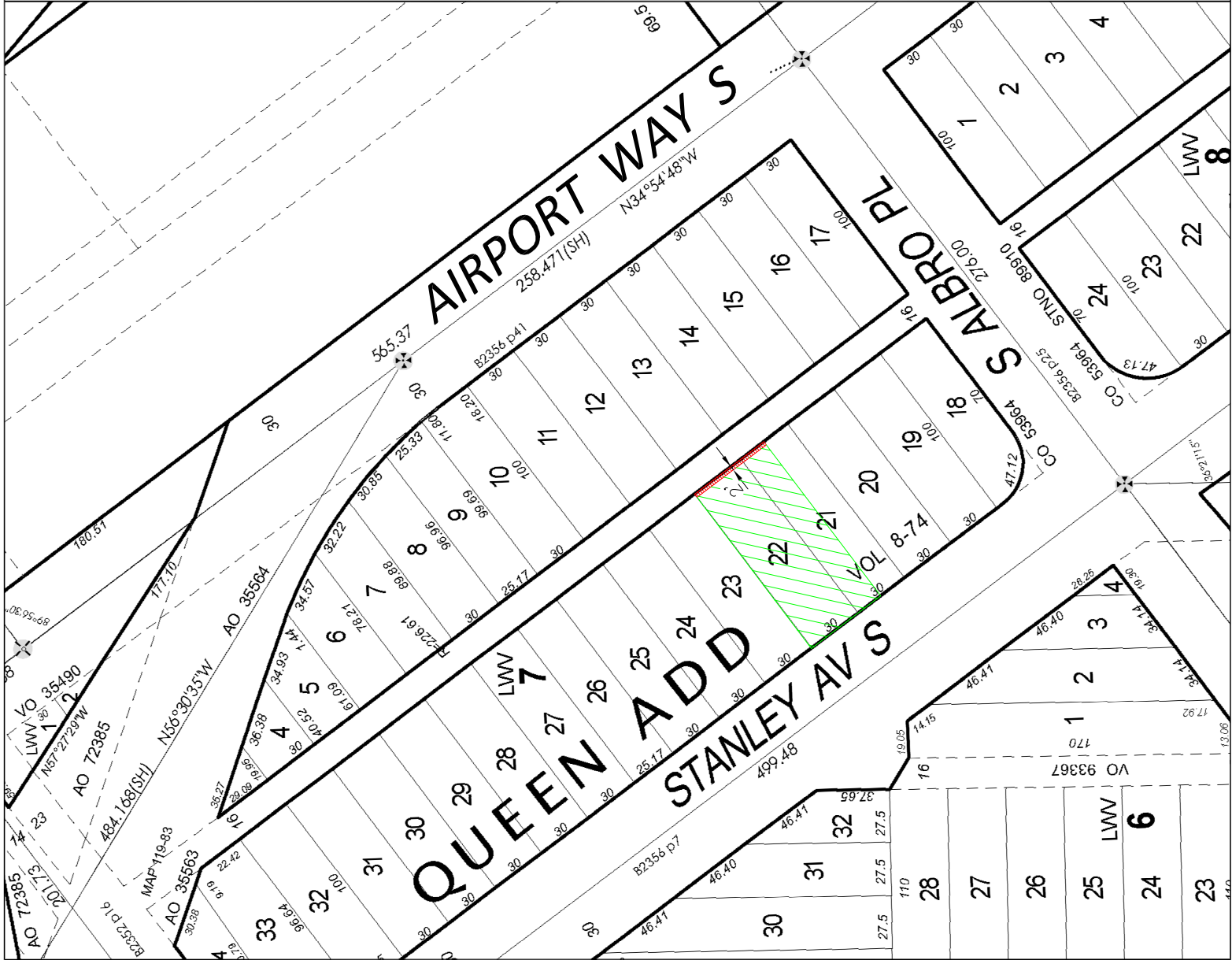


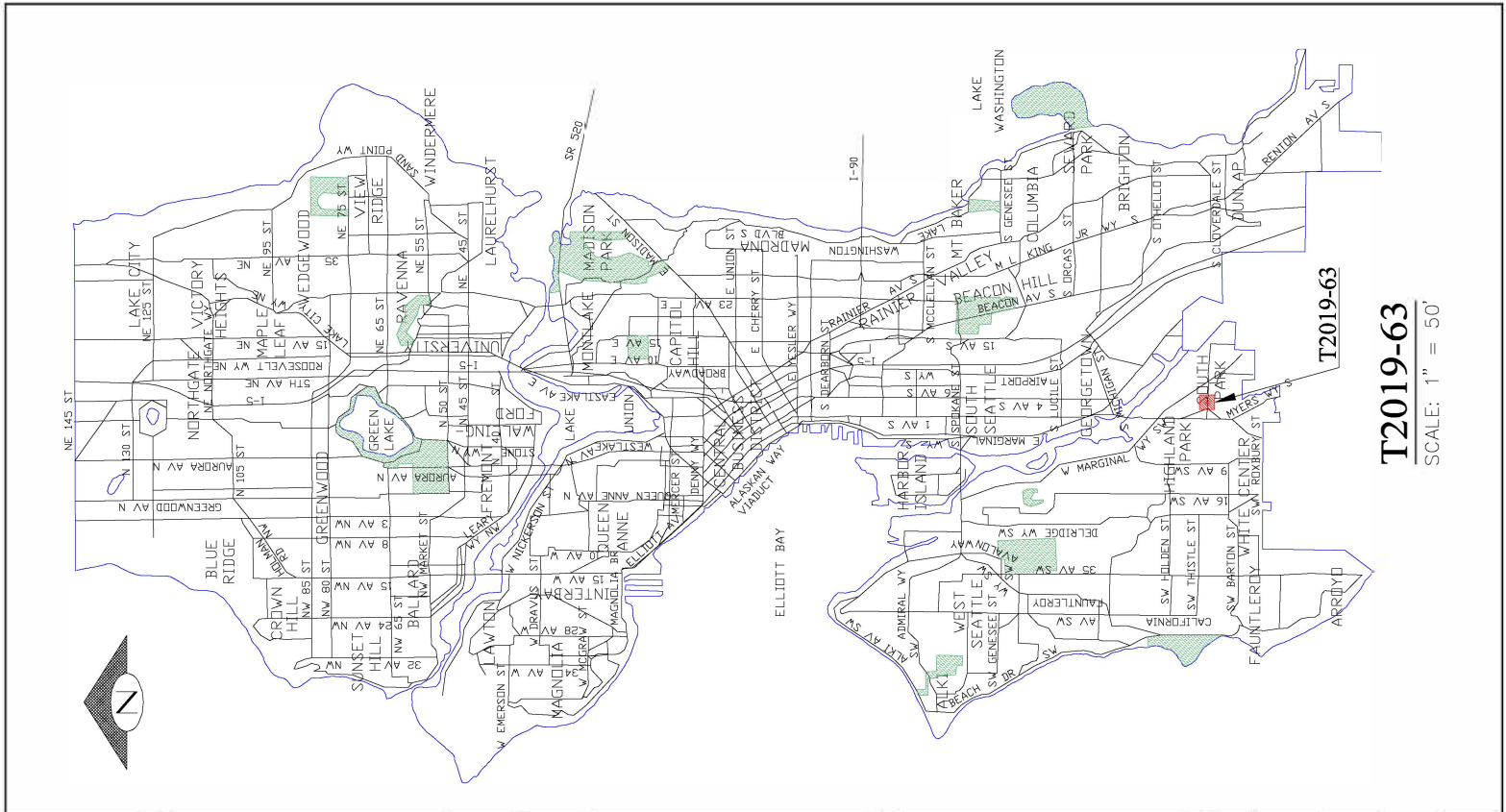


T2019-47
SCALE: 1" = 50'









PARK										12TH AVE S									
NUR										B2463 1/2 P32									
33										309.67									
1058 S Cloverdale Condominium										N1°46'02"E									
VOL 308-19 21										N1°43'48"E									
S88°39'16"E										310.38									
50.00										120									
20190221000400										120									
33										48									
1058 S Cloverdale Condominium										120									
VOL 308-19 21										120									
S88°39'16"E										120									
50.00										120									
20190221000400										120									
33										48									
1058 S Cloverdale Condominium										120									
VOL 308-19 21										120									
S88°39'16"E										120									
50.00										120									
20190221000400										120									
33										48									
1058 S Cloverdale Condominium										120									
VOL 308-19 21										120									
S88°39'16"E										120									
50.00										120									
20190221000400										120									
33										48									
1058 S Cloverdale Condominium										120									
VOL 308-19 21										120									
S88°39'16"E										120									
50.00										120									
20190221000400										120									
33										48									
1058 S Cloverdale Condominium										120									
VOL 308-19 21										120									
S88°39'16"E										120									
50.00										120									
20190221000400										120									
33										48									
1058 S Cloverdale Condominium										120									
VOL 308-19 21										120									
S88°39'16"E										120									
50.00										120									
20190221000400										120									
33										48									
1058 S Cloverdale Condominium										120									
VOL 308-19 21										120									
S88°39'16"E										120									
50.00										120									
20190221000400										120									
33										48									
1058 S Cloverdale Condominium										120									
VOL 308-19 21										120									
S88°39'16"E										120									
50.00										120									
20190221000400										120									
33										48									
1058 S Cloverdale Condominium										120									
VOL 308-19 21										120									
S88°39'16"E										120									
50.00										120									
20190221000400										120									
33										48									
1058 S Cloverdale Condominium										120									
VOL 308-19 21										120									
S88°39'16"E										120									
50.00										120									
20190221000400										120									
33										48									
1058 S Cloverdale Condominium										120									
VOL 308-19 21										120									
S88°39'16"E										120									
50.00										120									
20190221000400										120									
33										48									
1058 S Cloverdale Condominium										120									
VOL 308-19 21										120									
S88°39'16"E										120									
50.00										120									
20190221000400										120									
33										48									
1058 S Cloverdale Condominium										120									
VOL 308-19 21										120									
S88°39'16"E										120									
50.00										120									
20190221000400										120									
33										48									
1058 S Cloverdale Condominium										120									
VOL 308-19 21										120									
S88°39'16"E										120									
50.00										120									
20190221000400										120									
33										48									
1058 S Cloverdale Condominium										120									
VOL 308-19 21										120									
S88°39'16"E										120									
50.00										120									
20190221000400										120									
33										48									
1058 S Cloverdale Condominium										120									
VOL 308-19 21										120									
S88°39'16"E										120									
50.00										120									
20190221000400										120									
33										48									
1058 S Cloverdale Condominium										120									
VOL 308-19 21										120									
S88°39'16"E										120									
50.00										120									
20190221000400										120									
33										48									
1058 S Cloverdale Condominium										120									
VOL 308-19 21										120									
S88°39'16"E										120									
50.00										120									
20190221000400										120									
33										48									
1058 S Cloverdale Condominium										120									
VOL 308-19 21										120									
S88°39'16"E										120									
50.00										120									
20190221000400										120									
33										48									
1058 S Cloverdale Condominium										120									
VOL 308-19 21										120									
S88°39'16"E										120									
50.00										120									
20190221000400										120									
33										48									
1058 S Cloverdale Condominium										120									
VOL 308-19 21										120									
S88°39'16"E										120									
50.00										120									
20190221000400										120									
33										48									
1058 S Cloverdale Condominium										120									
VOL 308-19 21										120									
S88°39'16"E										120									
50.00										120									
20190221000400										120									
33										48									
1058 S Cloverdale Condominium										120									
VOL 308-19 21										120									
S88°39'16"E										120									
50.00										120									
20190221000400										120									
33										48									
1058 S Cloverdale Condominium										120									
VOL 308-19 21										120									
S88°39'16"E										120									
50.00										120									
20190221000400										120									
33										48									
1058 S Cloverdale Condominium										120									
VOL 308-19 21										120									
S88°39'16"E										120									
50.00										120									
20190221000400										120									
33										48									
1058 S Cloverdale Condominium										120									
VOL 308-19 21										120									
S88°39'16"E										120									
50.00										120									
20190221000400										120									
33										48									
1058 S Cloverdale Condominium										120									
VOL 308-19 21										120									
S88°39'16"E										120									
50.00										120									
20190221000400										120									
33										48									
1058 S Cloverdale Condominium										120									
VOL 308-19 21										120									
S88°39'16"E										120									
50.00										120									
20190221000400										120									
33										48									
1058 S Cloverdale Condominium										120									
VOL 308-19 21										120									
S88°39'16"E										120									
50.00										120									
20190221000400										120									
33										48									
1058 S Cloverdale Condominium										120									
VOL 308-19 21										120									
S88°39'16"E										120									
50.00										120									
20190221000400										120									
33										48									
1058 S Cloverdale Condominium										120									
VOL 308-19 21										120									
S88°39'16"E										120									
50.00										120									
20190221000400										120									
33										48									
1058 S Cloverdale Condominium										120									
VOL 308-19 21										120									
S88°39'16"E										120									
50.00										120									
20190221000400										120									
33										48									
1058 S Cloverdale Condominium										120									
VOL 308-19 21										120									
S88°39'16"E										120									
50.00										120									
20190221000400										120									
33										48									
1058 S Cloverdale Condominium										120									
VOL 308-19 21										120									
S88°39'16"E										120									
50.00										120									
20190221000400										120									
33										48									
1058 S Cloverdale Condominium										120									
VOL 308-19 21										120									
S88°39'16"E										120									
50.00										120									
20190221000400										120									
33										48									
1058 S Cloverdale Condominium										120									
VOL 308-19 21										120									
S88°39'16"E										120									
50.00										120									
20190221000400										120									
33										48									
1058 S Cloverdale Condominium										120									
VOL 308-19 21										120									
S88°39'16"E										120									
50.00										120									
20190221000400										120									
33										48									
1058 S Cloverdale Condominium										120									
VOL 308-19 21										120									
S88°39'16"E										120									
50.00										120									
20190221000400										120									
33										48									
1058 S Cloverdale Condominium										120									
VOL 308-19 21										120									
S88°39'16"E										120									
50.00										120									
20190221000400										120									
33										48									
1058 S Cloverdale Condominium										120									
VOL 308-19 21										120									
S88°39'16"E										120									
50.00										120									
20190221000400										120									
33										48									
1058 S Cloverdale Condominium										120									
VOL 308-19 21										120									
S88°39'16"E										120									
50.00										120									
20190221000400										120									
33										48									
1058 S Cloverdale Condominium										120									
VOL 308-19 21										120									
S88°39'16"E										120									
50.00										120									
20190221000400										120									
33										48									
1058 S Cloverdale Condominium										120									
VOL 308-19 21										120									
S88°39'16"E										120									
50.00										120									
20190221000400										120									
33										48									
1058 S Cloverdale Condominium										120									
VOL 308-19 21										120									
S88°39'16"E										120									
50.00										120									
20190221000400										120									
33										48									
1058 S Cloverdale Condominium										120									
VOL 308-19 21										120									
S88°39'16"E										120									
50.00										120									
20190221000400										120									
33										48									
1058 S Cloverdale Condominium										120									
VOL 308-19 21										120									
S88°39'16"E										120									
50.00										120									
20190221000400										120									
33										48									
1058 S Cloverdale Condominium										120									
VOL 308-19 21										120									
S88°39'16"E										120									
50.00										120									
20190221000400										120									
33										48									
1058 S Cloverdale Condominium										120									
VOL 308-19 21										120									
S88°39'16"E										120									
50.00										120									
20190221000400										120									
33										48									
1058 S Cloverdale Condominium										120									
VOL 308-19 21										120									
S88°39'16"E										120									
50.00										120									
20190221000400										120									
33										48									
1058 S Cloverdale Condominium										120									
VOL 308-19 21										120									
S88°39'16"E										120									
50.00										120									
20190221000400										120									
33										48									
1058 S Cloverdale Condominium										120									
VOL 308-19 21										120									
S88°39'16"E										120									
50.00										120									
20190221000400										120									
33										48									
1058 S Cloverdale Condominium										120									
VOL 308-19 21										120									
S88°39'16"E										120									
50.00										120									
20190221000400										120									
33										48									
1058 S Cloverdale Condominium										120									
VOL 308-19 21										120									
S88°39'16"E										120									
50.00										120									
20190221000400										120									
33										48									
1058 S Cloverdale Condominium										120									
VOL 308-19 21										120									
S88°39'16"E										120									
50.00										120									
20190221000400										120									
33										48									
1058 S Cloverdale Condominium										120									
VOL 308-19 21										120									
S88°39'16"E										120									
50.00										120									
20190221000400										120									
33										48									
1058 S Cloverdale Condominium										120									
VOL 308-19 21										120									
S88°39'16"E										120									
50.00										120									
20190221000400										120									
33										48									
1058 S Cloverdale Condominium										120									
VOL 308-19 21										120									
S88°39'16"E										120									
50.00										120									
20190221000400										120									
33										48									
1058 S Cloverdale Condominium										120									
VOL 308-19 21										120									
S88°39'16"E										120									
50.00										120									
20190221000400										120									
33										48									
1058 S Cloverdale Condominium										120									
VOL 308-19 21										120									
S88°39'16"E										120									
50.00										120									
20190221000400										120									
33										48									
1058 S Cloverdale Condominium										120									
VOL 308-19 21										120									
S88°39'16"E										120									
50.00										120									
20190221000400										120									
33										48									
1058 S Cloverdale Condominium										120									
VOL 308-19 21										120									

