

PARTIAL TRANSFER OF JURISDICTION
FOR UNDERGROUND UTILITIES
LAND DESCRIPTION

THAT PORTION OF THE SW QUARTER OF THE SW QUARTER OF SECTION 14, TOWNSHIP 24 NORTH, RANGE 4 EAST, W.M UNDER THE JURISDICTION OF THE SEATTLE DEPARTMENT OF PARKS AND RECREATION AS GRANTED TO THE CITY OF SEATTLE FOR PARK, PARKWAY AND BOULEVARD PURPOSES PURSUANT TO CHAPTER 183, SESSION LAWS OF 1913 AND CITY ORDINANCE 26273 DESCRIBED AS FOLLOWS:

COMMENCING AT A CONCRETE MONUMENT AT THE INTERSECTION OF THE CENTERLINES OF SOUTH ALASKA STREET AND 53RD AVENUE SOUTH; THENCE N 00° 45' 48" E ALONG THE CENTERLINE OF 53RD AVENUE SOUTH A DISTANCE OF 257.54 FEET TO A CONCRETE MONUMENT AT THE CENTERLINE OF VACATED LAKESIDE AVENUE SOUTH; THENCE N 27° 22' 43" W A DISTANCE OF 26.34 FEET TO THE FACE OF A CONCRETE CURB AND THE POINT OF BEGINNING;

THENCE LEAVING THE FACE OF THE CONCRETE CURB N 64° 25' 42" W A DISTANCE OF 13.96 FEET;

THENCE N 05° 43' 19" E A DISTANCE OF 39.82 FEET;

THENCE N 37° 51' 01" E A DISTANCE OF 14.06 FEET TO THE FACE OF A CONCRETE CURB AND THE BEGINNING OF A NON TANGENT 16.30 FOOT RADIUS CURVE WHICH RADIUS BEARS S 71° 26' 19" W;

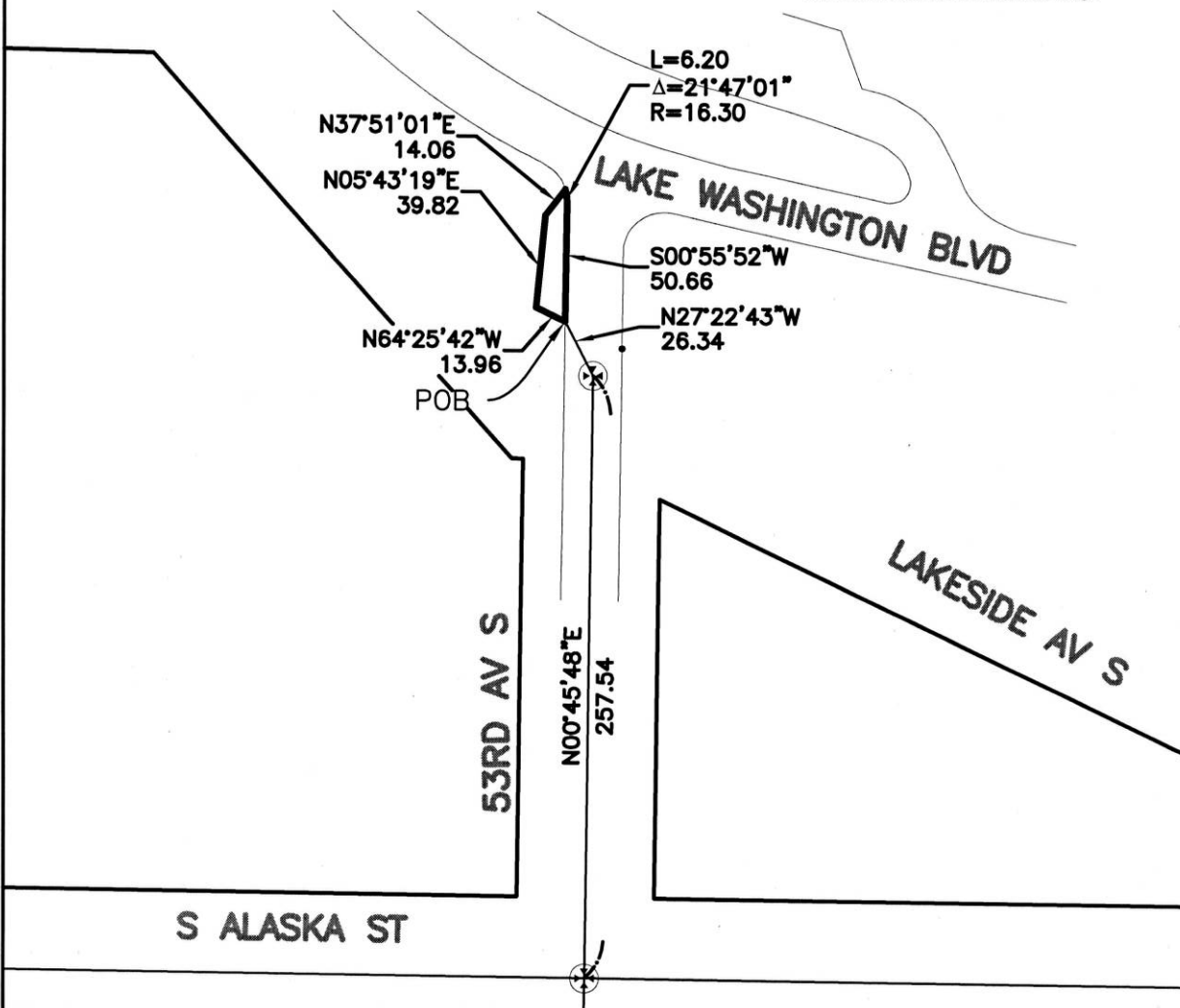
THENCE SOUTHERLY ALONG SAID CONCRETE CURB A DISTANCE OF 6.20 FEET ALONG THE ARC OF SAID CURVE THROUGH A CENTRAL ANGLE OF 21° 47' 01" TO THE END OF THE CURVE;

THENCE CONTINUING ALONG THE FACE OF SAID CONCRETE CURB S 00° 55' 52" W A DISTANCE OF 50.66 FEET TO THE POINT OF BEGINNING.

CONTAINING 531 SQ. FT., MORE OR LESS.



LAKE WASHINGTON BOULEVARD SOUTH
 SW 1/4 SW 1/4 SEC. 14, TWP. 24 N., RGE. 4 E., W.M.



SPU	
DRAWN:	MHK
CHECKED:	GMG
SCALE:	1"=80'



City of Seattle
Seattle Public Utilities

PARTIAL TRANSFER OF JURISDICTION

FOR UNDERGROUND UTILITIES

LAND DESCRIPTION

THAT PORTION OF THE SW QUARTER OF THE SW QUARTER OF SECTION 14, TOWNSHIP 24 NORTH, RANGE 4 EAST, W.M. UNDER THE JURISDICTION OF THE SEATTLE DEPARTMENT OF PARKS AND RECREATION AS GRANTED TO THE CITY OF SEATTLE FOR PARK, PARKWAY AND BOULEVARD PURPOSES PURSUANT TO CHAPTER 183, SESSION LAWS OF 1913 AND CITY ORDINANCE 26273 DESCRIBED AS FOLLOWS:

COMMENCING AT A CONCRETE MONUMENT AT THE INTERSECTION OF THE CENTERLINES OF SOUTH ALASKA STREET AND 53RD AVENUE SOUTH; THENCE N 00° 45' 48" E ALONG THE CENTERLINE OF 53RD AVENUE SOUTH A DISTANCE OF 257.54 FEET TO THE INTERSECTION WITH THE CENTERLINE OF VACATED LAKESIDE AVENUE SOUTH; THENCE N 33° 07' 12" E A DISTANCE OF 23.39 FEET TO THE FACE OF A CONCRETE CURB AND THE POINT OF BEGINNING;

THENCE LEAVING THE FACE OF CONCRETE CURB S 86° 47' 50" E A DISTANCE OF 11.92 FEET;

THENCE N 00° 48' 07" E A DISTANCE OF 16.62 FEET;

THENCE N 15° 26' 47" E A DISTANCE OF 35.68 FEET TO THE FACE OF A CONCRETE CURB AND THE BEGINNING OF A NON TANGENT 17.65 FOOT RADIUS CURVE WHICH RADIUS BEARS S 11° 59' 21" W;

THENCE WESTERLY AND SOUTHERLY ALONG THE ARC OF SAID CURVE AND ALONG SAID CONCRETE CURB THROUGH A CENTRAL ANGLE OF 106° 53' 14" A DISTANCE OF 32.93 FEET TO THE END OF THE CURVE;

THENCE CONTINUING ALONG THE FACE OF THE CONCRETE CURB S 00° 42' 37" W A DISTANCE OF 31.58 FEET TO THE POINT OF BEGINNING.

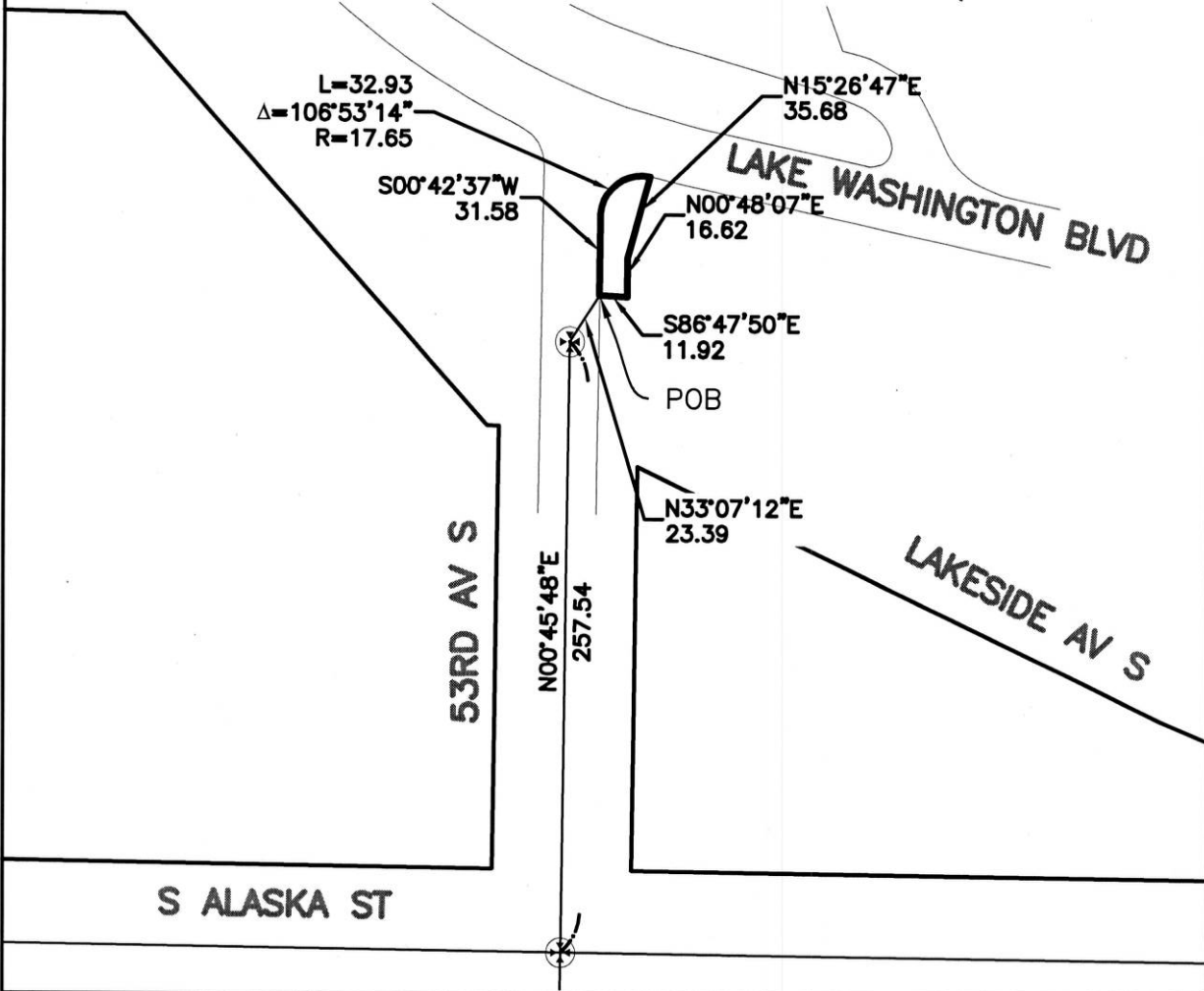
CONTAINING 705 SQ. FT., MORE OR LESS.



LAKE WASHINGTON BOULEVARD SOUTH
 SW 1/4 SW 1/4 SEC. 14, TWP. 24 N., RGE. 4 E., W.M.



12-12-12



SPU
DRAWN: MHK
CHECKED: GMG
SCALE: 1"=60'



PARTIAL TRANSFER OF JURISDICTION
FOR UNDERGROUND AND ABOVE GROUND UTILITIES
LAND DESCRIPTION

THAT PORTION OF THE SW QUARTER OF THE SW QUARTER OF SECTION 14, TOWNSHIP 24 NORTH, RANGE 4 EAST, W.M. UNDER THE JURISDICTION OF THE SEATTLE DEPARTMENT OF PARKS AND RECREATION AS GRANTED TO THE CITY OF SEATTLE FOR PARK, PARKWAY AND BOULEVARD PURPOSES PURSUANT TO CHAPTER 183, SESSION LAWS OF 1913 AND CITY ORDINANCE 26273 DESCRIBED AS FOLLOWS:

COMMENCING AT A CONCRETE MONUMENT AT THE INTERSECTION OF THE CENTERLINES OF SOUTH ALASKA STREET AND 53RD AVENUE SOUTH; THENCE N 00° 45' 48" E ALONG THE CENTERLINE OF 53RD AVENUE SOUTH A DISTANCE OF 257.54 FEET TO THE INTERSECTION WITH THE CENTERLINE OF VACATED LAKESIDE AVENUE SOUTH; THENCE S 64° 35' 02" E A DISTANCE OF 13.80 FEET TO THE FACE OF A CONCRETE CURB AND THE POINT OF BEGINNING;

THENCE LEAVING THE FACE OF CONCRETE CURB S 64° 56' 01" E A DISTANCE OF 24.29 FEET;

THENCE N 00° 22' 24" E A DISTANCE OF 34.58 FEET;

THENCE N 86° 47' 50" W A DISTANCE OF 21.94 FEET TO THE FACE OF A CONCRETE CURB;

THENCE CONTINUING ALONG THE FACE OF THE CONCRETE CURB S 00° 42' 37" W A DISTANCE OF 25.52 FEET TO THE POINT OF BEGINNING.

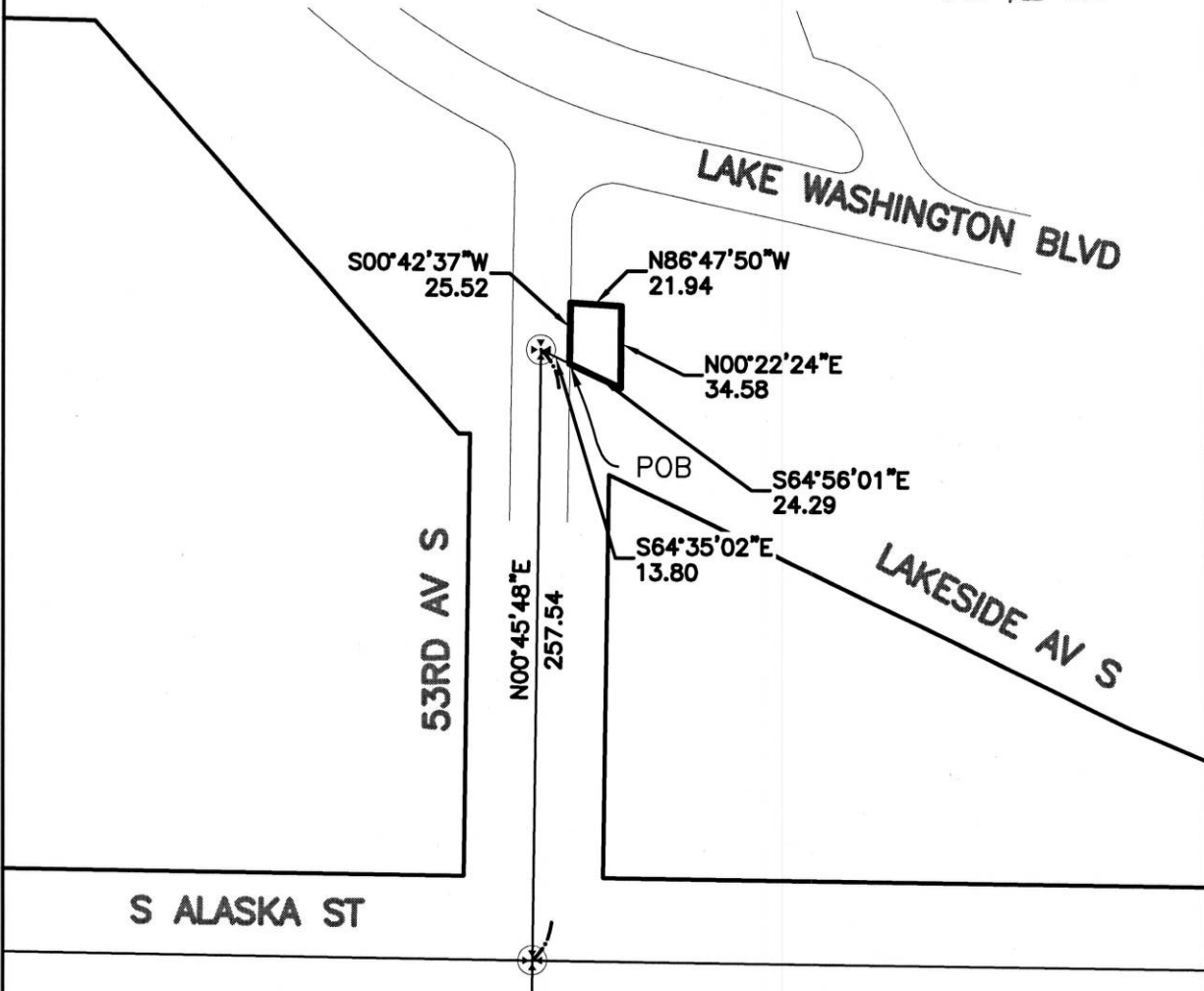
CONTAINING 661 SQ. FT., MORE OR LESS.



LAKE WASHINGTON BOULEVARD SOUTH
 SW 1/4 SW 1/4 SEC. 14, TWP. 24 N., RGE. 4 E., W.M.



12-12-12



SPU	
DRAWN:	MHK
CHECKED:	GMG
SCALE:	1"=60'



City of Seattle
Seattle Public Utilities

PARTIAL TRANSFER OF JURISDICTION
FOR UNDERGROUND UTILITIES
LAND DESCRIPTION

THAT PORTION OF THE SW QUARTER OF THE SW QUARTER OF SECTION 14, TOWNSHIP 24 NORTH, RANGE 4 EAST, W.M., UNDER THE JURISDICTION OF THE SEATTLE DEPARTMENT OF PARKS AND RECREATION AS GRANTED TO THE CITY OF SEATTLE FOR PARK, PARKWAY AND BOULEVARD PURPOSES PURSUANT TO CHAPTER 183, SESSION LAWS OF 1913 AND CITY ORDINANCE 26273 DESCRIBED AS FOLLOWS:

COMMENCING AT A CONCRETE MONUMENT IN A CASE AT THE INTERSECTION OF THE CENTERLINES OF 51ST AVENUE SOUTH AND SOUTH SNOQUALMIE STREET; THENCE S 89° 15' 07" E ALONG THE CENTERLINE OF SOUTH SNOQUALMIE STREET A DISTANCE OF 310.03 FEET TO A CONCRETE MONUMENT AT THE INTERSECTION OF THE CENTERLINE OF 52ND AVENUE SOUTH; THENCE S 88° 54' 28" E A DISTANCE OF 118.99 FEET TO THE POINT OF BEGINNING;

THENCE S 08° 37' 36" E A DISTANCE OF 16.41 FEET;

THENCE S 43° 16' 27" E A DISTANCE OF 10.77 FEET;

THENCE N 55° 36' 34" E A DISTANCE OF 8.29 FEET;

THENCE N 12° 19' 37" W A DISTANCE OF 26.28 FEET;

THENCE N 30° 47' 10" W A DISTANCE OF 17.90 FEET;

THENCE S 82° 07' 20" E A DISTANCE OF 37.97 FEET;

THENCE N 53° 54' 47" E A DISTANCE OF 5.17 FEET TO THE FACE OF A CONCRETE CURB;

THENCE ALONG THE FACE OF THE CONCRETE CURB N 36° 14' 06" W A DISTANCE OF 12.01 FEET;

THENCE LEAVING THE FACE OF CONCRETE CURB N 82° 22' 45" W A DISTANCE OF 49.07 FEET; THENCE S 37° 21' 17" W A DISTANCE OF 7.77 FEET;

THENCE S 29° 33' 00" E A DISTANCE OF 33.95 FEET TO THE POINT OF BEGINNING.

CONTAINING 1,274 SQ. FT., MORE OR LESS.

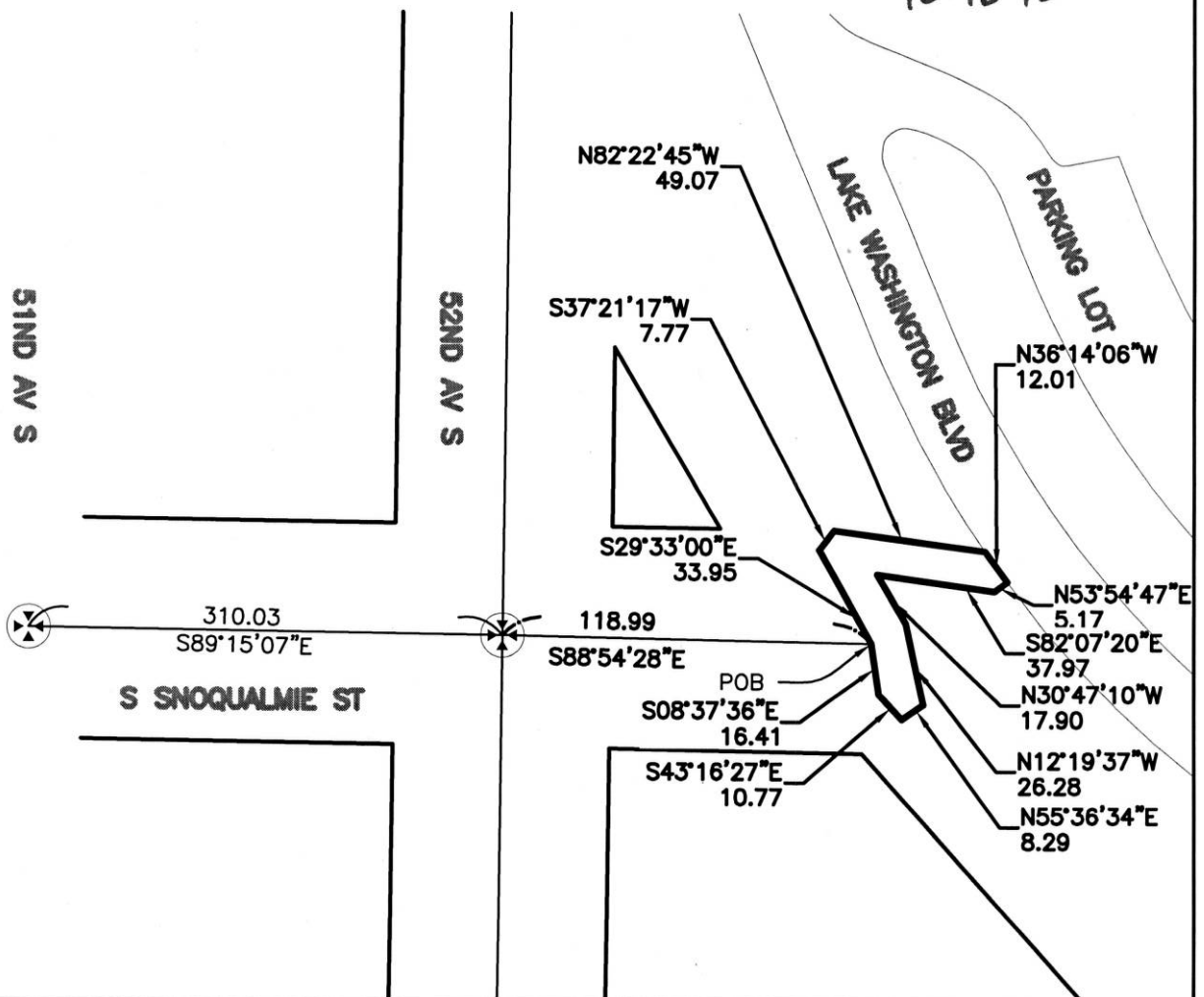


12-12-12

LAKE WASHINGTON BOULEVARD SOUTH
 SW 1/4 SW 1/4 SEC. 14, TWP. 24 N., RGE. 4 E., W.M.



12-12-12



SPU
DRAWN: MHK
CHECKED: GMG
SCALE: 1"=60'



PARTIAL TRANSFER OF JURISDICTION
FOR UNDERGROUND UTILITIES
LAND DESCRIPTION

THAT PORTION OF THE SW QUARTER OF THE SW QUARTER OF SECTION 14, TOWNSHIP 24 NORTH, RANGE 4 EAST, W.M., UNDER THE JURISDICTION OF THE SEATTLE DEPARTMENT OF PARKS AND RECREATION AS GRANTED TO THE CITY OF SEATTLE FOR PARK, PARKWAY AND BOULEVARD PURPOSES PURSUANT TO CHAPTER 183, SESSION LAWS OF 1913 DESCRIBED AS FOLLOWS:

COMMENCING AT A CONCRETE MONUMENT AT THE INTERSECTION OF THE CENTERLINES OF SOUTH ALASKA STREET AND 53RD AVENUE SOUTH; THENCE N 00° 45' 48" E ALONG THE CENTERLINE OF 53RD AVENUE SOUTH A DISTANCE OF 257.54 FEET TO A CONCRETE MONUMENT AT THE INTERSECTION OF THE CENTERLINE OF VACATED LAKESIDE AVENUE SOUTH; THENCE N 04° 09' 03" E A DISTANCE OF 105.66 FEET TO THE FACE OF A CONCRETE CURB AND THE POINT OF BEGINNING;

THENCE LEAVING THE FACE OF CURB N 37° 25' 59" E A DISTANCE OF 12.36 FEET;

THENCE N 20° 21' 31" W A DISTANCE OF 17.50 FEET;

THENCE N 54° 22' 32" W A DISTANCE OF 75.20 FEET;

THENCE N 47° 59' 27" W A DISTANCE OF 69.16 FEET;

THENCE S 54° 02' 07" W A DISTANCE OF 26.50 FEET TO THE FACE OF A CONCRETE CURB;

THENCE CONTINUING ALONG THE FACE OF THE CONCRETE CURB N 35° 28' 09" W A DISTANCE OF 11.94 FEET;

THENCE LEAVING THE FACE OF CONCRETE CURB N 53° 55' 07" E A DISTANCE OF 61.61 FEET;

THENCE S 53° 58' 42" E A DISTANCE OF 106.61 FEET;

THENCE S 73° 24' 52" E A DISTANCE OF 119.15 FEET;

THENCE S 15° 19' 20" W A DISTANCE OF 48.19 FEET;

THENCE S 59° 24' 25" W A DISTANCE OF 42.11 FEET TO THE FACE OF A
CONCRETE CURB AND THE BEGINNING OF A 429.82 FOOT RADIUS NON
TANGENT CURVE WHICH RADIUS BEARS N 11° 50' 47" E;

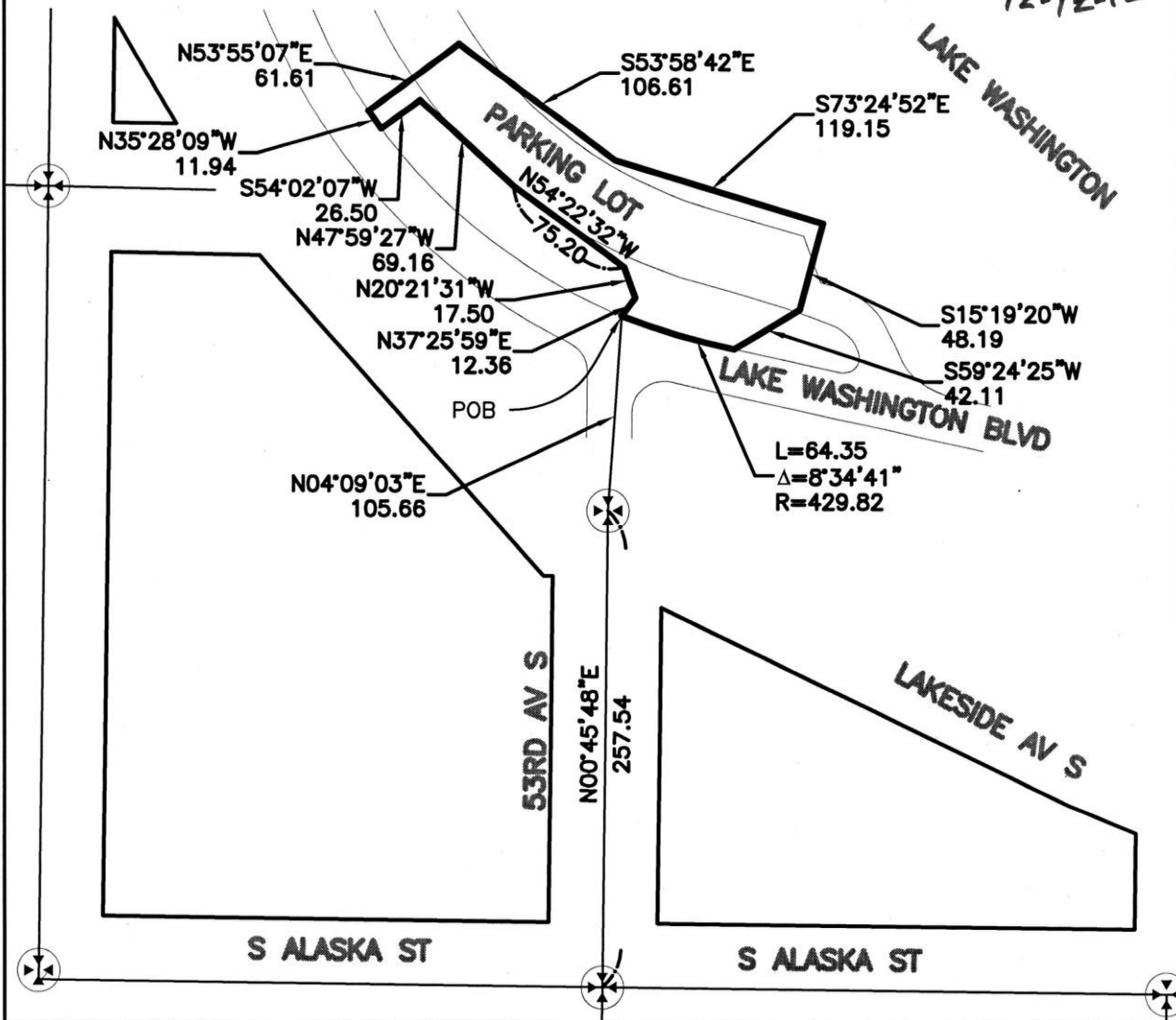
THENCE WESTERLY ALONG THE ARC OF SAID CURVE THROUGH A CENTRAL
ANGLE OF 08° 34' 41" A DISTANCE OF 64.35 FEET TO THE POINT OF BEGINNING.

CONTAINING 13,672 SQ. FT., MORE OR LESS.



12-12-12

LAKE WASHINGTON BOULEVARD SOUTH
 SW 1/4 SW 1/4 SEC. 14, TWP. 24 N., RGE. 4 E., W.M.



SPU	
DRAWN:	MHK
CHECKED:	GMG
SCALE:	1"=100'

