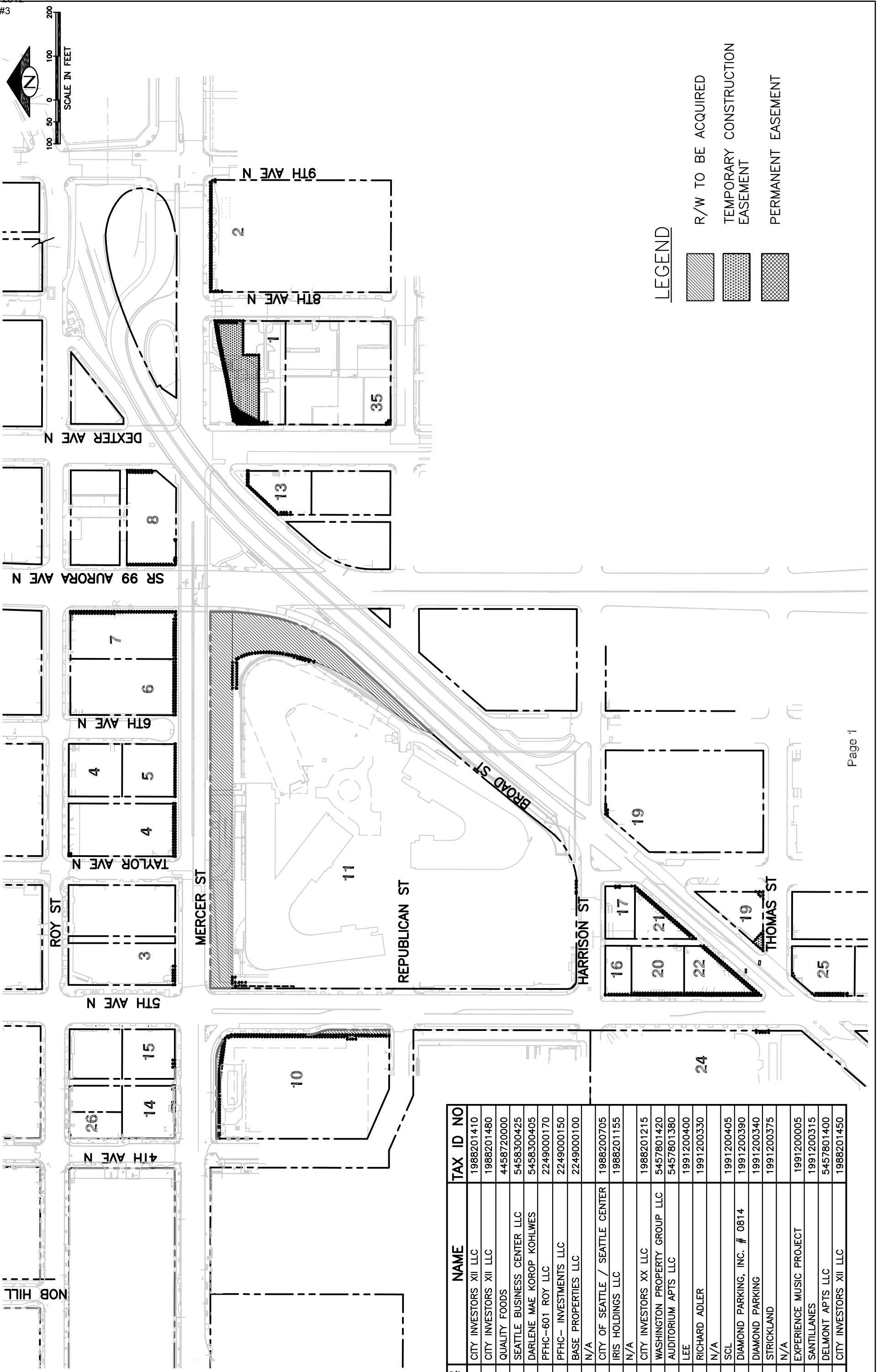
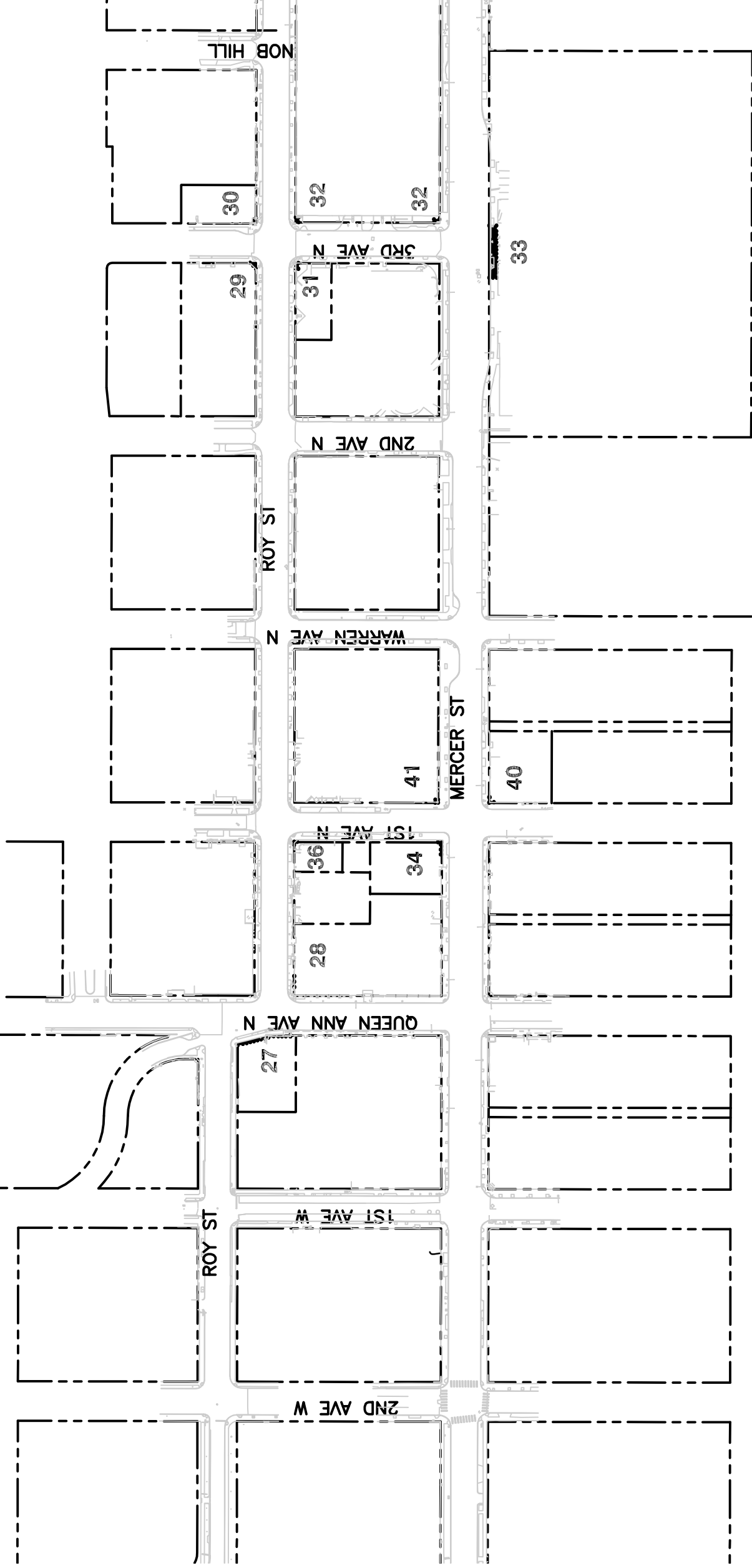


**MERCER CORRIDOR PROJECT**  
 RIGHT OF WAY & EASEMENT / PROPERTIES AFFECTED



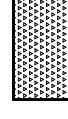
#	NAME	TAX ID NO
1	CITY INVESTORS XII LLC	1988201410
2	CITY INVESTORS XII LLC	1988201480
3	QUALITY FOODS	4458720000
4	SEATTLE BUSINESS CENTER LLC	5458300425
5	DARLENE MAE KOROP KOHLWES	5458300405
6	PFHC-601 ROY LLC	2249000170
7	PFHC- INVESTMENTS LLC	2249000150
8	BASE PROPERTIES LLC	2249000100
9	N/A	
10	CITY OF SEATTLE / SEATTLE CENTER	1988200705
11	IRIS HOLDINGS LLC	1988201155
12	N/A	
13	CITY INVESTORS XX LLC	1988201215
14	WASHINGTON PROPERTY GROUP LLC	5457801420
15	AUDITORIUM APTS LLC	5457801380
16	LEE	1991200400
17	RICHARD ADLER	1991200330
18	N/A	
19	SCL	1991200405
20	DIAMOND PARKING, INC. # 0814	1991200390
21	DIAMOND PARKING	1991200340
22	STRICKLAND	1991200375
23	N/A	
24	EXPERIENCE MUSIC PROJECT	1991200005
25	SANTILLANES	1991200315
26	DELMONT APTS LLC	5457801400
35	CITY INVESTORS XII LLC	1988201450

**MERCER CORRIDOR PROJECT**  
 RIGHT OF WAY & EASEMENT / PROPERTIES AFFECTED



#	NAME	TAX ID NO
27	ARNOLD WILLIAM	3879900425
28	MARQUEEN ASSOC. LLC	7011000000
29	JOSEF STANZL	8732380000
30	MAXWEL HOTEL LLC	5457800435
31	SEATTLE OPERA	5457800275
32	SEATTLE CITY OF CEN	5457800310
33	SEATTLE CITY OF CEN	1988200440
34	DIAMOND PARKING INC	5457300010
36	SAINT PAUL'S EPISCOPAL CHURCH	5457300005
40	CONKLIN CAROLYN	1988200240
41	BENAROYA CAPITAL CO LLC/ HBC QUEEN ANNE LLC	5161000000

**LEGEND**



TEMPORARY CONSTRUCTION  
 EASEMENT

