

# Ordinance No. 78386

AN ORDINANCE relating to the acquisition by condemnation of land and other property in the southwest one-quarter of the northeast one-quarter of Section 4, Township 25 North, Range 4 East, W.M., for Park and Playground purposes, and providing that the entire cost of such acquisition shall be paid by assessment on the property specially benefited, or from such funds as may be provided by law or by both such assessment and from such funds.

*10/25/49 - passed*

## Council Bill No. 69715

INTRODUCED: OCT 24 1949	BY: <del>STREETS &amp; SEWERS</del> <i>Parks and Public Grounds</i>
REFERRED: OCT 24 1949	<del>STREETS &amp; SEWERS</del> <b>FINANCE</b> <i>Parks and Public Grounds</i>
REFERRED:	
REPORTED: OCT 31 1949	VETO:
SECOND READING: OCT 31 1949	PUBLISHED:
THIRD READING: OCT 31 1949	VETO SUSTAINED:
SIGNED: OCT 31 1949	PASSED OVER VETO:
PRESENTED TO MAYOR: NOV 1 - 1949	APPROVED: NOV 2 - 1949
FILED: NOV 2 - 1949	PUBLISHED: NOV 5 - 1949
ENGROSSED:	BY: <i>m. d.</i> ✓
VOL. <i>R-2</i> PAGE <i>11</i>	
COMPARED BY:	AND

*Park  
Coun. Council*

*E. 80th - 27th N.E.  
and 25th - 27th N.E.*

*0.78604 - \$50,000 to negotiate purchase  
0.79175 - accept. Awards  
0.87905 - Grants permission to Park Highway  
Develop. Co. to improve 28th N.E. & 29th N.E.  
from E 80th to approx 30th so through*

*M.S.*

Ordinance No. 78386

AN ORDINANCE relating to the so-  
quisition by condemnation of land  
and other property in the south-  
west one-quarter of the northeast  
one-quarter of Section 4, Township  
25 North, Range 4 East, W.M., for  
Park and Playground purposes, and  
providing that the entire cost of  
such acquisition shall be paid by  
assessment on the property specially  
benefited, or from such funds as  
may be provided by law or by both,  
such assessment and from such funds.

*1745149-100000*  
Council Bill No. 69715

INTROUCED: OCT 24 1949	BY: <b>BRETT &amp; SEMERS</b> <i>Grades and Public Grounds</i>
REFERRED: OCT 24 1949	<b>FINANCING</b> <i>Grades and Public Grounds</i>
REFERRED:	
REPORTED: OCT 31 1949	VETO:
SECOND READING: OCT 31 1949	PUBLISHED:
THIRD READING: OCT 31 1949	VETO SUSTAINED:
SIGNED OCT 31 1949	PASSED OVER VETO:
PRESENTED TO MAYOR: NOV 1 - 1949	APPROVED: NOV 2 - 1949
FILED: NOV 2 - 1949	PUBLISHED: NOV 5 - 1949
ENGROSSED: VOL <i>F-2</i> PAGE <i>11</i>	BY: <i>m. B. ✓</i>
COMPARED BY:	

- 0. 78604 - \$50,000 to negotiate purchase
- 0 79175 - accept. Awards
- 0 87905 - Grants permission to Park Highlands Develop. Co. to improve 28th NE & 29th NE from E 80th to approx 301' so. thereof.

E. 80th  
and 25th - 27th N.E.  
3

Park  
Cort Counsel

Park Dept. Minutes  
Sept. 15, 1955  
Name changed to  
Waldo J. Dahl Playfield.

ORDINANCE NO. 78386

AN ORDINANCE relating to the acquisition by condemnation of land and other property in the southwest one-quarter of the northeast one-quarter of Section 4, Township 25 North, Range 4 East, W.M., for Park and Playground purposes, and providing that the entire cost of such acquisition shall be paid by assessment on the property specially benefited, or from such funds as may be provided by law or by both such assessment and from such funds.

BE IT ORDAINED BY THE CITY OF SEATTLE AS FOLLOWS:

Section 1. That public necessity and convenience demand that the following described property, to-wit:

All of Tracts 3 to 10 both inclusive, Oscar's Addition, as recorded in Volume 26 of King County Plats at Page 32, also

All of Blocks 2, 3, 4 and 5; all of Lots 1 to 12, both inclusive, and all of Lots 37 to 48, both inclusive, Block 7; all of Lots 1 to 12, both inclusive, and Lots 37 to 48, both inclusive, Block 8; all of the West 132 feet of Block 9; all as platted in Manor's University Addition as recorded in Volume 15 of King County Plats at page 58; also

All those portions of the West 165 feet of the east one-half of the southwest one-quarter of the northeast one-quarter of Section 4, Township 25 North, Range 4 East, W.M., lying north of the south line of Lot 37, Block 8, Manor's University Addition produced easterly, except streets

together with all rights, privileges and other property pertaining thereto, be and the same are hereby condemned, appropriated and taken for a public use, namely, for Park and Playground purposes, said lands, rights, privileges and other property to be so appropriated and taken only after just compensation has been made or paid into Court for the owners thereof, in the manner provided by law.

Section 2. That the entire cost of such improvement shall be paid by special assessments upon property specially benefited, or from such funds as may be provided by law or by both such special assessment and from such funds.

Section 3. That the Corporation Counsel is hereby authorized and directed to begin and prosecute the actions and proceedings, in the manner provided by law, necessary to carry out the provisions of this ordinance.

(To be used for all Ordinances except Emergency.)

Section 4. This ordinance shall take effect and be in force thirty days from and after its passage and approval, if approved by the Mayor; otherwise it shall take effect at the time it shall become a law under the provisions of the city charter.

Passed the City Council the 31 day of October, 1949, and signed by me in open session in authentication of its passage this 31 day of October, 1949.

*David Linn*

President of the City Council.

Approved by me this 7 day of November, 1949.

*W. T. ...*

Mayor.

Filed by me this 7 day of November, 1949.

Attest: *A. Thomas*  
City Comptroller and Ex-Officio City Clerk.

By: *John B. Keller*  
Deputy Clerk.

City Comptroller and Ex-Officio City Clerk.

By: \_\_\_\_\_  
Deputy Clerk.

(SEAL)

Published NOV 5 - 1949

THE CITY OF SEATTLE  
DEPARTMENT OF ENGINEERING  
R. W. FINKE, CITY ENGINEER  
MEMBER, BOARD OF PUBLIC WORKS

CORPORATION COUNSEL

RECEIVED  
OCT 24 1949

ASSIGNED TO \_\_\_\_\_

In Re.

October 21, 1949.

Mr. A. C. Van Soelen,  
Corporation Counsel  
Seattle, Washington

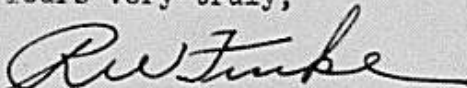
Dear Sir:

Complying with the request of the City Council we have prepared a Council Bill providing for the condemnation of the property required for the Ravenna Playfield.

In accordance with your verbal request we are transmitting this Council Bill to you for your approval.

If this Bill is satisfactory will you please transmit it to the City Council for introduction Monday, October 24th.

Yours very truly,



R. W. FINKE,  
City Engineer

*RF*  
PNR:meb

*Seattle 10/24/49.*

*A.K. est to Jan*

*A. C. Van Soelen  
Corp. Counsel*

October 21, 1949.

Mr. A. C. Van Soelen,  
Corporation Counsel  
Seattle, Washington


Dear Sir:

Complying with the request of the City Council we have prepared a Council Bill providing for the condemnation of the property required for the Ravenna Playfield.

In accordance with your verbal request we are transmitting this Council Bill to you for your approval.

If this Bill is satisfactory will you please transmit it to the City Council for introduction Monday, October 24th.

Yours very truly,

  
R. W. FINKE,  
City Engineer

PNR:meh

October 21, 1949.

Mr. A. C. Van Soelen,  
Corporation Counsel  
Seattle, Washington


Dear Sir:

Complying with the request of the City Council we have prepared a Council Bill providing for the condemnation of the property required for the Ravenna Playfield.

In accordance with your verbal request we are transmitting this Council Bill to you for your approval.

If this Bill is satisfactory will you please transmit it to the City Council for introduction Monday, October 24th.

Yours very truly,

  
R. W. FINKE,  
City Engineer

PNR:mcb

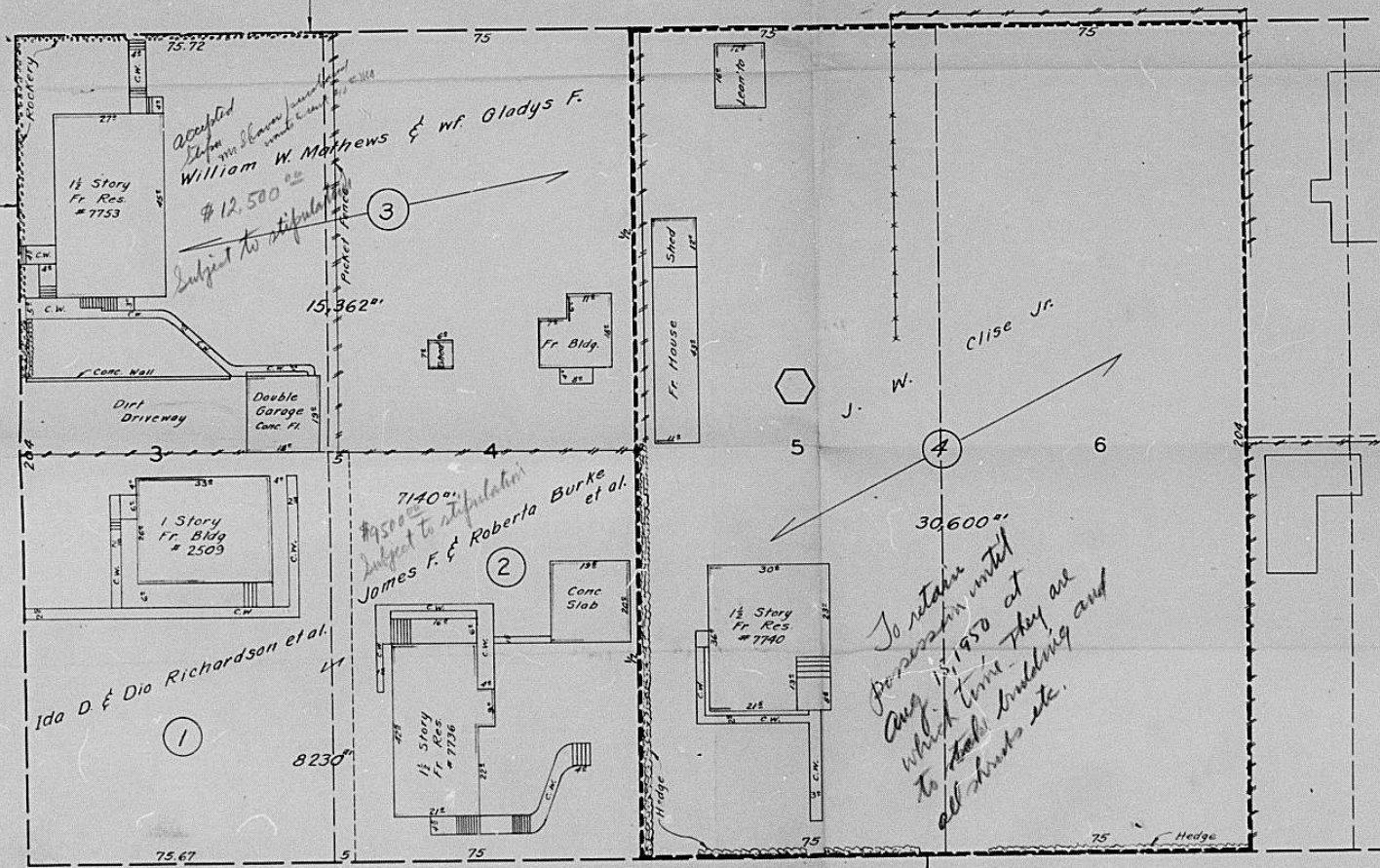


OSCAR'S ADD. VOL. 26-32

26TH AVE. N.E.

25TH AVE. N.E.

E. BOTH ST.



THE CITY OF SEATTLE  
DEPARTMENT OF ENGINEERING

CONDEMNATION FOR PARK AND PLAYGROUND  
TRACT 3, OSCAR'S ADDITION ET AL.

TOPOGRAPHY

ORDINANCE No. 78386  
5 Sheets  
SCALE 1 INCH = 20 FEET

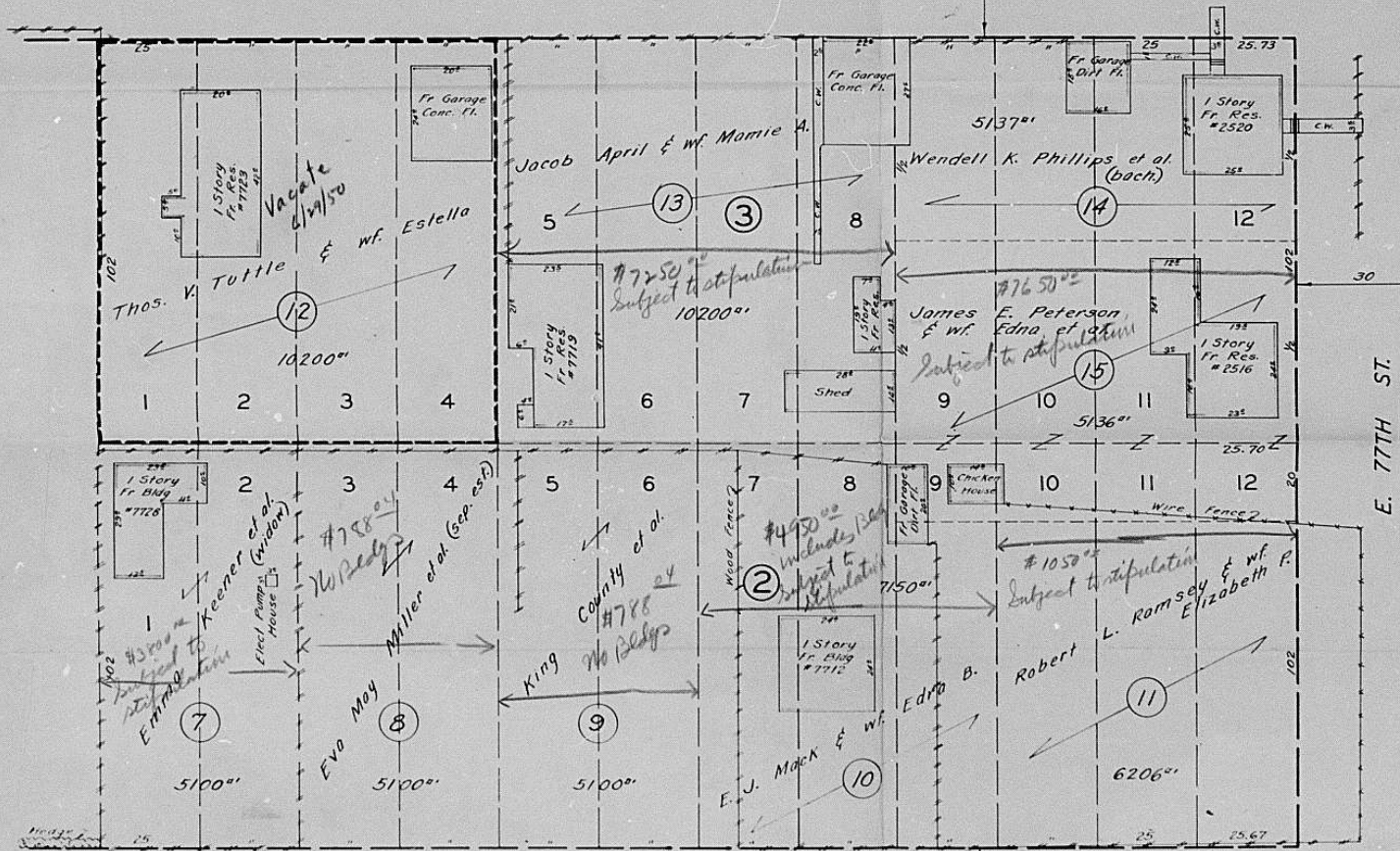
APPROVED NOV. 2 1949  
Sheet 1  
JUNE 1950

Made by <u>B. F. FARR</u> 6/5/50	Approved by <u>William A. Palmer</u> 6/5/50	1949
Traced by _____		19
Checked by <u>Stark</u> 6-8-50		19

772-137

MANOR'S UNIVERSITY ADD. VOL. 15-58

26TH AVE. N.E.



25TH AVE. N.E.

THE CITY OF SEATTLE  
 DEPARTMENT OF ENGINEERING  
 CONDEMNATION FOR PARK AND PLAYGROUND  
 TRACT 3, OSCAR'S ADDITION ET AL

TOPOGRAPHY

ORDINANCE NO 7889 APPROVED NOV 2 1949  
 5 Sheets Sheet 2  
 SCALE 1 INCH = 20 FEET JUNE 1950

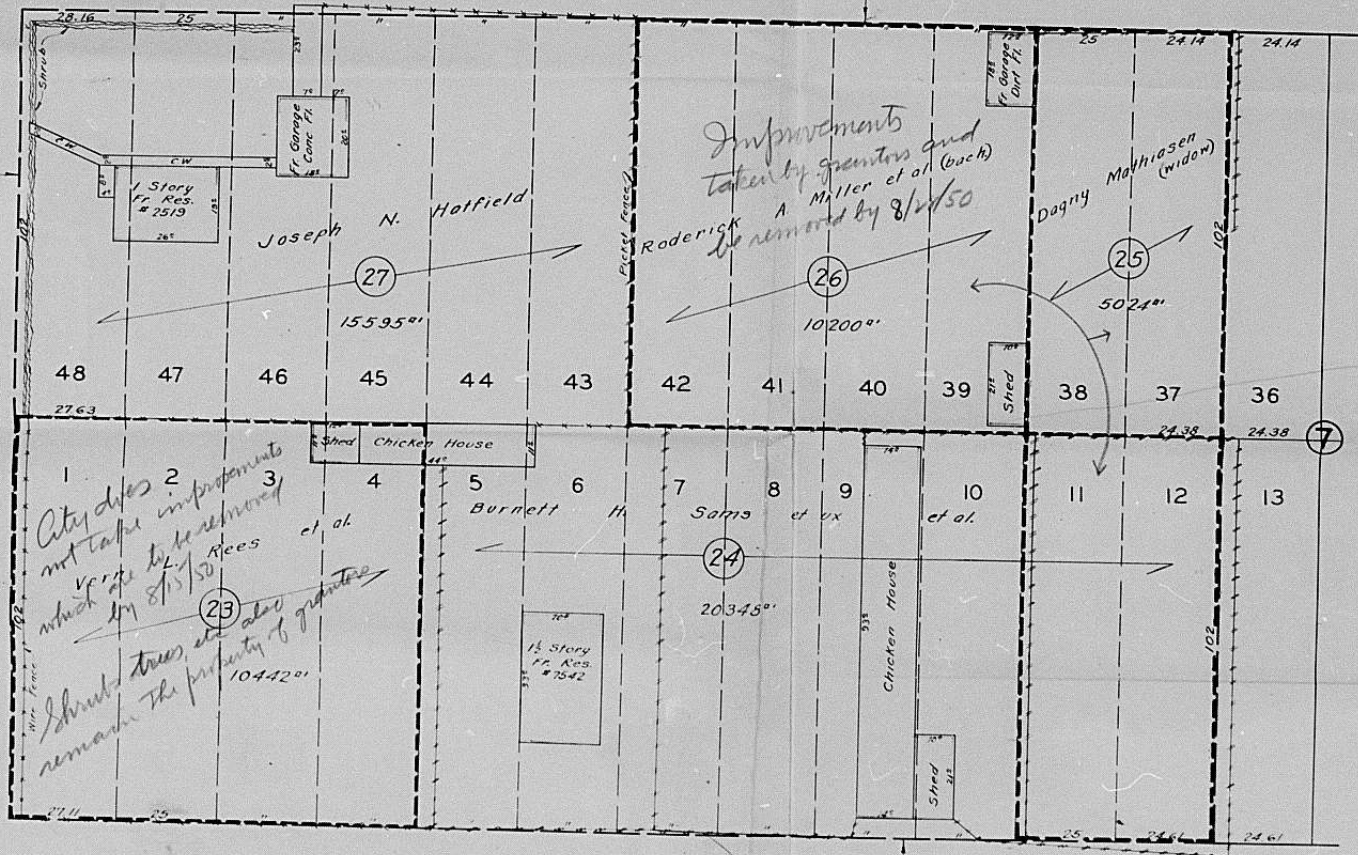
Made by	D. F. LARK 6/1/50	Approved by	William M. ...
Drawn by			
Checked by	J. ...		

772-137

MANOR'S UNIVERSITY ADD. VOL. 15-58

26TH AVE. N.E.

E. 77TH ST.



1  
2  
3  
4  
5  
6  
7  
8  
9  
10  
11  
12  
13

City does not take improvements which are to be removed by 8/1/50. Shrubs, trees, etc. also remain the property of grantee.

Improvements taken by grantor and Roderick A. Miller et al. (back) to be removed by 8/1/50.

Dagny Mathiasen (widow)

Joseph N. Hatfield

Shed Chicken House

Shed Chicken House

Shed

Shed

25TH AVE. N.E.

THE CITY OF SEATTLE  
DEPARTMENT OF ENGINEERING

CONDEMNATION FOR PARK AND PLAYGROUND  
TRACT 3, OSCAR'S ADDITION ET AL.

TOPOGRAPHY

ORDINANCE NO. 75386

APPROVED NOV. 2, 1949

5 SHEETS

SHEET 3

SCALE 1 INCH = 20 FEET

JUNE, 1950

Made by *W. J. ...*  
 Checked by *Spark ...*  
 Approved by *William ...*

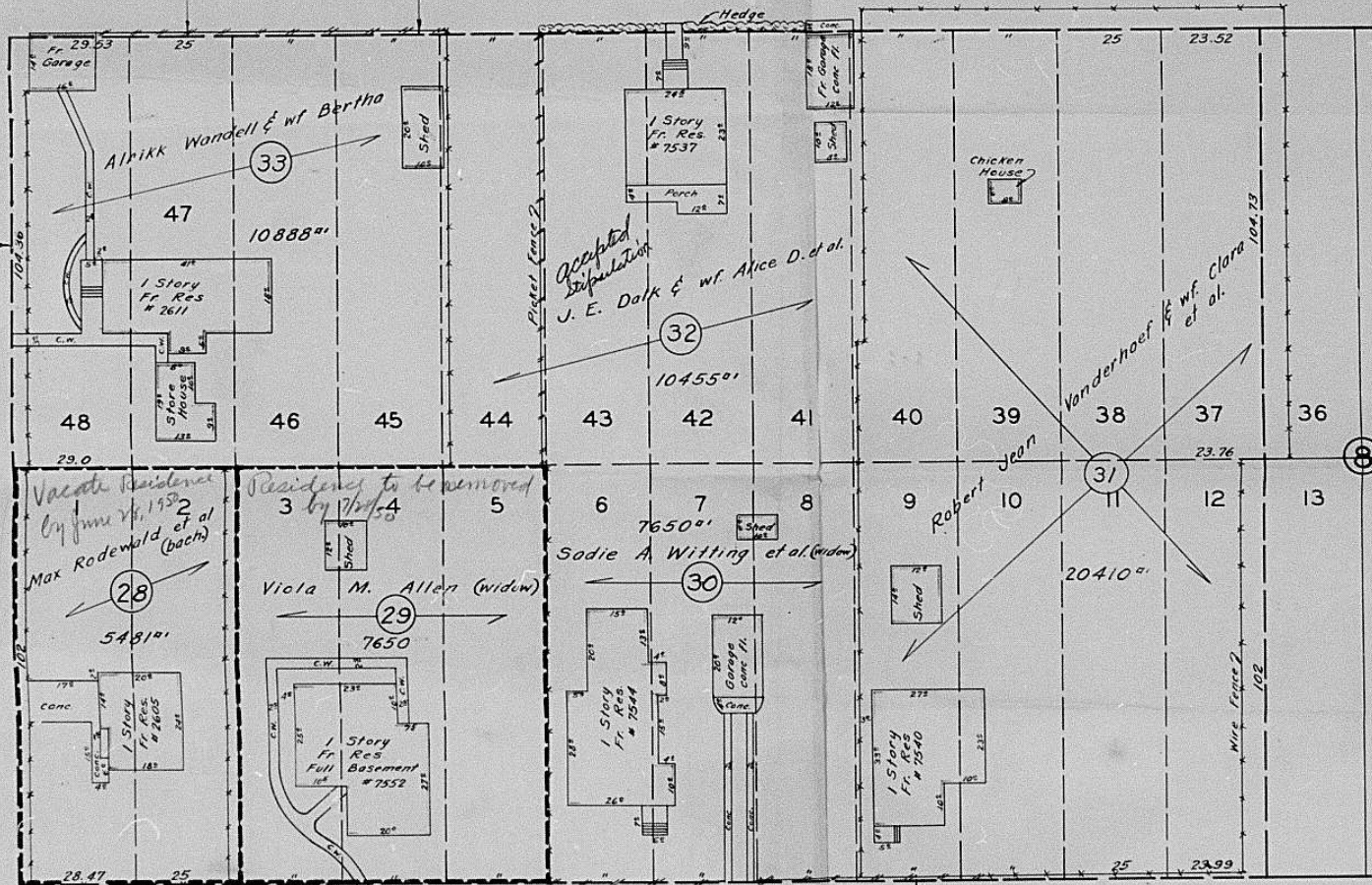
772-137

MANORS UNIVERSITY ADD VOL. 15-58

27TH AVE. N. E.

26TH AVE. N. E.

E. 77TH ST



THE CITY OF SEATTLE  
DEPARTMENT OF ENGINEERING

CONDEMNATION FOR PARK AND PLAYGROUND

TRACT 3, OSCAR'S ADDITION ET AL.

TOPOGRAPHY

ORDINANCE No. 78386

APPROVED Nov. 2 1949

5 Sheets

Sheet 4

SCALE: 1 INCH = 20 FEET

JUNE 1950

Made by <i>E. F. FARR</i> 6/5/50	Approved by <i>William A. Nelson</i> 6/8	185
Traced by		19
Checked by <i>Stark</i> 6/8/50		19

772-137

OSCAR'S ADD. VOL. 26-32

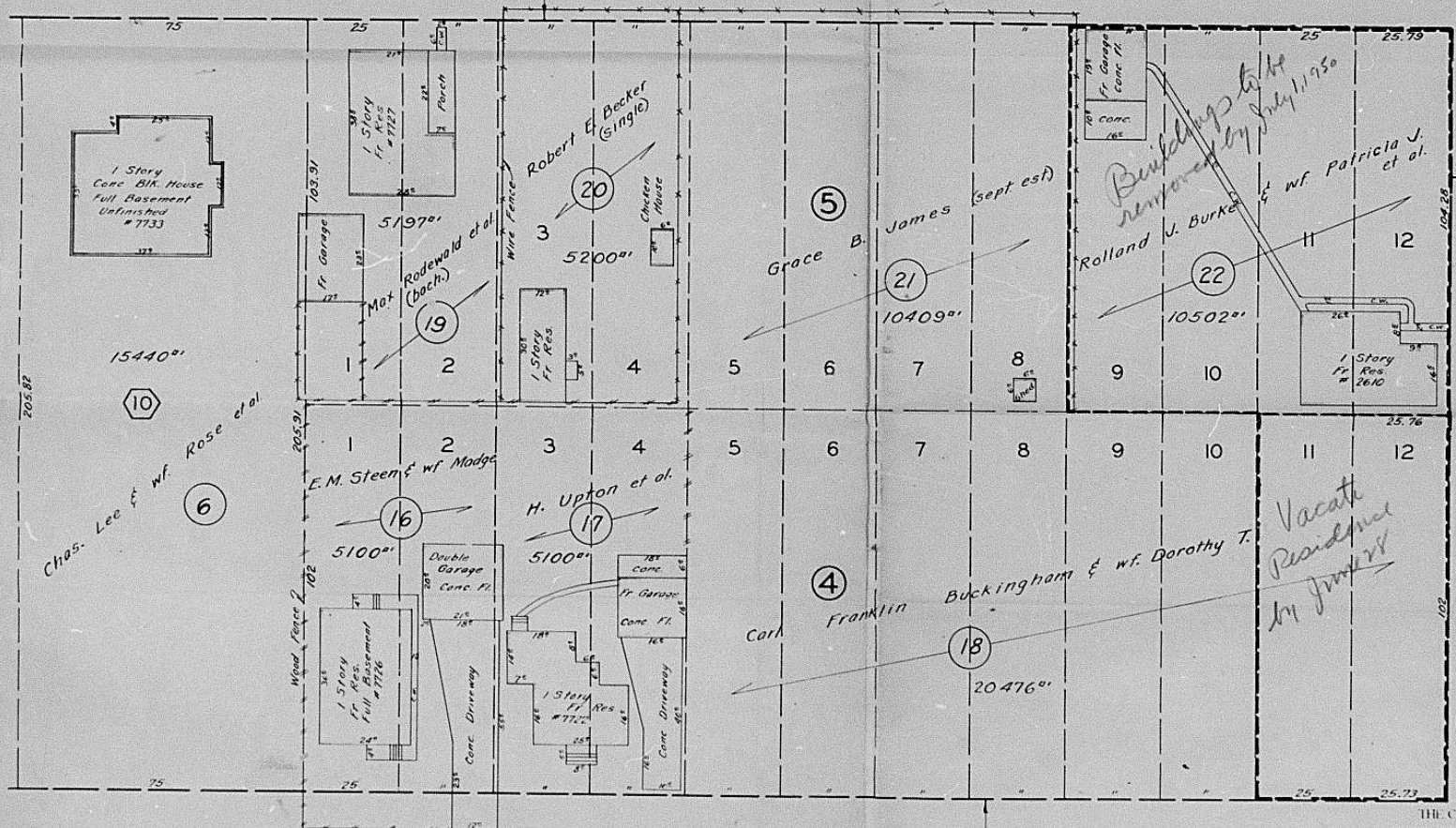
MANOR'S UNIVERSITY ADD. VOL. 15-58

East Margin

27TH AVE. N.E.

26TH AVE. N.E.

E. 77TH ST.



15440"  
 10  
 Chas. Lee & wf. Rose et al.  
 6

Building to be removed by July 1, 1950  
 Rolland U. Burke & wf. Patricia U. et al.

Vacate Residence by January

THE CITY OF SEATTLE  
 DEPARTMENT OF ENGINEERING

CONDEMNATION FOR PARK AND PLAYGROUND

TRACT 3, OSCAR'S ADDITION ET AL

TCPOGRAPHY

ORDINANCE NO. 78386

APPROVED NOV. 2, 1949

5 Sheets

Sheet 5

SCALE 1" EQUALS 20 FEET

JUNE 1950

772-137

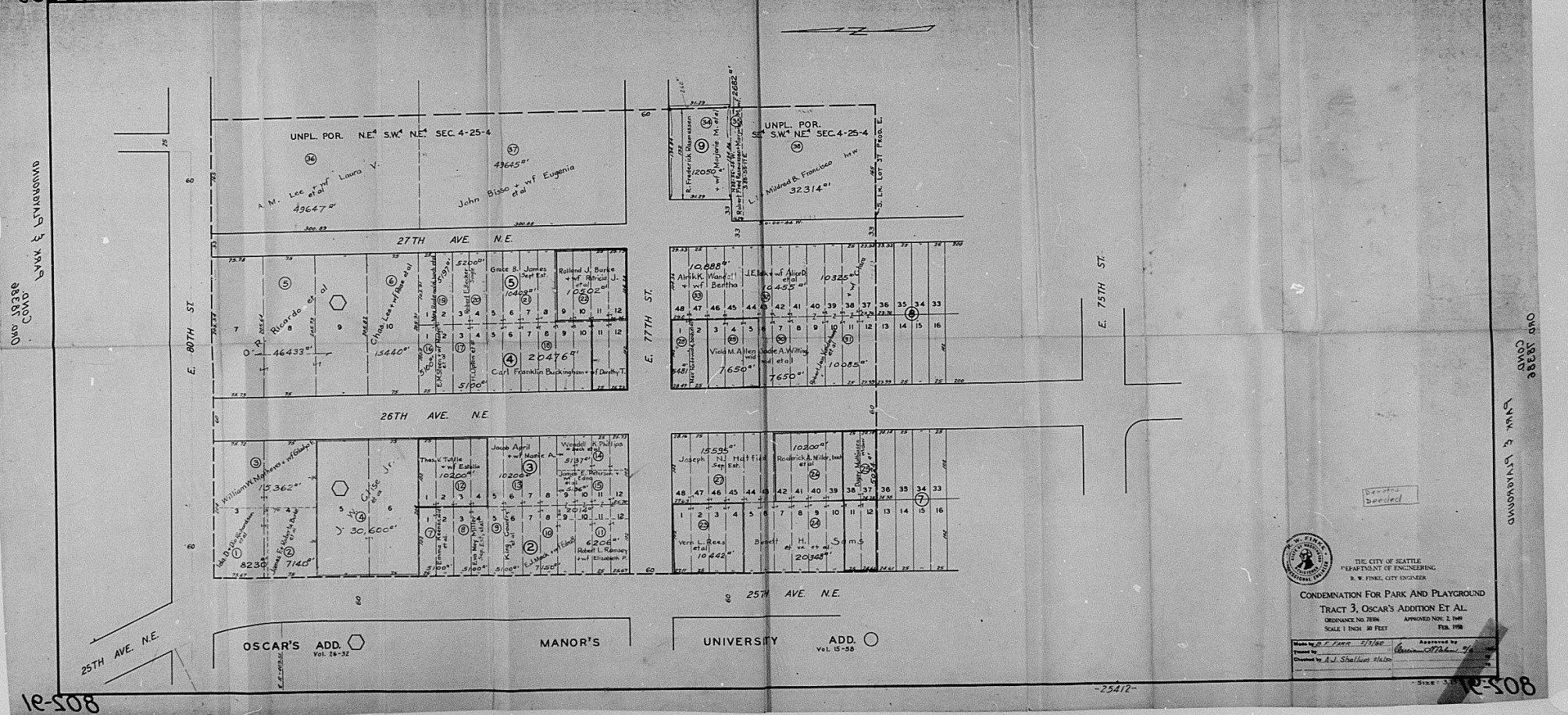
Made by	Checked by	Approved by
		<i>William J. ...</i>

805-21

805-21

OWN 39388 COND. BY W & BURNSHAM

OWN 39388 COND. BY W & BURNSHAM



THE CITY OF SEATTLE  
 DEPARTMENT OF ENGINEERING  
 R. W. FINEK, CITY ENGINEER

CONDEMNATION FOR PARK AND PLAYGROUND  
 TRACT 3, OSCAR'S ADDITION ET AL.  
 ORDINANCE NO. 78196 APPROVED NOV. 2, 1960  
 SCALE 1 INCH = 30 FEET FEB. 1962

Made by E. F. FINEK 2/1/62 Checked by A. J. SHALLENBARGER  
 Approved by Robert J. [Signature]  
 Title City Engineer

Size 3 1/2 x 5 1/2

1E-508

1E-508

-25412-

905-21

905-21

OWN 3388 COND PARK & PLAYGROUND

OWN 3388 COND PARK & PLAYGROUND



25TH AVE. N.E.

OSCAR'S ADD. Vol. 16-32

MANOR'S

UNIVERSITY

ADD. Vol. 15-58



THE CITY OF SEATTLE  
 DEPARTMENT OF ENGINEERING  
 R. W. FINK, CITY ENGINEER

CONDEMNATION FOR PARK AND PLAYGROUND  
 TRACT 3, OSCAR'S ADDITION ET AL.

ORDINANCE NO. 2746 APPROVED NOV. 2, 1949  
 SCALE: 1" = 30' FEET FEB. 1950

Drawn by: *D. L. Evans* 1/16/50  
 Checked by: *A. J. Shelton* 2/16/50  
 Approved by: *R. W. Fink* 2/6/50

12-508

-25412-

12-508