

UNIVERSITY LAKE SHORE PL.

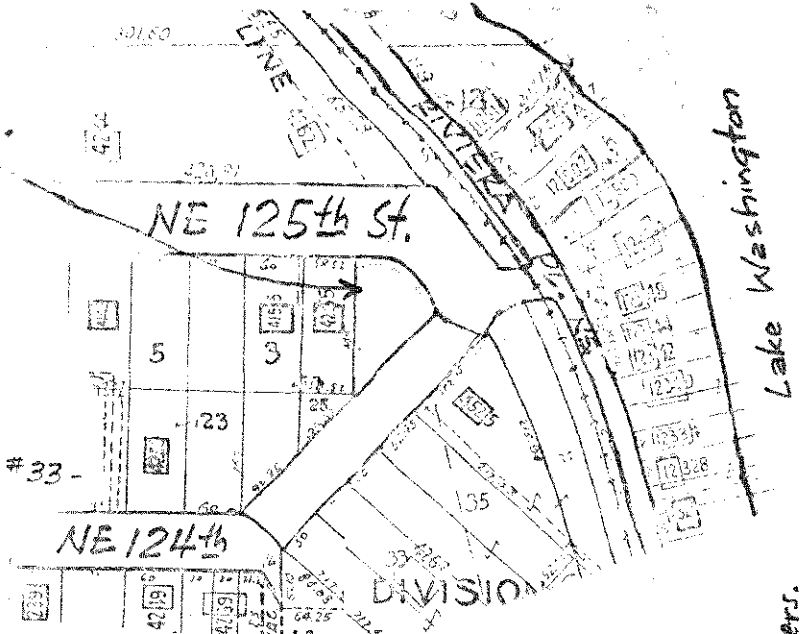
6,420 sq. ft.

Jurisd. by Annex. 1954

Trees, overgrown with weeds

Name taken from subdivision which was platted in 1910 by Amer. Invest. & Improv. Co.; H.L. Hillman and D.H. Lee.

(County name had been "Riviera Pl": #33 - remained undeveloped.)



Lake Washington

31ST AV. NE

NE 83RD

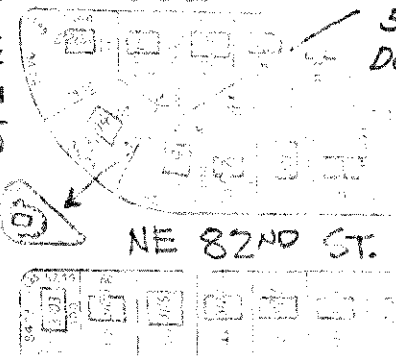
WEDGWOOD SQUARE

5,200 sq. ft.

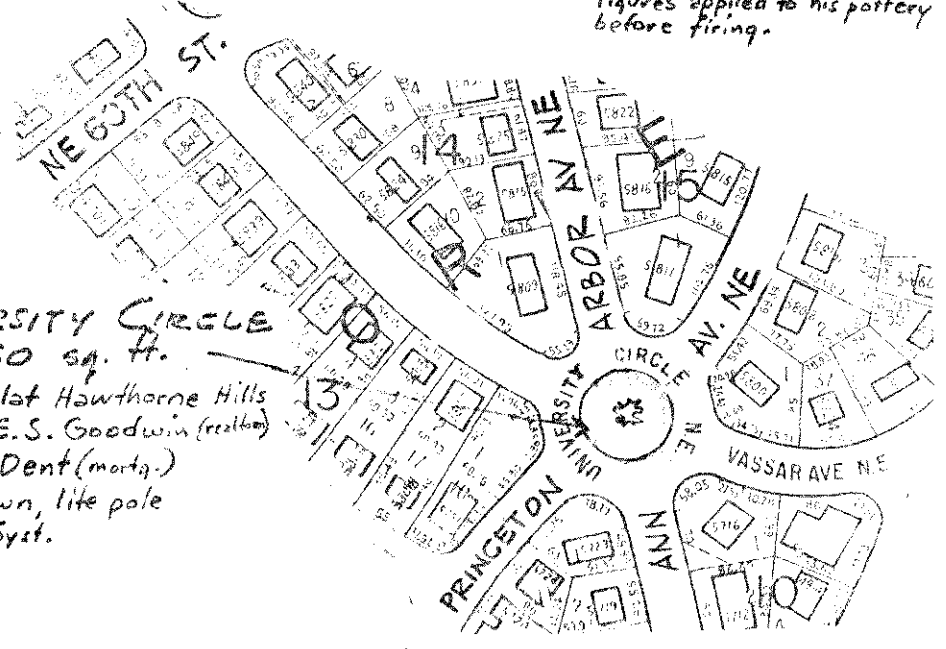
Dedic. in plot of Wedgwood (1941) by Balch + Setzer, Seattle College & White + Ballard.

rock, 3 trees, shrubs, lawn

Named by Mrs. Balch indicating her interest in ceramics: Josiah Wedgwood (1730-95) of England created fine neoclassical cameo-like figures applied to his pottery before firing.



NE 82ND ST.



UNIVERSITY CIRCLE

7,850 sq. ft.

Dedic. in plot Hawthorne Hills (1928) by E.S. Goodwin (realtor) and H.K. Dent (mortg.)

shrubs, lawn, lite pole Sprinkler Syst.

LA 2-0368

UNIVERSITY CIRCLE
UNIVERSITY LAKE SHORE PL.
WEDGWOOD SQUARE

Note - Distances between properties indicated by East-and-West street numbers.