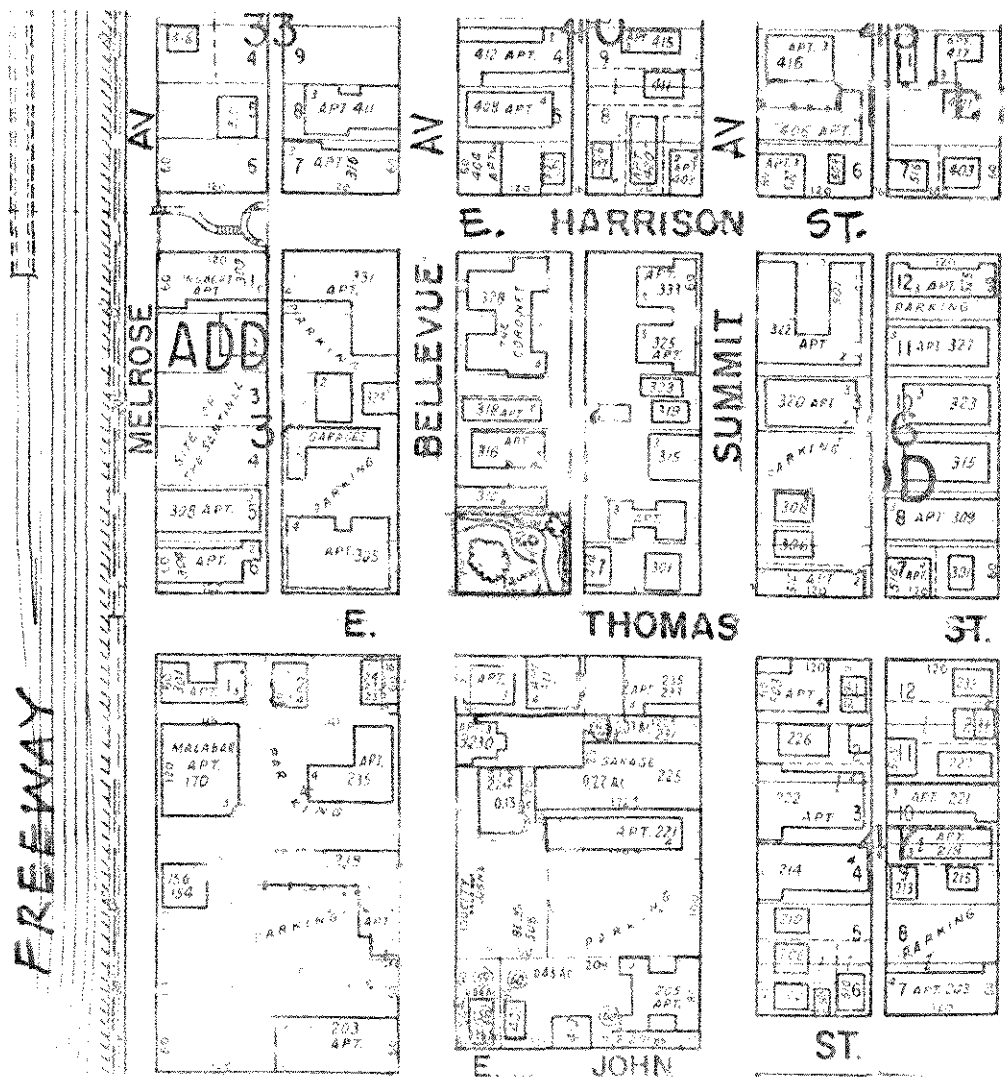


Named by C.I.P./Planning staff
 Name is derived from adjacent street which was named by John Denny to honor his se



- Features:
- 40' diam.
 - Huge 100+yr. old Horse Chestnut
 - Brick patio w/ benches + table
 - Lawn "mound"
 - Planting beds
 - 2 Lights
 - 18" diam. Cherry tree

0.32 Ac.

Purch. 1970 ↑

306 Bellevue Ave.

Foreman 583-2797

THOMAS MINI-PARK

123173