

BALLARD BLVD.

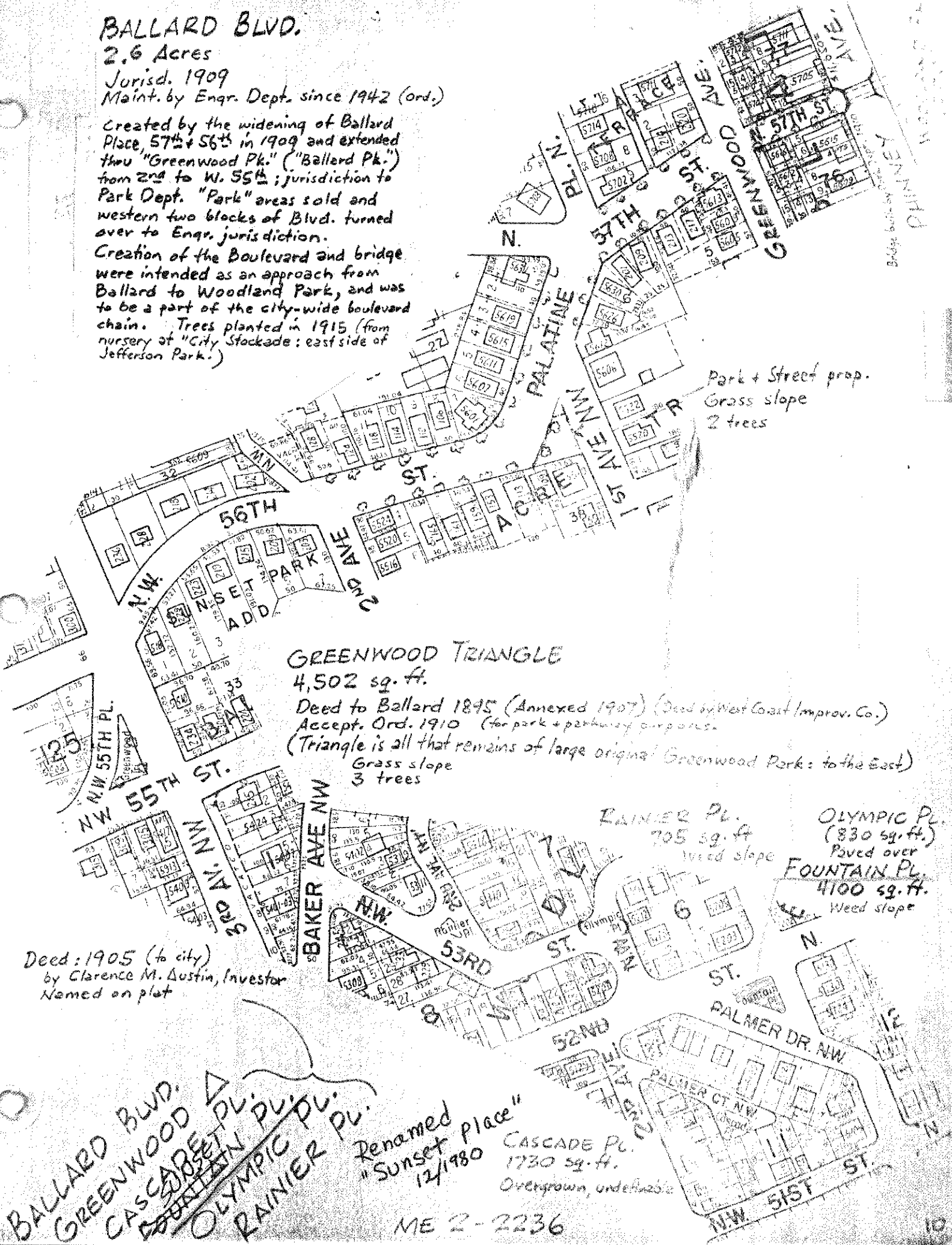
2.6 Acres

Jurisd. 1909

Maint. by Engr. Dept. since 1942 (ord.)

Created by the widening of Ballard Place, 57th + 56th in 1909 and extended thru "Greenwood Pk." ("Ballard Pk.") from 2nd to W. 55th; jurisdiction to Park Dept. "Park" areas sold and western two blocks of Blvd. turned over to Engr. jurisdiction.

Creation of the Boulevard and bridge were intended as an approach from Ballard to Woodland Park, and was to be a part of the city-wide boulevard chain. Trees planted in 1915 (from nursery at "City Stockade: east side of Jefferson Park.")



GREENWOOD TRIANGLE

4,502 sq. ft.

Deed to Ballard 1895 (Annexed 1907) (Deed by West Coast Improv. Co.)

Accept. Ord. 1910 (for park + parkway purposes)

(Triangle is all that remains of large original Greenwood Park: to the East)

Grass slope
3 trees

Park + Street prop.
Grass slope
2 trees

Deed: 1905 (to city)
by Clarence M. Austin, Investor
Named on plot

RAINIER PL.
705 sq. ft.
Weed slope

OLYMPIC PL.
(830 sq. ft.)
Paved over
FOUNTAIN PL.
4100 sq. ft.
Weed slope

Renamed
"Sunset Place"
12/1980

CASCADE PL.
1730 sq. ft.
Overgrown, undeveloped

ME 2-2236

BALLARD BLVD.
GREENWOOD PL.
CASCADE PL.
FOUNTAIN PL.
OLYMPIC PL.
RAINIER PL.

BRIDGE built by ... PHINNEY ...