

Named by Park Board.

Name of park is taken from adjacent street, one of several that honor trees of the virgin forests that fed Henry Yester's sawmill at the end of the skid-road on Elliott Bay. In this area was part of Yester's Donation Land Claim.

SPRUCE comes from a Prussian word "Pruce", and the tree was so named because it was first known as a native of Prussia.

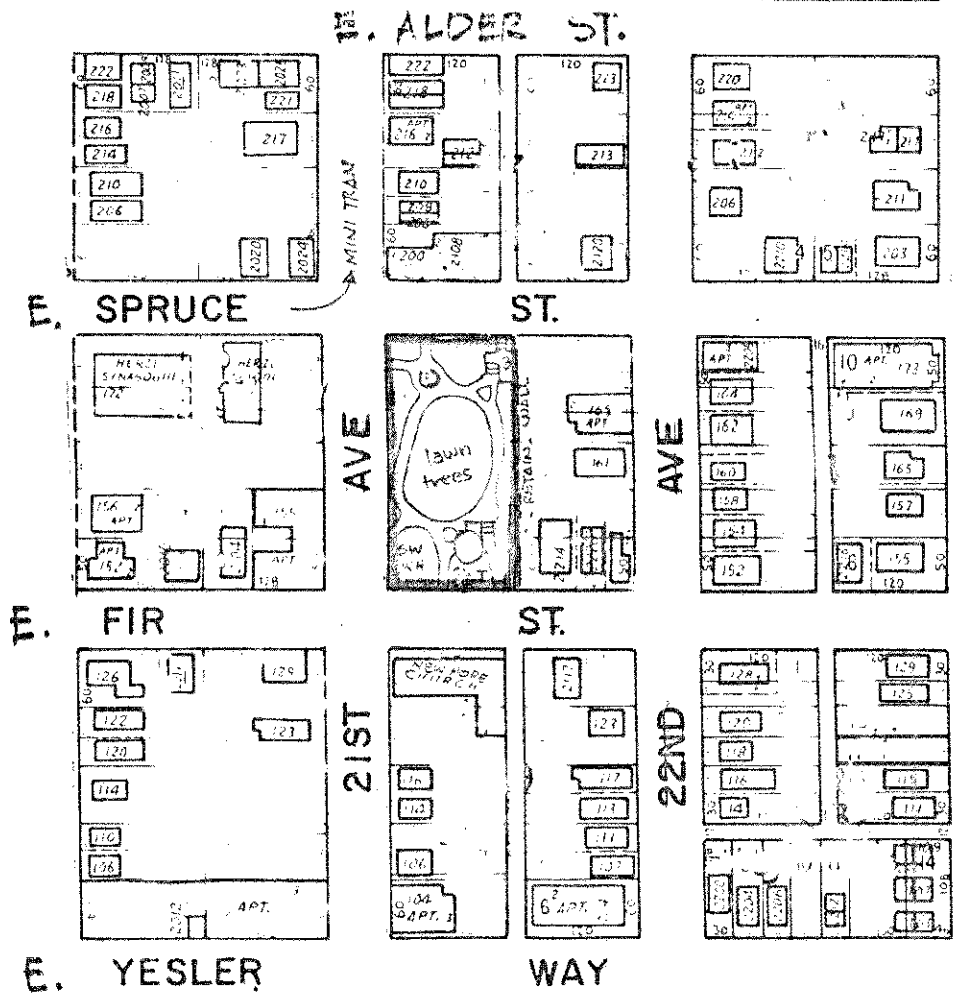
FIR is from a Danish word and ALDER is from an Anglo-Saxon word.



GARFIELD P.F.
EVERS POOL

GARFIELD HIGH SCHOOL

22ND AVE.



- SW = SWINGS
- WHL = WHIRL
- CL = CLIMBER
- SB = SAND BOX
- T = TURTLE
- B = BENCH

32,000 sq. ft.

Purch. 1969: ↑ project

Dist. Foreman 583-2797

SPRUCE ST. MINI PARK

0511572