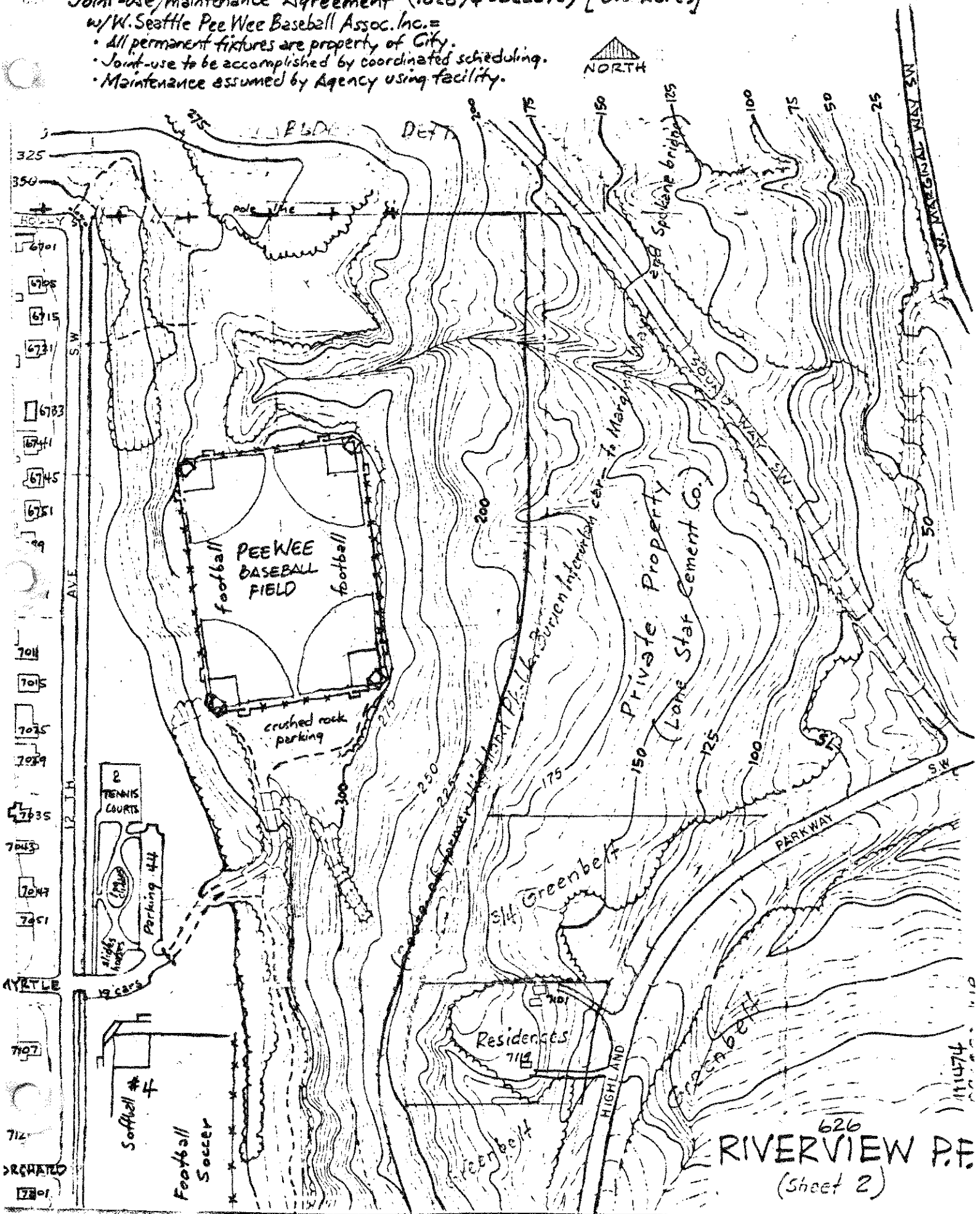


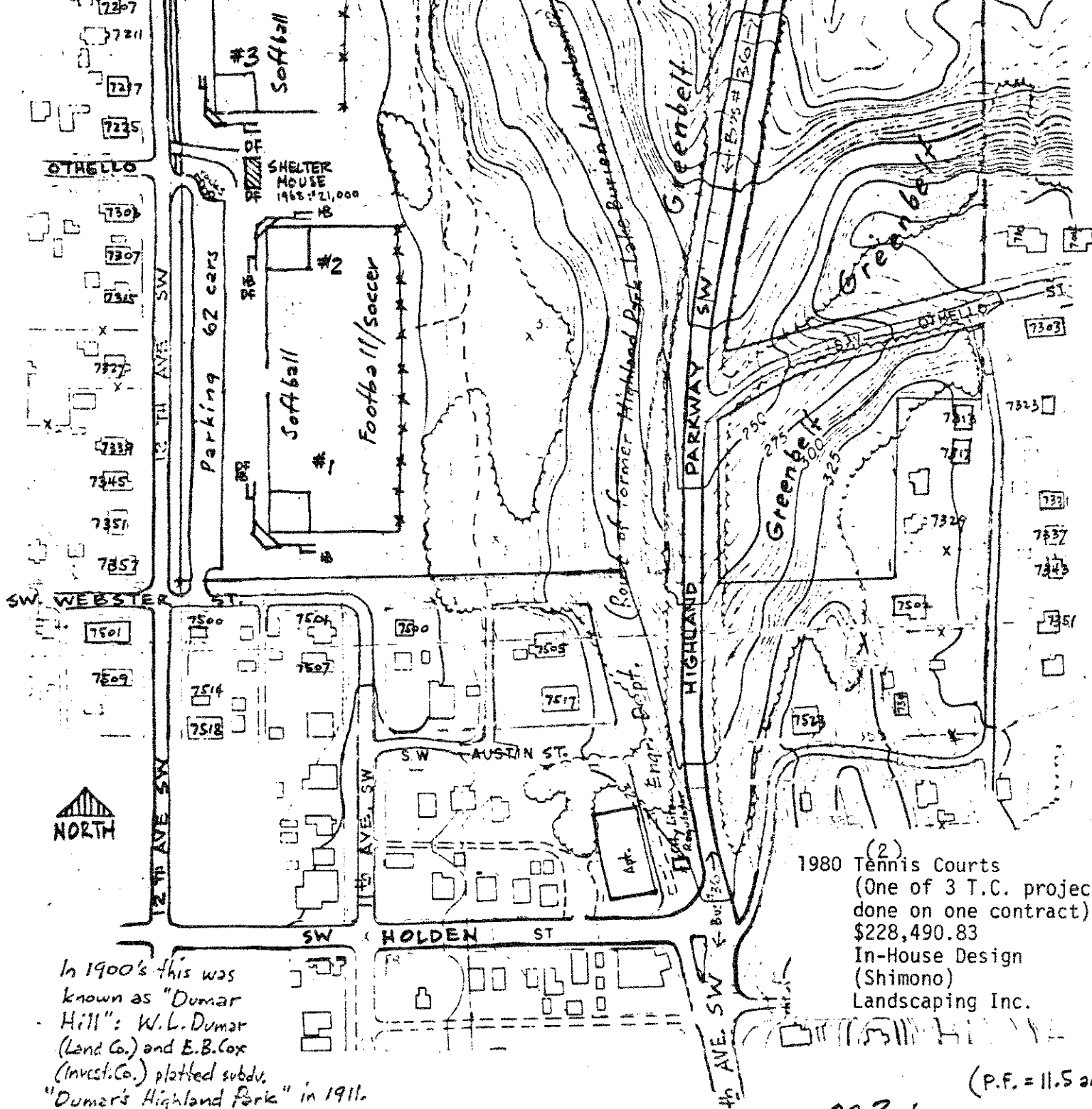
Joint-use/maintenance Agreement (102874 - 022876) [3.3 Acres]

w/W. Seattle Pee Wee Baseball Assoc. Inc. =

- all permanent fixtures are property of City.
- Joint-use to be accomplished by coordinated scheduling.
- Maintenance assumed by Agency using facility.



626
RIVERVIEW P.F.
(Sheet 2)



(2)
 1980 Tennis Courts
 (One of 3 T.C. projects
 done on one contract)
 \$228,490.83
 In-House Design
 (Shimono)
 Landscaping Inc.

(P.F. = 11.5 ac)

39.2 Acres

Transf. 1963
 (w/ Greenbelt = \$36,400 = E.P.A.)

7226-12TH AV. SW.

626 WE 5-2520

RIVERVIEW P.F.

(Sheet 1)

In 1900's this was known as "Dumar Hill": W.L. Dumar (Land Co.) and E.B. Cox (Invest. Co.) plotted subdv. "Dumar's Highland Park" in 1911.
 Dumar was one of the homesteaders in the area: most of the early "settlers" were employed at the Boeing Plant at the foot of the hill - which popularized the name "Boeing Hill." Although West Seattle was annexed in 1907, this property was held by the County for taxes due until 1951 when the City paid the delinquent taxes. In 1945 the Planning Commission recommended site as "Highland Park". The County had considered placing a hospital here; during World War II barracks + barrage balloons were here - concrete moorage blocks still in wooded area.
 NAME: was taken from the Planning Commission name for adjacent neighborhood: Park Board - 1966
 Unparalleled view of Duwamish River valley, city + Cascade Mts.

"Tex Title" Greenbelts acquired by Bldg. Dept. since 1959.

102370 / 092760 IMP