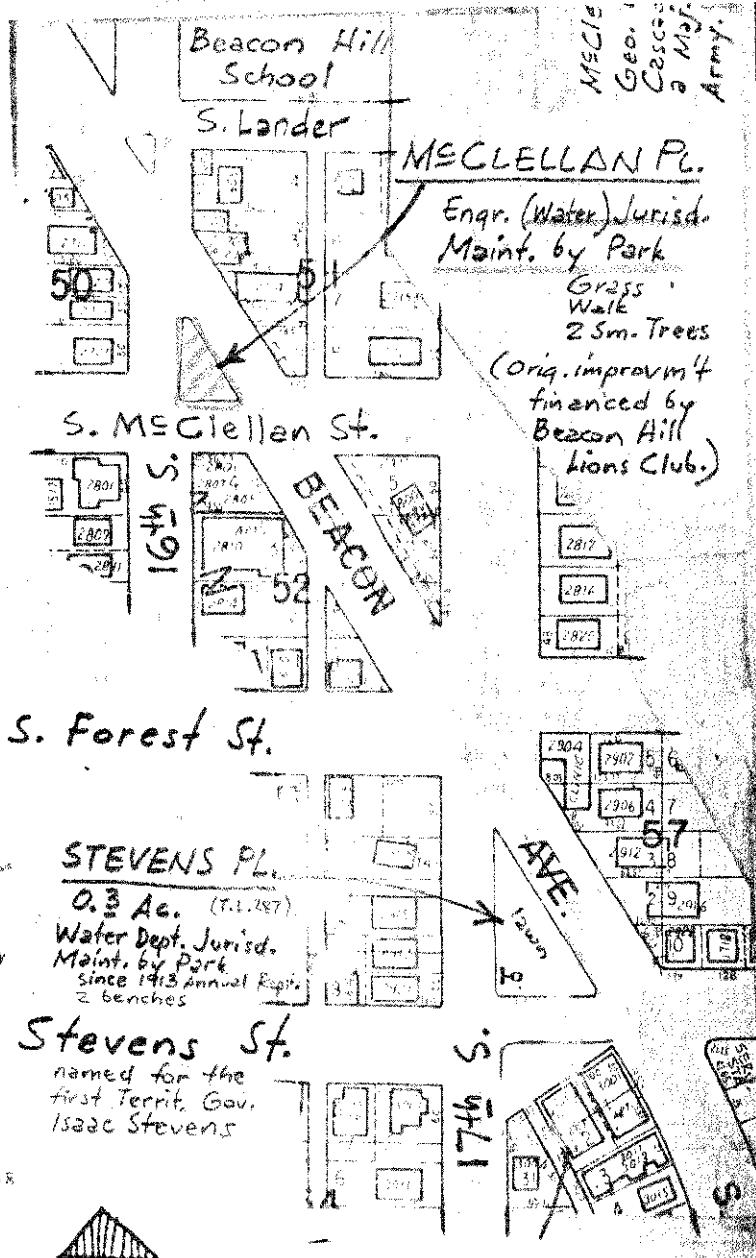
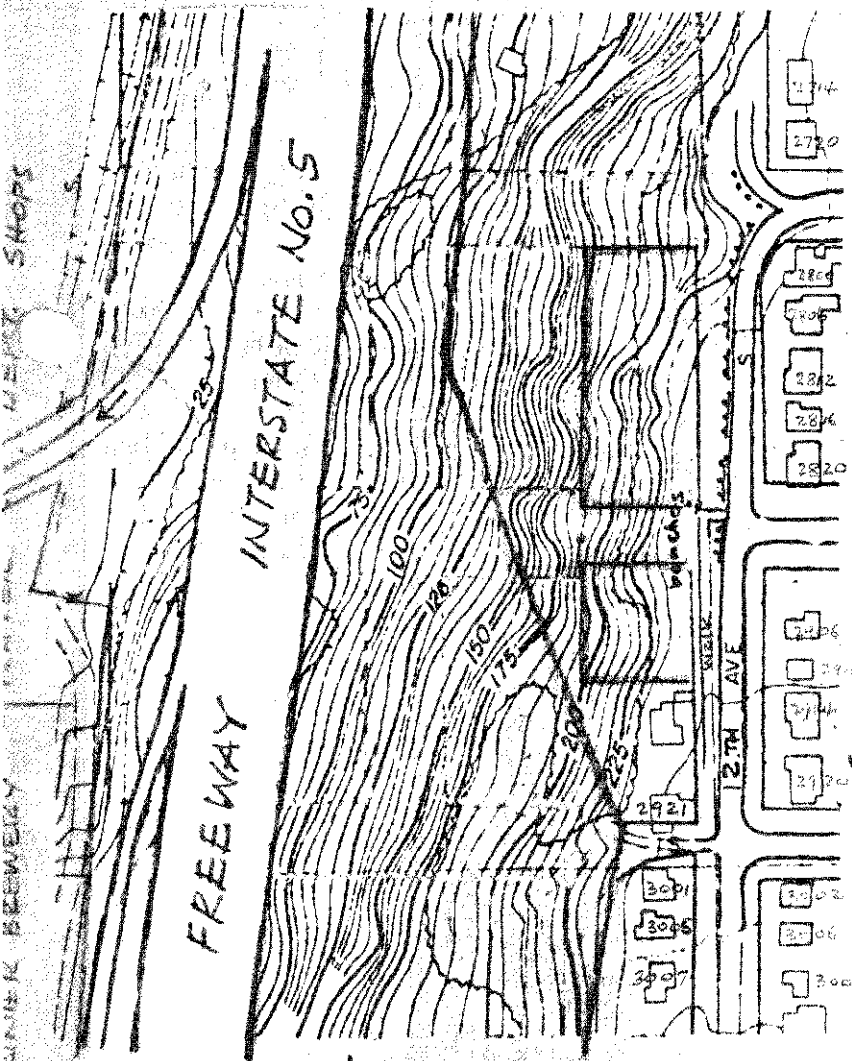


"stockyards viewpoint" was the original name of the Park area. Soon after, the stockyards (and smell) were disused and in 1967 the packing plant was razed. The Freeway was erected in this vicinity in 1966.



0.8 Acre

PA 5-3204



Gift 1950 by C.R. Holliday and H.G. Herman
 members of the Beacon Hill
 Community Club: Holliday
 an employee of Boeing Aircraft Co.
 and Herman a carpenter.

(MCCLELLAN PL.) WATER

(STEVENS PL.) WATER DEPT

TW 24th AVE. SO. VIEWPOINT

Map of panorama of Industrial Duwamish Valley,
 Mount Rainier, Elliott Bay, Olympic Mts. etc.