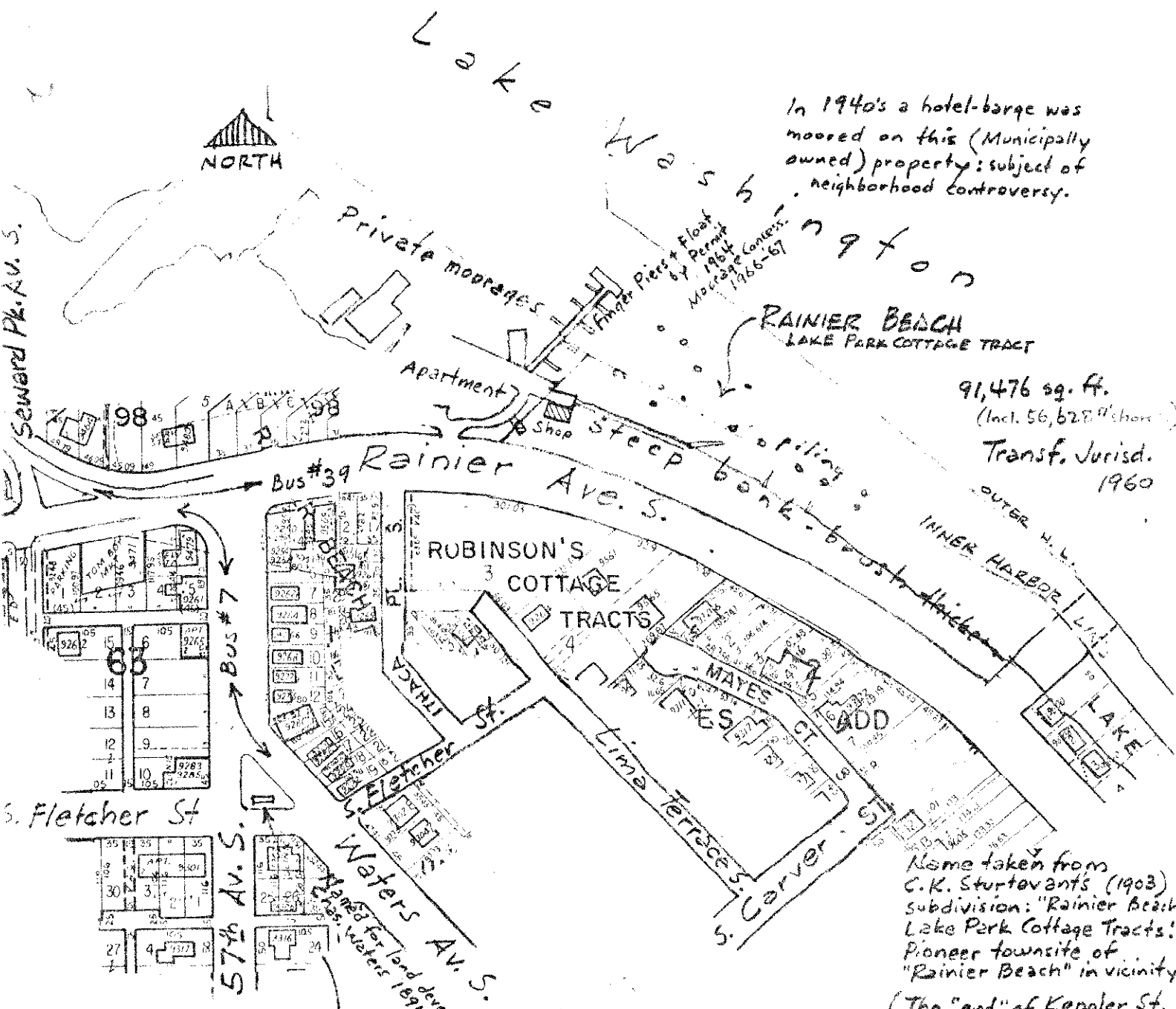


(ATLANTIC CITY PARK)



In 1940's a hotel-barge was moored on this (Municipally owned) property; subject of neighborhood controversy.

91,476 sq. ft.
(Incl. 56,628 sq. ft. shore)
Transf. Jurisd. 1960

FLETCHER PL.

2,400 sq. ft.
Transf. of Jurisdiction. 1913
Platted as "Reserve" in 1891 by Chas. Waters.
Name taken from adjacent street. (Platted as 5th St.)
In 1946 a community civic group, led by Dr. Wm. G. Hutchinson, was permitted to erect a monument to the boys and girls of World War II.
Lawn, shrubs, bench.

Name taken from C.K. Sturtevant's (1903) subdivision: "Rainier Beach Lake Park Cottage Tracts!"
Pioneer townsite of "Rainier Beach" in vicinity.
(The "end" of Keppler St., 3 blks. south, was developed by the Park Recreation Div. from 1920-1936 as "Rainier Beach.")

(Mt. Rainier named in 1792 by Capt. Vancouver to honor Admiral Peter Rainier - British.)

FLETCHER PL.
RAINIER BEACH
LAKE PARK COTTAGE TRACT

PA 5-3204

14
08247