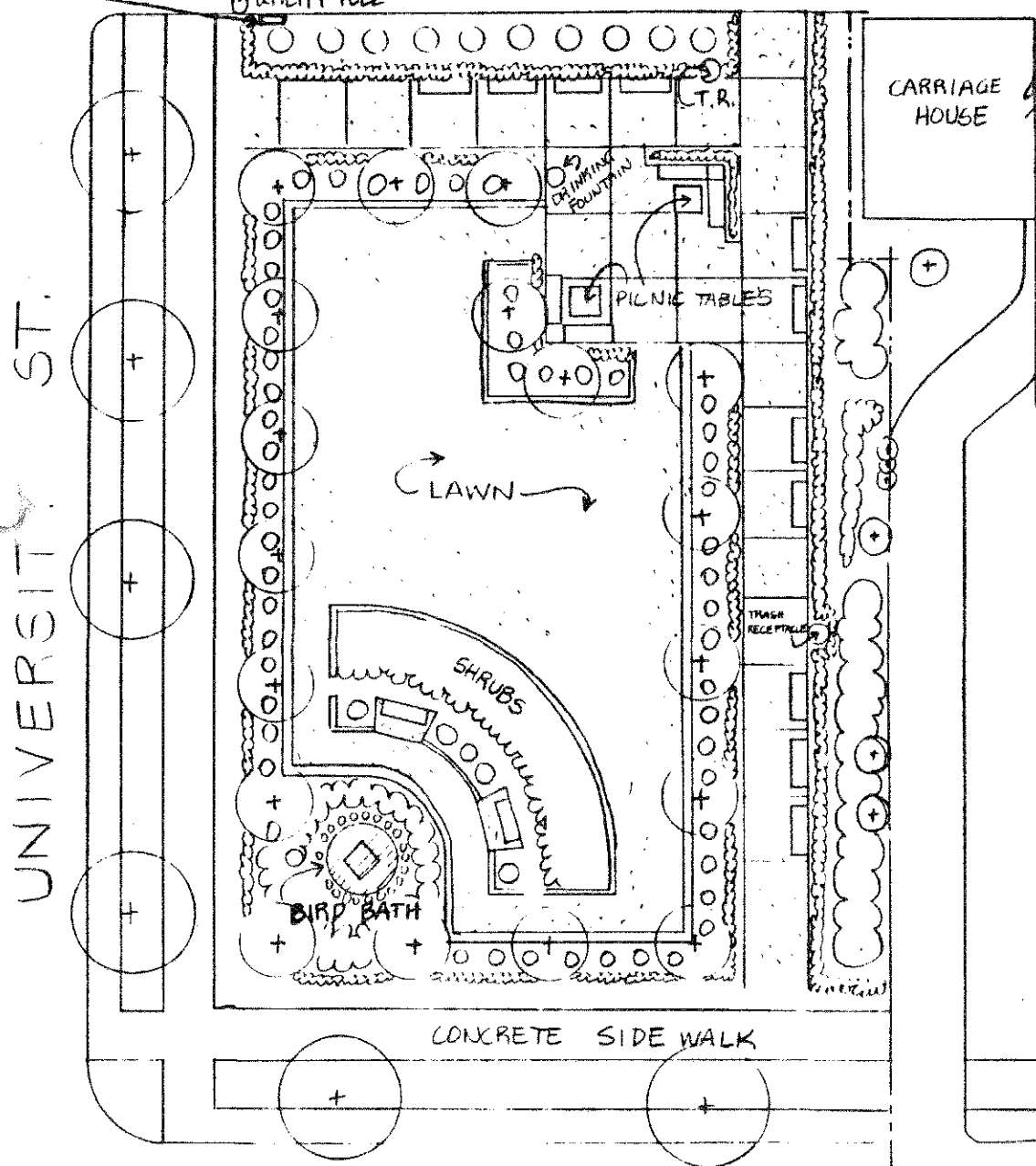


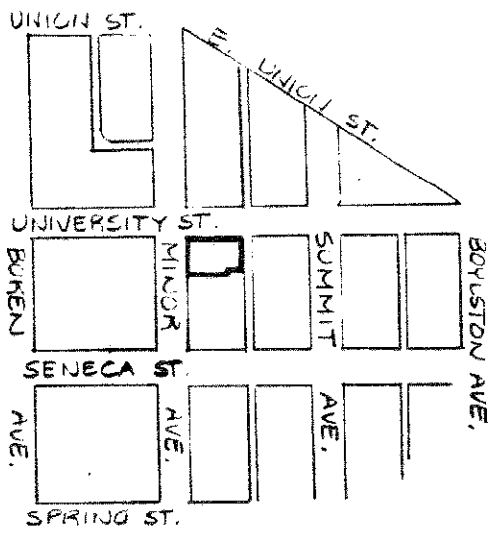
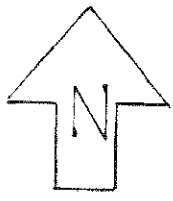
IRRIGATION CONTROLLER BRICK PAVED ALLEY

UTILITY POLE



UNIVERSITY ST.

MINOR AVE.



FIRST HILL PARK

FIRST HILL MINI-PARK

University & Minor

Purchase: aquired 1972 - mansion bought 1975 by Hist. Preserv. Auth. Lease to Sunset Club for parking

Acreage: .97

Develop: 1978 \$43,665.96 Designer: Conservation Co.

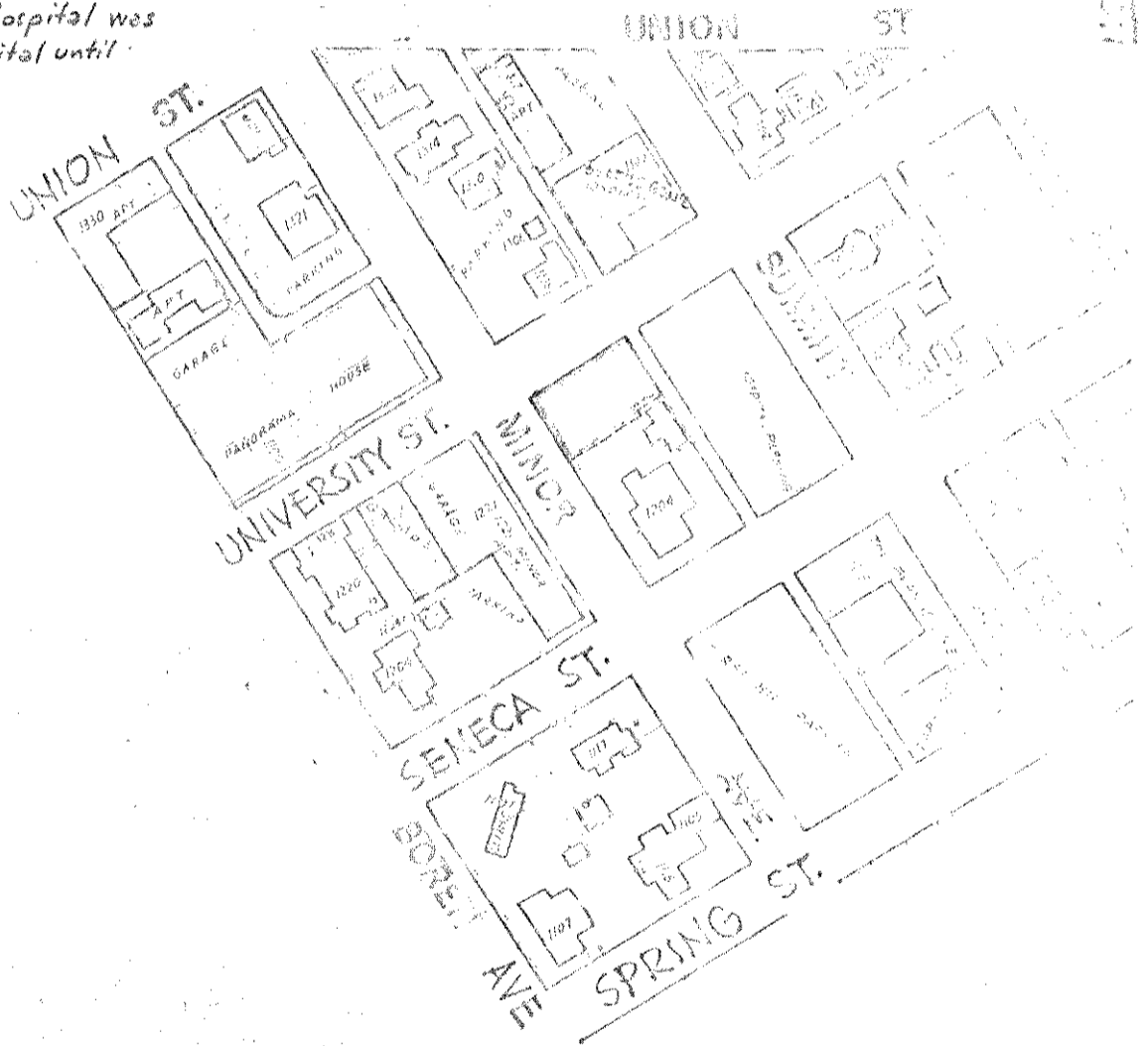
Elements: landscaping, benches

415 FIRST HILL PK.

072800 JMP

Morse assumed from the vicinity, the first major hill east of pioneer Seattle. Its highest point (El. 356) was at Broadway & James St. It was the city's first area of mansions: many-storied homes with gas-lit chandeliers, fire places in every room (no central heating systems), enormous dining rooms, "Sunday" parlors (for entertaining guests), many bedrooms, sliding doors & leaded glass windows. Outside was a Carriage House for horse(s), one or more carriages (for different occasions) with living quarters for the servants (maid/cook and "footman" to care for, and drive, horse and carriage.) Most of the mansions have been "swallowed up" by hospitals, clinics & high rise apartments & asphalt parking areas. One mansion (Tudor style) still remaining in 1972 ~~was~~ adjacent to the park, occupied since 1918± by Joshua Green; financial wizard who came to Seattle in 1853 at age 16 to become a Puget Sound steamboat magnate for 40 years, then prime mover of Peoples National Bank; and avid duck hunter.

Seattle Gen'l Hospital was
 Maynard Hospital until
 1971



0.5 Acre (part occupied)
 Purch. 1972

FIRST HILL PARK *hct*