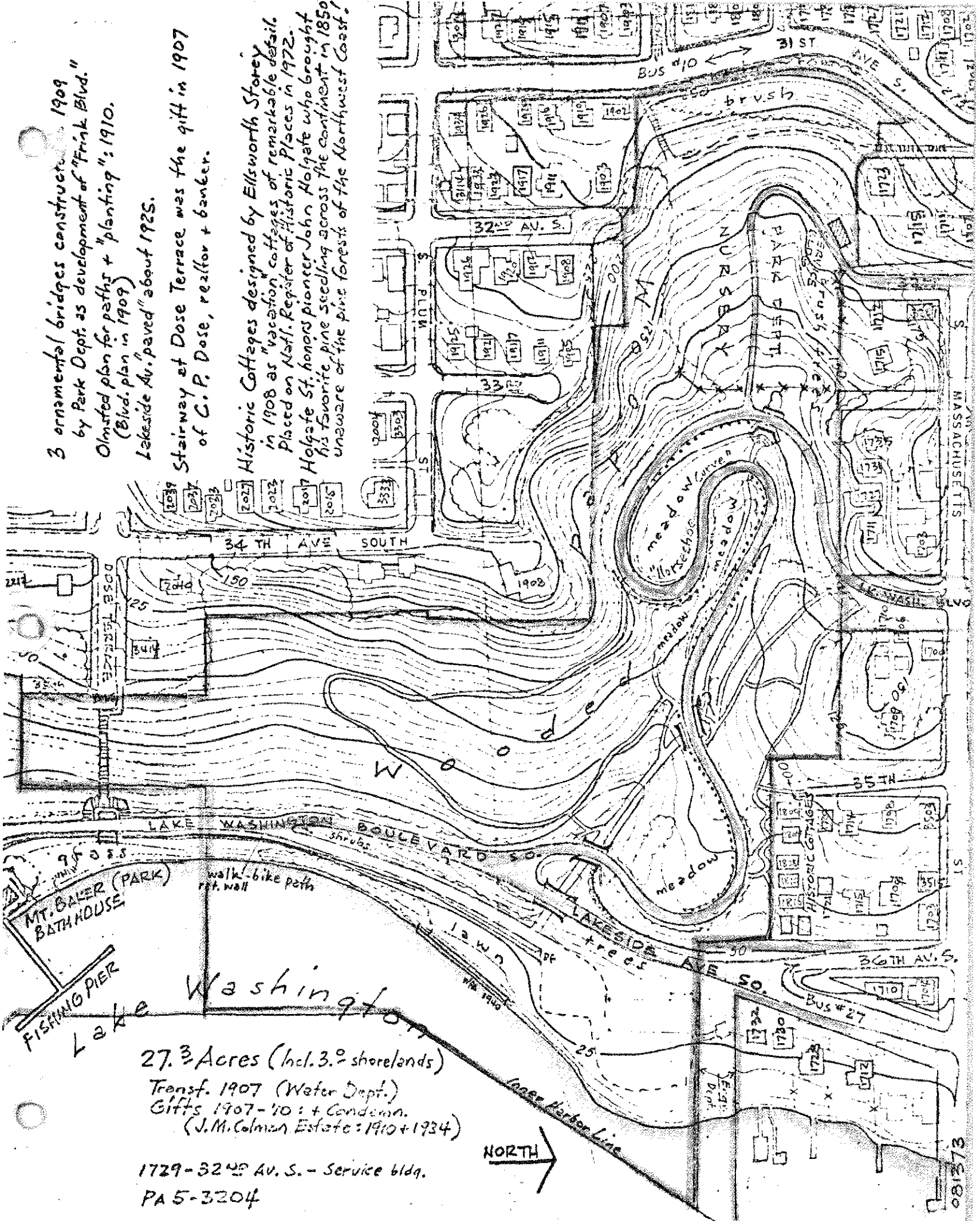


3 ornamental bridges constructed 1909  
 by Park Dept. as development of "Frank Blvd."  
 Olmsted plan for paths + "planting": 1910.  
 ( Blvd. plan in 1909)  
 Lakeside Av. "paved" about 1925.

Stairway at Dose Terrace was the gift in 1907  
 of C. P. Dose, realtor + banker.

Historic Cottages designed by Ellsworth Storey  
 in 1908 as "vacation cottages of remarkable detail."  
 Placed on Natl. Register of Historic Places in 1972.  
 Holgate St. honors pioneer John Holgate who brought  
 his favorite pine seedling across the continent in 1850  
 unaware of the pine forests of the Northwest Coast.



27.3 Acres (incl. 3.2 shorelands)  
 Transf. 1907 (Water Dept.)  
 Gifts 1907-'10: + Condemn.  
 (J.M. Colman Estate: 1910 + 1934)

1729-32nd Av. S. - Service bldg.  
 PA 5-3204

Paths = 1/2 mile

# COLMAN PARK