

JEFFERSON PARK GOLF COURSE

11563

CHEASTY BLVD.
Sheet 3 of 3

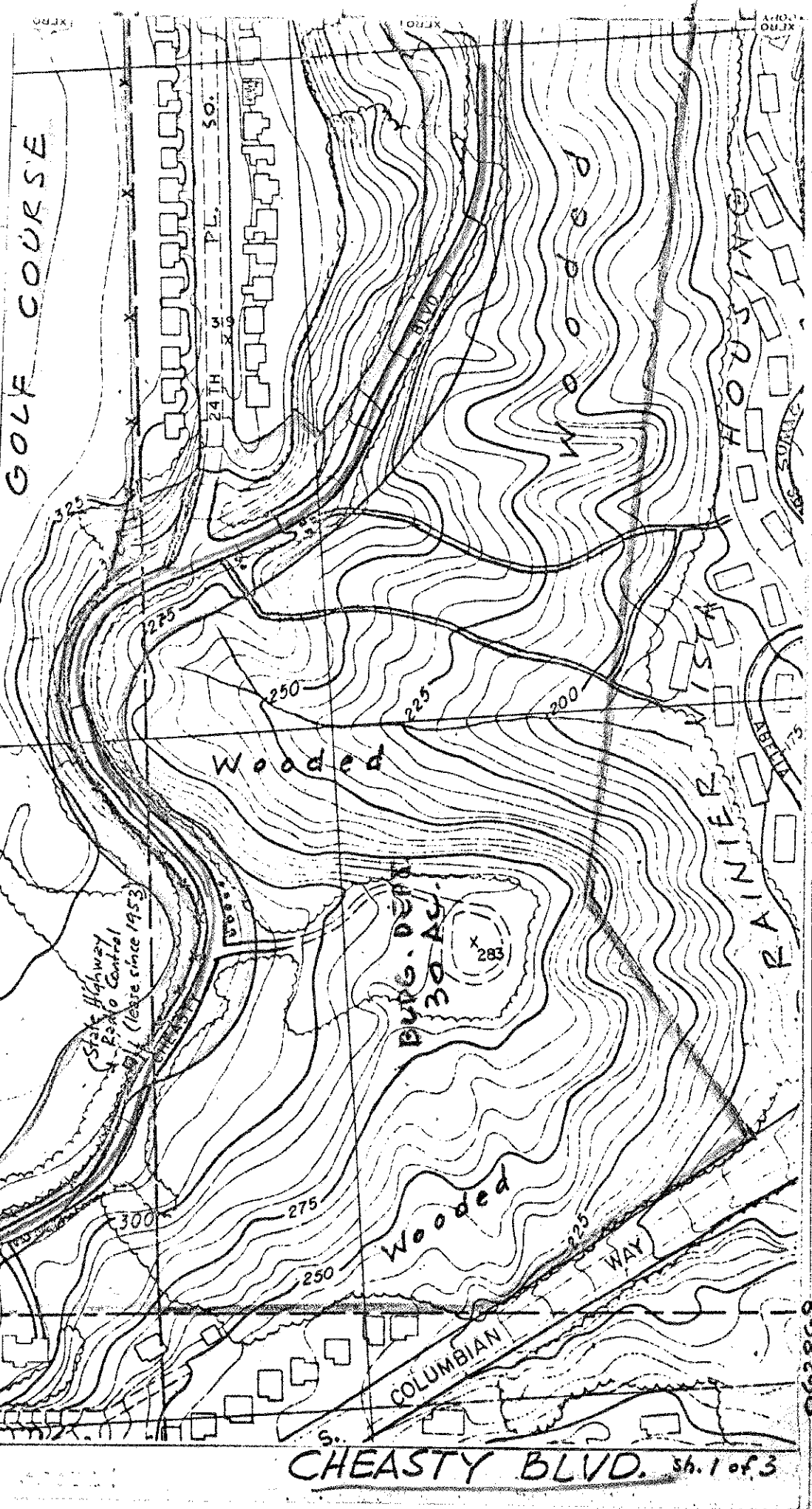
Originally the entrance to Jefferson Park and so named "Jefferson Blvd." Renamed in 1914 by the Park Board to honor one of its' members, E.C. Cheasty (1907-10, 1912-d.1914) because of his efforts toward the establishment of a boulevard system in Seattle (made his own study of European systems) and because he was the "father of the golf course to which the boulevard leads." (Sherwood Gillespy fathered the idea of municipal golf for Seattle.)

Cheasty was a clothier of excellent reputation and noted for civic + club activities, Police Commissioner and A-Y-P Expos. Commissioner.

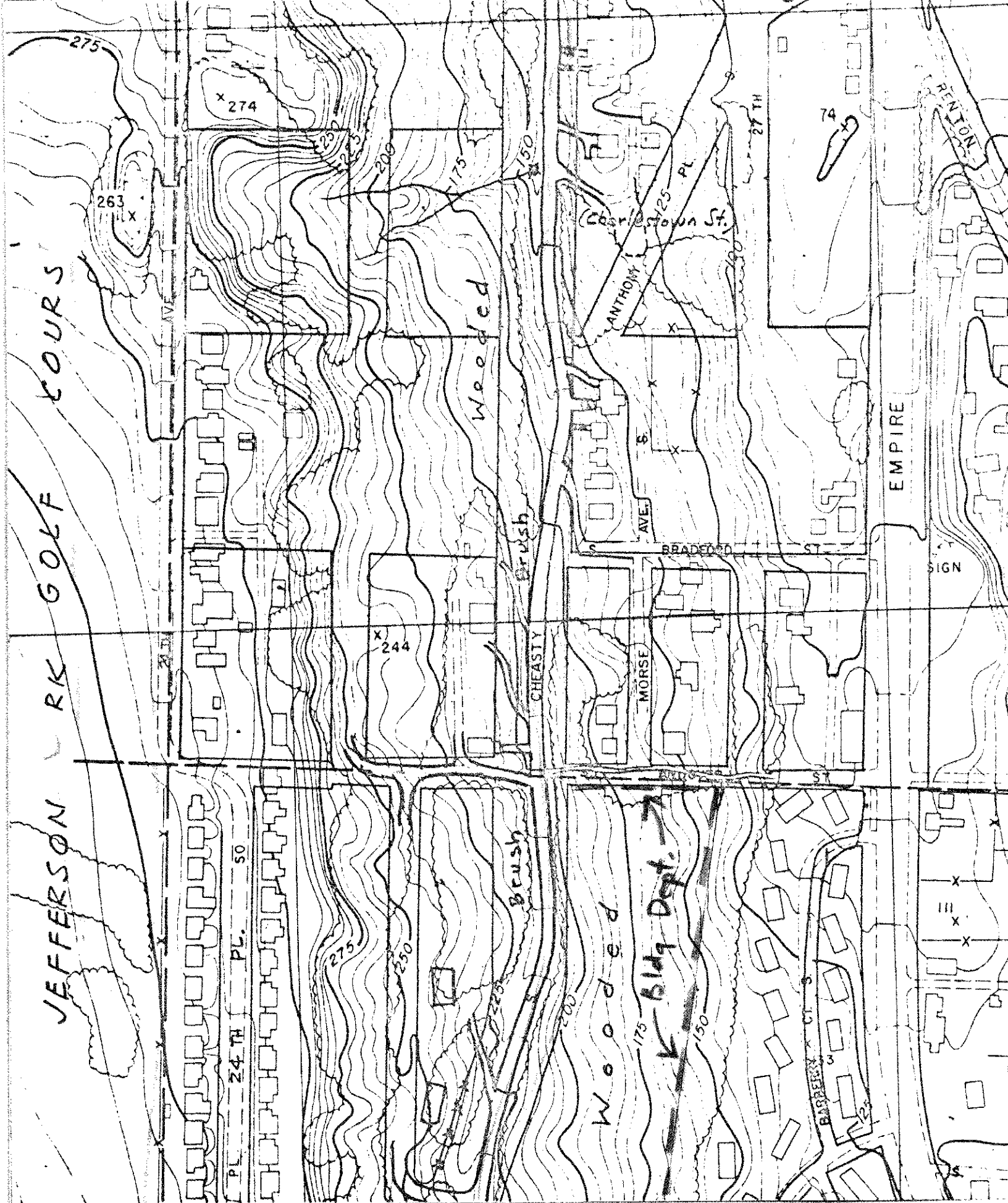
16.1 Acres
(1.3 mi. Blvd.)

Condemn. 1910
10 BF - \$50,631.⁰⁰
for Park, Drive + Blvd.
purposes.

PA 5-3204
Entire length maint.
by Engr. Dept. (1942)



062868



PA 5-3204
 CHEASTY BLVD.
 Sheet 2 of 3