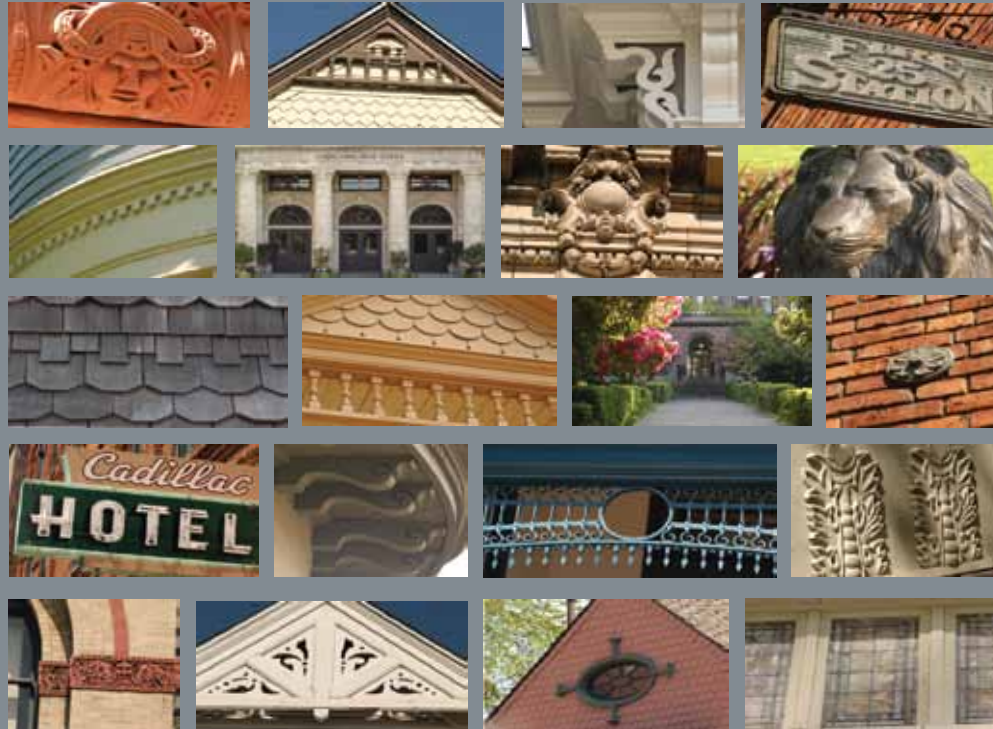


HISTORIC SEATTLE



Zach Sultwardel

HISTORIC SEATTLE
Educate. Advocate. Preserve.

2012 ANNUAL REPORT

HISTORIC SEATTLE COMMUNITY



2012 Volunteer Recognition

Historic Seattle accomplishes its mission by acquiring historic properties for rehabilitation and new uses, delivering education programs to members and the public, and advocating for preservation with citizens and policy makers throughout King County. Historic Seattle's primary community consists of its members and volunteers, program participants, and web/email/social media/phone/mail contacts. Other community members include public officials working on preservation issues, residents, and tenants in Historic Seattle buildings. Historic Seattle's education and advocacy activities are designed for broad public participation by residents of King County. The primary audience is people interested in learning about historic preservation, architecture and design arts, preservation advocacy, and undertaking the appropriate rehabilitation or remodeling of their own historic buildings.

Membership

Historic Seattle's membership roster remained steady through 2012. After launching our online *Preservation Pages*, a directory of business members, in 2011, we continued our outreach to prospective business members through 2012. We earned the support of many new business members, a number of whom participated in our Building Renovation Fair and other activities.

In addition to their membership contributions, many individuals showed their support for Historic Seattle by responding to our Annual Appeal or by donating through GiveBIG, an annual day of giving sponsored by the Seattle Foundation. Others specifically supported the restoration of Washington Hall, or donated in memory of Beth Chave, the City of Seattle Landmarks Coordinator for 25 years, who passed away in May 2012.

Volunteers

On Sunday February 24, 2013 Historic Seattle hosted volunteers at the Dearborn House for our annual Volunteer Recognition, which acknowledged the work accomplished in 2012. Volunteers were treated to a preview of our newly remodeled Patsy Fleck McKay Preservation Library, which now occupies the space once used as the music room for Henry Dearborn and his family. Volunteers were presented with a token gift of a ceramic coaster/tile depicting Town Hall Seattle, which was saved in 1998 and recognized as a Seattle landmark in 2012.

Award Recipients were: Kurt Youenes for his perseverance soliciting vendors for the Building Renovation Fair; Sherri Schultz with The Woman's Century Club; and Larry Johnson and the Ballard Historic Society for their work helping to get the Ballard Carnegie Library designated as a City of Seattle landmark. Mary McCumber was acknowledged as Volunteer of the Year for her strong leadership as Council Chair (2010-12), her extremely supportive work on advocacy issues, and her outstanding work as an ambassador of Historic Seattle Preservation Development Authority.

More than 190 active volunteers worked on the Historic Seattle governing Council and Historic Seattle Preservation Foundation Board, in committees, at the annual Building Renovation Fair, the Design Arts Series, our First Hill project, the Hofius House tour, our August, September, October, and November Washington Hall work parties; and assisted with administrative, program development, and other tasks.

In 2012, active volunteers contributed 1,020 hours toward governance, event production, work parties, and administration.

LETTER FROM THE EXECUTIVE DIRECTOR

Communications

Historic Seattle's bi-yearly newsletter, *Preservation News*, was distributed to over 1,200 people in King County in 2012. Our annual program brochure was distributed to 4,500 people within King County. We have improved and increased use of our www.historicseattle.org web site and social media (Facebook and MAin2 preservation blog) to reach out to the broader community. We regularly send press releases about our events to over 200 sources in the region and nationally and advertise in national and local magazines and newspapers.

Historic Seattle continues to build partnerships with other organizations to produce and promote programs and events. In 2012, these organizations included 4Culture, Museum of History & Industry (MOHAI), Civic Partners Fund in the Seattle Office of Arts & Cultural Affairs, Docomomo Wewa, Washington Trust for Historic Preservation, Frye Art Museum, and Seattle Art Museum.

Technology

In 2012, Historic Seattle's website continued to be an effective tool for conveying information about the organization and for providing an easy way to register for programs, become a member, or make a contribution to further our work in preserving and protecting Seattle's architectural legacy. MAin2, a preservation blog created in 2010, is an important tool to communicate our advocacy efforts and disseminate information about other preservation and heritage-related news and issues. The Washington Hall website highlights the rehabilitation project and the building's history, and offers an events calendar. We continued using our Historic Seattle Facebook page and Washington Hall Facebook page to reach out to a broader audience.



Marissa Nadein

2012 was a great year for Historic Seattle. Washington Hall, the historic Danish Brotherhood Hall in the Central District, continued to be a top priority project. Capital campaign consultant Sirius Advice was engaged and Historic Seattle established a fundraising action plan for the building's projected \$9.2 million restoration. Successful grant requests followed, with Phase 2 culminating in stabilization of the Hall's south wall and a new roof, both essential repairs. Anchor tenants and cultural partners 206Zulu, Hidmo, and Voices Rising engaged their talents and membership to lay the groundwork for joint fundraising for Phase 3: an accessible elevator to allow use of the Hall's second floor main performance space by the entire community. We anticipate ongoing collaboration with the Hall's users in 2013.

April 14 brought the second annual Building Renovation Fair at the Hall, with dozens of specialty vendors answering homeowner questions relating to restoration and renovation of the City's older homes. Presentations ranged from sensitive upgrading of vintage kitchens to earthquake preparedness; and many took advantage of the opportunity to meet the region's experts in old buildings.

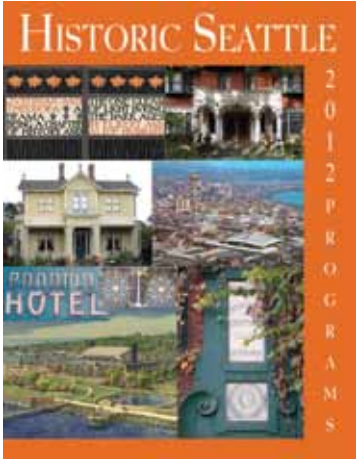
During Preservation Month in May, Historic Seattle was proud to showcase our largest and longest-running preservation project by presenting the fourth annual Preservation Awards at the fully restored Good Shepherd Center in Wallingford. The Center serves as a vibrant performance magnet via The Chapel Space and is home to

the Wallingford Senior Center and garden guru Seattle Tiltch, as well as providing below market artist live-work spaces and offices to many non-profit and community businesses. Anchor tenant Meridian School draws students from all over Seattle.

Historic Seattle continues its advocacy for preservation in many ways each week. We receive numerous phone calls and e-mails ranging from concerns about demolition of neighborhood properties to requests for landmark support. Historic Seattle is not a regulatory agency but instead provides training and advice on best practices. We work with many partners each year: developers, homeowners, neighborhood associations, historical societies and colleagues in the preservation field, government officials, and many others to promote the preservation of our historic and older "character" buildings across Seattle and King County. Our educational offerings continue to attract a following with their range and reach. Members and the public all have access to our annual array of tours, lectures, and events.

I hope you will enjoy the summary of our activities contained in the 2012 Annual Report. The support of our membership and community volunteers make this work possible. Thank you!

Katween Brooker



In 2012 Historic Seattle continued its goal to provide valuable public programming focusing on built heritage. We produced a broad range of design lectures, tours of historic sites, and the fourth annual Preservation Awards. Over 1,000 people attended our events.

In our Design Arts series we revealed the extraordinarily rich collection of historic stained glass present in churches, apartment buildings, and residences on First Hill with a presentation and on-site visits and explored in-depth the work of Rookwood and California art tile companies and their impact upon several First Hill and Capitol Hill buildings where the lectures took place. In June, Historic Seattle and Docomomo Wewa partnered on a three-part lecture series focused on the architecture of the Seattle World's Fair as part of a city-wide celebration of the 50th Anniversary year.

As part of our Preserving Utility series, we spent a morning exploring the National Archives and Records Administration

2012 Program Brochure Cover l to r, top to bottom: Justinian and Theodora, Dard Hunter Design 1906 (Pomegranate Communications); Hofius Residence, First Hill (Lawrence Kreisman); Emily Carr Residence, Victoria, BC (Wayne Dodge); Century 21 birdseye postcard (Eugenia Woo Collection); Panama Hotel sign (Lawrence Kreisman); Malibu tile detail, Piedmont Hotel, First Hill (Lawrence Kreisman); Woman's Century Club, Capitol Hill (Lawrence Kreisman); Rendering of MOHAI on S. Lake Union (MOHAI)

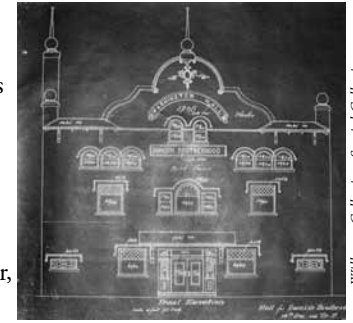
collections, learned how interior storm windows at the Pioneer Building preserve the original windows while providing energy efficiency, and learned about the art of salvage and viewed the stock of salvaged building parts at Earthwise.

Historic Seattle presented its second annual Building Renovation Fair and lectures at Washington Hall in April to provide the public with valuable resources for appropriately restoring and upgrading older properties. And in late September, we had an intensive three-day study tour of built heritage and preservation efforts in Victoria, British Columbia, with expert presenters and guides. We continued our popular First Hill Neighborhood tours during the spring/summer season with the cooperation of the Frye Art Museum, St. James Cathedral, the Washington Trust, and the Sorrento Hotel.

Some of our events were free to the public. In particular, our quarterly members meetings, Learning from Historic Sites, brought people to sites of historic and architectural interest in Seattle and King County. The four programs culminated in a wonderful presentation of a bronze plaque at the Panama Hotel on October 15 by the National Parks Service followed by tours of the hotel rooms and the baths in the basement.

Tickets to Historic Seattle lectures, tours, and events were priced fairly and made available at discount to members of Historic Seattle, along with our participating partners this year—MOHAI, Washington Trust for Historic Preservation, Docomomo Wewa, and Frye Art Museum. All our events have deeply discounted pricing for students.

We continue to provide quality stewardship of the properties we own including the Heg-Phillips, Bel-Boy, and Victorian Row apartments, Egan House, Washington Hall, Good Shepherd Center, Dearborn House, and Cadillac Hotel.



Washington Hall original blueprint

Washington Hall

In 2012, Washington Hall continued to be the point of emphasis within Historic Seattle's real estate portfolio. Thanks to the generous support from the Wyncote Foundation NW, 4Culture, and the Washington State Historical Society, Phase 2 of construction began in September and by year's end was 70% complete. This phase of work included a new roof, structural upgrades to two failed and compromised roof trusses, and a re-build of the deteriorated south masonry wall. Work proceeded on time and under budget thanks to our creative and dedicated construction and design team consisting of CDK Construction, JMS Masonry, SMR Architects, and Coughlin Porter Lundeen. Not only was progress made in the brick and mortar rehabilitation of the building, but important contracts were awarded to qualified and invaluable consultants to assist with a Capital Campaign Feasibility Study and to assist with the formation of an operating plan for the building. The operating plan relies upon the expertise and diverse cultural offerings of project partners Hidmo, 206 Zulu, and Voices Rising.

Washington Hall's rental program continues to gain momentum and generate needed financial support that in turn is invested back into the building to cover operational expenses.

CIVIC AFFAIRS AND ADVOCACY

Historic Seattle was a key player in two neighborhood efforts that highlight how preservation advocacy is most effective at the local level, particularly when it involves community advocates who have a passion for heritage and preservation.

A Ballard Landmark, Finally



Ballard Carnegie Library, 2012

Historic Seattle, the Ballard Historical Society, and Washington Trust for Historic Preservation successfully

advocated for the landmark nomination and designation of the Ballard Carnegie Library (built in 1904). Far too often preservation advocacy takes place when the wrecking ball looms. In the case of the Ballard Carnegie Library, the building was not endangered but its future was also not secured. Listed on the National Register of Historic Places since 1977, everyone had assumed the building was also a designated Seattle Landmark, but that was not the case. National Register listing is honorary and does not protect a building from alteration or demolition. The property was for sale in 2011. Given these factors, neighborhood advocates and Historic Seattle saw an opportunity for proactive preservation advocacy.

In 2011, architect Larry Johnson of the Johnson Partnership and Ballard Historical Society board members separately expressed interest in preparing a landmark nomination,

especially after the property was listed for sale. Historic Seattle connected the two parties so they could join forces. With Larry's experience in preparing dozens of well-researched nominations and the Ballard Historical Society's community connections, the Ballard Carnegie Library building was designated a Seattle Landmark on November 7, 2012. We held strategy sessions; gave public testimony at Landmarks Preservation Board meetings; and engaged in an advocacy campaign (via mass email, our blog and Facebook page) to gather broad support for landmark status. Finally, the Ballard Carnegie Library building is an official Seattle Landmark thanks to community advocacy.

Preserving Character in the Pike/Pine Neighborhood



Melrose Building, 301 E. Pine Street

Apartment Building (1535 Bellevue Avenue E), both built in 1916. These two buildings retain a high level of architectural integrity and the ground floor retail/commercial spaces house some of the most beloved businesses on Capitol Hill, including Bauhaus Books + Coffee. The buildings have anchored the block for almost 100 years, contributing to a streetscape defined by a mix of auto-oriented structures, apartments and commercial buildings.

In 2012, Historic Seattle engaged in efforts to support the preservation of two character buildings in the Pike/Pine neighborhood—the Melrose Building (301 E. Pine Street) and the Pinevue

New development continues to bring more residents to a neighborhood that has historically achieved considerable density with its mix of uses and housing types in a compact, pedestrian-friendly area. Because most of the existing, older building stock is low-scale and vernacular in style, many structures are vulnerable and viewed as redevelopment sites. When reports broke in local media that the half-block where the Melrose and Pinevue buildings are located (along with three other structures) were sold to a new owner who planned to redevelop the site, community members made their voices heard by expressing the importance of preserving the buildings and maintaining the small neighborhood businesses housed in them. After measured outreach to community stakeholders (including Historic Seattle), the developer and its architect for the project presented a proposed plan for the site that would preserve entirely the exterior and interior spaces/volumes of the Melrose Building, Pinevue Apartments Building, and the small building on Melrose Avenue E. adjacent to the Melrose Building. The new project will incorporate the three buildings into a new seven-story, multi-family development which will be set back from the older structures.

The project has received the support of key community leaders and stakeholders. Historic Seattle worked with neighborhood advocates to research the significance of the buildings and evaluate them for local landmark eligibility. We attended meetings and presentations with the developer and architect and have spoken in favor of the project, which appears to meet the spirit of the Pike/Pine Conservation Overlay Zone and its intent to support new development while preserving character structures over 75 years old.

CIVIC AFFAIRS AND ADVOCACY

Preservation Award to be Named in Honor of Beth Chave



Seattle's preservation community lost a dear friend and consummate professional in Beth Chave (1955 – 2012), who passed away on May 15, the day of our 2012 Awards ceremony.

As the Landmarks Preservation Board Coordinator for the City of Seattle for 25 years, Beth left an indelible mark on the city's historic built environment. Her work with professional colleagues, landmark and historic district property owners, and neighborhood advocates throughout Seattle has left a legacy of honoring and protecting historic places that matter in our communities. We cannot walk around this city she called home without seeing the impact she had on almost every corner.

Many of us remember Beth through her dedicated work in the public sector but she was also known for her passion for life and engaged in many enriching activities. Her varied interests went well beyond the appreciation of architectural heritage to include dancing, music, boating, hiking, skiing, travel, gardening, and her beloved dogs.

In honor of Beth, Historic Seattle established a preservation award in her name that recognizes outstanding achievements in the field through our annual preservation awards held in May. Contributions made to Historic Seattle in memory of Beth will be used to produce future preservation advocacy and historic research workshops.

Fourth Annual Preservation Award Ceremony

On May 15, 2012 Historic Seattle hosted its fourth annual Historic Preservation Awards ceremony at Good Shepherd Center to acknowledge successes in the field locally. Former Executive Director John Chaney recalled the stewardship challenges and successes over 35 years of ownership, restoration, and upgrades to this important community asset.

2012 Award Recipients

Best Restoration Project:

Mary Olson Farm, Auburn

Best Rehabilitation Project:

Christ Our Hope Church

Exemplary Stewardship:

Pacific Science Center

Community Advocacy:

Volunteer Park Seattle Landmark Designation

Community Investment:

Michael Malone

Preserving Neighborhood Character:

Totem House Red Mill

Heritage Education Publication:

The Future Remembered: The 1962 Seattle World's Fair and Its Legacy

Living Landmark:

Paul Dorpat



Totem House Red Mill in Ballard



The Future Remembered: The 1962 Seattle World's Fair and Its Legacy

COUNCIL, BOARD, & STAFF

Historic Seattle Preservation Development Authority Statement of Net Assets

ASSETS	
Cash and Current Assets	1,286,000
Restricted Cash & Other Assets	346,000
Property and Related Projects	<u>16,576,000</u>
Total Assets	18,148,000
LIABILITIES AND NET ASSETS	
Accounts Payable	79,000
Accounts Payable—Construction in Progress	339,000
Deposits	104,000
Accrued Expenses & Interest	439,000
Notes Payable	<u>9,163,000</u>
Total Liabilities	10,124,000
Investments in Capital Assets	7,353,000
Unrestricted Assets	617,000
Restricted Assets	<u>54,000</u>
Total Net Assets	8,024,000
Total Liabilities and Net Assets	<u>18,148,000</u>

As of December 31, 2012

2012 Historic Seattle Council

Mary McCumber, Chair
 Karen D. Breckenridge
 Sharon Coleman
 Fauna Doyle
 James Fearn
 Michael Herschensohn
 Kate Krafft
 Pete Mills
 Rico Quirindongo
 Rick Sever
 Marcia Wagoner
 Kathleen Brooker, Executive Director

2012 Historic Seattle Preservation Foundation Board of Directors

Michael Herschensohn, President
 Kathleen Brooker
 James Fearn
 Gary Gaffner
 Rick Sever
 Mary McCumber, Ex Officio

2012 Historic Seattle Staff

Executive Director: Kathleen Brooker
 Director of Real Estate: Kji Kelly
 Program Director: Larry Kreisman
 Director of Preservation Services: Eugenia Woo
 Manager of Volunteers & Events: Luci J. Baker Johnson
 Good Shepherd Center Building Operations Manager: Matt Murray
 Membership Coordinator/Washington Hall Operations: Dana Phelan
 Bookkeeper: Natalie McGovern-Borchers
 Office Administrator: Brooke Best
 Council and Good Shepherd Center Assistant: Cindy Hughes

2012 SPONSORS & DONORS

SPONSORS

\$5000

Key Bank (sponsorship of annual Preservation Awards)

BUSINESS DONORS

\$2500+

Earthwise Architectural Salvage

\$1000-\$2499

Bill Speidel Enterprises

\$250-\$499

Hard Rock Cafe - Seattle

SMR Architects

\$100-\$249

Acme Maintenance

BOLA Architecture & Planning

Cardwell Architects

Weitzel Construction Inc.

INDIVIDUAL DONORS

\$1000+

Bruce and Susan Jones

Patricia Jolin

\$500-\$999

Kathleen Brooker and Timothy McDonald

Norberg Family Foundation

Brad and Kathryn Renner

Paul Sturm and Flora Ling

\$250-\$499

Marjorie Bianco and Bob Vernon

Pauline and Harry Buhler

Shirley Courtois

Gilbert P. Joynt

Larry Kreisman and Wayne Dodge

Bill and Colleen McAleer

Mary McCumber

Joe Meadows

Judith Schweikhardt

\$100-\$249

Jo Addison

Annette Althoff

Andrew Bates

Marta Brace

Peggy and George Corley

Kristi Cornejo

James Ellis

Joanne Euster

Janis Hadley

Christie Hammond

Michael and Julia Herschensohn

Patricia Jacobson

Mary Lee Jahn

Diana James

Norman J. Johnston

Dan and Emily Kozié

James McKendry

Duse and Pete McLean

Andrea Mercado

Michael and Michele Miller

Pete and Jaymie Mills

Lee and Rob Murray

Jan O'Connor

Betta Orshansky

Elizabeth Pearl

Catherine Peterson

Gerald A. Peterson

Kirk Robbins

Viki Sherborne

Mimi Sheridan

Trudy and Harold Stack

Lora Stovall

Jeanne Sutherland

Elaine Talbot

Norman Tjaden

Sharon T. Tsutsui

Michael Voris

Marcia D. Wagoner

Stephen Walsh

Kathryn Warner

Up to \$99

Susan Barnes

Susan Boyle

Pamela Crone

Bruce M. Cross and Karen P. Kruse

Lois Crow

Celina Darnell

Carla DiFranco and Jeffery Packer

Sydney Dobson

Erin Doherty

Sue Drais

Lottie Eskilsson

Joan Golston

Helen Hald

Hylton Hard

James and Denise Hartman

Lori Hess

Nancy Hevly

Herb Bridge and Edie Hilliard

Nancy Hopkins

Patricia Jolin

Suzanne Jones

Robert Kercherside

Alan Knapp

Kari Knudsen

Katheryn and Chapin Krafft

Teresa Lavender

Jean and Roger Leed

Charla Low

Don Martin

Fred Maslan

Red and Peggy Meyer

Rick Miller

Tracy Mitchell

Marisa Munoz

Ken and Donna Olsen

Leanne Olson and Jim Bailey

Meredith Perlman

Dana and Chad Phelan

Jane I. and Frank Roe

Martha Rogers

Marianne Sato

Constance Schnell

Cameron Scodeller

Anne Searing

Rick and Lisa Sever

Milton and Sherry Smrstik

Charlie Stewart

David A. Storm

Martha Tofferi

Mollie Tremaine

Rosemary Van Arsdel

Schuyler Warmflash

Dana Wen

Amy Williams

Jacqueline Williams

Eugenia Woo

SPECIAL GIFTS

Teresita Batayola - \$100
in honor of Luis Batayola

William Abrams - \$50
in honor of Karen O'Leary

MATCHING GIFTS

Boeing Company

IBM

Microsoft

2012 MEMBERS

Sponsors & Donors *continued*

DONATIONS IN MEMORY OF BETH CHAVE

\$1000+

Mary McCumber

\$500-\$999

Karen Gordon

Larry and Lani Johnson

Katheryn and Chapin Krafft

Seattle Landmarks Preservation Board

\$100-\$499

City of Edmonds Employees

Peggy and George Corley

Lynne Ferguson

Ronald Murphy

Queen Anne Historical Society

\$50-\$99

Judith Barbour

Steve Butler

S. Wayne Duncan

Karin Link

Mary Kae McCullough

Mimi Sheridan

Cathy Wickwire

WASHINGTON HALL CAPITAL CAMPAIGN CONTRIBUTIONS

\$5000+

Ellen Ferguson

\$1000-\$2499

Josh Morrison, Amaris Morrison, and Cecilie Hjorth

\$250-\$999

On the Boards (12 Minutes Max Bar Donations)

Elizabeth Dunn

\$50-\$249

Andra Artemova and Maxim Artemov

Matt Harris

Judith Woland

BUSINESS & ORGANIZATION MEMBERS

Benefactor (\$2500)

RAFN Company

Patron (\$1000)

Coughlin Porter Lundeen

Hunters Capital

Guardian (\$500)

Bassetti Architects

Advocate (\$250)

4 Culture

A-FFIX LLC / EarthquakePrepared.com

Diva Dollz

Holland Development

Lawrence Architecture

Marissa Natkin Seattle Homes

Neil Kelly Co.

Northwest Commercial Real Estate Investors

Nostalgic Homes / Keller Williams

Pacific Continental Bank

Pathway Design & Construction

Rejuvenation

Residential Construction - Rick Sever

röm architecture studio

Seattle Stained Glass

Selling Seattle Classic Homes

SHKS Architects

SMR Architects

VanWell Masonry

WAI/Gorny, Inc.

Friend (\$100)

Atelierjones

DLJ Woodworks

Double-hung Window Restoration

Hensel Design Studios

Lund Wright Opsahl LLC

MAKERS Architecture and Urban Design

SHKS Architects

Sortun-Vos Architects, P.S.

The Woman's Century Club

Tile Restoration Center

Windovative Design

Withey Price Landscape & Design

RECIPROCAL MEMBERS

Ballard Historical Society

First Hill Improvement Association

Queen Anne Historical Society

Southwest Seattle Historical Society

Washington Trust for Historic Preservation

INDIVIDUAL MEMBERS

Guardian (\$500)

Sharon E. Coleman

Michael and Julia Herschensohn

Mary McCumber

Brad and Kathryn Renner

Marcia D. Wagoner

Advocate (\$250)

Martha and Edith Aldridge

Eleanor Boba

Kathleen Brooker and Timothy McDonald

Pauline and Harry Buhler

Patricia Jolin

Gilbert P. Joynt

MarLen Kaiser

Kari Knudsen

Larry Kreisman and Wayne Dodge

Bill and Colleen McAleer

Friend (\$100)

Jo Addison

Ingrid Adler

Annette Althoff

Judith Andersen

Marvin and Suzanne Anderson

Renate Bartl

Bob Vernon and Marjorie Bianco

Gretchen and Jon Bishay

Alan and Sarah Black

Ashley Clark and Chris Manojlovic

Bob and Molly Cleland

Thelma Coney

Kristi Cornejo

Shirley Courtois

Nan Dearborn

Erin Doherty

Alvin and Ruth Eller

Jayne Freeborn

Michael and Susan Gladfelder

Carol Gregory

Mark Hannum

Rhys Hefta

Doris Horn

Mary Lee Jahn

Barbara Johns and Richard Hesik

H.C. and Susan Knudson

Dan and Emily Kozié

Katheryn and Chapin Krafft

Patty and Elliott Kreeger

Gavin Lambie

Karin Link

Gretchen Luxenberg

Bob McNulty and Sheila Walter

Pete and Jaymie Mills

Jeffrey Murdock

Ken Nelson and Jessica Greenway

Elizabeth Pearl

Dana and Chad Phelan

2012 MEMBERS

Friend

continued

Catherine Roberti
Joanne Roberts
Linda Schad
Judith Schweikhardt
David A. Storm
Norman Tjaden
Carol Tobin
Kate Van Dyke
Susan Wolcott and George Taniwaki

Individual, Dual/Family, Senior, or Student

Sue and Steve Aahl
Robert Horton and Eryan Abookire
Karen M. Allman
Hilda Allum
Barbara Archbold
Dick Arnold
Chris Austin
Shirli Axelrod and Michael Seamans
Christopher Bain
Luci J. Baker Johnson and Doug Johnson
Mindy Lou Baker
William A. Baker
Susan Barnes
Jennifer and Colin Barr
David Batchelder and Colleen McShane
Harry Beasley
Paula Becker
Brien Beebout
Brooke Best
Sue Billings
Mindy Black
Mark Blitzer
Andrea Blukis
John and Cecilia Bordenet
Susan Boyle and Scott Fife
Marta Brace

Pansy Bray
Karen and Paul Breckenridge
Alison Walker Brems
Daniel Bridge and Simcha Shtull
Donald Brubeck and Lynn Shimamoto
Nancy Bruce
Sandra Burke
Patty Burrow
Elzelina Callis
Michael Calogridis
Kate and Jerry Campbell
Donna Capps
Jean K. Carlson
David Carpenter
Liz and Ted Carpenter
David Carroll
Deborah Carstens
Amber Castaneda
Holly K. Chamberlain
Gerald Chihara
Russell W. Coney
Doreen Conner
Dow Constantine and Shirley Carlson
Peggy and George Corley
JoAnn Cowan and John Turnbull
Bruce M. Cross and Karen P. Kruse
Lois Crow
Herbert Curl
Bridget Dacres and Philip Dickey
Mona Dearborn
Doty DeCoster
Gerald J. Delay and Diana Ryesky
Edla Deppman
John A. and Sue A. DeRosa
Pamela Derry
Marjory Devers
Teresa Di Biase and Frank Shirbroun
Nils Dickmann
Marilyn Dillard

Ken and Lisa Dinsmore
Andrea Divoky
Michael Dorcy
Sue Draiss
Olivia Dresher
S. Wayne Duncan
Dale Dvorak
Anita Edwards and Michael Edwards
Char Eggleston and Sid Eggleston
David and Pamela Eikrem
Twila J. Emry
Ronald Endlich
Julianne Endres
Tarin Erickson
Kathryn Ertel and Robert Goddard
Lottie Eskilsson
Joanne Euster
Gwen Ewan
Dana Falk
James E. Fearn
Martha Fegan
Lance H. Fish
Corinne Fligner
David Flood
Lauren Fowler
Horace Foxall
Ray Frenchmore and Mike Bunney
Pat Gallagher
Arlene Giesmann
Harold Gillies, Jr.
Don Gillmore
Sarah Gladden
Sara J. Glerum
Elisabeth Goldstein
Joan Golston
Carolyn Gould
Molly Graham
Laurel Grant
Sharon Greenberg

LT Gurdjian-Clay
Jerry and Susan Haas
Janis Hadley
Stephanie Ponder Hagen
Helen Hald
Alice Hammond
Christie Hammond
Mia Hannula and Mel Kang
Susan Haris
Patricia E. Hartle
Robert J. Hennes
Jennifer Hessel and Jack Trachtman
Nancy Hevly
Kenneth R. Hill
Herb Bridge and Edie Hilliard
Sue Holland
Helaine Honig
Nancy Hopkins
Suzanne Howard
Heidi Hower
David Huchthausen
Cindy Hughes
Grant Huling
Victoria Isham
Jacqueline Jackson
Patricia Jacobson
Laura Jaeger
Diana James
William Janik
Cherry Jarvis, Jr.
Robert Jenkins
Ashley Jochim
Judith Johnson
Nancy and Chris Johnson
Norman J. Johnston
Bruce and Susan Jones
Richard M. Jost
Mary Junntila
Steve Kalma

2012 MEMBERS

Individual, Dual/Family, Senior, or Student

continued

Tom Kelly
Robert Ketcherside
Ana Kimball
James L. and Phyllis J. Kirkpatrick
Mary C. Kleiner
Alan Knapp
Raymond Konrad
Karen Koon and Brad Edwards
Corine Kuehlthau
Regina K. La Rocca
Darcy LaBelle
Lauri Langton
Jane and Erich Lear
Mary Leatherman
Jean and Roger Leed
Jane Leonard
M.A. Leonard
Louise Lindgren
Donald Logan
Stephen E. Lovell
Charla Low
Jerry Luiten
Judy Lyle
Richard and Betty Lyons
Janet Mackenzie
Don Martin
Timothy and Rachel Martin
Linda M. Mason
Carolyn Mawbey
Chuck and Marilyn McKenzie
Dick McKinnon
Duse and Pete McLean
James McNett
Joe Meadows
Robert Mech
Stephanie Medearis
Gary L. Menges
Red and Peggy Meyer
Bettylu Miller
Clinton and Elizabeth Miller
Heather Miller
Nina Milligan
Thomas Mitchell
Tracy Mitchell
Ken Molsberry
Gretchen D. and Lee E. Monteith
Chris Moore
Lorrie Moore
Marisa Munoz
Theo Nassar
Edith Loyer Nelson
David S. Nemens
Trish Nicola
Mary Noe
Jeffrey Ochsner and Sandra Perkins
Jan O'Connor
Ken and Donna Olsen
Nancy Olsen
James L. Olson
Leanne Olson and Jim Bailey
Heidi Orme and David Farmer
Linda Ortmeier
Diana Painter
Allen Parker
Mary Anne Parmeter
Meredith Perlman
Betty Person
David Peterson
Leah Pistorius
Michael Plunkett
Mary-Alice Pomputius and Walter Smith
Alayne Porter
Cathy Poshusta
Carl and Dallas Presley
Sharon and James Price

Suzanne and John Price
Barbara Quinn
Suzanne Rahn
Charles Ralston
Judy Ramey
Inger-Lise Rasmussen
Lynda Raymond
Kenneth Reis
Francis Riley
Daniel Ritter
Janice Rochester
Jane Roe
Martha Rogers
Susan Rogers
Veronica Rood
Steven Rovig and Brian Giddens
Irwin and Barbara Sarason
Gary Sarozek and Frank Kennard
Marianne Sato
Jean A. Savage
Cheri Sayer
Joanna Schade
Mary Schile
Mary Ann Schmidt
Constance Schnell
Sherri Schultz
Jason Scott
Rick and Lisa Sever
Shirley C. Sexsmith
Scott Shapiro
Marita Sheeran
Mimi Sheridan
William D. and Alison M. Shipman
William and Sandra Shopes
Paul Siebenrock
Goldie and Donald Silverman
Richard Sipe
Judy Smith

Karen Smith
Nancy Smith and Giles Kenyon Smith
Eleanor Smitherman
Milton and Sherry Smrstik
Maris Sovold
Barbara Spaeth
Brandon Spencer-Hartle
Marcia Stansell
Richard Stead
Charlie Stewart
Jared Strote
Paul Sturm and Flora Ling
Jeanne Sutherland
Alice Sutton
Elaine Talbot
Joni Talmage
Cathleen Taylor
William R. Teska
Scott Tholen
Eugene Thorne
Francis Timlin
Anne Tiura
Tom and Lisa Tocher
Martha Tofferi
Sharon T. Tsutsui
Dennis and Dorene Tully
Suzanne Vadman
Rosemary Van Arsdel
Michael Voris
Kristin Voss
Jeffrey Wagner
Jennifer Wah
Stephen Walsh
Wendi Walsh
Schuyler Warmflash
Kathryn Warner
John Watt
Elaine Weeks

2012 MEMBERS

2012 GRANTS

Individual, Dual/Family, Senior, or Student *continued*

Russell Whalen
Patty Whisler
Crystal Whitters
Cathy Wickwire
Virginia V. Wilcox
Charles W. Wilkinson and Melanie Ito
Jacqueline Williams
Jamie Williams
Kay Wilson
Marilyn Wilt
Sharon Winters
Judith Woland
Donna Wolter
Eugenia Woo
Peggy Worthman
Monte Wright
Norman B. Yelin
Norm and Audrey Zemke



Marissa Niakin

The Dearborn House, Historic Seattle's home

In 2012, Historic Seattle was successful in requests for grant funding from 4Culture, City of Seattle Office of Arts & Cultural Affairs, The Boeing Foundation, McEachern Charitable Trust, and Wyncote Foundation NW. We are grateful to these funders for their support of our organization and projects.

- 4Culture Heritage Sustained Support provides operating funds (\$10,000).
- 4Culture Heritage Special Projects Fund provides partial funding (\$7,000) for research and manuscript preparation for a new publication, *Seattle's First Hill: Evolution of a Neighborhood*.
- 4Culture Arts Facilities Equipment Fund provides partial funding (\$10,000) for lighting and sound equipment for Washington Hall.
- 4Culture Landmark Challenge Fund provides partial funding (\$25,000) for mold remediation in Washington Hall.
- 4Culture Emergency Fund provides partial funding (\$100,000) for south wall stabilization and restoration at Washington Hall.
- 4Culture Cultural Facilities Fund provides partial funding (\$35,000) for restoration of windows on the south wall of Washington Hall.
- City of Seattle Office of Arts and Cultural Affairs Civic Partners Fund provides partial funding (\$1,990) for our 2012 Design Arts Lectures.
- The Wyncote Foundation NW provides partial funding (\$100,000) for south wall stabilization and restoration at Washington Hall.

- McEachern Charitable Trust provides partial funding (\$25,000) for the Washington Hall Restoration project.
- The Boeing Foundation grant provides funding (\$20,000) for producing as-built architectural drawings, space programming, and community building for Washington Hall.
- Seattle Housing Authority Federal Choice Neighborhoods grant for Yesler Terrace Redevelopment – \$300,000 grant provides partial funding for the Washington Hall Restoration Project.

THE SEATTLE FOUNDATION'S GIVEBIG CHALLENGE

GiveBIG is an annual, one-day, online event encouraging residents of King County to make donations to local nonprofits. Individual donations are partially matched by the Seattle Foundation and GiveBIG sponsors. On May 2, 2012, GiveBIG raised \$7.4 million for nonprofits in 24 hours. Historic Seattle was pleased to receive \$4,570 from 36 donors, and \$497 from the "stretch pool" of matching funds.

HISTORIC SEATTLE
Educate. Advocate. Preserve.

WWW.HISTORICSEATTLE.ORG
1117 MINOR AVENUE, SEATTLE, WA 98101
206-622-6952