



2012 Traffic Report



Transportation Committee Briefing
Dongho Chang – City Traffic Engineer
May 12, 1014

SDOT's mission & vision

Mission: delivering a first-rate transportation system for Seattle.



Vision: a vibrant Seattle with connected people, places, and products.

SDOT's core principles



Presentation overview

- What is the Traffic Report
- Ways we use the data
- Volume and speeds
- Collisions
- Future data collection

What is the Traffic Report?

This report gives an overall, broad-spectrum picture of the state of traffic in the city of Seattle:

- Volume and Speed
- Traffic Collisions
- Future Data Collection

Ways we use the data

Traffic data is used for many purposes, including:

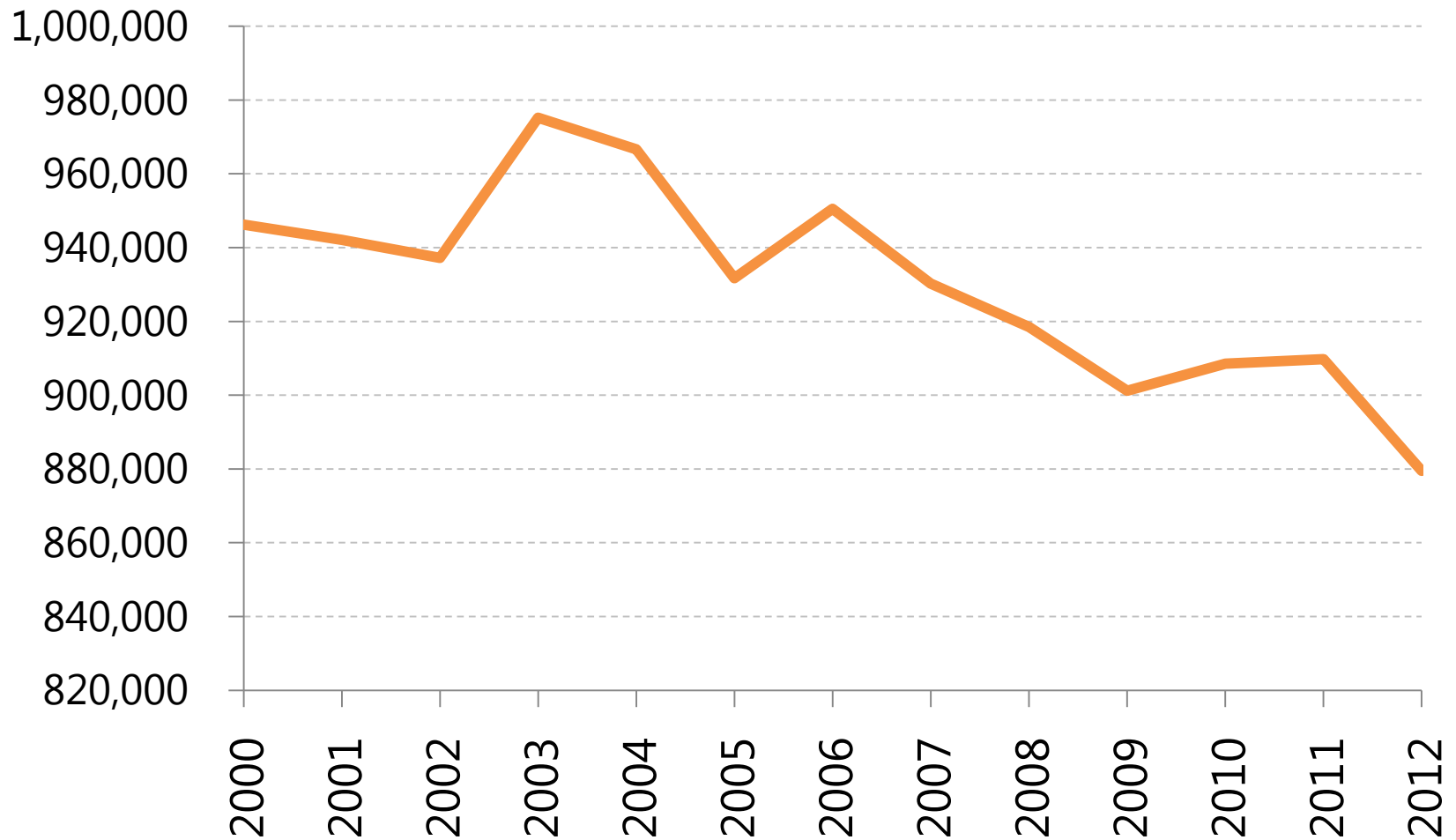
- Safety reviews
- Safety project prioritization
- Corridor planning
- Maintenance prioritization
- Performance measures

Traffic volume and speed

Traffic volume was **down 3.3 percent** compared to 2011.

The 85th percentile speed decreased at five of the annual speed study locations and increased at the other five.

Average daily traffic in Seattle



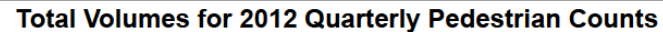
Bike and pedestrian volume

Bicycle volume was up **4.7 percent** from 2011 in the quarterly citywide count program.

Third highest bicycle commute share of large US cities at 3.4 percent.

Average downtown pedestrian volume up **2.4 percent** in the Downtown Seattle Association counts.

Total pedestrian
volume up 18% over
2011



Traffic collisions

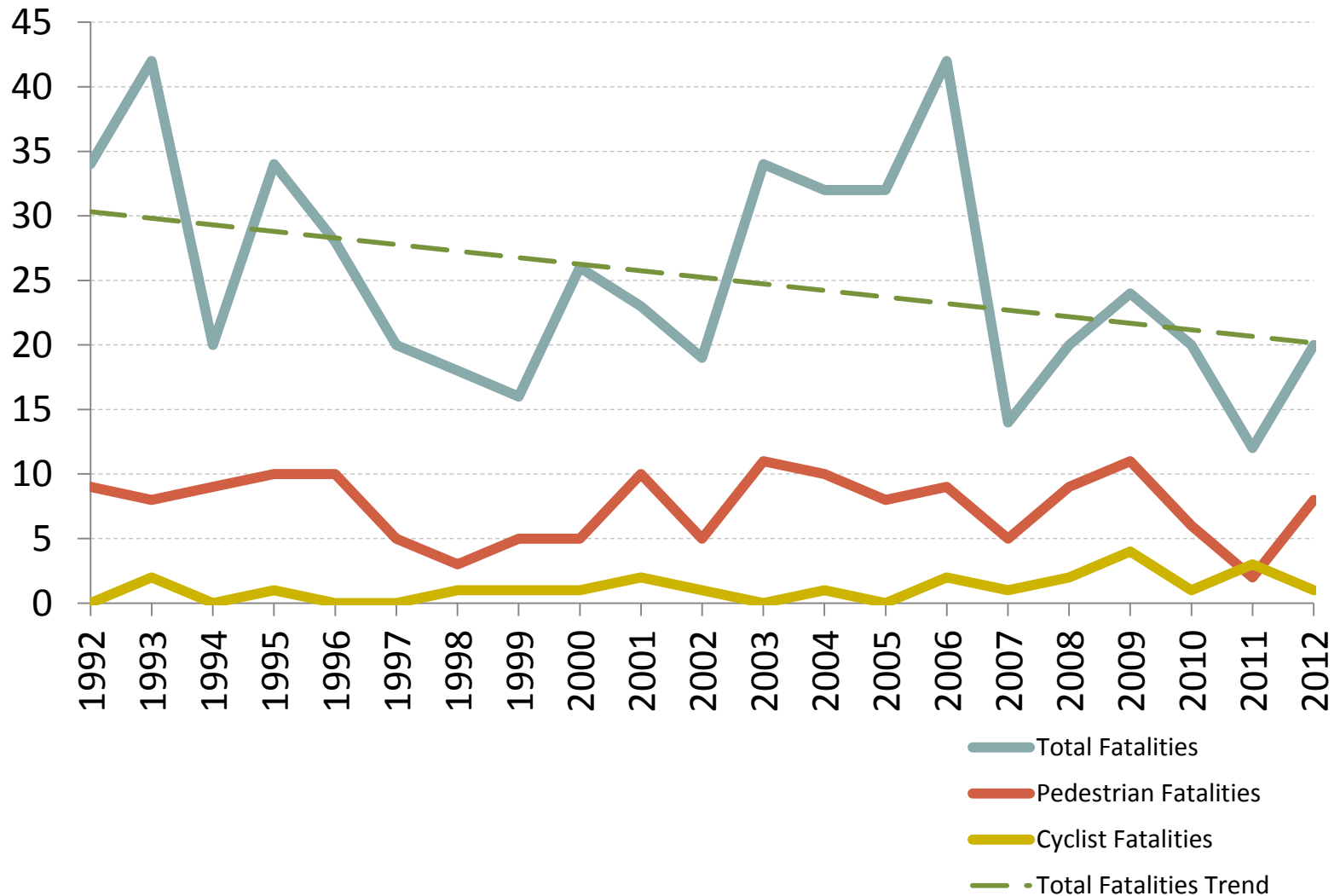
11,581 police reported collisions in 2011 compared to 11,339 in 2011.

Second lowest pedestrian fatality rate of large US cities.

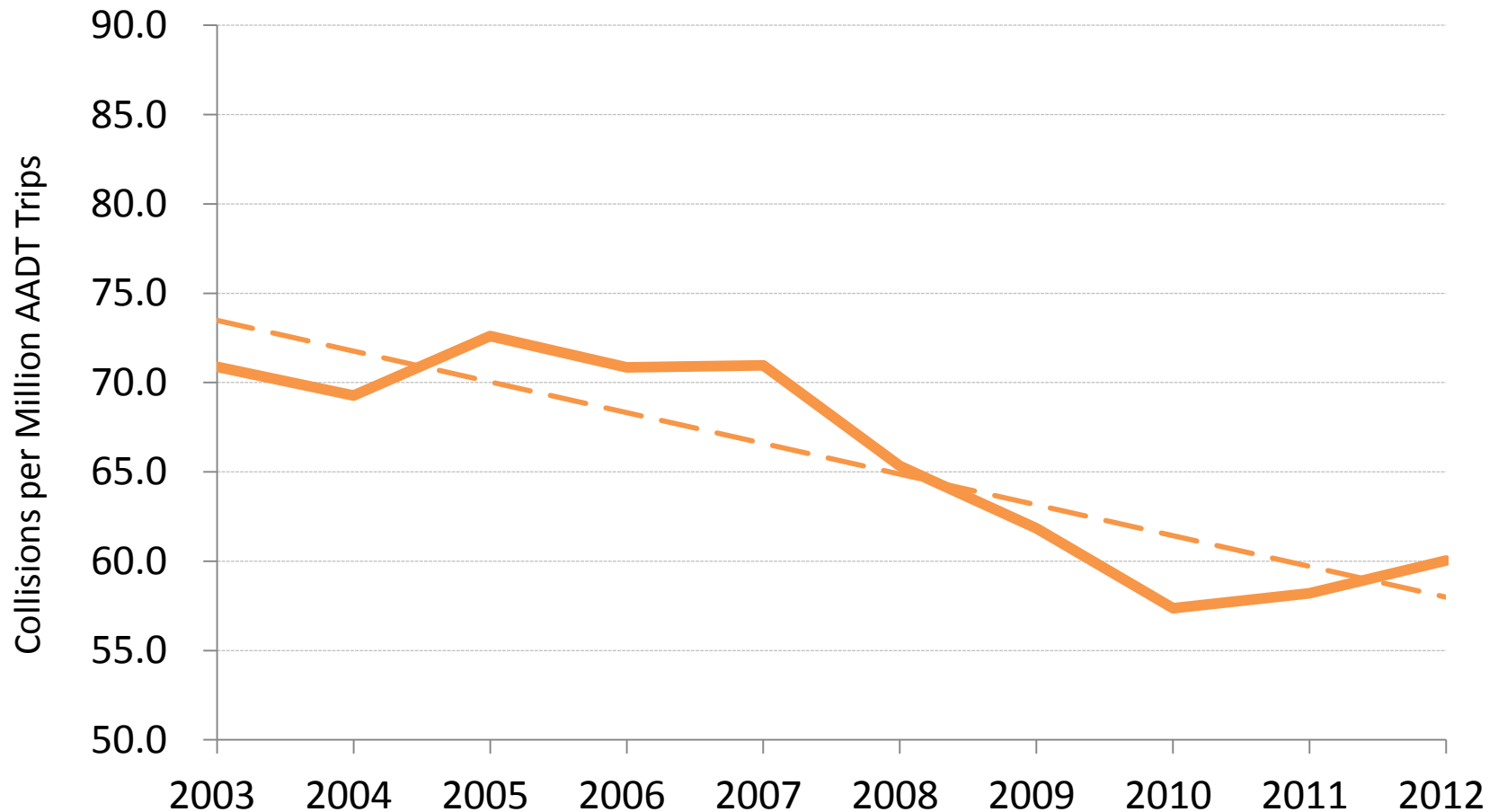
Eighth lowest bicycle fatality rate of large US cities.

20 traffic collision fatalities in 2012.

Fatalities on Seattle streets



Citywide collision rate



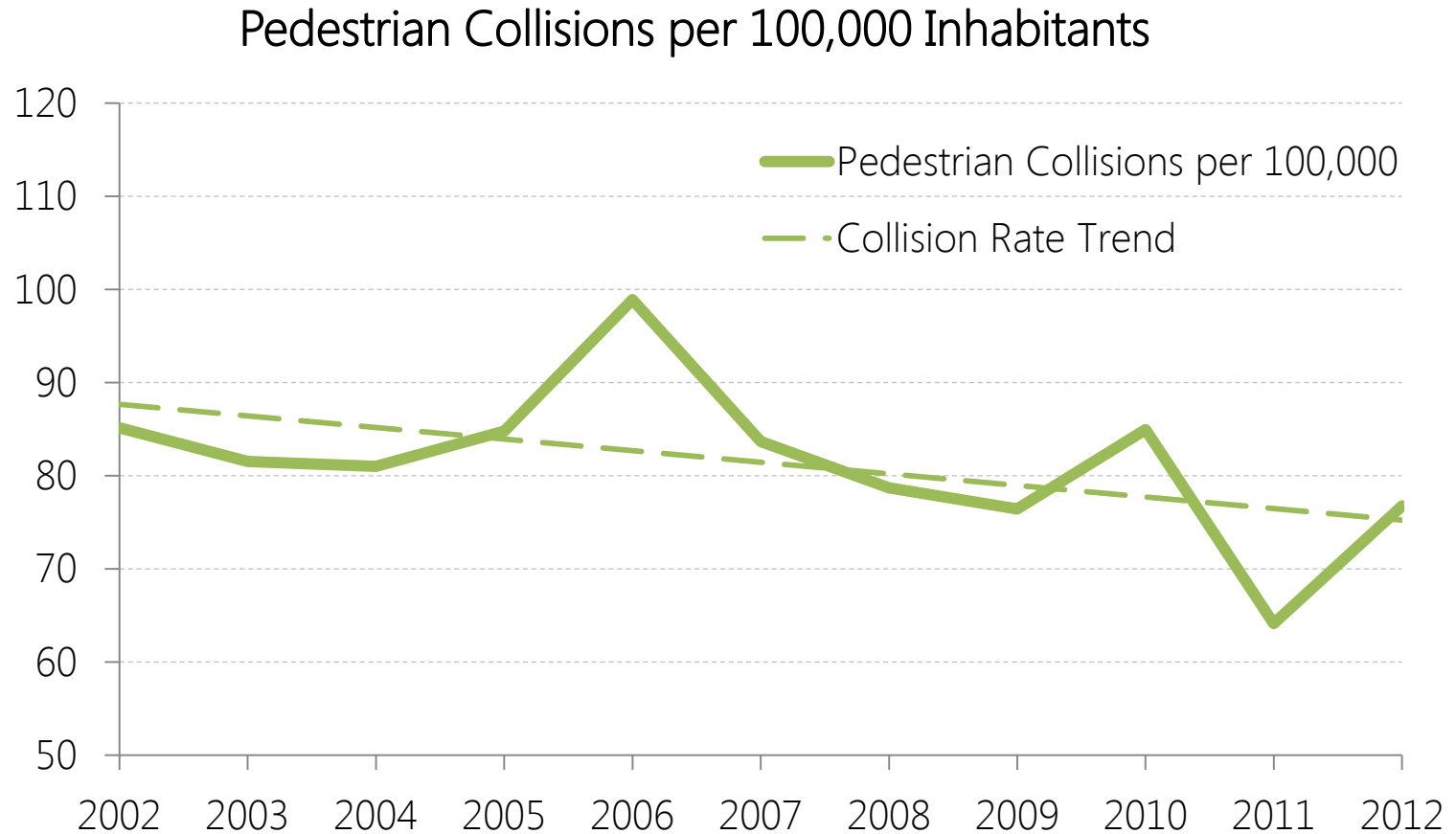
Traffic collisions - pedestrians

Pedestrian collision rate continues its downward trend even with an uptick in 2012

Did not grant right of way to pedestrian is still the most common contributing factor.

487 pedestrian-involved collisions and 8 pedestrian fatalities in 2012.

Pedestrian-involved collision rate



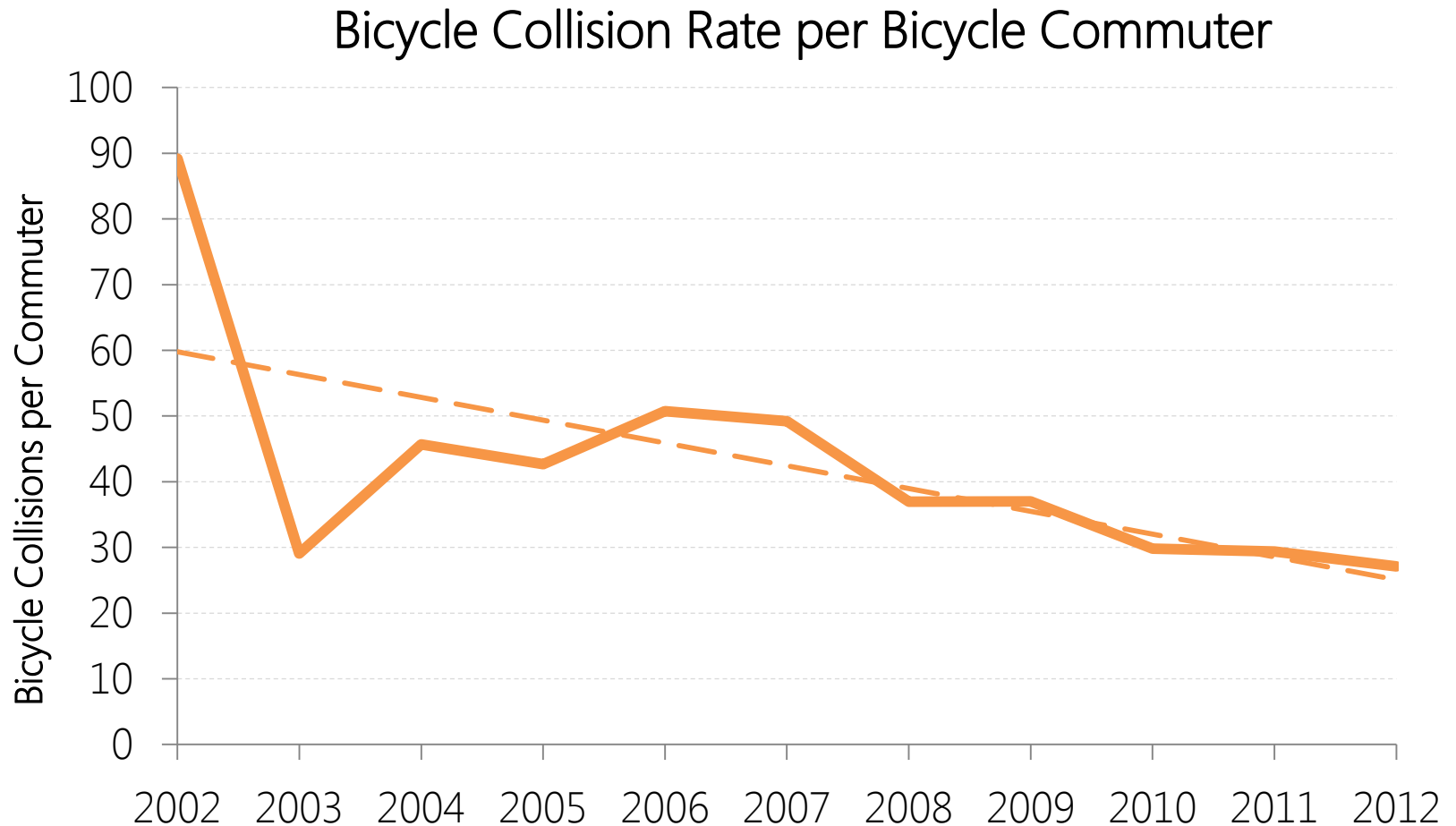
Traffic Collisions - Bicycles

The bicycle collision rate continues to decline as a result of increased ridership.

407 bicycle-involved collisions resulting in one fatality in 2012.

Did not grant right of way to bicycle is still the most common contributing factor.

Bicycle Collision Rate



Future data collection

2013 Report will include:

Data from the Fremont Bridge bicycle counter.

Freight classification data from flow count locations.



Questions?

dongho.chang@seattle.gov | (206) 684-5106

<http://www.seattle.gov/transportation>

