

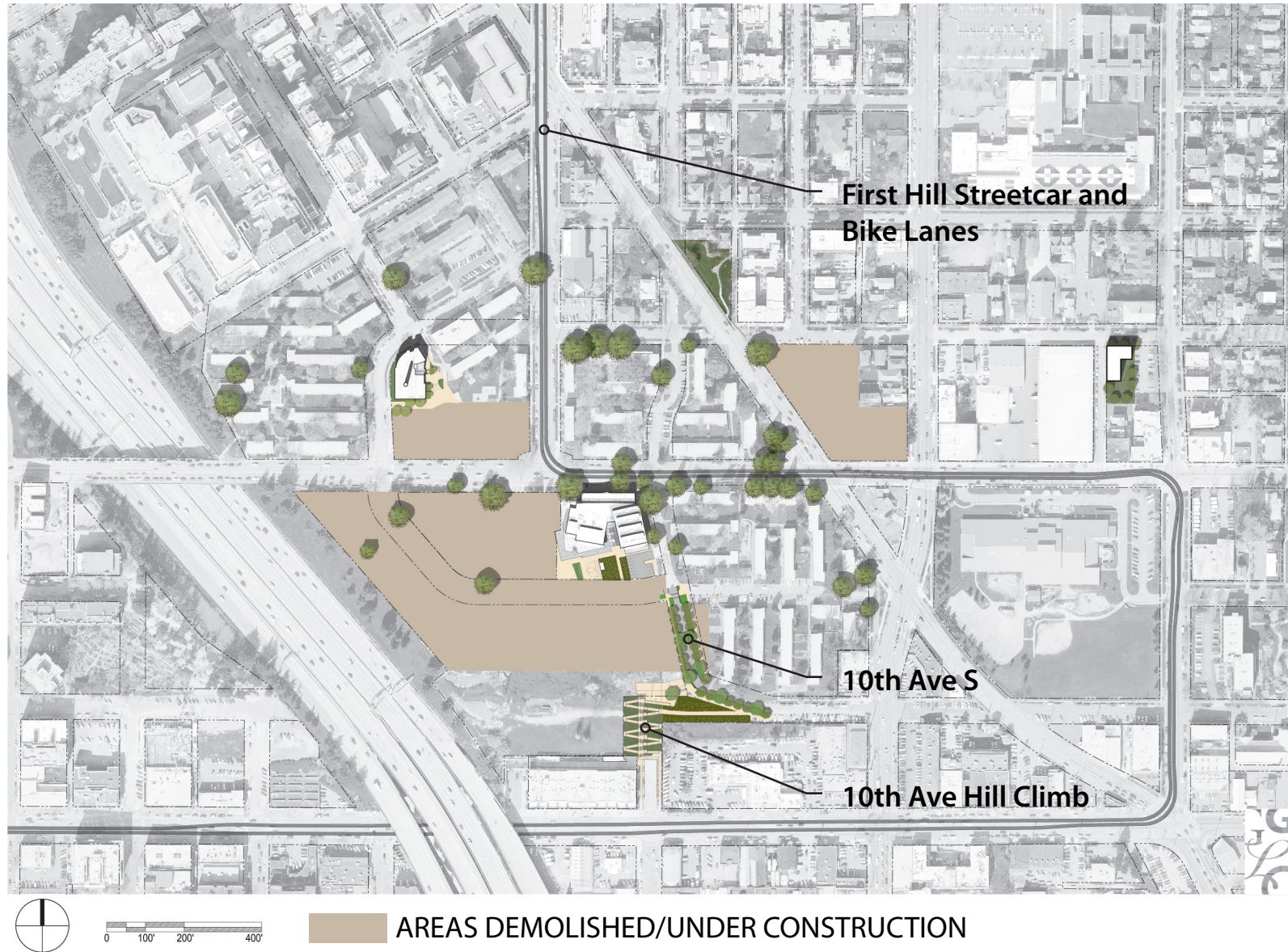


10th Avenue S Hill Climb Seattle City Council Transportation Committee

Table of Contents

<i>Yesler Terrace Master Plan Phasing</i>	2
<i>Community Outreach</i>	5
<i>Overall Landscape Plan</i>	7
<i>Vignettes</i>	8
<i>Planting</i>	11
<i>Lighting</i>	15
<i>Art Integration</i>	16

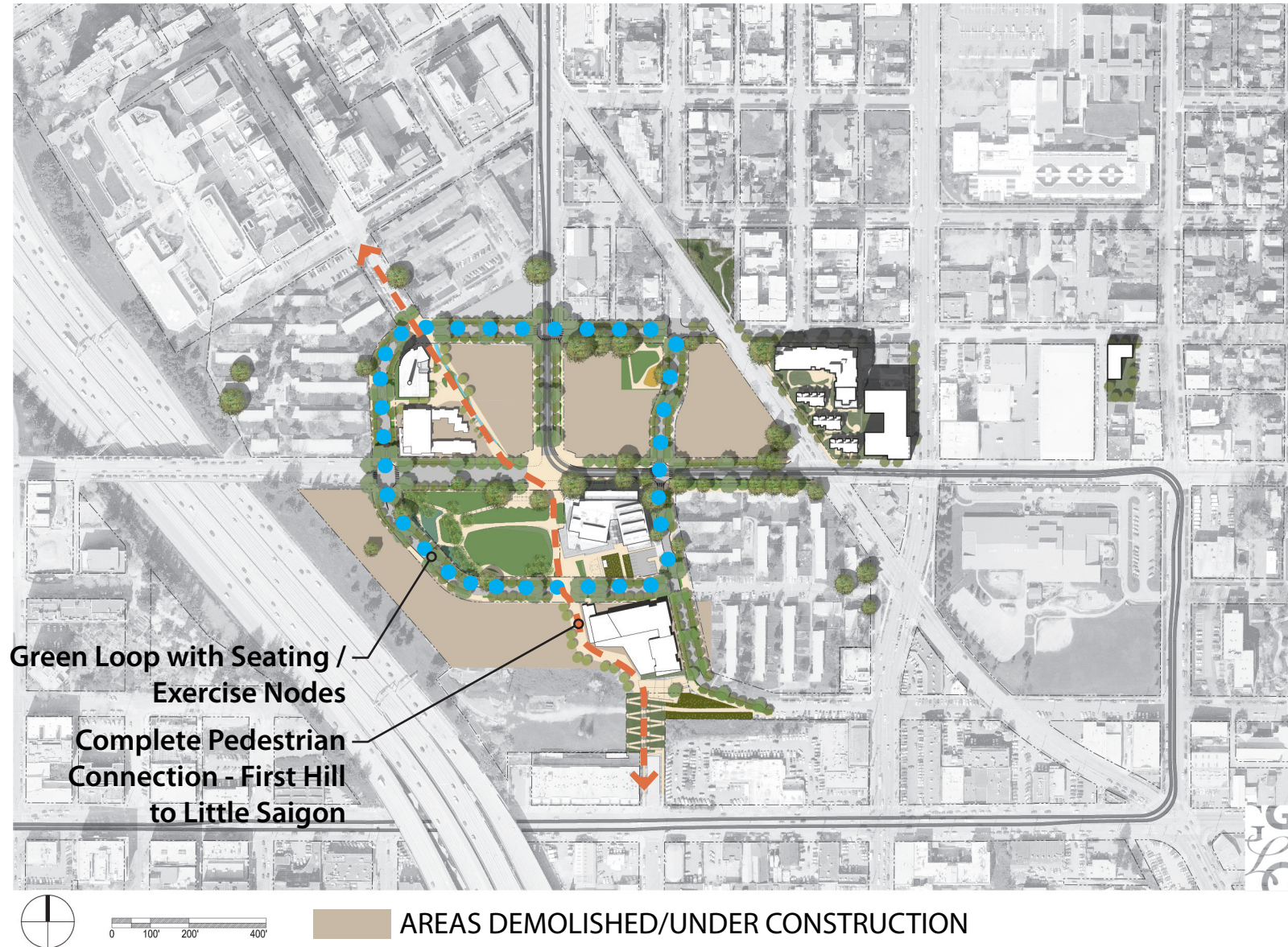
Transportation Improvements 2014-2015



Transportation Improvements 2015-2016



Transportation Improvements Completion



10th Avenue S. Hill Climb Design Charrettes - Feb18th/May 12th, 2012

Community Outreach



Preferences:

- Wheelchair accessibility
- Shelter for resting area
- Seating - but not long benches that allow sleeping
- Large plaza for group activities
- Maximize gardening/P-Patch area
- Lush planting surrounding the hardscape
- Long, straight staircases
- Deter skateboarders
- Adequate lighting levels

10th Avenue S. Hill Climb Public outreach efforts - Summer 2013

- May 11th, 2013 **Spring Clean Event, Hing Hay Park** (30 attendees)

- Staffed information booth during registration , with interpretation



- May 11-31, 2013 **SCIDpda Idea Space** (10 attendees)

- Display boards and translated brochures on display for additional feedback

- May 29-30th, 2013 **Door-to-door business outreach** (32 attendees)

- SCIDpda staff went to each business to explain the project, handout brochures and comment cards



- June 6th , 2013 **Project Briefing, Pacific Rim Condo Ass.** (10 attendees)

- Presentation followed by Q & A and site visit with Condo Association members

- June 14th, 2013 **Juneteenth Celebration, YT Comm. Ctr.** (20 attendees)

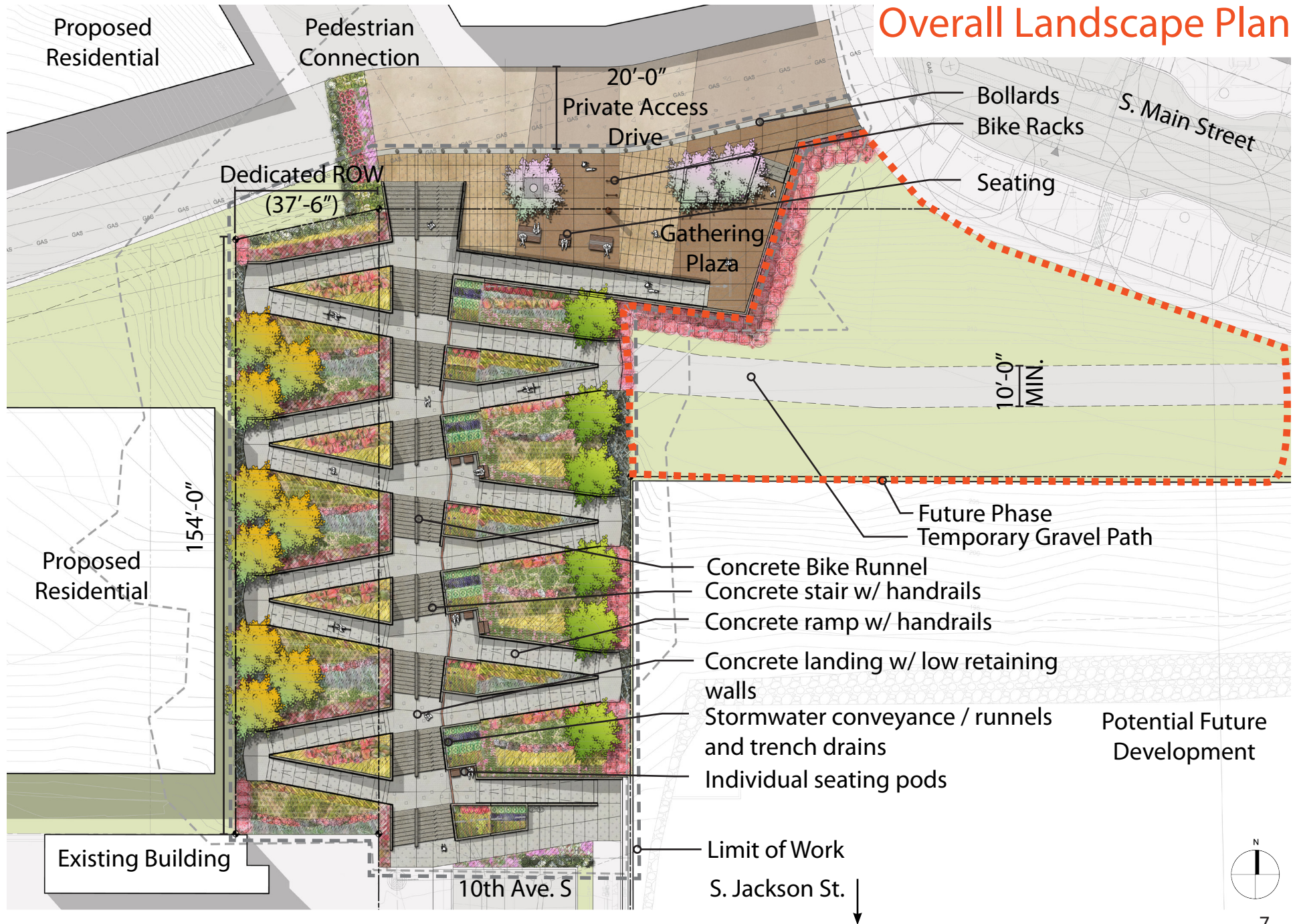
- Staffed information booth during celebration events



- July 16th , 2013 **Review with Community Police Team Officers, on-site**

- Meeting with SPD staff to review design, focus on crime and safety

Overall Landscape Plan



Looking north: 10th Ave



Gathering Plaza



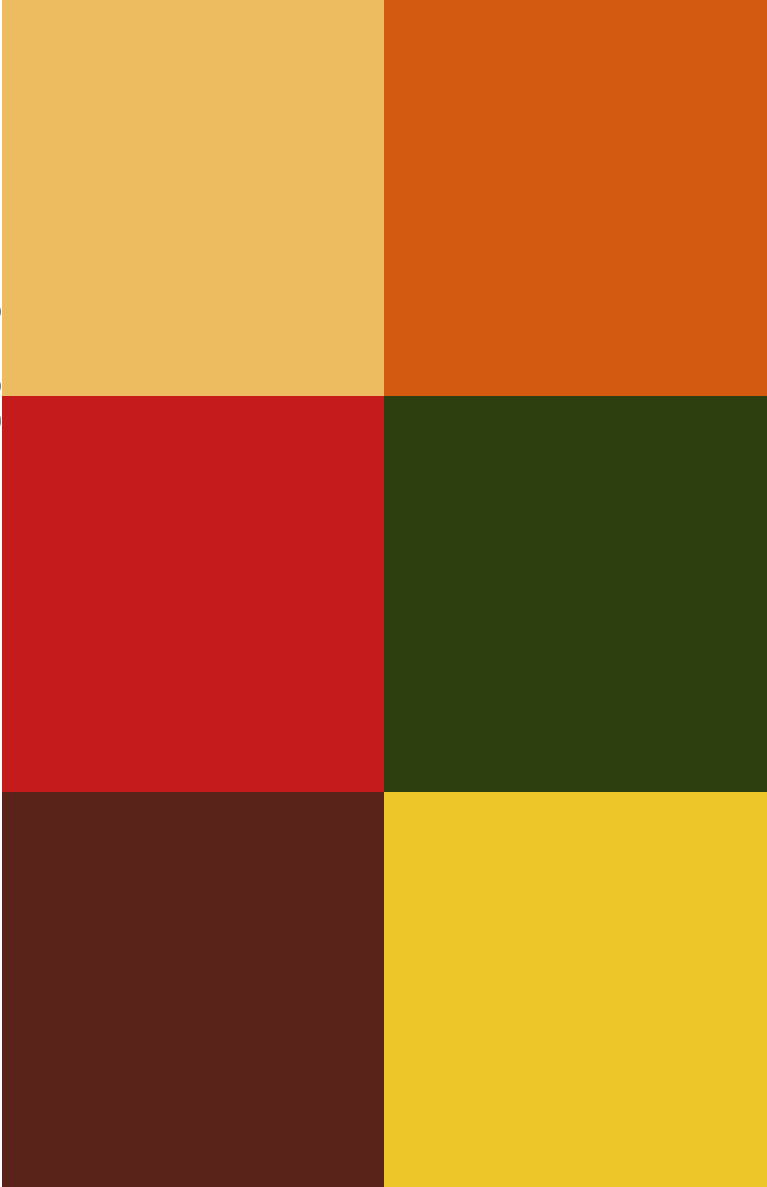
Looking south: 10th Ave



VIETNAM INFLUENCE



COLOR PALETTE



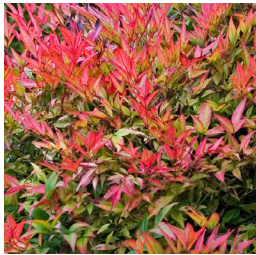
Hill Climb Planting



Japanese Snowbell



Butterfly Gaura



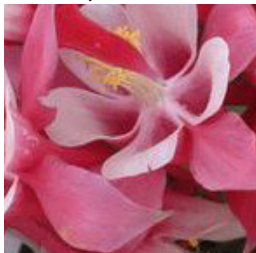
Heavenly Bamboo



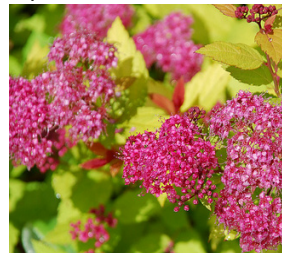
Japanese Stewartia



Evergreen Azalea



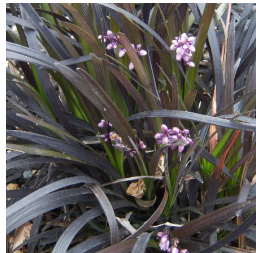
Origami Columbine



Magic Carpet Spirea



Gold Japanese Forest Grass



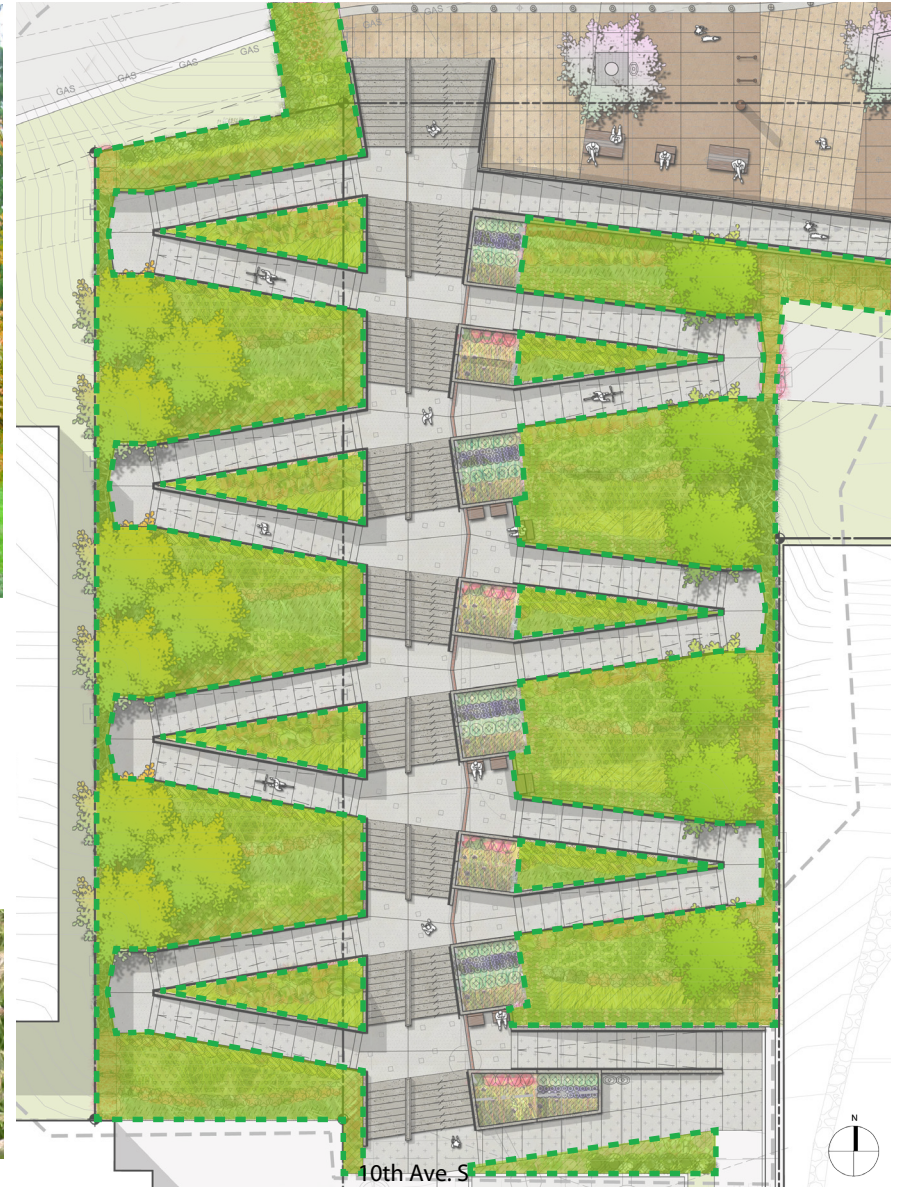
Black Mondo Grass



Black Fountain Grass



Blue Grama



Stormwater Runnel Planting



New Zealand Sedge



Japanese Horsetail



Swordleaf Rush



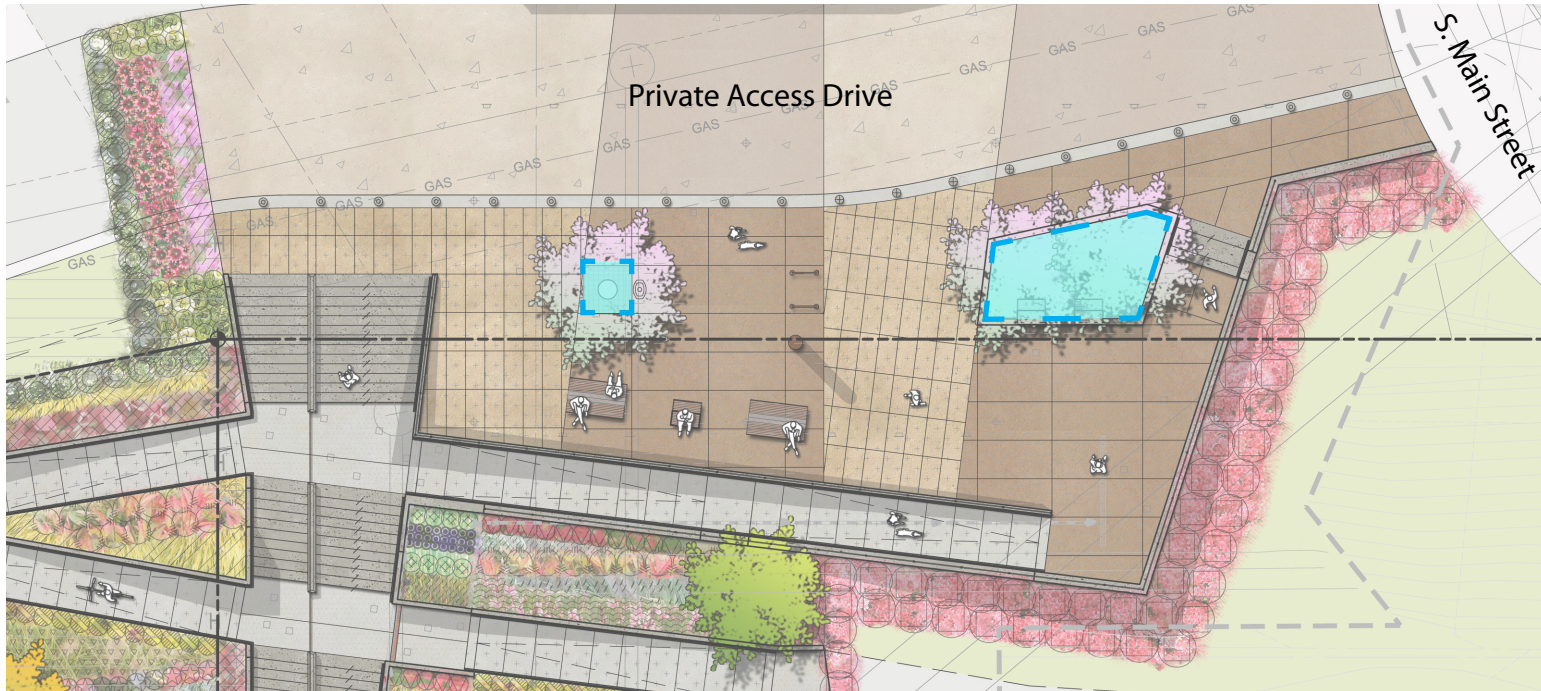
Red Velvet Yarrow



Oregon Iris



Gathering Plaza Planting



Japanese Flowering Apricot



Alpine Mint Bush



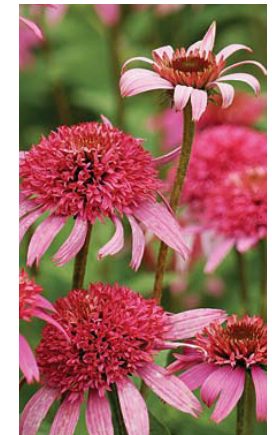
Joan Senior Daylily



Karmina Cranesbill



Penstemon



Echinacea

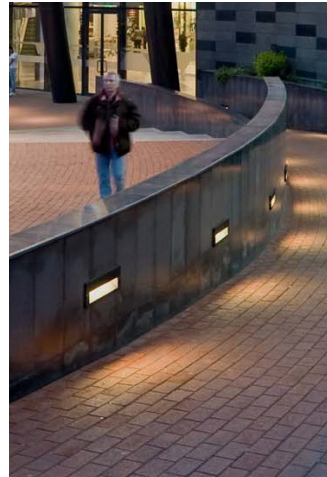
Lighting Plan



Forms + Surfaces Hill Climb Pole Light



Meteor Solar LED Paver Light

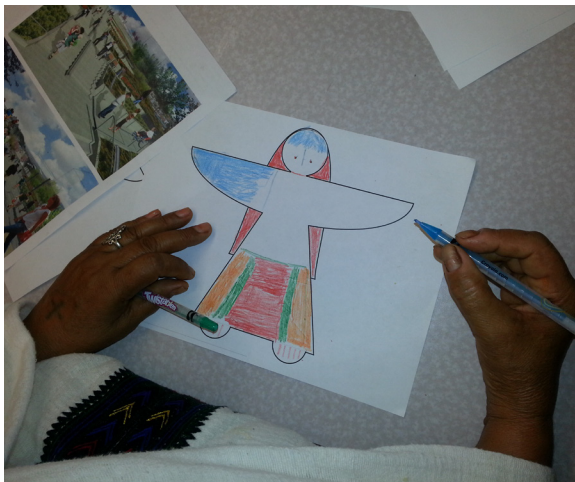


WE-EF Recessed Step Light



Art Public Process

- Nov 6th, 2013 Yesler Arts Committee (5 attendees)
- Jan 23rd, 2014 Yesler Arts Committee (9 attendees)
- Nov 19th, 2013 Yesler Terrace Community Council (50 attendees)
- Dec 4th, 2013 Yesler Terrace Citizen Review Committee - Neighborhood Sub Committee (5 attendees)
- Dec 9th, 2013 Friends of Little Saigon (12 attendees)
- Dec 9th, 2013 First Hill Improvement Association (25 attendees)
- Jan 14th, 2014 Consultation with City of Seattle Office of Arts and Culture
- Jan 23rd, 2014 After-School Art Program w/ Youth (15 attendees)



Art Plan and Preliminary Mock-ups

